

Supporting Information for “Recent multi-decadal Southern Ocean surface cooling unlikely caused by Southern Annular Mode trends”

Yue Dong^{1,2}, Lorenzo M. Polvani^{1,3}, David B. Bonan⁴

¹Lamont-Doherty Earth Observatory, Columbia University, Palisades, NY, USA

²Cooperative Programs for the Advancement of Earth System Science, University Corporation for Atmospheric Research, Boulder,
CO, USA

³Department of Applied Physics and Applied Mathematics, Columbia University, New York, NY, USA

⁴Environmental Science and Engineering, California Institute of Technology, Pasadena, CA, USA

Contents of this file

1. Table S1
2. Figures S1 - S5

Corresponding author: Yue Dong, yd2644@columbia.edu

August 29, 2023, 2:16am

Table S1. Model large-ensemble simulations used in this study

model	simulation	ensemble number
CanESM2	Historical, rcp8.5	50
CESM1	Historical, rcp8.5	40
GFDL-CM3	Historical, rcp8.5	20
GFDL-ESM2M	Historical, rcp8.5	30
MPI-ESM	Historical, rcp8.5	100
CanESM5	Historical, ssp245	25
GISS-E2-1-G	Historical, ssp370	10
IPSL-CM6A-LR	Historical, ssp370	10
MIROC6	Historical, ssp245	50
MIROC-ES2L	Historical, ssp245	30

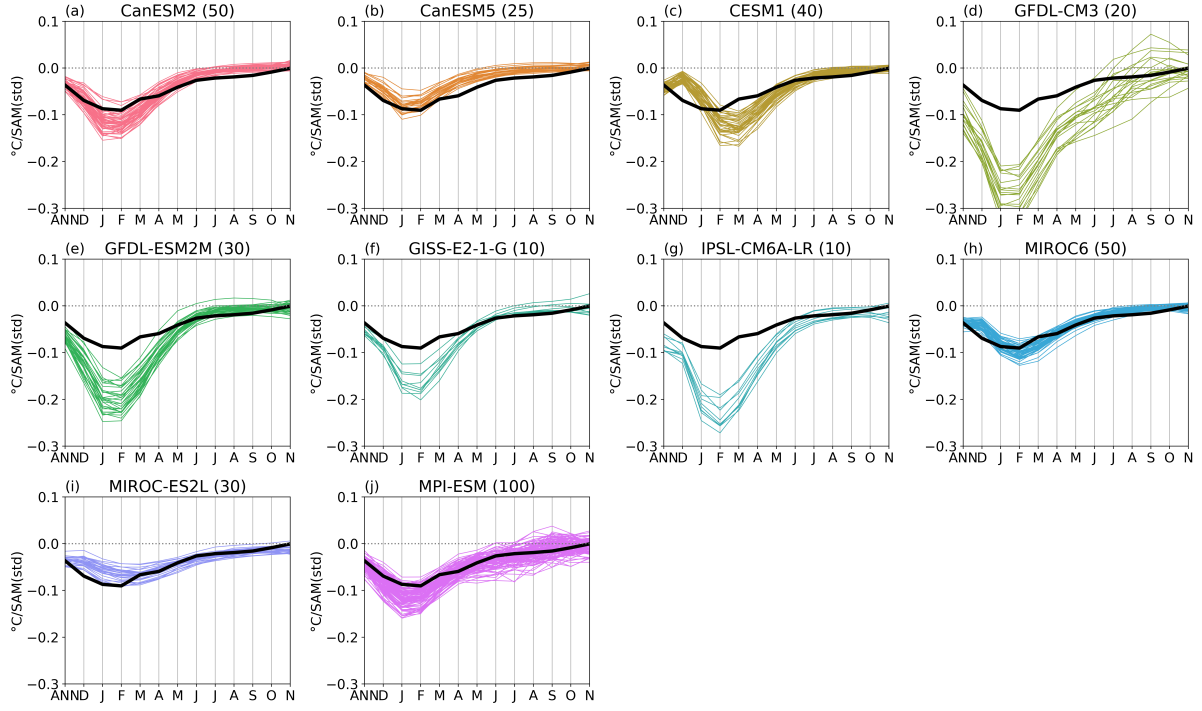


Figure S1. (a) Coefficients of monthly SST regressions onto DJF SAM for each individual model large-ensemble. Numbers in the title for each panel denotes the total number of ensemble members of the model.

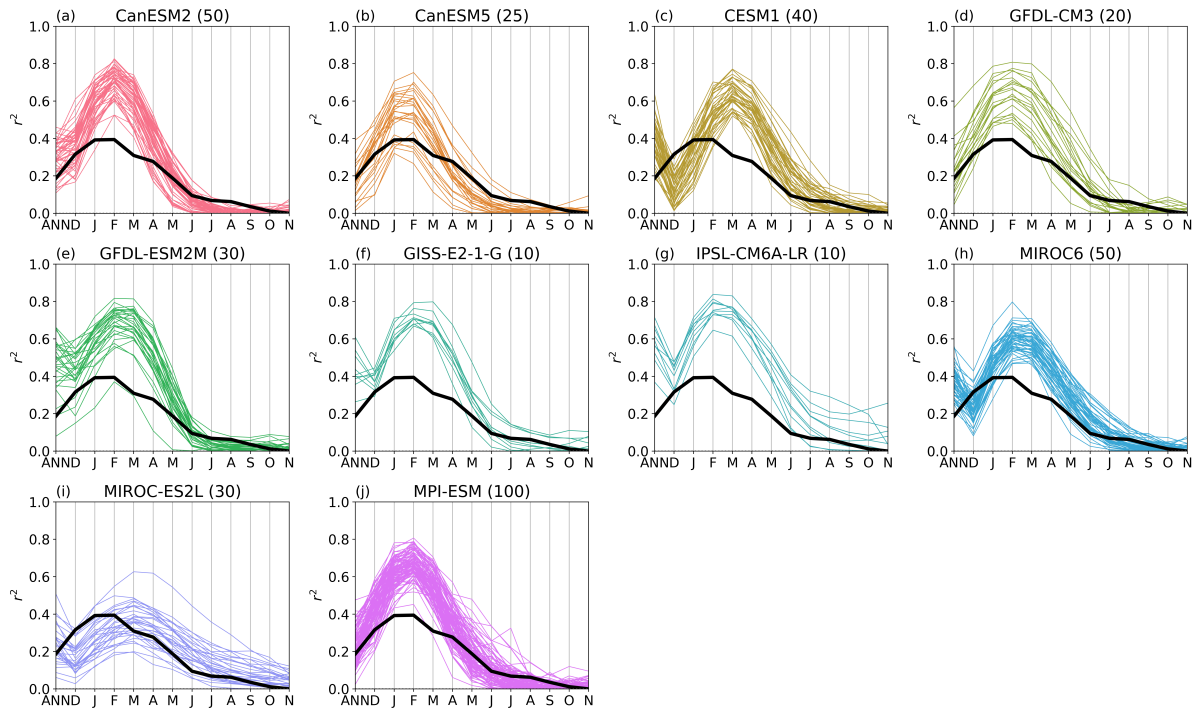


Figure S2. Same as Fig. S1, except for regression r^2 .

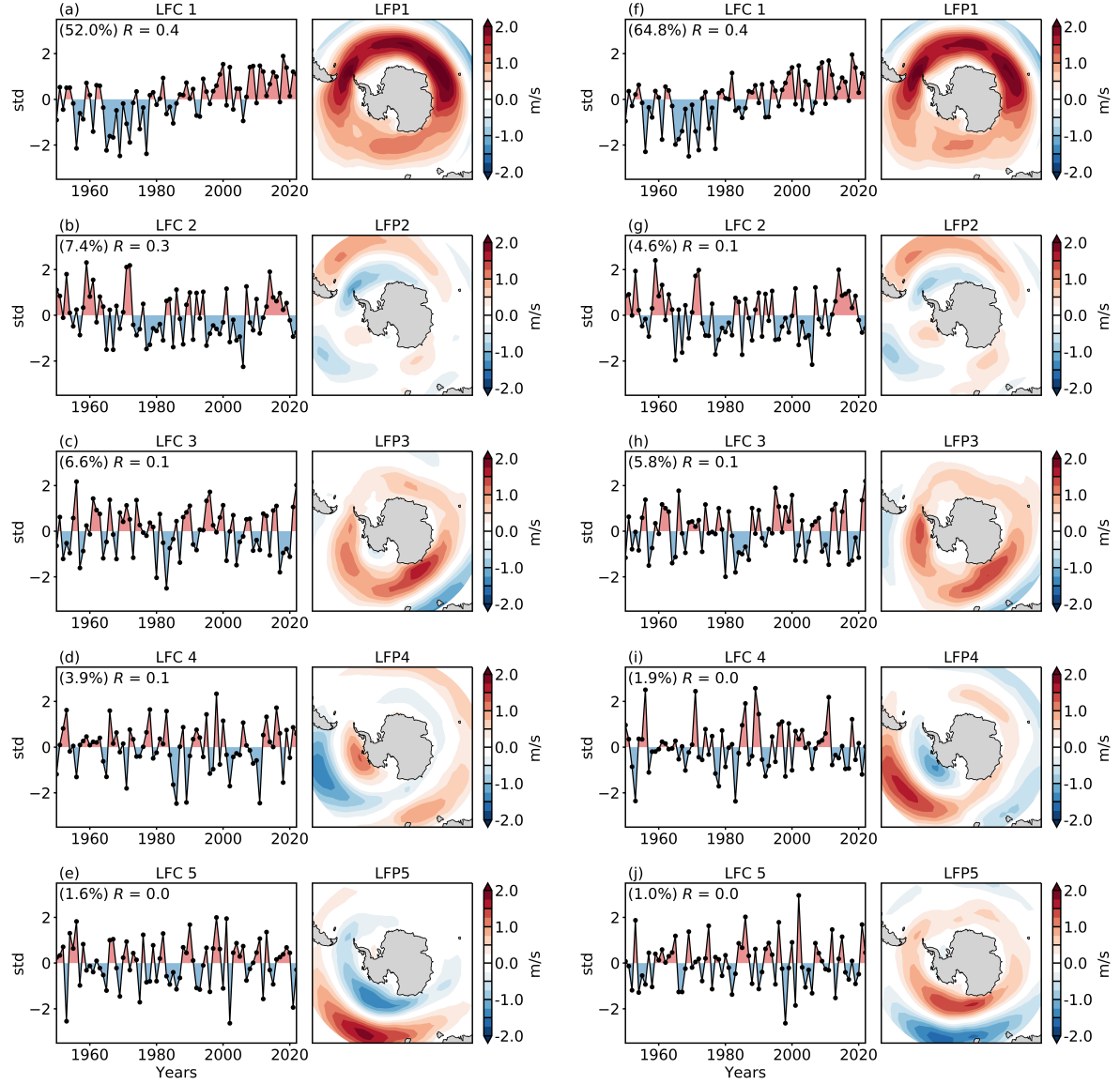


Figure S3. LFP and LFC results obtained using a cutoff of 10-year (left, a-e) or 20 year (right, f-j)

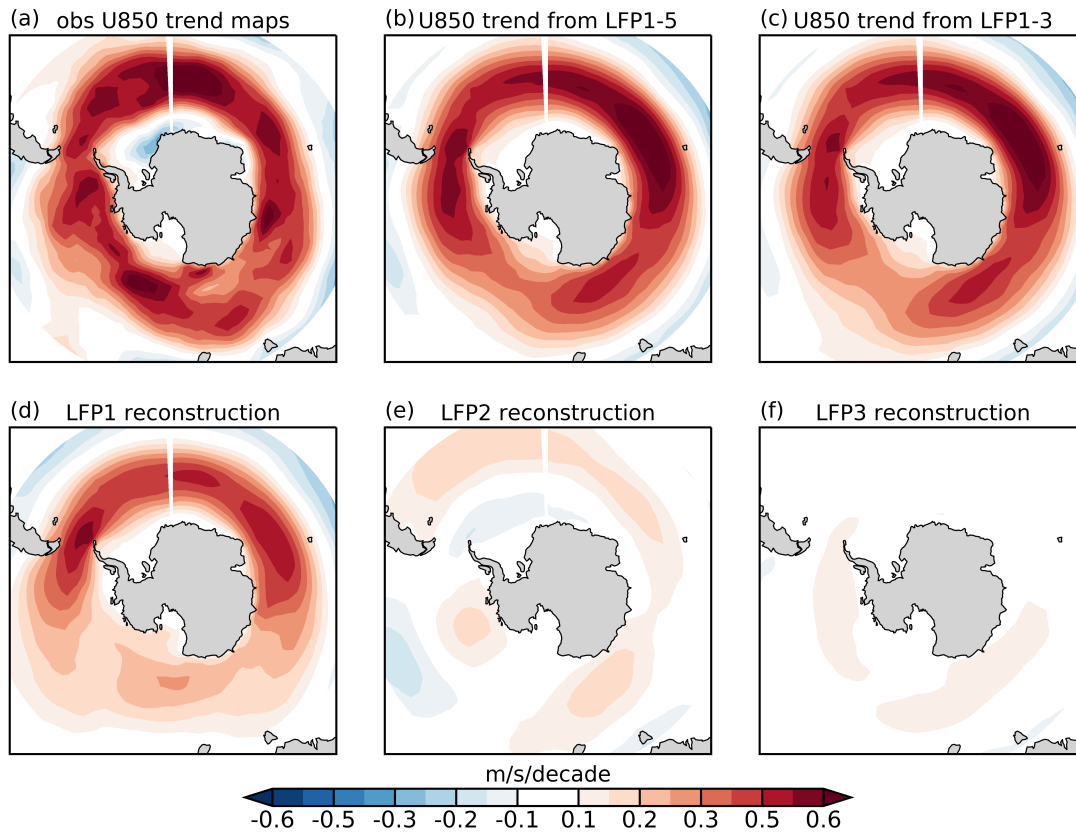


Figure S4. DJF U850 trend patterns over 1979-2022 (m/s/decade) from (a) ERA5 Reanalysis, (b, c) the reconstruction using all five LFPs or the leading three LFPs, and (d-f) the reconstructions using LFP 1-3, respectively.

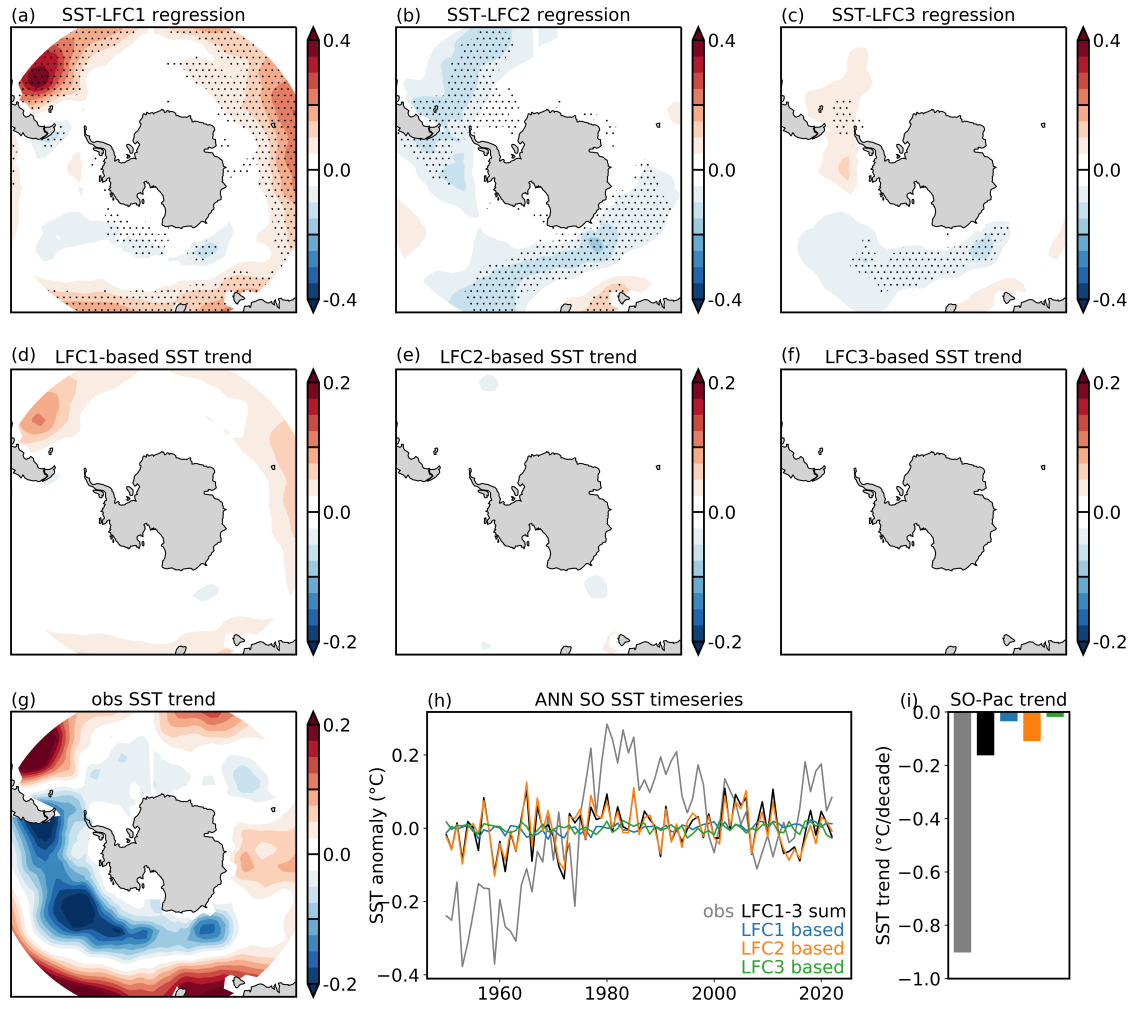


Figure S5. Same as Fig. 4, except for annual-mean SST regressions and trends.