

Long-term (2000–2020) variability of in situ time series of Carbonyl Sulfide

C. Serio^{1}, S. Montzka², G. Masiello¹, V. Carbone³*

¹Scuola di Ingegneria, Università degli studi della Basilicata, Potenza, Italy.

²NOAA Earth System Research Laboratory, Boulder, Colorado, USA

³Dipartimento di Fisica, Università della Calabria, Rende, Italy.

]

Contents of this file

Figures S1 to S14

Introduction

The supplemental material compares the OCS monthly times series (flask measurements), the *lowess* trend, and the EMD trend for the 14 stations examined in the present work. The list of the 14 stations and related acronyms can be found in Tab. 1 of the paper.

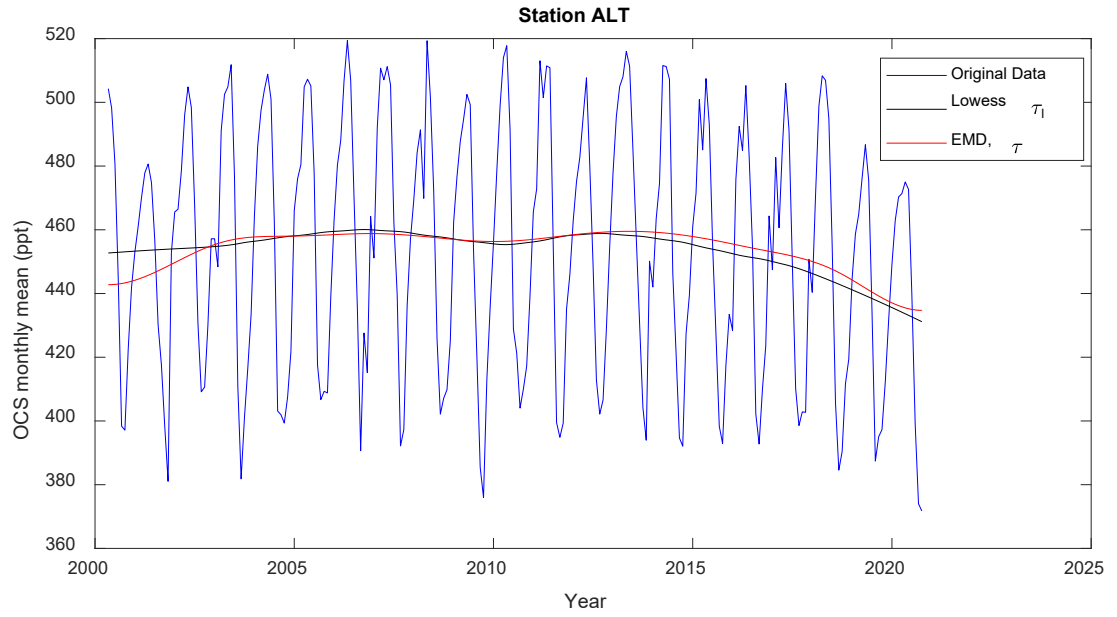


Figure S1.: ALT station: Original OCS time series, *lowess* trend, τ_l and EMD trend τ .

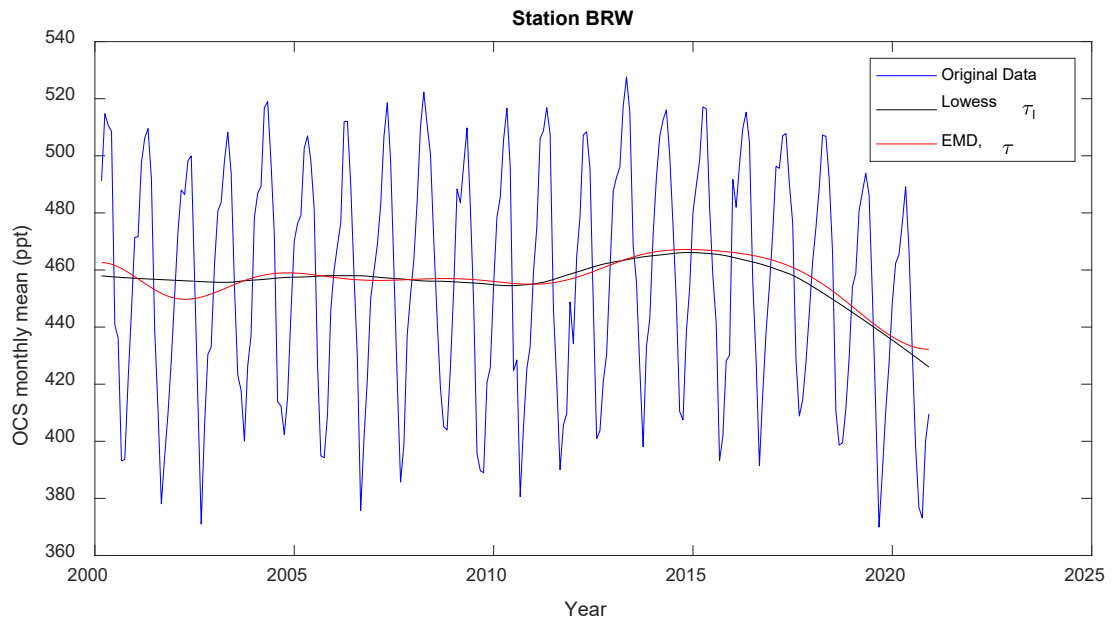


Figure S2: BRW station: Original OCS time series, *lowess* trend, τ_l and EMD trend τ .

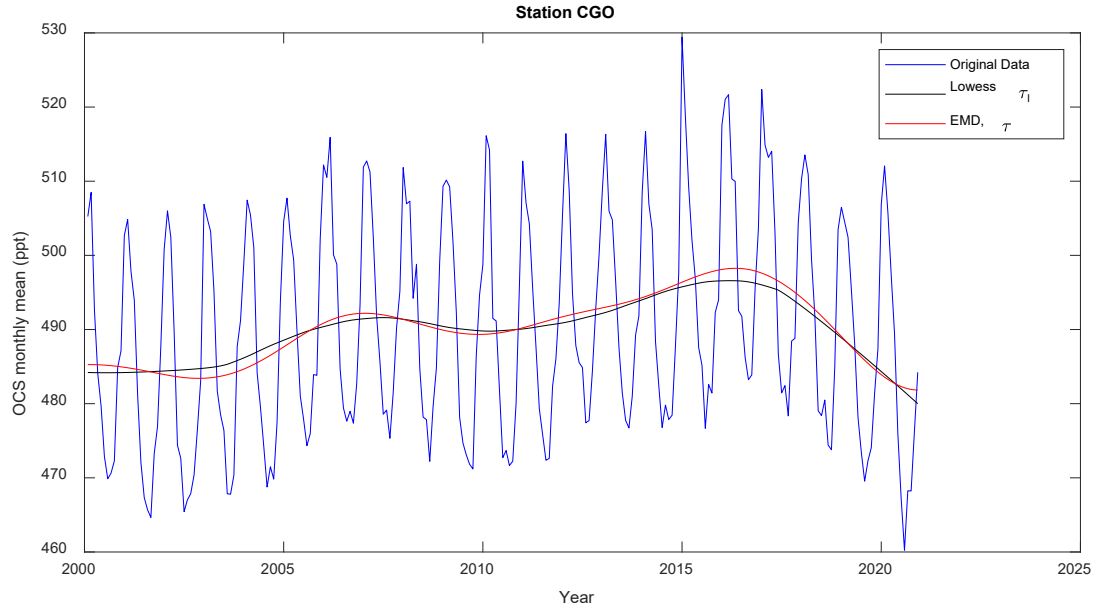


Figure S3: CGO station: Original OCS time series, *lowess* trend, τ_l and EMD trend τ .

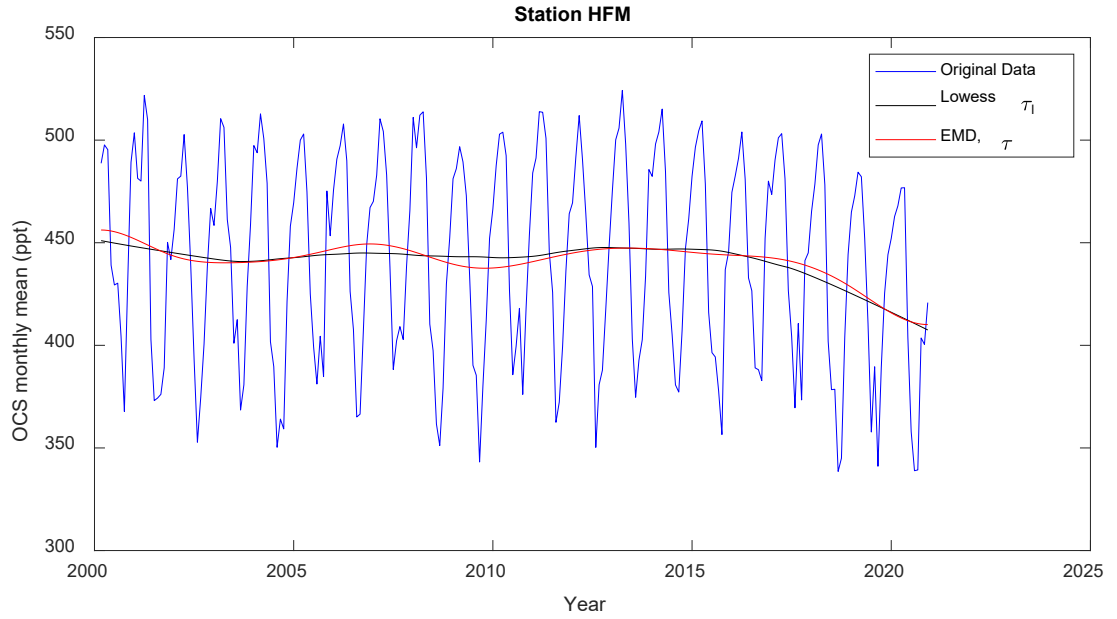


Figure S4: HFM station: Original OCS time series, *lowess* trend, τ_l and EMD trend τ .

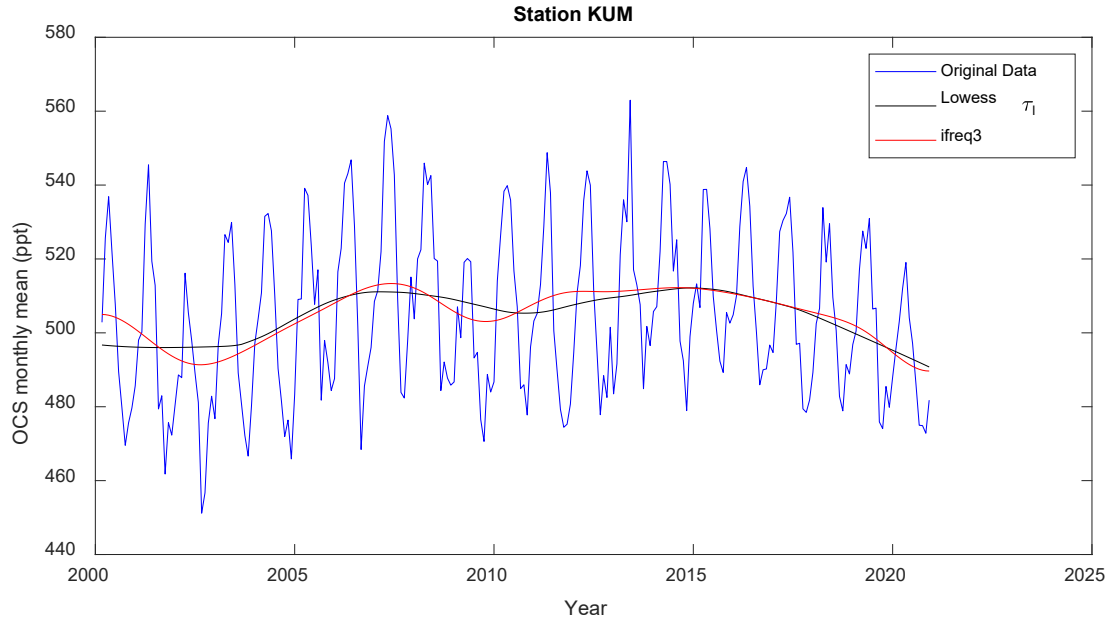


Figure S5: KUM station: Original OCS time series, *lowess* trend, τ_l and EMD trend τ .

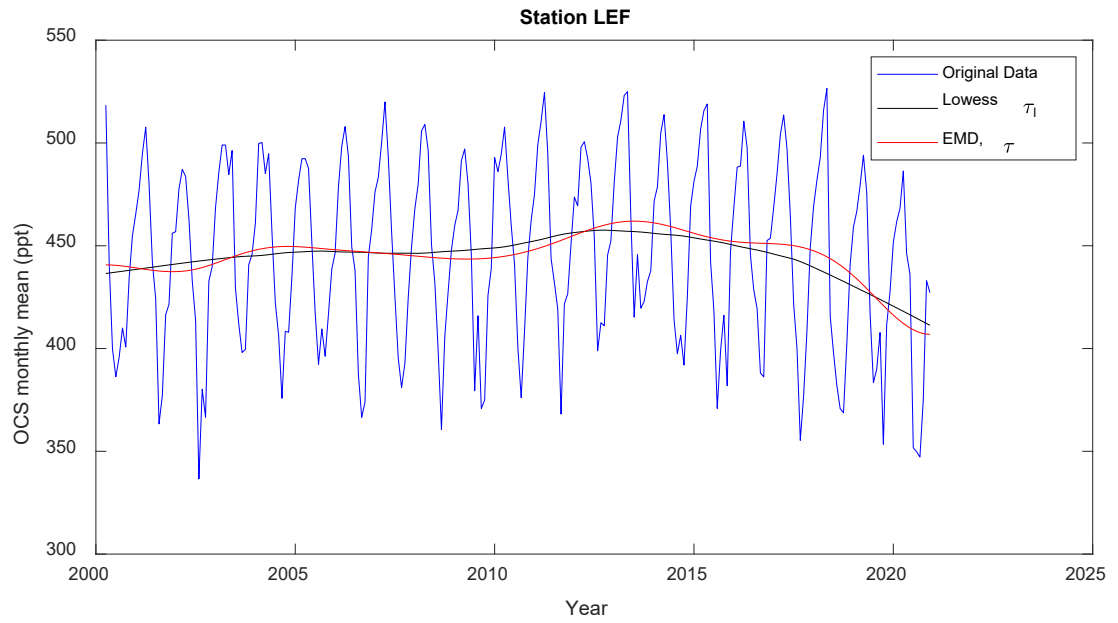


Figure S6: LEF station: Original OCS time series, *lowess* trend, τ_l and EMD trend τ .

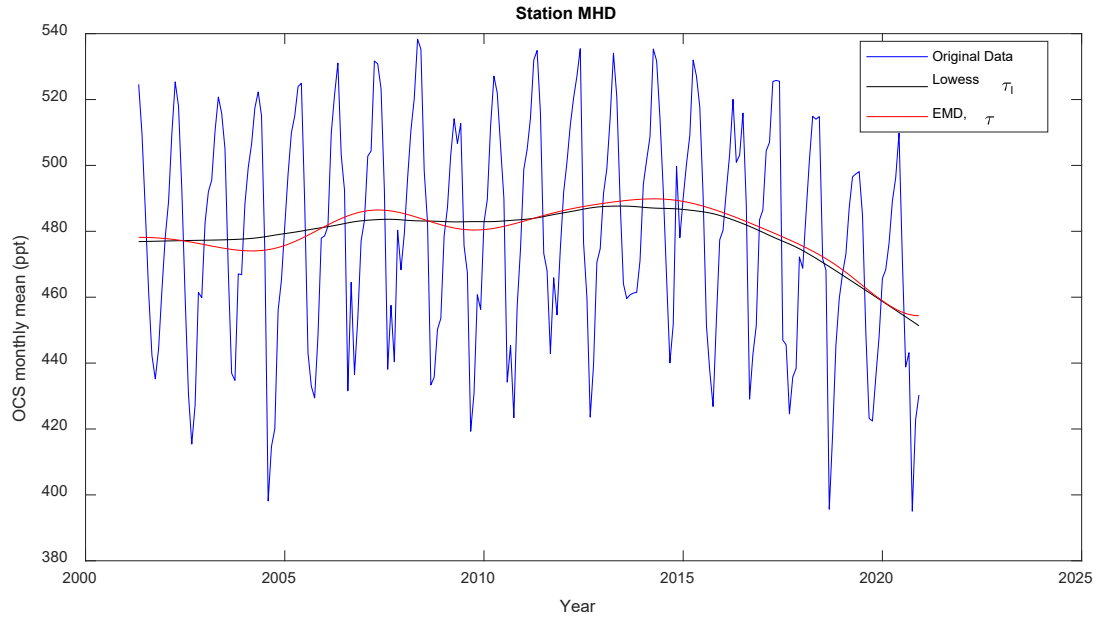


Figure S7: MHD station: Original OCS time series, *lowess* trend, τ_l and EMD trend τ .

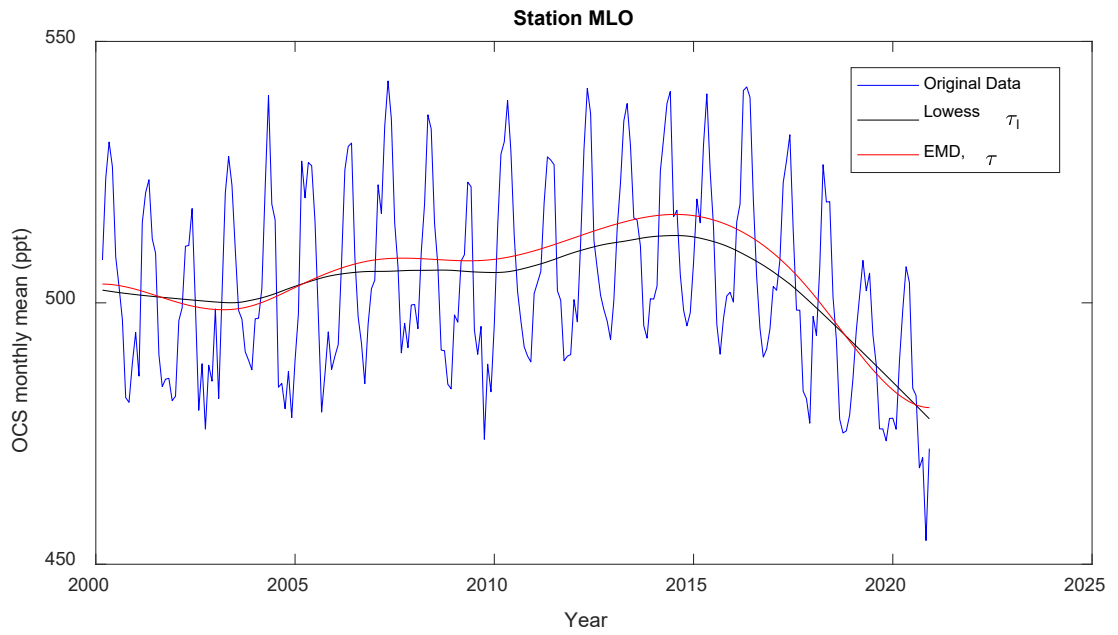


Figure S8: MLO station: Original OCS time series, *lowess* trend, τ_l and EMD trend τ .

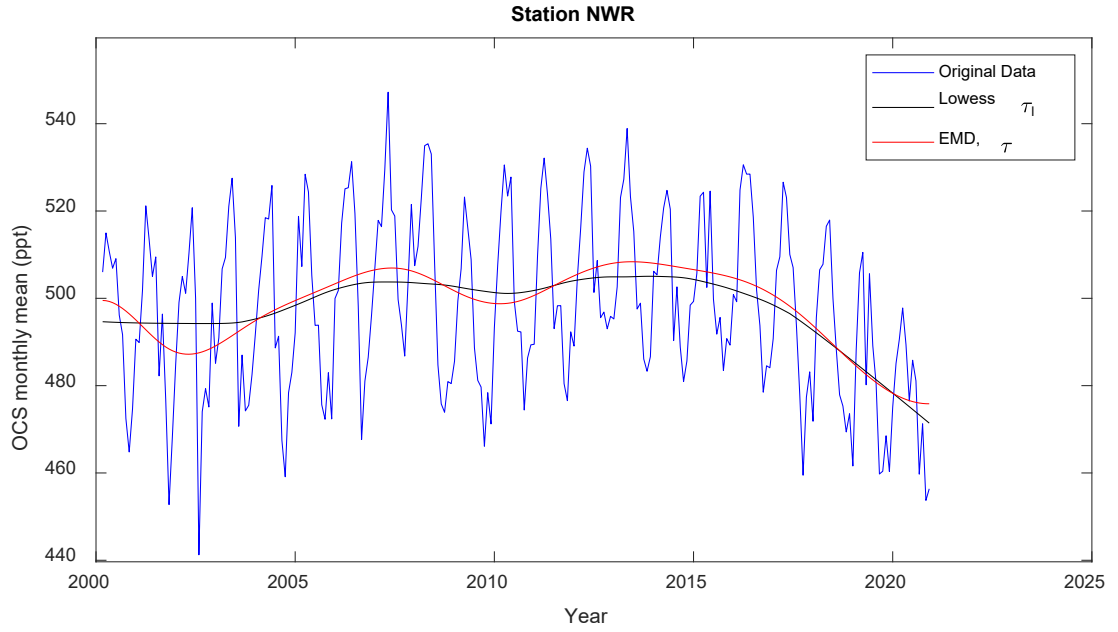


Figure S9: NWR station: Original OCS time series, *lowess* trend, τ_l and EMD trend τ .

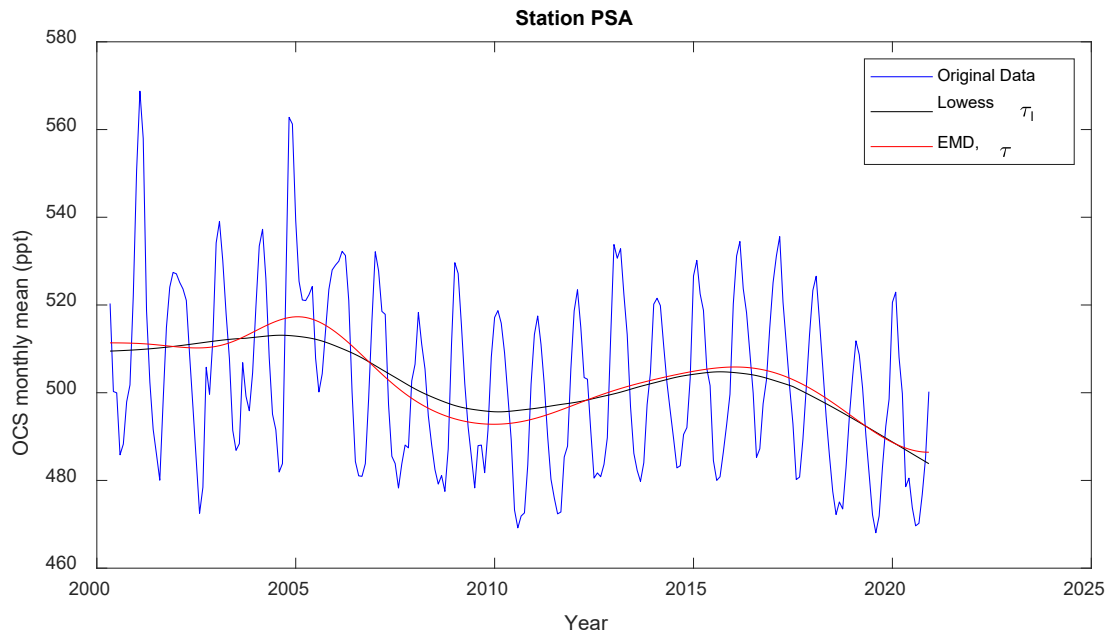


Figure S10: PSA station: Original OCS time series, *lowess* trend, τ_l and EMD trend τ .

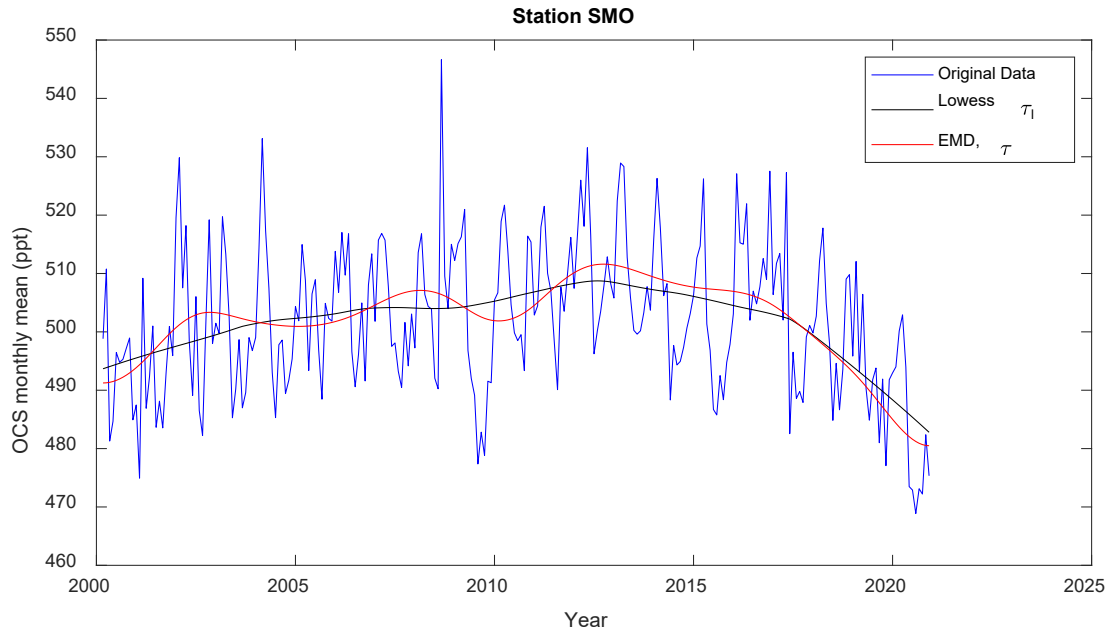


Figure S11: SMO station: Original OCS time series, *lowess* trend, τ_l and EMD trend τ .

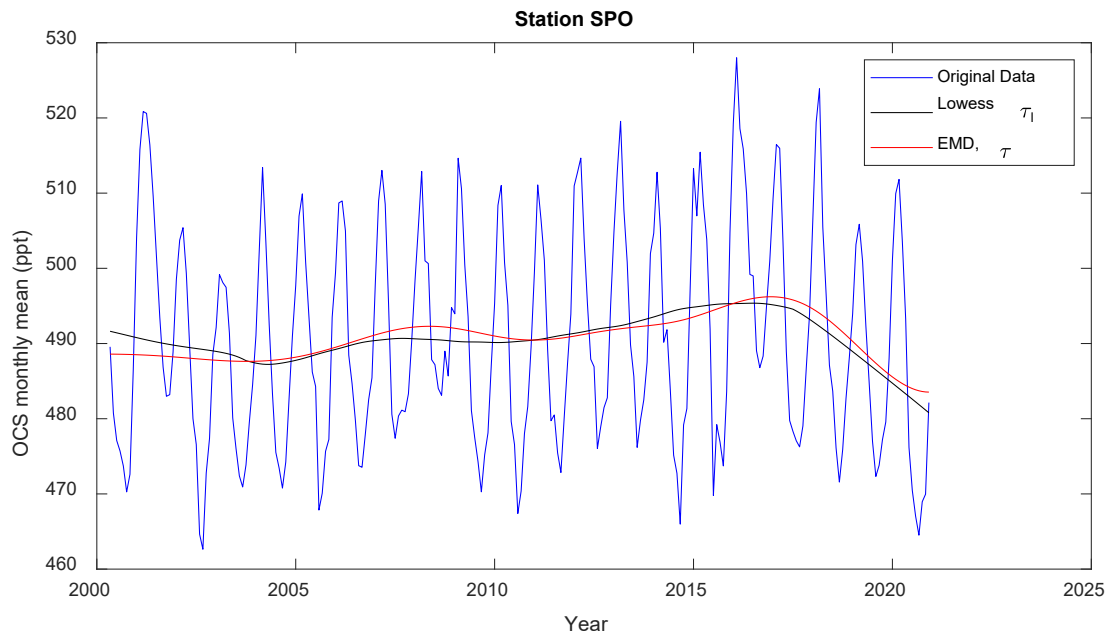


Figure S12: SPO station: Original OCS time series, *lowess* trend, τ_l and EMD trend τ .

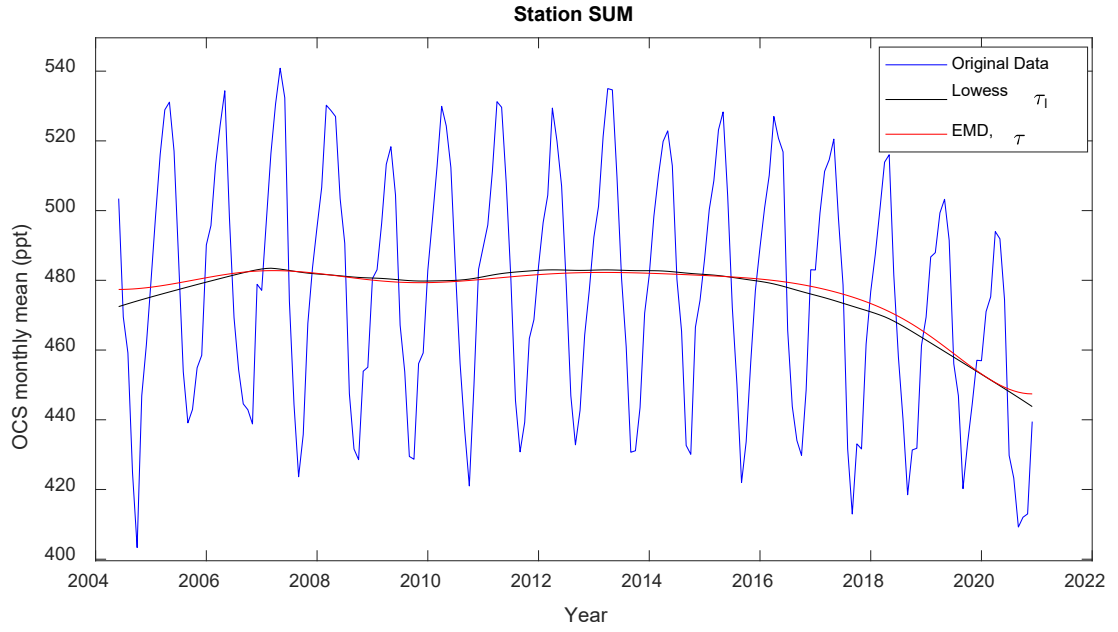


Figure 13: SUM station: Original OCS time series, *lowess* trend, τ_l and EMD trend τ .

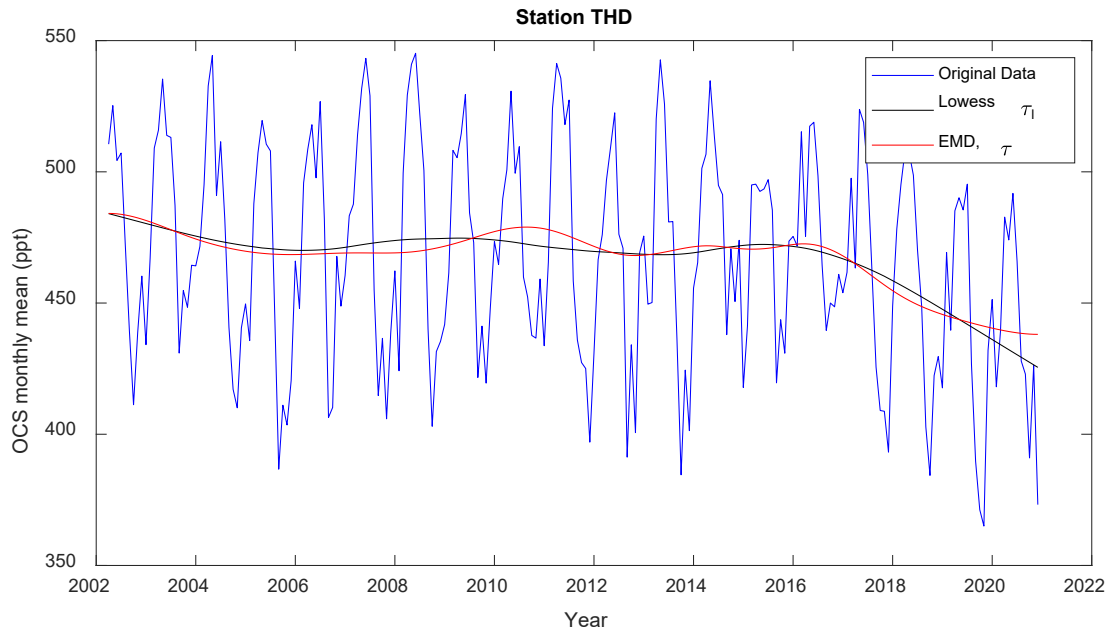


Figure S14: THD station: Original OCS time series, *lowess* trend, τ_l and EMD trend τ .