

[Evaluation of gridded precipitation datasets over international basins and large lakes]

[Yi Hong¹, Eric J. Anderson², Lauren Fry², Hong Xuan Do^{3,4}, James Kessler², Laura Read⁵, Arezoo Rafieei Nasab⁵, Andrew D. Gronewold³, Lacey Mason²]

¹ Cooperative Institute for Great Lakes Research, University of Michigan, Ann Arbor, MI, USA

² Great Lakes Environmental Research Laboratory, Ann Arbor, MI, USA

³ School for Environment and Sustainability, University of Michigan, Ann Arbor, MI, USA

⁴ Faculty of Environment and Natural Resources, Nong Lam University, Ho Chi Minh City, Vietnam

⁵ National Center for Atmospheric Research, Boulder, CO, USA]

Contents of this file

Figures S1 to S8

Introduction

In addition to Fig. 3, Fig. S1-2 represent maps of MAE and R^2 for different gridded products.

Fig. S3-5 illustrate annual accumulated precipitation for overland and overlake areas of Superior, Erie and Ontario, which complement the Fig. 7 (Michigan-Huron).

Fig. S6-8 describe averaged monthly accumulated overlake-to-overland precipitation ratio (R_p) for Superior, Erie, and Ontario. Results for Michigan-Huron are presented in Fig. 8.

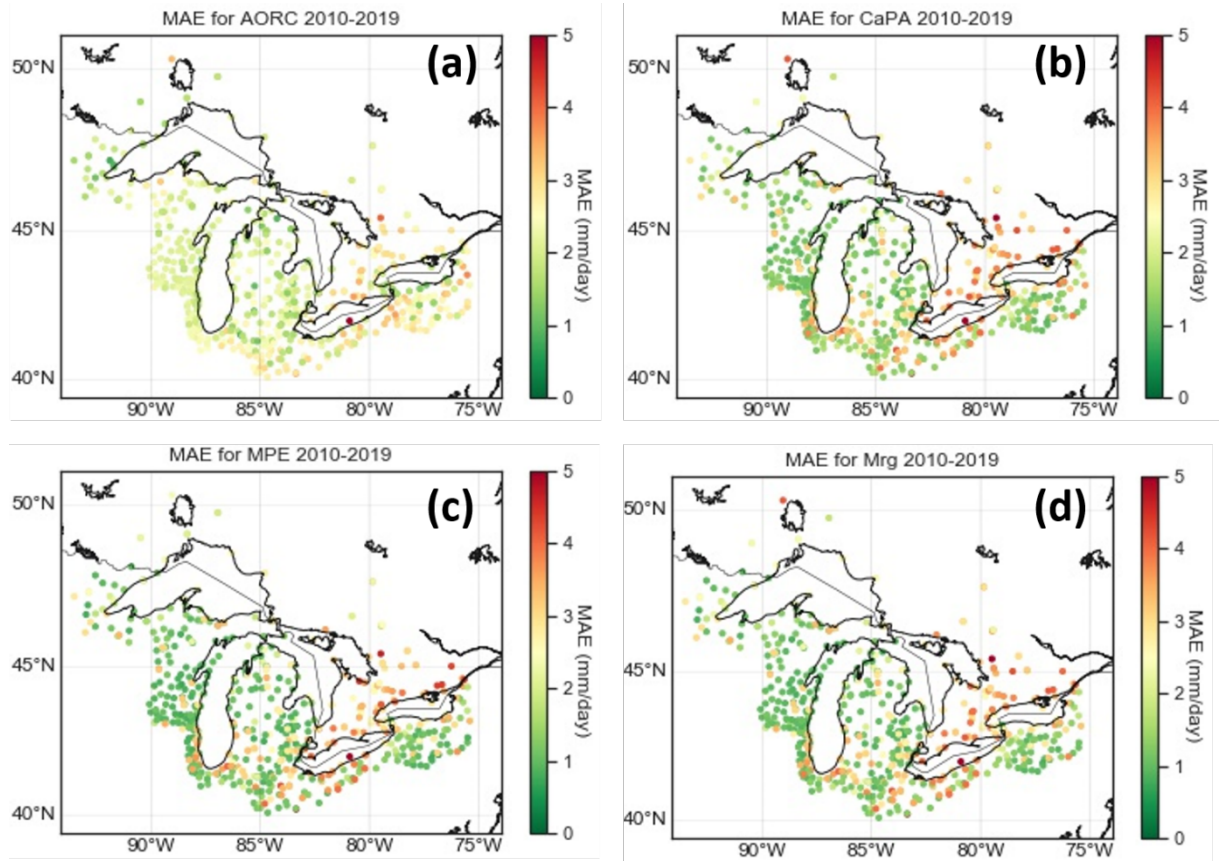


Fig. S1. Maps of MAE for AORC (a), CaPA (b), MPE (c), and Merged (d) at 632 rain gauge stations in the Great Lakes basin over 2010 – 2019.

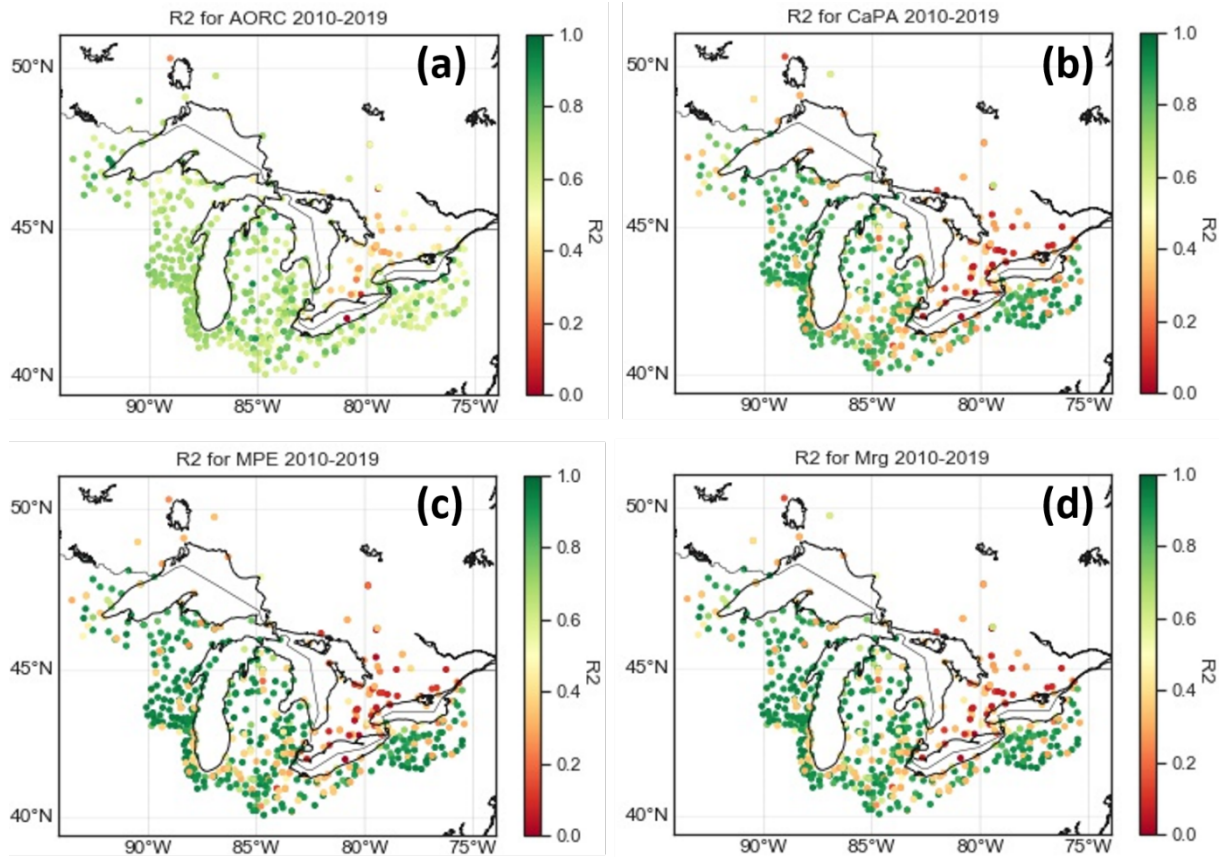


Fig. S2. Maps of R^2 for AORC (a), CaPA (b), MPE (c), and Merged (d) at 632 rain gauge stations in the Great Lakes basin over 2010 – 2019.

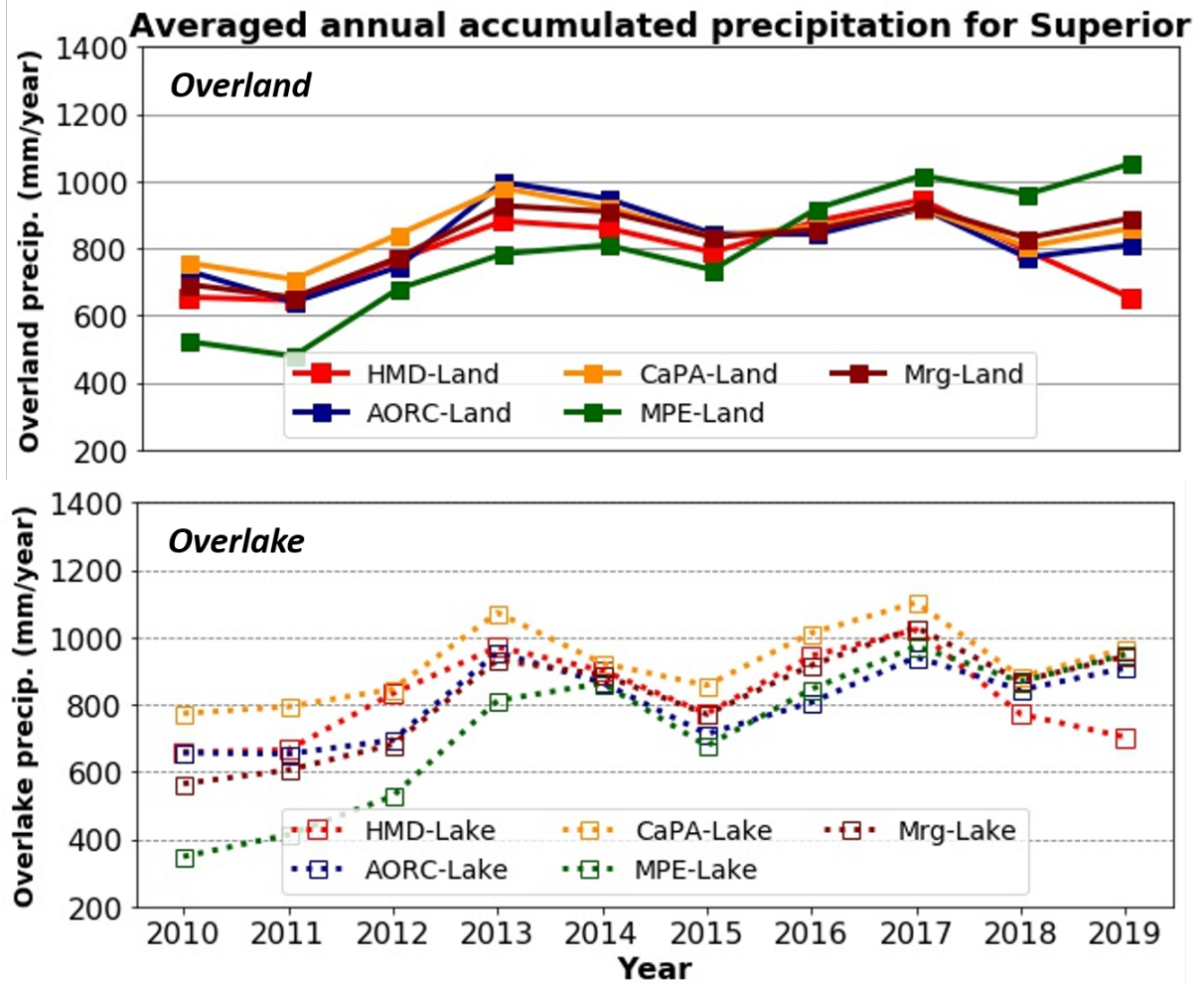


Fig. S3. Annual averaged overland/overlake precipitation for Superior sub-basin. Solid lines represent overland precipitation (upper subplot), and dashed lines indicate overlake precipitation (lower subplot).

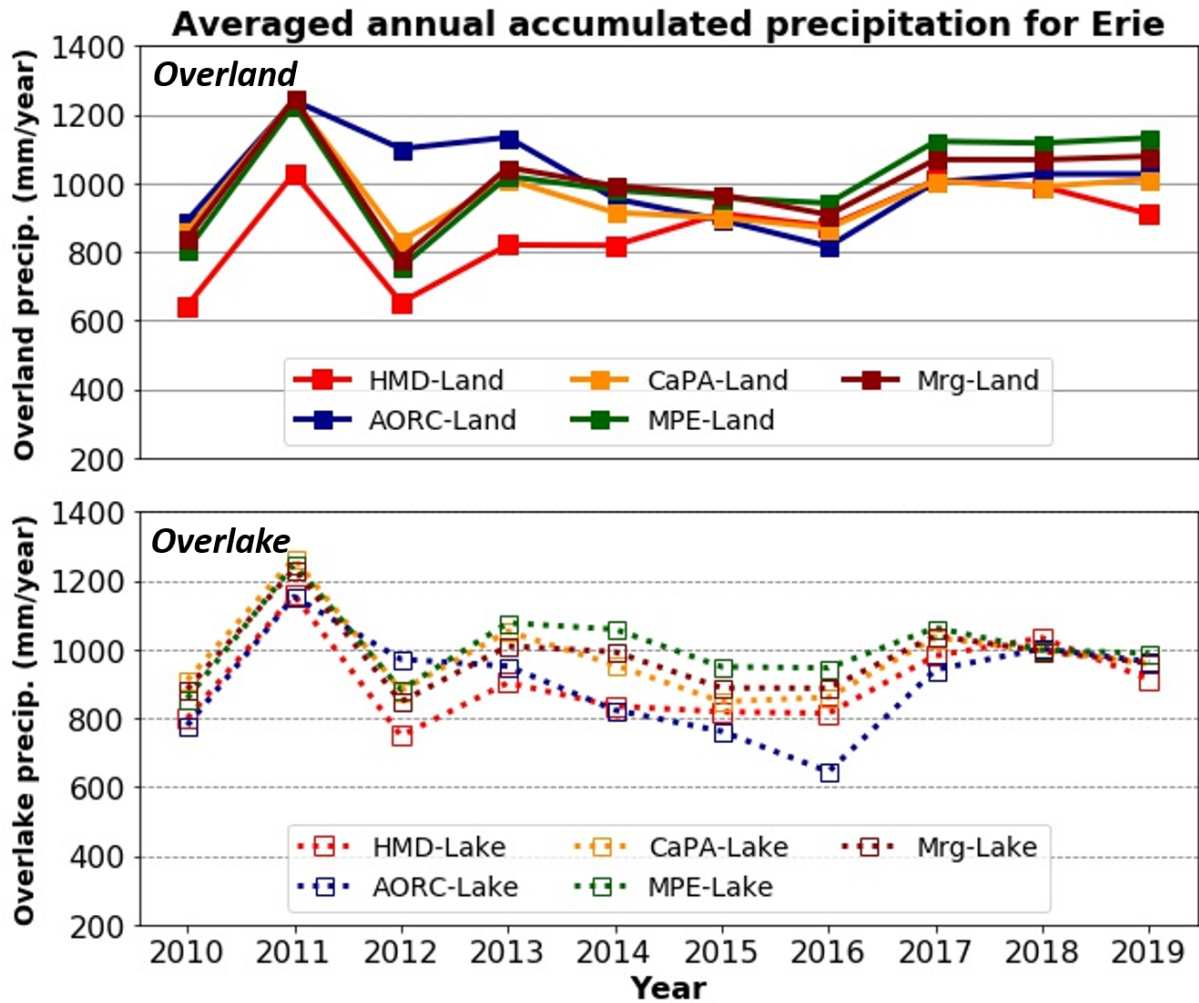


Fig. S4. Annual averaged overland/overlake precipitation for Erie sub-basin. Solid lines represent overland precipitation (upper subplot), and dashed lines indicate overlake precipitation (lower subplot).

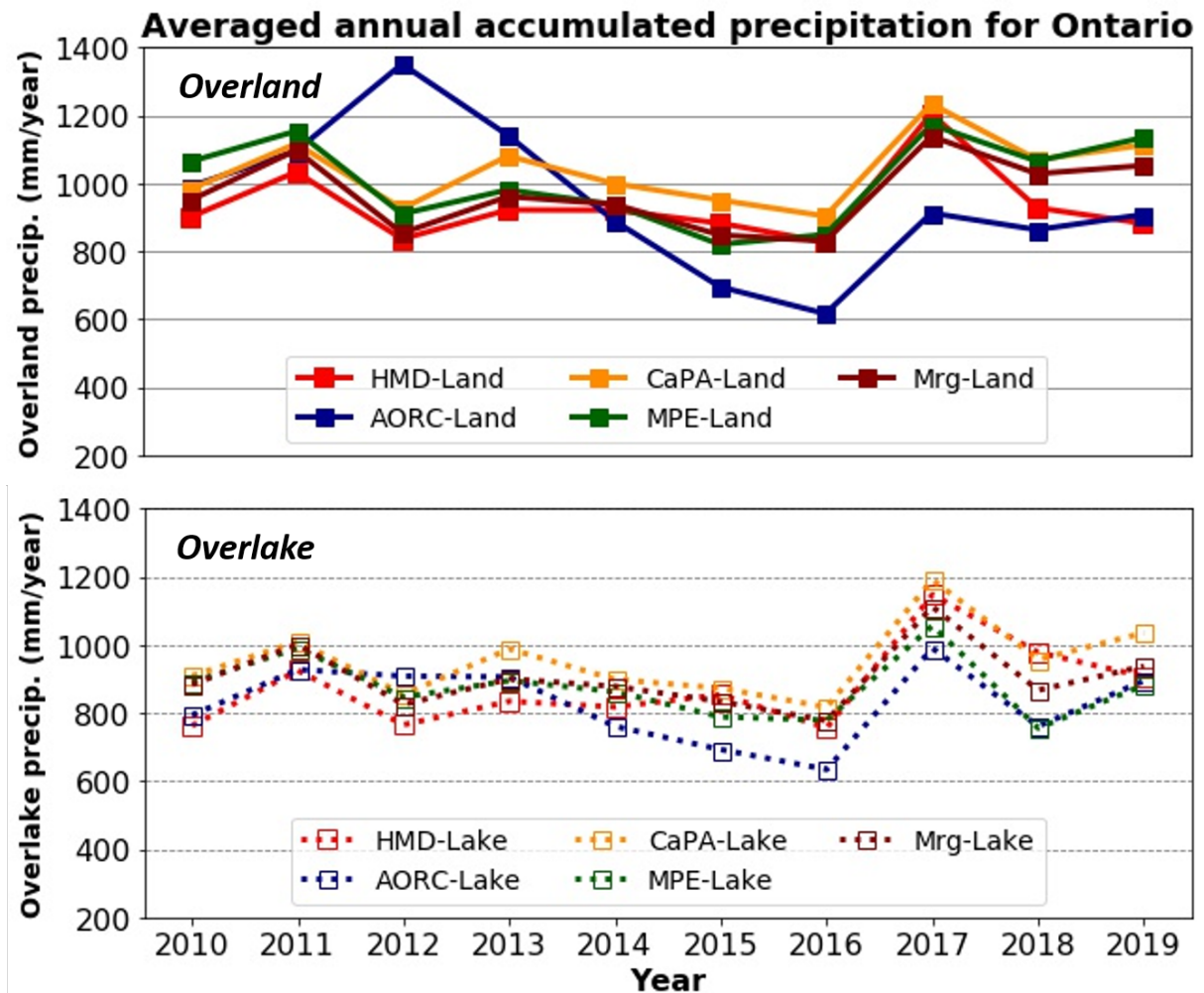


Fig. S5. Annual averaged overland/overlake precipitation for Ontario sub-basin. Solid lines represent overland precipitation (upper subplot), and dashed lines indicate overlake precipitation (lower subplot).

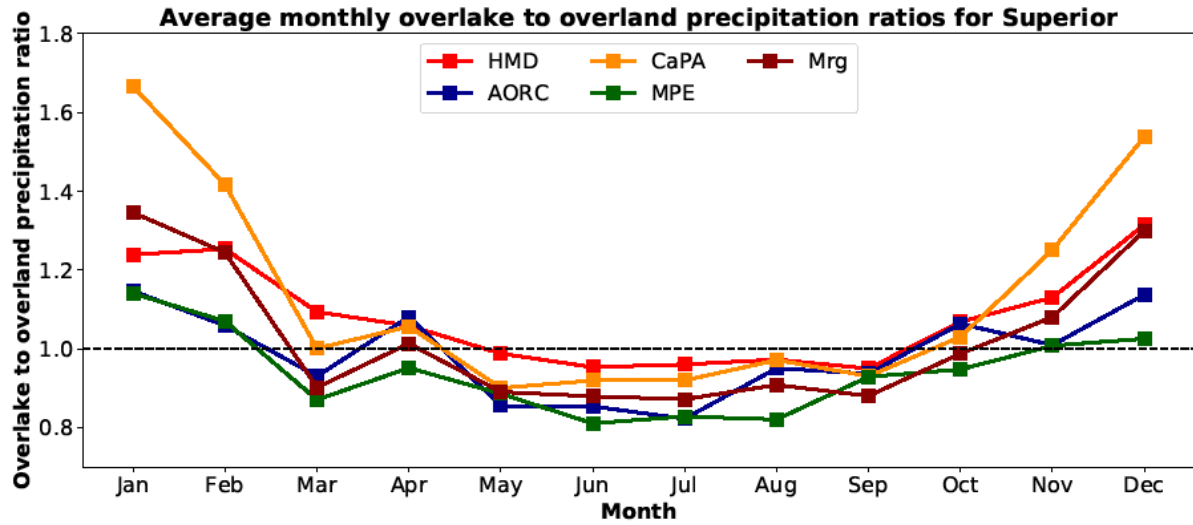


Fig. S6. Averaged monthly accumulated overland-to-overlake precipitation ratio for Superior sub-basin.

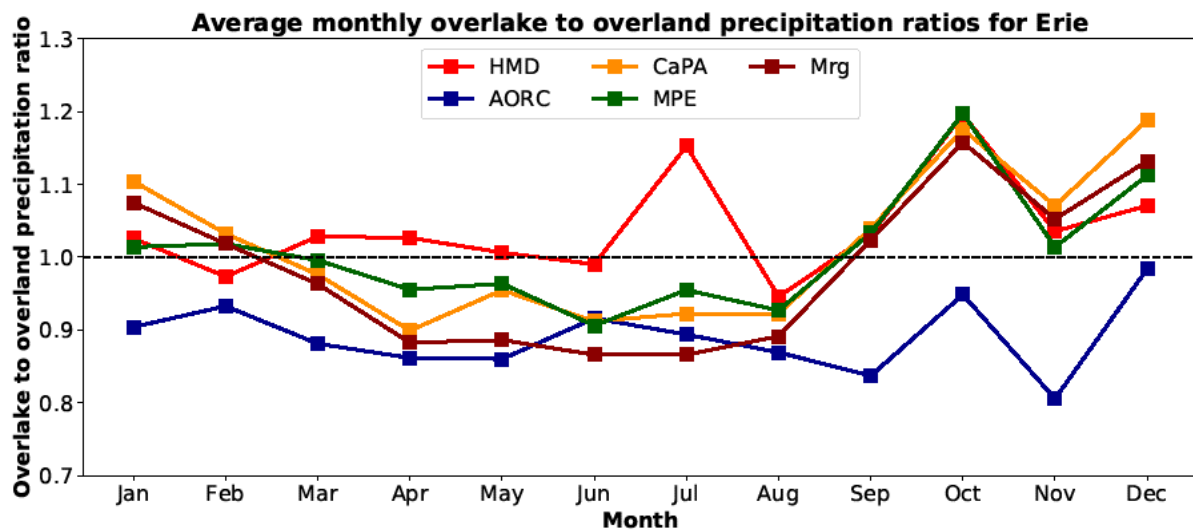


Fig. S7. Averaged monthly accumulated overland-to-overlake precipitation ratio for Lake Erie sub-basin.

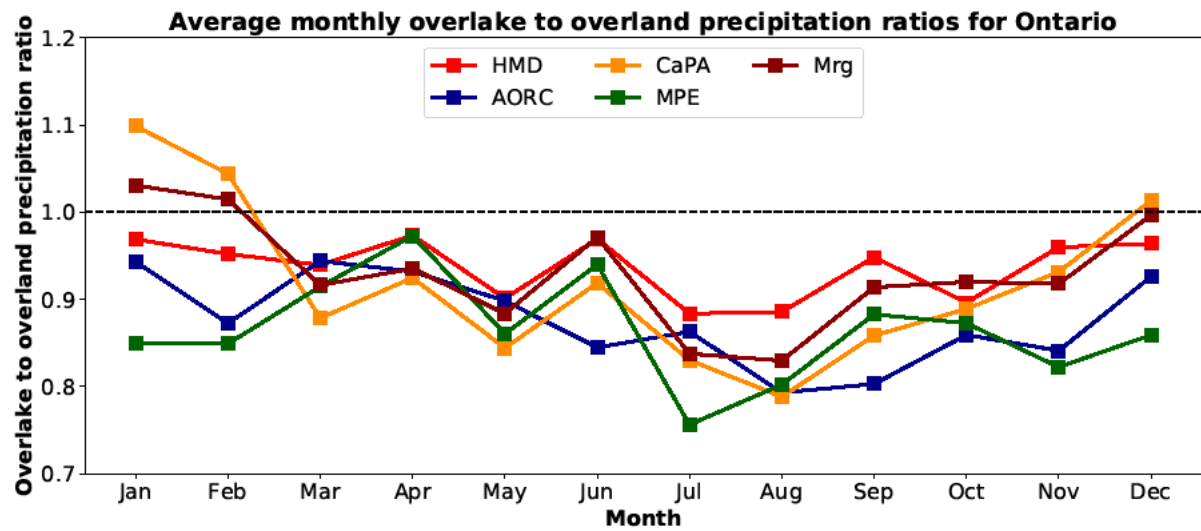


Fig. S8. Averaged monthly accumulated overland-to-overlake precipitation ratio for Lake Ontario sub-basin.