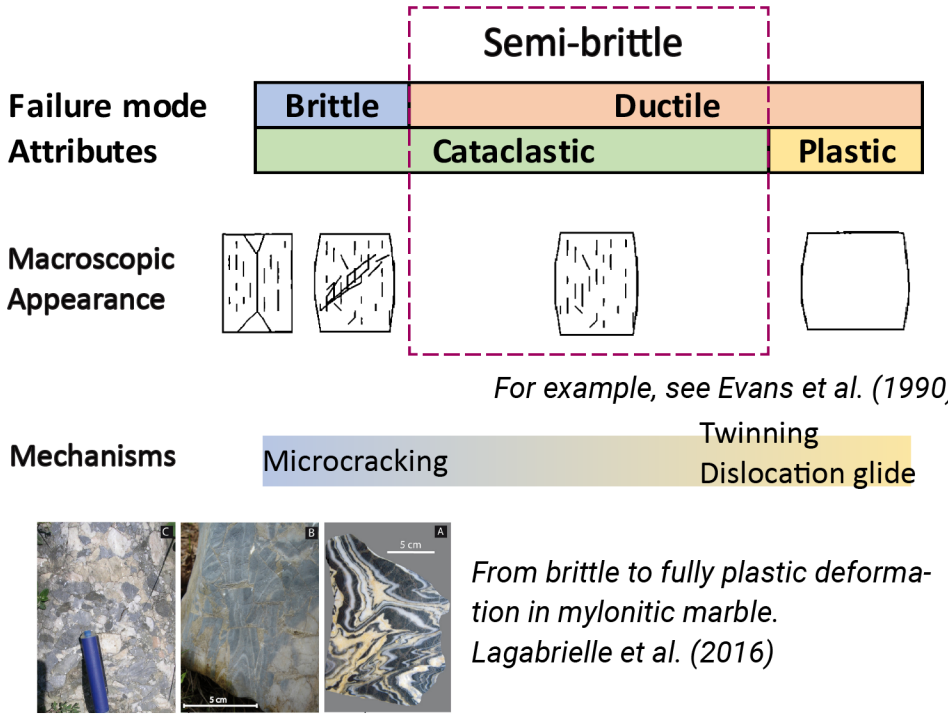


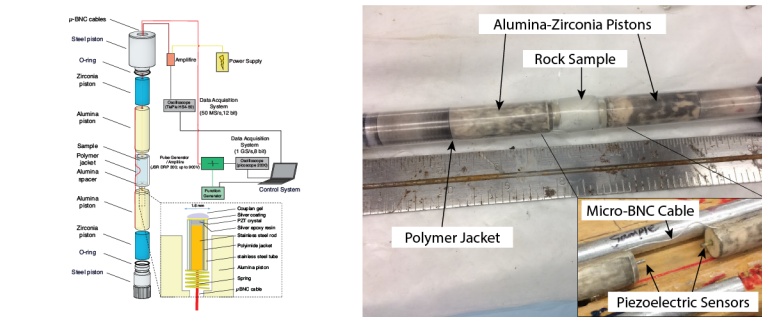
Semi-brittle deformation

- The **semi-brittle regime** is a transition between brittle to ductile deformation, where rocks fail with increasing degree of plasticity under increasing pressure, temperature, or decreasing strain rate.



Simulating condition at the brittle-ductile transition:
Experiment setup

- To investigate the mechanisms involved during semi-brittle flow, we deform **Carrara marble** over a **confining pressure (Pc)** range of **0.1-300 MPa** at room temperature.
 - Apply triaxial load to intact, dry rock sample.
 - Under constant strain rate ($\sim 10^{-4} \text{ s}^{-1}$) to a final strain of $\sim 10\%$.
 - Collect data: Axial displacement, applied load, active ultrasound pulsing, acoustic emissions (AEs).



The Paterson gas medium apparatus can routinely reach Pc up to 300 MPa. We modified it to collect passive and active ultrasound data.

Elastic velocity evolution

- We use active ultrasound pulsing to estimate the P wave velocity (V_p).
- The waveform correlation-based method allows us to track precise travel time changes.

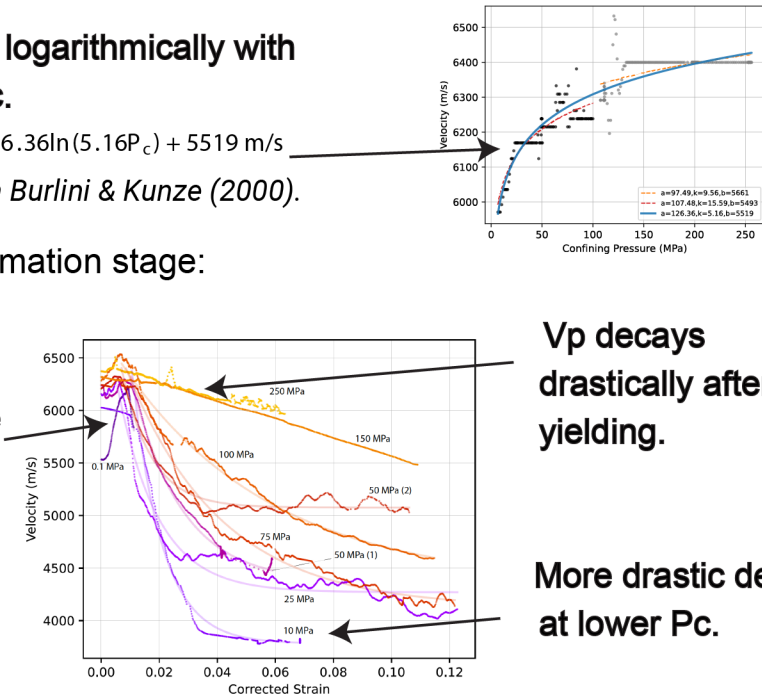
V_p increases logarithmically with increasing P_c .

$$V_p = 126.36 \ln(5.16 P_c) + 5519 \text{ m/s}$$

Consistent with Burlini & Kunze (2000).

- During the deformation stage:

V_p increases initially before yielding.



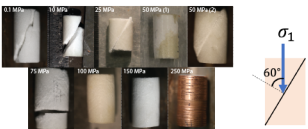
V_p decays drastically after yielding.

More drastic decay at lower P_c .

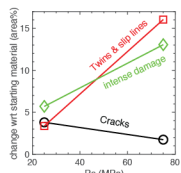
- Prevalent crackings after yielding at low P_c causes larger velocity decay (Guéguen & Schubnel, 2003).
Consistent with Schubnel et al., (2005), Schubnel et al., (2006).

Mechanical response and microstructure

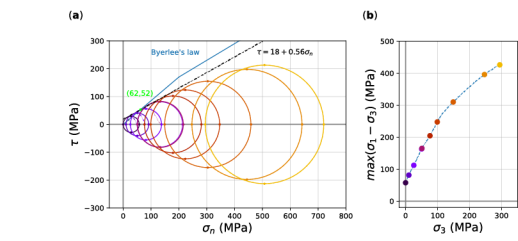
- Mechanical observations agree with previous studies for intact Carrara marble (Fredrich et al. 1989; for rock with existing fault, see Meyer et al., 2019).



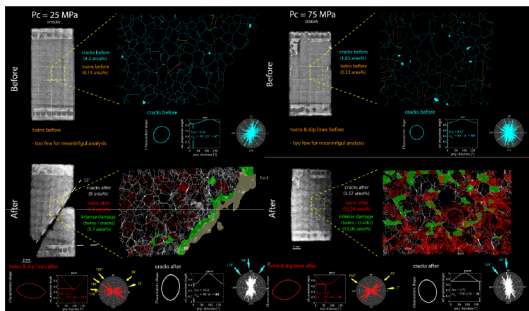
A major fault developed at $P_c \leq 50 \text{ MPa}$. Sample length $\sim 2 \text{ cm}$.



Increasing activity of crystal-plastic deformation mechanism with increasing confining pressure (P_c).

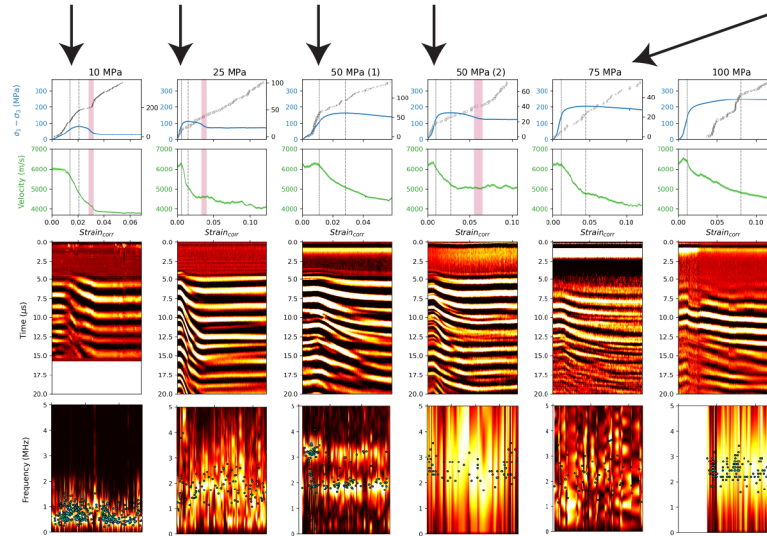


Mohr-Coulomb (M-C) envelope deviating from linear at $P_c > 200 \text{ MPa}$ suggests ductile deformation. $P_c=64 \text{ MPa}$ corresponds to the intersection of M-C envelope with Byerlee's law and the disappearance of macroscopic fault.



Acoustic emissions (AEs)

AE rate decreases at yield point.

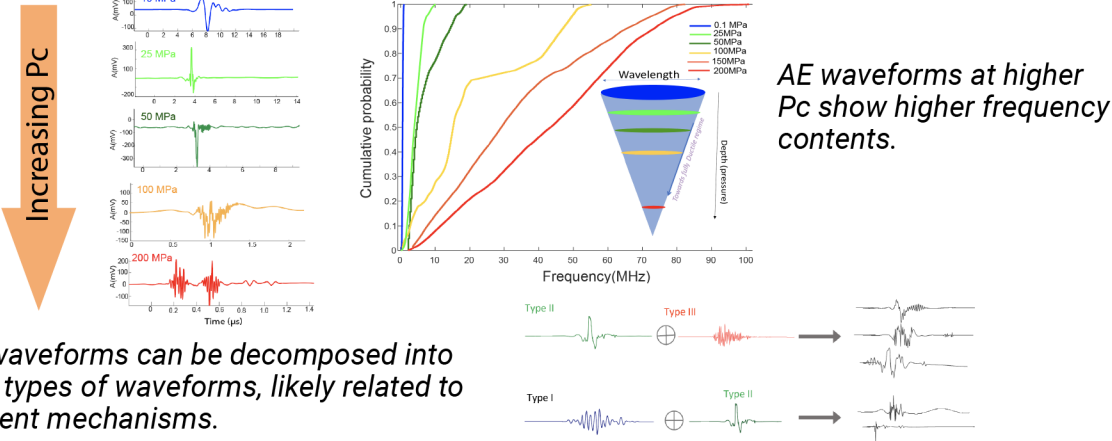


AE rate decreases when $P_c > 50 \text{ MPa}$. (with the exception of the experiment at 100 MPa)

AE's shift

- to higher frequencies at higher P_c .
- to lower frequencies at larger strain.

Comparison of the deformation stages of 6 experiments from $P_c=10-100 \text{ MPa}$ (left to right). [1st row] Stress-strain curve (blue), AEs (black circles), yield point and peak stress (the 1st and 2nd dashed lines), failure (red shade); [2nd row] V_p (green); [3rd row] Pulsing waveform ($t=0$ is source time); [4th row] AE spectra, median frequencies (cyan dots).



The waveforms can be decomposed into three types of waveforms, likely related to different mechanisms.

- During semi-brittle deformation, the elastic velocity increases before yielding and decreases drastically afterward due to damage. At higher P_c , the slower decay of velocity with increasing strain is related to increasing crystal-plastic deformation for strain accommodation.
- We record high-frequency ultrasound acoustic emissions (AEs) for the first time. These high-frequency AEs are more abundant at higher confining pressures (P_c) and are potentially associated with plastic mechanisms such as twinning and dislocation avalanches.

References:
Burlini, L., & Kunze, K. (2000). Fabric and seismic properties of Carrara marble mylonite. Physics and Chemistry of the Earth, Part A: Solid Earth and Geodesy, 25(2), 133-139.
Evans, B., Fredrich, J. T., & Wong, T. F. (1990). The brittle-ductile transition in rocks: Recent experimental and theoretical progress. The Brittle-Ductile Transition in Rocks, Geophys. Monogr. Ser. 56, 1-20.
Fredrich, J. T., Evans, B., & Wong, T. F. (1990). Micromechanics of the brittle to plastic transition in Carrara marble. Journal of Geophysical Research: Solid Earth, 94(B4), 4129-4145.
Guéguen, Y., & Schubnel, A. (2003). Elastic wave velocities and permeability of cracked rocks. Tectonophysics, 370(1-4), 163-176.
Lagabrielle, Y., Clerc, C., Vauchez, A., Lahfid, A., Labaume, P., Azambre, B., ... & Dautria, J. M. (2016). Very high geothermal gradient during mantle exhumation recorded in mylonitic marbles and carbonate breccias from a Mesozoic Pyrenean palaeomargin (Lherz area, North Pyrenean Zone, France). Comptes Rendus Géoscience, 348(3-4), 290-300.
Meyer, G. G., Brantut, N., Mitchell, T. M., & Meredith, P. G. (2019). Fault reactivation and strain partitioning across the brittle-ductile transition. Geology, 47(12), 1127-1130.
Schubnel, A., J. Fortin, L. Burlini, and Y. Guéguen (2005). Damage and recovery of calcite rocks deformed in the cataclastic regime, in High-Strain Zones: Structure and Physical Properties. Special Publication 245, edited by D. Bruhn and L. Burlini, pp. 203-221, Geological Society, London.
Schubnel, A., Walker, E., Thompson, B. D., Fortin, J., Guéguen, Y., & Young, R. P. (2006). Transient creep, aseismic damage and slow failure in Carrara marble deformed across the brittle-ductile transition. Geophysical Research Letters, 33(17).