

[Water Resources Research]

Supporting Information for

Simulating the role of biogeochemical hotspots in driving nitrogen export from drylands watersheds

¹Jianning Ren, ¹Erin J. Hanan, ²Aral Greene, ³Christina Tague, ⁴Alexander H. Krichels,
¹William D. Burke, ⁵Joshua P. Schimel, ²Peter M. Homyak

¹Department of Natural Resources and Environmental Science, University of Nevada, Reno, 89501, Reno, USA

²Department of Environmental Sciences, University of California, Riverside, 92521, Riverside, USA

³Bren School of Environmental Science & Management, University of California, Santa Barbara, 93106, Santa Barbara, USA

⁴USDA Forest Service Rocky Mountain Research Station, 87102, Albuquerque, USA

⁵Department of Ecology, Evolution and Marine Biology, University of California, Santa Barbara, 93106, Santa Barbara, USA

Contents of this file

Figures S1

Introduction

Figures S1 are supplementary figures to support results of vegetation initialization.

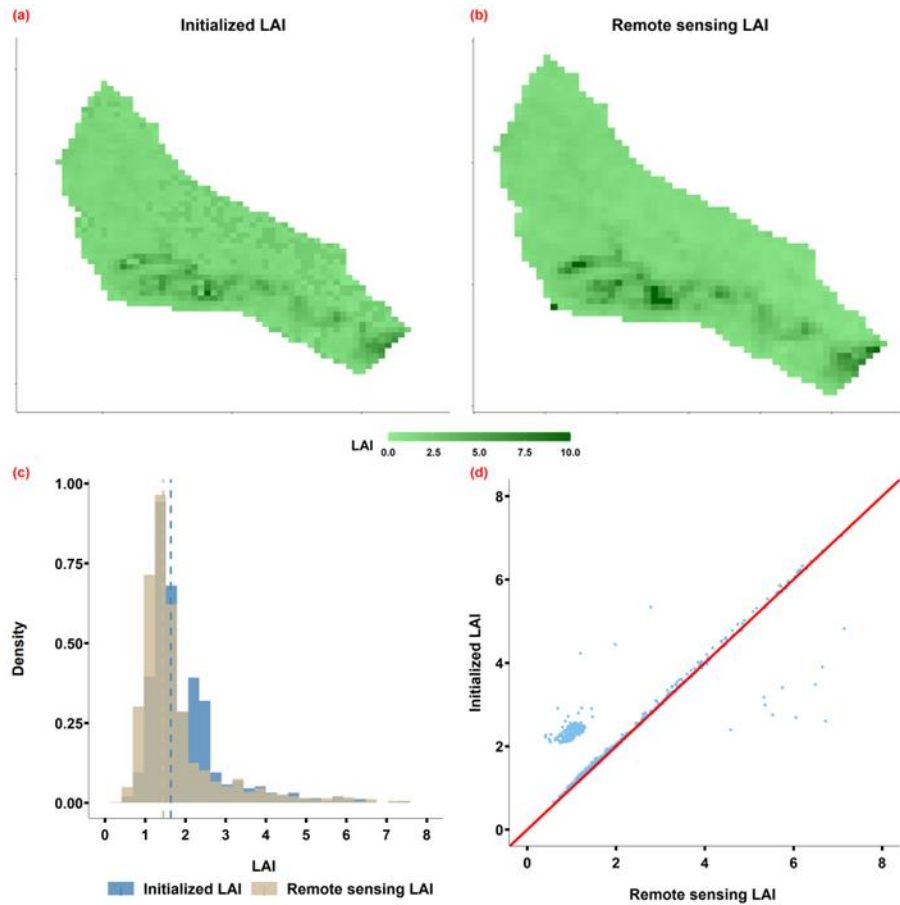


Figure S1. Vegetation initialization results for Bell 4: (a) initialized LAI from RHESSys, (b) target LAI calculated from a NAIP image from April 26, 2010, (c) comparison of density distributions between target and simulated LAIs; the dashed line is the mean of the two LAI distributions, and (d) scatter plot showing target LAI vs. initialized LAI for each patch.