

Making waves: Mirror Mode structures around Mars observed by the MAVEN spacecraft

Cyril Simon Wedlund¹, Martin Volwerk¹, Christian Mazelle², Jasper Halekas³, Diana Rojas-Castillo⁴, Jared Espley⁵, and Christian Möstl¹

¹Space Research Institute, Austrian Academy of Sciences, Graz, Austria

²Institut de Recherche en Astrophysique et Planétologie (IRAP), Université de Toulouse, CNRS, UPS, CNES, Toulouse, France

³Department of Physics and Astronomy, University of Iowa, Iowa City, IA, USA

⁴Instituto de Geofísica, Universidad Nacional Autónoma de México, Coyoacán, Mexico

⁵NASA Goddard Space Flight Center, Laboratory for Planetary Magnetospheres, Greenbelt, MD, USA

Key Points:

- First unambiguous detection of mirror mode structures at Mars, about 15 – 30 solar wind thermal proton gyroradii in size.
- Located in the deep magnetosheath close to the Magnetic Pile-up Boundary, they likely originate in the wake of the quasi-perpendicular shock.
- Detection using magnetic field and plasma data from the NASA/Mars Atmosphere and Volatile Evolution (MAVEN) mission.

Corresponding author: C. Simon Wedlund, cyril.simon.wedlund@gmail.com

Abstract

We present here an in-depth analysis of one time interval when quasi-linear mirror mode structures were detected by magnetic field and plasma measurements as observed by the NASA/Mars Atmosphere and Volatile Evolution (MAVEN) spacecraft. We employ ion and electron spectrometers in tandem to support the magnetic field measurements and confirm that the signatures are indeed mirror modes. Wedged against the magnetic pile-up boundary, the low-frequency signatures lasted on average ~ 10 s with corresponding sizes of the order of 15–30 upstream solar wind proton thermal gyroradii, or 10 – 20 proton gyroradii in the immediate wake of the quasi-perpendicular bow shock. Their peak-to-peak amplitudes were of the order of 30–35 nT with respect to the background field, and appeared as a mixture of dips and peaks, suggesting that they may have been at different stages in their evolution. Situated in a marginally stable plasma with $\beta_{\parallel} \sim 1$, we hypothesise that these so-called magnetic bottles, containing a relatively higher energy and denser ion population with respect to the background plasma, were formed upstream of the spacecraft behind the quasi-perpendicular shock. These signatures are very reminiscent of magnetic bottles found at other unmagnetised objects such as Venus and comets, also interpreted as mirror modes. Our case study constitutes the first unambiguous detection of mirror modes around Mars, which had up until now only been surmised because of the lack of high-temporal resolution plasma measurements.

1 Introduction

Mirror mode-like (MM) structures have been found everywhere in solar system plasmas (Tsurutani, Lakhina, et al., 2011), from the solar wind (Kaufmann et al., 1970; Winterhalter et al., 1995; Bale et al., 2009) to Earth (Tsurutani et al., 1984; Lucek et al., 1999b), Mars (Bertucci et al., 2004; Espley et al., 2004) and Venus (Volwerk et al., 2008a, 2008b), Jupiter (Erdős & Balogh, 1996) and Saturn (Violante et al., 1995), as well as comets (Mazelle et al., 1991; Glassmeier et al., 1993; Volwerk et al., 2014). MM waves are low-frequency long-wavelength transverse waves, usually linearly polarised and non-propagating in the plasma rest frame. Their non-linear evolution has been discussed both for electrons and protons (Kivelson & Southwood, 1996; Balikhin et al., 2010; Soucek & Escoubet, 2011). A MM structure classically takes the spatial shape of a magnetic bottle imprisoning pockets of high-density plasma drifting with the ambient plasma. Thus, in the data, MMs commonly appear as sudden dips or peaks in the magnetic field intensity, anti-correlated with plasma density variations and with only little magnetic field angular variation across the structure (Tsurutani, Lakhina, et al., 2011). They typically grow in a high- β plasma ($\beta_{\parallel} > 1$) from an ion temperature anisotropy itself triggered by any asymmetry upstream in the solar wind flow, by the ring-beam distribution of locally new picked-up ions, or typically as the downstream result of a quasi-perpendicular bow shock crossing. The mirror mode instability criterion (MMIC) is usually expressed as (Hasegawa, 1969):

$$\text{MMIC} = 1 + \sum_i \beta_{i\perp} \left(1 - \frac{T_{i\perp}}{T_{i\parallel}} \right) < 0 \quad (1)$$

where \parallel and \perp denote the directions parallel and perpendicular to the ambient magnetic field direction. T_i is the ion temperature and $\beta_{i\perp} = 2\mu_0 N_i k_B T_{i\perp} / |B|^2$ the perpendicular plasma beta with ion density N_i . In Eq. (1), the sum is over all ion species i , although electrons, neglected here, should rigorously speaking also be included, as they contribute to fulfilling the instability criterion although their anisotropy is usually smaller. MM structures, often organised in trains of structures and convected away at the ambient plasma velocity (drift-mirror instability), partake in the local plasma dynamics of the magnetosheath by limiting, together with the co-generated ion cyclotron instability, the temperature anisotropy in the plasma (Soucek et al., 2008).

At Venus, MM-like magnetosheath structures typically last from a few seconds up to about 30 s as observed by Venus Express (VEX) on its 24-h orbit around the planet (Volwerk et al., 2008b; Volwerk, Schmid, et al., 2016). This suggests that these structures may become as large as one planetary radius (assuming a plasma speed of about 200 km/s in the magnetosheath).

Bader et al. (2019), using VEX-ASPERA-4 ion mass analyser data (Barabash et al., 2007), showed that the slight ion temperature anisotropy arising at the bow shock was likely responsible for the generation of proton cyclotron and MM waves as seen by the Venus Express mission. Perpendicular heating of the local plasma was found to be most prominent in the sub-solar magnetosheath region, coinciding with MM-unstable conditions as calculated with the MMIC. These initial results are vindicated by more detailed analyses investigating the solar activity dependence of MM location and intensity, following the *B*-field-only study of (Volwerk, Schmid, et al., 2016).

At Mars, (Bertucci et al., 2004) proposed that certain low-frequency wave signatures in the NASA/Mars Global Surveyor (MGS) dataset could be consistent with MM behaviour although this could not be conclusively demonstrated because of insufficient instrumentation (no ion measurements). The same year, Espley et al. (2004) used MGS magnetometer data to argue for the presence of MM structures. More recently, using time-frequency analysis of magnetometer and plasma data from the NASA/Mars Atmosphere and Volatile Evolution (MAVEN) mission, Ruhunusiri et al. (2015) created maps of the low-frequency wave content of Mars' plasma environment for the first year of operations, using the hierarchical identification scheme of Song et al. (1994) based on transport ratios. Whereas slow mode waves (Alfvén waves and quasi-parallel slow waves) were statistically found to dominate both in the solar wind and in the magnetosheath region, waves consistent with mirror modes were on average confined on the dayside to the region closest to the magnetic pile-up boundary (MPB) and extending on the nightside in the magnetotail. This would seem to confirm the theoretical picture that MM structures, if originating upstream in the solar wind as so-called *magnetic holes* (MH) where they are routinely detected (Madanian et al., 2020), need time to grow when crossing the bow shock (BS) region. They may then become more prominent downstream of the shock when they are convected away by the shocked solar wind plasma. Because, in Ruhunusiri et al. (2015), both quasi-perpendicular and quasi-parallel bow shock crossings were mixed, conditions for MM wave generation were difficult to assess and will need further study.

The MAVEN mission, embarking dedicated magnetometer (Connerney et al., 2015) and plasma instruments (Halekas, Lillis, et al., 2015; McFadden et al., 2015), provides a unique opportunity to study these structures in more detail, at a planet where, comparatively to other magnetised and non-magnetised objects, only little study has been performed as of now. Because (i) (proton) plasma bulk speeds in the magnetosheath at Mars and Venus are of similar magnitude, reaching a large fraction of the upstream solar wind speed (Halekas, Brain, et al., 2017; Bader et al., 2019), and (ii) MAVEN has a relatively slower orbital speed of $0.6 \times 10^{-3} R_p/s$ with R_p the planet's radius, i.e., bow shock crossings at about 2 km/s, compared to VEX' $1.5 \times 10^{-3} R_p/s$, MM structures are expected to appear in the MAVEN data on at least similar timescales as for VEX' detections.

To our knowledge, we present in this study the first unambiguous observation of quasi-linear mirror mode structures at Mars. This event took place during the early part of the MAVEN mission on 25 December 2014 around 11:30 UT, in the receding phase of solar cycle 24. MMs were found wedged against the MPB behind a quasi-perpendicular bow shock crossing – a classical empirical picture reminiscent of Earth-bound observations. Detection was performed using magnetometer data only first at 1-Hz sampling frequency, which were then validated against the ion and electron plasma moments calculated as part of the scientific payload of MAVEN. Discussion on their possible origin is given. One of the purposes of this paper is to characterise these structures fully and validate the *B*-field-only detection criteria in order to prepare for a statistical analysis of the whole 2014-2021 MAVEN dataset.

2 Data analysis

2.1 Instrumentation

The MAG package consists of two tri-axial fluxgate magnetometers mounted at the extremity of two boomlets on MAVEN's solar panels (Connerney et al., 2015). It measures 3-component magnetic fields with a nominal frequency of 32 Hz and an accuracy better than 0.05%. Such high temporal resolution is not necessary to investigate the global behaviour of MM structures and hence a 1-s resolution is adopted throughout.

As part of the Particles and Fields package on board MAVEN, the Solar Wind Ion Analyzer (SWIA) is an electrostatic ion analyser measuring ion differential fluxes with a maximum temporal resolution of 4 s (Halekas, Taylor, et al., 2015). Sensitivity is automatically switched to accommodate for a large dynamic range of measured ion fluxes (magnetosphere and solar wind). SWIA has thus two three-dimensional (3D) scanning modes, one coarse ($360^\circ \times 90^\circ$, $\Delta\phi = \Delta\theta = 22.5^\circ$ in anode/deflection angles, energy 25 eV/q to 25 keV/q (Halekas, Ruhunusiri, et al., 2017), suitable for magnetosphere and pickup ions), one fine ($45^\circ \times 45^\circ$, $\Delta\phi = 4.5^\circ$, $\Delta\theta = 3.75^\circ$, 10% energy windows, suited to solar wind ions), both with 48 energy steps. Additionally, two separate 3D data packet telemetry modes are used on board which result in the Survey (lower cadence, maximum availability) and Archive (higher cadence but lower availability) modes. The combination of the scanning and telemetry modes results in four different data products, labelled in the following SWIFA (SWIA Fine Archive), SWIFS (Fine Survey), SWICA (Coarse Archive) and SWICS (Coarse Survey). The last two modes are thus those with lowest angular resolution and are usually selected in the magnetosheath.

Each of these four data products yields different moments at different temporal resolution. Onboard moments are automatically calculated either in coarse or fine modes, making use of the highest cadence available: in practice, they are usually provided at the highest possible temporal resolution of 4 s. Because SWIA does not discriminate between ion masses, the plasma composition needs to be assumed first (Halekas, Taylor, et al., 2015). Discrimination in the solar wind between H^+ and He^{2+} ions can be done on an energy-per-charge basis. Depending on composition assumptions, errors of the order of \sqrt{M} are introduced on the onboard-calculated moments, M being the mass of the plasma (for example, $M = 1$ amu for protons) (Halekas, Ruhunusiri, et al., 2017). The proton-dominated composition assumption is usually fulfilled in the not-so-dense parts of the Martian plasma environment, i.e., the solar wind and magnetosheath down to the outer edge of the Magnetic Pile-up Boundary (MPB, sometimes also referred to as Induced Magnetosphere Boundary or IMB), which the present study concentrates on. In regions where heavy ions dominate (as in the ionosphere and during deep-dip campaigns), it is however necessary to call in supporting instruments with mass-resolving capabilities, such as the Suprathermal and Thermal Ion Composition analyser (STATIC) (McFadden et al., 2015). In the following, ion moments of order 0 (density N_i in cm^{-3}), 1 (velocity vector \mathbf{V} in $km\ s^{-1}$) and 2 (pressure tensor $\bar{\mathbf{P}}$ in $eV\ cm^{-3}$ and associated temperatures T in eV) are used. Calculations of these moments depend also on the energy thresholds and extreme care must be achieved in their derivation (Halekas, Ruhunusiri, et al., 2017).

The Solar Wind Electron Analyzer (SWEA), located on a 1.5-m long boom, is a hemispheric electrostatic electron analyser designed to measure the energy and angular distribution of photo- and solar-wind electrons in the 3–4600 eV energy range in 64 bins, with a resolution of $\Delta E/E \sim 17\%$ and a maximum cadence of 2 s (Mitchell et al., 2016). It swipes almost all 4π sr of solid angle with a 22.5° angular resolution in the azimuth direction and 20° along the direction of the elevation angle. As MAVEN is a 3-axis stabilised spacecraft, the field of view (FOV) is broadened up to $360^\circ \times 120^\circ$ by the use of electrostatic deflectors theoretically covering 87% of the sky, but reduced to 79% due to spacecraft obstruction. Omnidirectional energy spectra (product 'SPEC') are calculated onboard at the highest temporal resolution by integrating the 3D distribution over angular sectors. Densities presented in the following are calculated from these onboard energy fluxes by integrating over the 64 energy bins, assuming isotropy over SWEA's blind spots. With its temporal resolution of ~ 2 s, SWEA comple-

ments SWIA for total plasma density measurements when structures lasting less than about 8 s ($2 \times \Delta t_{\text{SWIA}}$) are identified in magnetometer datasets, which is often the case for MMs. Because of quasi-neutrality, the electron density N_e must theoretically be equal to the ion density, i.e., $N_e \sim N_i$. The absolute determination of the electron density depends on different experimental parameters (such as the product used) and on the accuracy in the determination of the spacecraft potential. The electron density from the SPEC product has the better available time resolution but its absolute value can differ from the moments computed on the ground from the 3D velocity distribution. Hence, only absolute variations in electron densities may be used in those cases to corroborate ion density variations.

With the help of MAG, SWEA and SWIA, several temporal and spatial scales are probed, incrementally accessing plasma features at 1 s and below, to 2 s, to 4–8 s, respectively.

The coordinate system adopted in the following for all vectorial and tensorial quantities such as \mathbf{B} , $\overline{\mathbf{P}}$ or \mathbf{V} , is that of Mars Solar Orbital coordinates (also known as Sun-state coordinates), abbreviated MSO: centred on Mars, the X axis points towards the Sun from the planet's centre, Z is in the direction of the North pole from the orbital plane, and Y completes the right-hand triad, so that the X – Y plane is Mars' orbital plane around the Sun. All quantities are thus expressed in MSO coordinates.

2.2 Detection criteria: B -field only

Because of the ubiquity of magnetometers on board space missions (at the notable exception of Mars Express) and their usually high sampling frequency, mirror mode structures have traditionally been located by B -field only measurements (Lucek et al., 1999b; Joy et al., 2006; Soucek et al., 2008; Volwerk, Schmid, et al., 2016), relying on compressional and linearly polarised signatures. However, structures such as foreshock waves or fast mode waves linked to pickup ions are compressional in nature and may also fulfill these criteria. In those cases, plasma measurements are necessary to lift the ambiguity; one way is for example to check for the anticorrelation between density and magnetic field variations that is expected for MM structures (Hasegawa, 1969). Another is to evaluate, when possible, the MM-unstable condition with the help of the MMIC, assuming that the spacecraft crosses the source region of the MMs. In the following, B -field-only criteria are first used to pinpoint promising structures in the magnetosheath. They are then validated against plasma measurements (Sect. 2.3).

Table 1 lists the MM detection criteria chosen, with references that inspired them. Following previous studies at Venus, only quasi-linearly polarised waves are sought. As in Volwerk, Schmid, et al. (2016), magnetic field measurements are first low-pass filtered using a 2-min-wide Butterworth filter ($f_{\text{band}} = 1/120$ Hz, passband ripple 2 dB and stopband attenuation 20 dB) to approximate the total background field B_{bg} . A compressional signature consistent with MMs is defined by large fluctuations around the background field, i.e., $\Delta|\mathbf{B}|/B_{\text{bg}} = (|\mathbf{B}| - |\mathbf{B}_{\text{bg}}|)/B_{\text{bg}}$, with threshold values typically ranging from 0.1 to 0.2. For example, Volwerk, Schmid, et al. (2016) used a threshold of $\Delta|\mathbf{B}|/B_{\text{bg}} \geq 0.20$. When dip and peak mirror structures are both present in the studied interval, Joy et al. (2006) advocated the use of B -field lower and upper quartiles to determine the ‘true’ background level: this may be an issue especially when long portions of sinusoidal-like oscillations lead to an under- or over-estimation of the ambient field intensity and hence a correspondingly smaller $\Delta|\mathbf{B}|/B_{\text{bg}}$. We have checked that this issue does not significantly affect the results presented here by lowering the absolute fluctuation $\Delta|\mathbf{B}|/B_{\text{bg}}$ threshold from 0.20 to 0.15 in order to capture potentially more events.

A minimum variance analysis (Sonnerup & Scheible, 1998) (MVA) on the magnetic field directions is then performed with a 15-s moving window. The aim of MVA for MM detection is to constrain the wave polarisation of the detected structures (Lucek et al., 1999b). Ideally, linear structures are sought, adopting a cigar-shaped variance ellipsoid with maximum and intermediate eigenvalues λ_{max} and λ_{int} clearly distinct from one another (Génot et al., 2001; Tóthallyay & Erdős, 2002). In practice, non-linear structures have also been observed and stud-

ied theoretically (Califano et al., 2008), with elliptically polarised MMs found more often than stricto sensu linearly polarised ones (Génot et al., 2001; Génot, 2008). Consequently, criteria based on eigenvalue ratios should not be too constraining if one wants to capture candidate events straying somewhat from the pure linear wave polarisation (Sergeev et al., 2006), hence the “quasi-linear” nomenclature adopted here. In parallel, the quasi-linear nature of the sought-after waves can be reinforced by calculating the angle Θ_{\max} (Φ_{\min}) between the background field direction and the maximum (minimum) variance directions (i.e., eigenvectors). Prescriptions on these angles were adopted from (Volwerk et al., 2008b; Volwerk, Schmid, et al., 2016).

Quasi-linear MM wave candidates are finally automatically detected from B -field measurements only if the criteria listed in Table 1 are fulfilled: (i) compressional structures (criterion 1), (ii) quasi-linear wave polarisation (criteria 2 – 4) and (iii) sufficiently large average B -field intensities in a ± 2 min interval around the MM candidate (magnetosheath conditions, criterion 5). Values for each criteria have been determined empirically starting from theoretical considerations (Price et al., 1986), past observations at Earth and Venus, and tweaked to the MAVEN Mars dataset to capture at least once most structures seen in a test interval. Criterion 5 ($\langle B_{bg} \rangle \geq 11$ nT), inspired by a similar one from Dimmock et al. (2015) for observations at Earth and used in Simon Wedlund et al. (2021) with some degree of success to isolate solar wind areas in MAVEN B -field data, aims at removing potential outliers outside of typical magnetosheath B -field levels in an interval around the MM candidate.

Additionally, non-Gaussian statistics may help with the classification of MM candidates (Osmane et al., 2015). The propensity of the signal distribution in a given time interval (containing, for instance, m successive measurements of B) towards peaks or dips can be measured by its skewness, expressed as $\text{Skew} = \frac{1}{m} \sum_{j=1}^m (|\mathbf{B}_j| - B_{bg})^3 / \sigma^3$, where σ is the standard deviation of the module $|\mathbf{B}_j|$ of \mathbf{B} at each time step j . A positive skewness denotes the presence of peaks whereas a negative skewness points to the presence of dips (criterion 6 in Table 1). Similarly, the excess kurtosis, defined as $\text{eKurt} = \frac{1}{m} \sum_{j=1}^m (|\mathbf{B}_j| - B_{bg})^4 / \sigma^4 - 3$, gives a measure of the fluctuations of the signal (presence of outliers in the tail of the probability distribution function): a negative kurtosis, significantly different from 0 (pure Gaussian statistics), implies a B -field signal with large oscillations, a characteristic that trains of MMs share (Osmane et al., 2015). This is given in Criterion 6.

Finally, magnetic azimuth and elevation angles, defined as $az = \arctan(B_y/B_x)$ and $el = \arctan(B_z / \sqrt{B_x^2 + B_y^2})$, can be calculated. For theoretical reasons (Price et al., 1986; Treumann et al., 2004) pertaining to their wave growth (linear MMs have small parallel wave vector component), the magnetic field is expected to rotate by less than about 15° for linear MMs, a prescription that can be checked against after the detection is performed.

Note that the eigenvalue criteria (Criteria 3 and 4) aim at reinforcing the quasi-linear polarised nature of the wave modes, ensuring that the maximum variance direction (the tangential component of the eigenvector triad) is well defined and that quasi-degeneracy of the covariance matrix is kept to the two minimum eigenvalues. Although the direction of the wave vector \mathbf{k} is in general ill-determined, criteria 4–5 imply that the variance ellipsoid is in general cigar-shaped, and elliptically-polarised structures are mostly filtered out to the benefit of linearly polarised waves.

2.3 Validation with plasma measurements

In parallel, SWIA plasma densities N_i for the available modes are calculated from the moments of order 0 of the ion distribution function. Moreover, the background-normalised amplitude $\Delta N/N = (N_i - N_{bg})/N_{bg}$ is calculated where N_{bg} , the background plasma density, is obtained by applying a low-pass Butterworth filter to the SWIA N_i densities, with the same filter parameters as for the magnetic field. In this way, $\Delta N/N$ has the advantage of changing signs for peaks or dips in the signal. For comparison, total B -field intensities are downsam-

Table 1. Magnetic field-only criteria for detection of mirror modes and their classification. The absolute B -field fluctuation is estimated by $\Delta|\mathbf{B}|/B_{\text{bg}}$, with B_{bg} the background intensity (low-pass Butterworth filter). A moving MVA analysis with a 15-s window is performed. Θ_{maxV} (Φ_{minV}) is the angle between the maximum (minimum) variance direction and that of the background field. $\lambda_{\text{max}}/\lambda_{\text{int}}$ is the ratio of the maximum and intermediate eigenvalues, whereas $\lambda_{\text{int}}/\lambda_{\text{min}}$ is the ratio of the intermediate and minimum eigenvalues, as determined from the MVA analysis. $\langle B_{\text{bg}} \rangle$, performed on an interval ± 2 min around the potential candidate MM, further checks for potential outliers that are tentatively in the solar wind. Criterion 6 permits the MM classification into predominantly dips and peaks in the time interval considered (for example ± 2 min around the detected candidate). Criterion 7 checks for magnetic azimuth and elevation angles (az, el) The *initial values* are those used for the first detection of the structures (Sect. 3.2), whereas the *revised values* were manually obtained after validation of the detections (Sect. 4).

#	Criterion	Initial Value	Revised	Reason	Example reference(s)
1	$\Delta \mathbf{B} /B_{\text{bg}}$	≥ 0.15	≥ 0.14	Compressional structure	Génot, Budnik, Jacquey, et al. (2009); Volwerk, Schmid, et al. (2016)
2	Θ_{maxV}	$\leq 20^\circ$	$\leq 23^\circ$	Linearly polarised waves	Lucek et al. (1999a); Volwerk, Schmid, et al. (2016)
	Φ_{minV}	$\geq 70^\circ$	$\geq 70^\circ$	Linearly polarised waves	Lucek et al. (1999a); Volwerk, Schmid, et al. (2016)
3	$\lambda_{\text{max}}/\lambda_{\text{int}}$	≥ 3	≥ 2.5	Linearly polarised waves	Génot et al. (2001); Soucek et al. (2008)
4	$\lambda_{\text{int}}/\lambda_{\text{min}}$	≤ 6	≤ 8	Linearly polarised waves	Génot et al. (2001); Soucek et al. (2008)
5	$\langle B_{\text{bg}} \rangle$	≥ 11 nT	–	Magnetosheath conditions	Dimmock et al. (2015); Simon Wedlund et al. (2021)
6	Skew	< 0		dips	Osmane et al. (2015); Dimmock et al. (2015)
		> 0		peaks	Osmane et al. (2015); Dimmock et al. (2015)
	eKurt	≤ 0		non-Gaussian fluctuations	Osmane et al. (2015)
7	(az, el)	$\leq 15^\circ$		Linearly polarised waves	Price et al. (1986)

pled to SWIA's mode resolution and normalised amplitudes are calculated in the same way, i.e., $\Delta|\mathbf{B}|/B_{\text{bg}} = (|\mathbf{B}| - B_{\text{bg}})/B_{\text{bg}}$. When $\Delta|\mathbf{B}|/B$ and $\Delta N/N$ are of opposite signs at a candidate MM, they are in effect anticorrelated. Those candidates that fulfill the B -field-only criteria and the anticorrelation signature are considered MM signatures proper.

For further confirmation of the nature of the MM candidates, two separate criteria are further checked against:

- Direction (also, criterion 7 in Table 1): the magnetic field direction in a region containing MMs should not change by more than 15° on average. This stems from theoretical considerations (Price et al., 1986; Tsurutani, Echer, et al., 2011) and the fact that MM, as linearly polarised waves, are predominantly growing at large angles to \mathbf{B} . Such directional change can be measured by the azimuth and elevation angles of the magnetic field, as shown in Fig. 5.
- Instability criterion MMIC (Eq. [1]): because large uncertainties in deriving reliable temperatures from the diagonalisation of the higher-order moment (the pressure tensor) may arise due to composition assumptions, caution must be exercised when calculating MMIC in the inner magnetosheath and, especially, close to the MPB, where heavier ions may be present. In the time span where MM-like structures were found in the present study (11:26-11:30 UT), STATIC energy-mass spectrograms agreed with SWIA and additionally showed that both He^{2+} and heavier ions such as O^+ were present in the higher energy-per-charge levels. However, choosing a reduced energy threshold to restrain the contamination did not significantly impact the determination of the moments of the ion distribution function with SWIA. Consequently, in this study, the moments were calculated in the full range $25 - 25 \times 10^3$ eV/q.

In order to calculate the MMIC criterion from Eq. (1), ion pressures P_{\parallel} and P_{\perp} in the parallel and perpendicular direction with respect to the local \mathbf{B} must be first estimated. This is done using the full pressure tensor calculated as the moment of order 2 of the ion distribution function from the appropriate SWICA mode (maximum angular resolution available). Temporal resolution of the SWICA mode for this study is 8 s. The pressure tensor is symmetric by construction and consists of 9 elements, i.e., 3 diagonal elements P_{xx} , P_{yy} and P_{zz} , and a total of 6 off-diagonal elements $P_{xy} = P_{yx}$, $P_{xz} = P_{zx}$ and $P_{yz} = P_{zy}$. Two methods are usually adopted to obtain P_{\parallel} and P_{\perp} . They are presented in more detail in Appendix B. In short, Method 1 uses a direct diagonalisation of the pressure tensor, whereas Method 2 first rotates the pressure tensor into a Mean Field-Aligned coordinate system (MFA, see Appendix A) with one direction along the mean \mathbf{B} -field and diagonalises the remaining 2×2 tensor to obtain the two perpendicular directions (Halekas, Brain, et al., 2017). Method 1 may provide a quick first estimate of directions but implicitly assumes that one of the principal axis of the tensor ellipsoid is aligned with the magnetic field direction, an hypothesis that is usually false. Moreover, off-diagonal terms still present in the MFA coordinate system have physical significance: indicative of non-gyrotropy (Swisdak, 2016), they correspond to shear stresses in the ambient plasma, which Method 1 ignores. Thus, Method 2 is preferred in the following.

As pointed out in Halekas, Brain, et al. (2017), the limited field of view (FOV) of the SWIA instrument ($360^{\circ} \times 90^{\circ}$ for the SWICA mode) impacts the quality of the retrieval. At times when the ambient magnetic field is in the FOV of SWIA, one of the perpendicular components is difficult to estimate (the maximum eigenvalue is usually kept as an upper limit), whereas at times when it is not in the instrument's FOV, the derivation of the parallel pressure, and hence parallel temperature, will suffer from large uncertainties. In the interval of study where MM-like structures were detected (2014-12-25 11:26-11:30 UT), the background magnetic field direction was unfortunately not in the FOV of the instrument (with angles between the Z axis of SWIA and the magnetic field direction exceeding 135° , see Fig. 2). This made the determination of the parallel component of the pressure tensor difficult, resulting in an underestimate of P_{\parallel} . In this study, the MFA direction is evaluated by taking the low-pass filtered \mathbf{B}_{bg} (as calculated in Sect. 2.2) since the average field over the SWICA measuring time of 8 s (taken as ± 4 s around the middle of the scanning interval) gives almost identical results in the time span considered in this study (Appendix A).

The final derivation from the pressure tensor of the parallel and perpendicular temperatures ($T_{\parallel} = P_{\parallel}/N_i$ and $T_{\perp} = P_{\perp}/N_i$ with the temperatures in eV), as well as the plasma- β_{\perp} with respect to the background field \mathbf{B}_{bg} assumes only one ion species (protons), enabling the estimation of the MMIC.

For a faster and automatic detection bypassing the MMIC criterion, the normalised (electron and ion) density variations in anticorrelation with $|B|$ -field variations proved to be an adequate and sufficient tool to confirm the presence of MM structures during the time intervals considered in this study.

3 Observations

3.1 General description

On 25 December 2014 around 09:46 UT and around 11:40 UT, two prominently quasi-perpendicular bow shock crossings took place. The corresponding orbit of MAVEN is shown in MSO coordinates in Fig. 1 between 09:00 and 12:00 UT, and shown together with the statistical position of the bow shock (BS), the direction of the background magnetic field (green) and that of the normal to the shock surface (blue). The normal to the BS was calculated using the analytical model of Gruesbeck et al. (2018) corrected with the method described in Simon Wedlund et al. (2021) assuming the shock surface to be smooth. Moving first from the solar wind to the magnetosheath, MAVEN resided approximately 1 hour in the magnetosphere, circling the planet and exiting again into the upstream solar wind around 11:40:16 UT in the

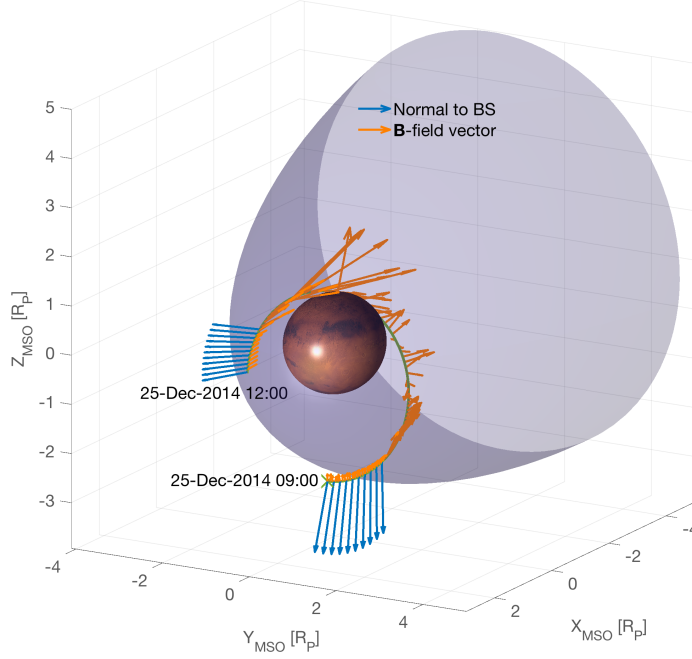


Figure 1. Event configuration with MAVEN orbit in blue from 09:00 to 12:00 UT on 25 December 2014, in MSO coordinates (units normalised to Mars' mean radius R_p). The X_{MSO} axis points towards the Sun. The vectors normal to the bow shock are drawn as blue arrows, whereas the average magnetic field directions during the orbit are drawn as orange arrows. The bow shock model shown and used for the bow shock normal calculations is that of Gruesbeck et al. (2018) (all points).

($+Y_{\text{MSO}}, +Z_{\text{MSO}}$) dayside quadrant, as predicted by the automatic predictor-corrector bow shock location of Simon Wedlund et al. (2021). The angle between the average magnetic field and the normal to the bow shock was found for this crossing to be $\theta_{\text{Bn}} = 76^\circ$, assuming a smooth bow shock surface.

Figure 2 presents an overview of magnetic field and plasma measurements between 11:20 and 11:50 UT. The first two panels show the total magnetic field intensity $|B|$ and magnetic cone and clock angles as a measure of the field's direction, defined as $\theta_{\text{cone}} = \arctan\left(\sqrt{B_y^2 + B_z^2}/B_x\right)$ and $\phi_{\text{clock}} = \arctan(B_z/B_y)$. A cone angle of 0° (180°) implies a sunward (antisunward) B -field direction, whereas a clock angle of 0° (90°) indicates a direction in the $+Y_{\text{MSO}}$ ($+Z_{\text{MSO}}$) direction. Several regions encountered by MAVEN in its exit towards the upstream solar wind are highlighted: after spending some time in the magnetosphere (labelled 'MSP') with large rotations of the field first directed roughly antisunward and then abruptly rotating towards the sunward direction, magnetic field fluctuations become attenuated indicating the presence of the MPB (depicted as a grey zone) when transiting towards the magnetosheath (labelled 'MSh') around 11:24:45 UT. In the magnetosheath, several quasi-periodic dips and peaks are observed in sequence in the magnetic field data, about ten minutes before the quasi-perpendicular BS crossing into the solar wind ('SW'). Field directions remain on average fairly constant in the magnetosheath, but tend to fluctuate more and more when the spacecraft closes in on the shock structure. In the upstream solar wind, no indication of MHs was found.

The third panel of Fig. 2 shows for reference the ion velocity measured by SWIA in SWICA mode, with dashed lines emphasising the times when they should be interpreted with caution because of incorrect composition assumptions and field-of-view restrictions. The plasma

is moving in the magnetosheath at velocities of about 150 km/s on average, with little change in direction and amplitude until the spacecraft is in the upstream solar wind around 11:40 UT.

The two last panels display the ion and electron differential flux spectra from SWIA and SWEA (omnidirectional), respectively, with Φ_j the differential particle flux of charged species j (with $j=[\text{ions}, e^-]$). It is important to remark that SWIA's field of view during this interval does not encompass the direction of the magnetic field, resulting in a likely underestimate of the calculated moments along the parallel direction to the field (See Sect. 3.2). In the magnetosphere ('Msp'), two separate ion populations of different energies but with rather constant fluxes can be seen, one below 100 eV/q, the other above 400 eV/q, likely mixing fast protons and heavier species produced by EUV photoionisation of Mars' ionosphere. This coincides with lower electron fluxes with energies around 20–25 eV, typical of photoelectron energies. In the magnetosheath ('Msh'), the ion spectra broaden in energy with a main population of protons at a mean energy of about 200 eV/q and large flux fluctuations that appear related to the large magnetic field fluctuations seen then. Similar effects are seen on the electron spectra, with an intensification of electron energies and fluxes together with a high flux variability. Ion differential fluxes reach about $4 \times 10^5 \text{ cm}^{-2} \text{ s}^{-1} \text{ sr}^{-1} \text{ eV}^{-1}$ whereas mean electron fluxes are around $10^8 \text{ cm}^{-2} \text{ s}^{-1} \text{ sr}^{-1} \text{ eV}^{-1}$.

Closer to the bow shock around 11:37 UT, in the turbulent wake and transiting into the solar wind, the magnetic field varies a lot and a steady drop in ion energies with an increase in ion fluxes can be seen. This ion energy drop is concomitant with a broadening of the electron energy distribution, with electron fluxes above $2 \times 10^8 \text{ cm}^{-2} \text{ s}^{-1} \text{ sr}^{-1} \text{ eV}^{-1}$ around 25 eV energy. In the solar wind, two stable main populations of ions are present, interpreted as protons (yellow-orange broad line) and He^{2+} particles (blue-green thinner line) at about 600 and 1200 eV/q, equivalent to a bulk speed of $\sim 340 \text{ km/s}$.

The wave content for the full interval is shown in Fig. 3, where the power spectral densities (PSD) for the compressional, right-handed and left-handed polarisation terms are plotted using the 32-Hz magnetic field data. First, the matrix of passage \mathbf{M}_{MFA} from MSO coordinates to the MFA reference frame is calculated as in Eq. (A1) (Appendix A), using the background magnetic field \mathbf{B}_{bg} (low-pass Butterworth filter, see Sect. 2.2) as the z direction of the MFA system. Then the MSO \mathbf{B} -field vector is rotated into MFA so that the two first directions are perpendicular to \mathbf{B}_{bg} , noted $B_{\perp 1}$ and $B_{\perp 2}$, and the third one is parallel to \mathbf{B}_{bg} , noted B_{\parallel} . The compressional component, left-handed and right-handed polarisations are thus defined as:

$$B_C = B_{\parallel} \quad \text{Compressional} \quad (2)$$

$$B_R = (B_{\perp 1} + iB_{\perp 2})/2 \quad \text{Right-handed polarisation} \quad (3)$$

$$B_L = (B_{\perp 1} - iB_{\perp 2})/2 \quad \text{Left-handed polarisation} \quad (4)$$

where i is the imaginary unit. Cross-spectrum analysis is performed with a FFT Welch method to evaluate the PSD of each component (Welch, 1967), using a moving window of 1024 consecutive points (32 s) for a shift of 64 points (2 s).

Most of the wave power is observed at frequencies much lower than the local cyclotron frequency, assuming only protons throughout, and, additionally, at frequencies lower than the solar wind proton cyclotron frequency (at about 0.1 Hz). In the upstream region between 11:43 and 11:50 UT, the signal appears mostly compressive with no right-handed polarisation component, which is consistent with the presence of proton cyclotron waves (Romanelli et al., 2016). Downstream of the shock, the wave power is more evenly redistributed which suggests no clear relation between the upstream turbulence and the turbulence in the magnetosheath.

3.2 In-depth analysis

In Figs. 2 and 3, two vertical dashed lines highlight one interval between 11:26 and 11:30 UT where fluctuations lodged in against the MPB appear to contain MM-like structures. This interval is shown as a zoom-in in Fig. 4, which displays magnetic field $|B|$, ion and electron den-

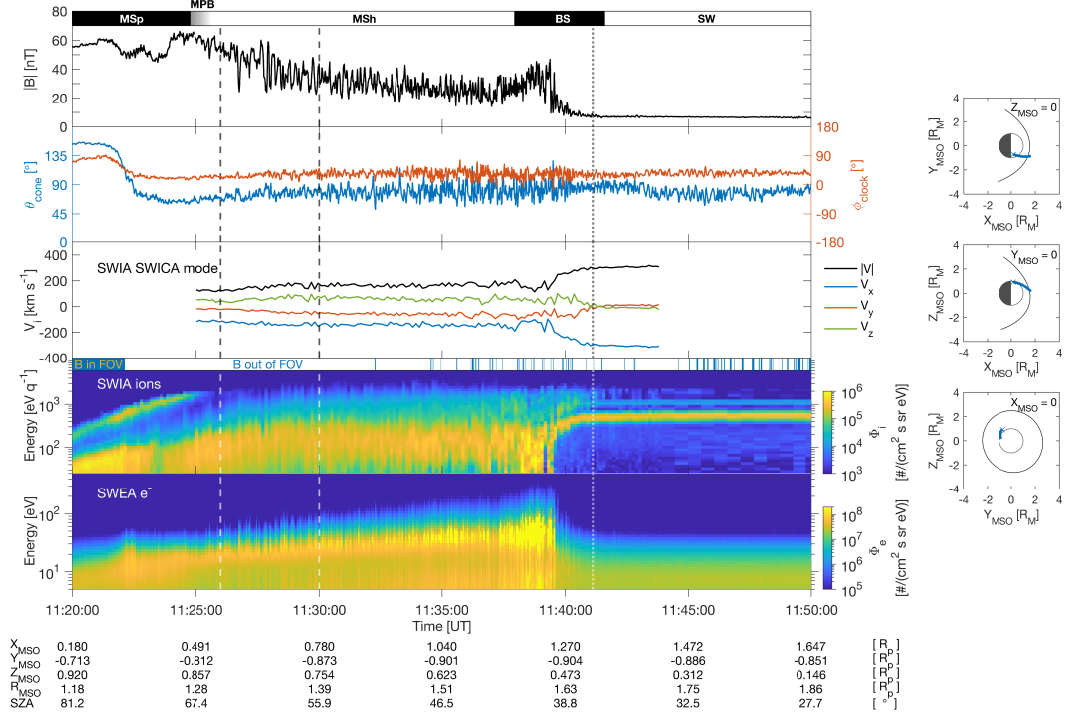


Figure 2. Magnetic field, ion and electron plasma measurements measured with MAVEN, 25 December 2014 between 11:20 and 11:50 UT. Left, from top to bottom: module of the magnetic field from MAG, magnetic clock and cone angles, ion velocity vector measured by SWIA (SWICA mode), ion flux spectra measured by SWIA (SWICA mode), electron flux spectra measured by SWEA. Energy-time spectra show the particle differential fluxes Φ_i and Φ_e in $\text{cm}^{-2} \text{s}^{-1} \text{sr}^{-1}$. Identified regions in Mars' plasma environment are as follows: solar wind (SW), bow shock, its substructures and wake (BS), magnetosheath (MSh) and magnetosphere (MSp). The position of the bow shock is automatically estimated via the predictor-corrector algorithm of Simon Wedlund et al. (2021) and shown as a vertical dotted line around 11:41 UT. The two vertical dashed lines encompass the interval where clear mirror mode signatures were found, as explained in the text. SWICA velocities are valid mostly inside the magnetosheath, hence no value is shown in inside the MPB and far up-stream of the shock. Immediately above the SWIA spectra, the associated field-of-view (FOV) information is given with blue regions showing when the B -field direction \mathbf{B} is in the FOV of the instrument, and white regions when it is not. Right: Sections in $X_{\text{MSO}} - Y_{\text{MSO}}$, $X_{\text{MSO}} - Z_{\text{MSO}}$ and $Y_{\text{MSO}} - Z_{\text{MSO}}$ planes of MAVEN's orbit during that time, with the cross representing the starting point at 11:20 UT. The bow shock shape model in black is that of Gruesbeck et al. (2018) (all points) and is represented on the panels on the right by a dotted vertical line. Coordinates (X_{MSO} , Y_{MSO} , Z_{MSO} , planetocentric distance R_{sc}), expressed in units of Mars' planetary radius R_p , as well as the solar zenith angle (SZA) are indicated for a few time stamps.

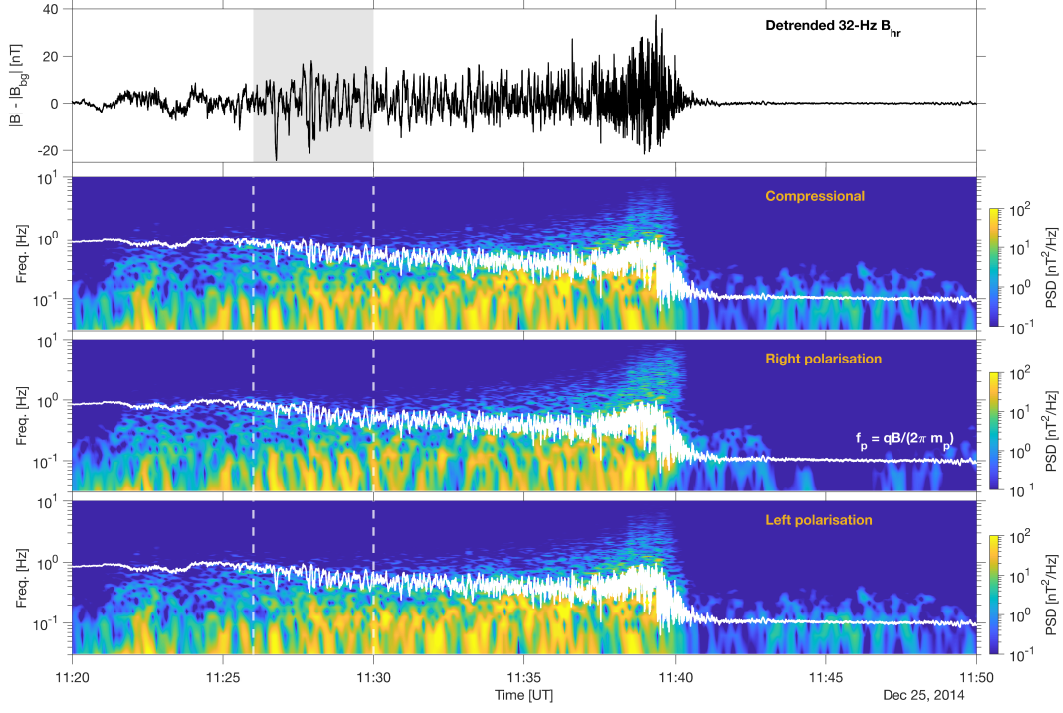


Figure 3. High-resolution magnetic power spectral density (PSD) as recorded by MAVEN/MAG, 25 December 2014 between 11:20 and 11:50 UT (see Fig. 2 for the same time interval). From top to bottom: module of the detrended 32-Hz magnetic $|B| - |B_{bg}|$, compressional PSD, right-handed polarisation PSD and left-handed polarisation PSD. The plasma frequency calculated as $f_p = \frac{q|B|}{2\pi m_p}$ is superimposed as a white continuous line on all three bottom plots. The two vertical dashed lines and grey zone encompass the interval where clear mirror mode signatures were found, as explained in the text.

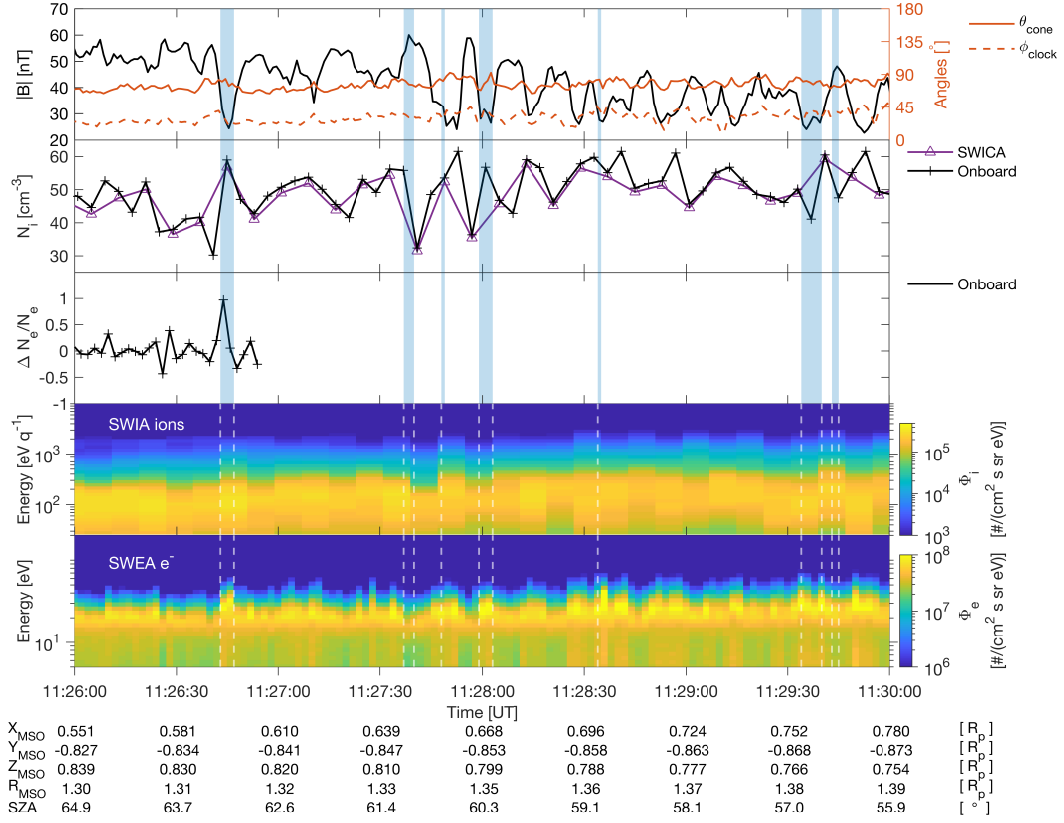


Figure 4. Magnetic field, ion and electron plasma measurements measured with MAVEN, 25 December 2014 between 11:26 and 11:30 UT. From top to bottom: module of the magnetic field from MAG (1 Hz resolution in black and 32 Hz infraposed in gray) with clock and cone angles in blue, ion densities calculated on board or retrieved from SWIA (SWICA mode), electron density relative variations $\Delta N_e/N_e$ (forward differences) from SWEA, omnidirectional ion flux spectra measured by SWIA, omnidirectional flux energy spectra measured by SWEA. During the interval, the FOV of SWIA did not encompass the magnetic field direction. The vertical blue regions mark the identified interval with candidate mirror mode structures detected by B -field only criteria (see also Fig. 5 and Table 1). Coordinates ($X_{\text{MSO}}, Y_{\text{MSO}}, Z_{\text{MSO}}$, planetocentric distance R_{sc}), expressed in units of planetary radius R_p , as well as the solar zenith angle (SZA) are indicated for the relevant time stamps.

sities N_i and N_e , and ion/electron energy spectra. The resolution of the ion spectrum and calculated moments for the SWICA mode shown here is 8 s, whereas the onboard moments have a resolution twice as good, i.e., 4 s. SWICA and onboard moments agree rather well during this interval, with fluctuations closely following each other. The maximum 2-s resolution electron densities are unavailable after 11:26:45 UT; electron density estimates calculated from the electron distribution function have afterwards a reduced cadence of 8 s, which is too large to be of use for the typical width of the dips found in the magnetic field data. Hence, only the maximum resolution available is displayed; moreover, because these electron densities are not fully calibrated, only relative variations, calculated here as a forward difference, are shown.

Candidate MM detections using the B -field only criteria of Table 1 are highlighted as blue-shaded rectangles. Skewness and excess kurtosis of the interval 11:26–11:30 UT are -0.20 ± 0.16 and -1.09 ± 0.32 , respectively, indicating an interval containing mostly dips and a heavy tail distribution with large fluctuations. The first large dip in B -field around 11:26:45 UT coincides with an increase in both electron and ion fluxes, flux energies and densities, an observation that seems accurate for all other detected dips in the interval, except the last one around 11:29:40 UT for which the SWICA poor spectral resolution is inconclusive, possibly indicating the slow transition from dips to peaks in the MM B -field structure (see Joy et al. (2006) for a clearer example of this effect). This is confirmed by the fact that when shifting the interval window by increments of +30 s (11:26:30–11:31:30 UT, etc.), the skewness, initially negative, steadily increases to become positive for a shift of +1 min. Throughout these periods, both magnetic field clock and cone angles appear very stable, which is consistent with the presence of MM structures. Looking more closely into the magnetic field measurement (top panel), it appears oscillations in the total B -field take place starting around 11:27:30 UT, with a quasi-period of ~ 9.3 s, as determined by a Fourier analysis of the smoothed detrended signal. Several of these peaks or dips are not captured by the automatic detection algorithm.

Figure 5 displays the magnetic field MM analysis and plasma density variations for the same interval 11:26–11:30 UT, with the associated MM candidate structures (vertical blue rectangles) detected in the magnetosheath by the B -field-only criteria of Table 1 (column ‘initial values’). Density variations calculated either from the onboard moments and from the SWICA mode exhibit very similar variations throughout the interval. The detected candidate MM all present a clear B – N_i anticorrelation as demonstrated with the relative B -field and density variations $\Delta B/B$ and $\Delta N_i/N_i$. The gain in temporal resolution (4 s) from the onboard datasets allows the ion density variations to follow even more closely those of the magnetic field throughout the interval. A supplementary indicator is given for the first MM detection (dip) around 11:26:45 UT by SWEA’s $\Delta N_e/N_e$ at a resolution of 2 s, which allows this 8–9 s-long structure to be probed with almost 4 electron density data points. The B – N_i and B – N_e anticorrelations for this event are striking, and represent the clearest and most unambiguous MM signature detected to date at Mars. The consistency found between onboard and manually calculated moments, as well as the electron density data for this event, gives confidence for the rest of the interval. Moreover, it suggests that possibly every interval with increased electron and ion fluxes, energies and densities with respect to the background levels in Figs. 4 and 5 are MMs proper.

Out of a measurement window of 240 s, 21 s fulfilled the MM criteria above, resulting in 4–5 separate structures if two structures are separated by at least 8 s (that is, half of the MVA window and, also, the temporal resolution of the SWICA moments in this region), as in Volwerk, Schmid, et al. (2016). The B -field-only algorithm captured many prominent MM structures that can be identified by eye, but discarded those that are deemed ambiguous. Moreover, because the magnetic field background level seems to cut through the middle of the oscillations in the second part of the interval, several promising structures were missed altogether.

Uncertainties on the MVA directions and magnetic field components were evaluated following the prescriptions of (Sonnerup & Scheible, 1998). Error estimates on the eigenvector directions did not exceed 15° during the period concerned whereas the mean error on the B -field magnitude along the maximum variance direction was less than 6 nT throughout. More-

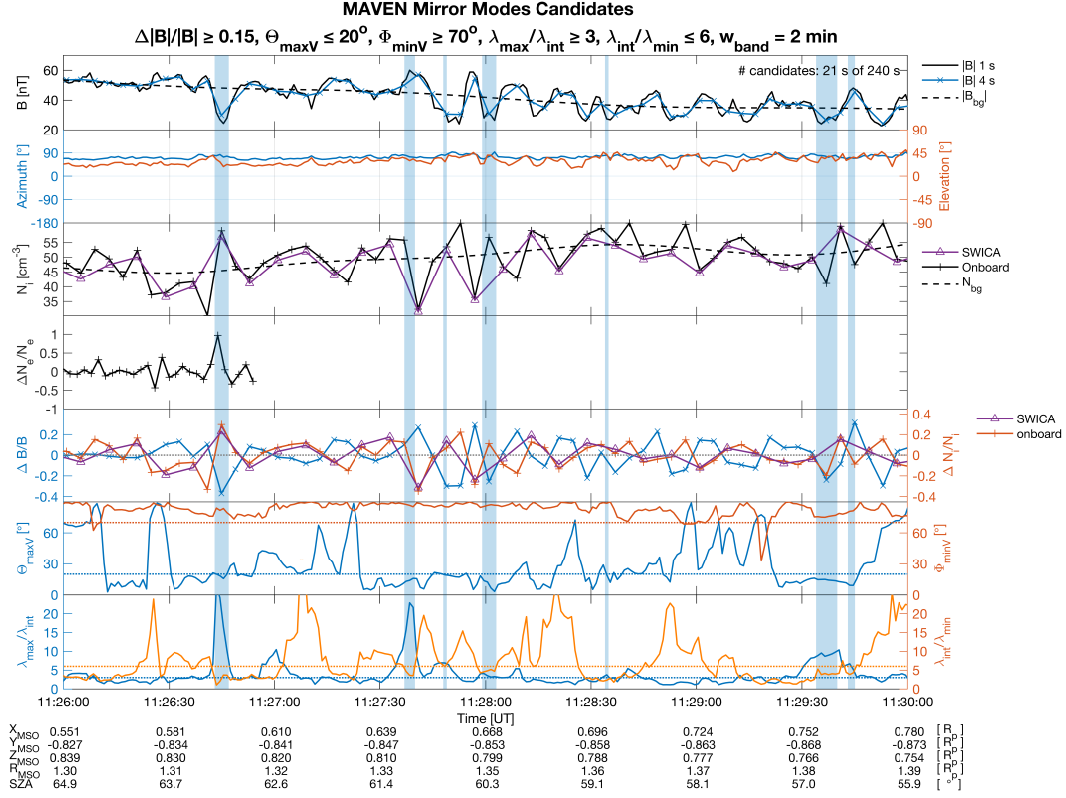


Figure 5. Mirror mode candidate structures seen with MAVEN on 25 December 2014. From top to bottom: B -field data measured by MAG, magnetic azimuth and elevation angles, ion density measured with SWIA (onboard and SWICA), superposed with the average ion density N_{bg} (low-pass Butterworth filter applied to SWICA densities), electron density fluctuations $\Delta N_e/N_e$ measured with SWEA (forward differences from integrated onboard energy spectra), magnetic field and ion density fluctuations $\Delta B/B_{\text{bg}}$ (left axis, blue) and $\Delta N_i/N_i$ (right axis, with onboard data in orange and SWICA data in purple), angles $\Theta_{\max V}$ and $\Phi_{\min V}$ between the background magnetic field and the MVA directions (maximum and minimum variance directions), eigenvalue ratios (maximum to intermediate, and intermediate to maximum). Horizontal dotted lines in the two last panels represent the thresholds corresponding to each parameter (colour-coded). High resolution magnetic field data is superposed in grey on the first panel, and the corresponding MVA angles and eigenvalue ratios from high-resolution B -field data are in semi-transparent thick lines in the two bottom panels. Vertical light blue areas mark the identified intervals with candidate mirror mode structures fulfilling the B -field-only criteria of Table 1. Coordinates (X_{MSO} , Y_{MSO} , Z_{MSO} , planetocentric distance R_{sc}), expressed in units of planetary radius R_p , as well as the solar zenith angle (SZA) are indicated for the relevant time stamps.

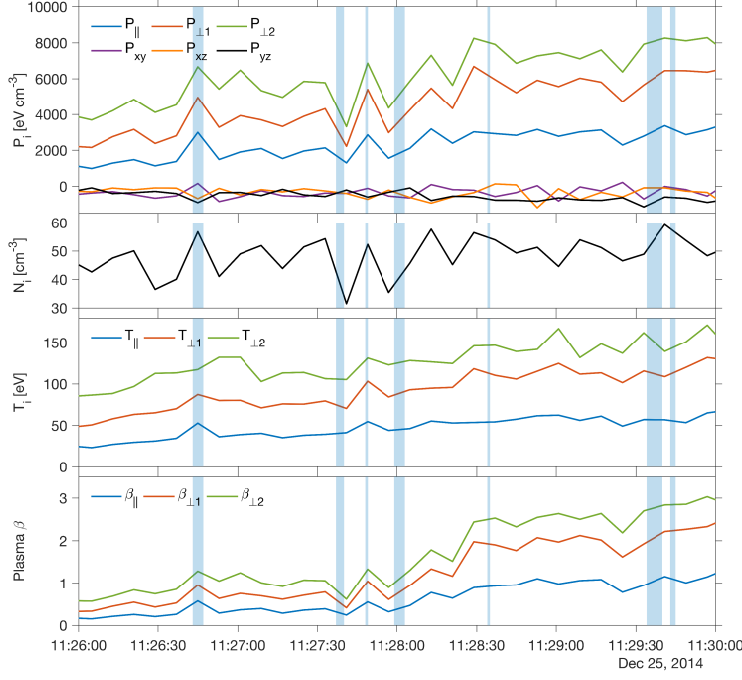


Figure 6. Retrieved moments of the ion distribution function, SWIA Coarse Archive mode and derived quantities necessary to calculate the MM instability criterion MMIC. From top to bottom: parallel and perpendicular pressures, ion density, parallel and perpendicular temperatures, parallel and perpendicular plasma- β . MM candidates detected with B -field-only criteria are highlighted as vertical light blue areas.

over, hodograms of the B -field variation in the MVA orthogonal planes (not shown) showed clear linearly polarised signatures. This is giving additional confidence on the validity of the detections performed. For a discussion of MVA and how it is applied to the detection of ULF waves, the reader is referred to the review of Volwerk (2006).

Let us now investigate further the points raised in Sect. 2.3, i.e., magnetic field direction and instability criterion MMIC. During the interval, the magnetic field azimuth and elevation angles do not change significantly with less than $\sim 15^\circ$ rotation, which is an expected characteristic of MMs (Price et al., 1986). The calculation of the parallel and perpendicular temperatures from the pressure tensor is performed as explained in Sect. 2.3 and Appendix B, with the MFA system based on \mathbf{B}_{bg} as defined in Appendix A. Results for P_{\parallel} , the two perpendicular directions $P_{\perp 1}$ and $P_{\perp 2}$, as well as corresponding temperatures and plasma- β_{\parallel} and β_{\perp} are shown in Fig. 6. The diagonalisation method yields off-diagonal components of the pressure tensor that are small in comparison to the diagonal elements, with larger fluctuations seen when entering the candidate MM structures, especially the one around 11:26:45 UT. Clear anisotropies in pressure (and hence temperatures, although their variations are in comparison somewhat dampened by the abrupt variations seen in the densities) are seen, with the two perpendicular components larger than the parallel component by a factor 2 or so. Because the magnetic field vector was in the blind sector of SWIA’s limited FOV, the parallel components in pressure, temperature and plasma- β are expected to be lower estimates, which would in turn mitigate the extent of the anisotropy.

Figure 7 shows the interplay between magnetic and ion pressures (parallel and perpendicular) (top left). Magnetic pressure $P_B = |B|^2/2\mu_0$ and ion pressures, especially the perpendicular pressure P_{\perp} , appear to be anticorrelated throughout the interval, at the resolution of SWIA. This is in agreement with results at comets (Mazelle, 1990; Mazelle et al., 1991).

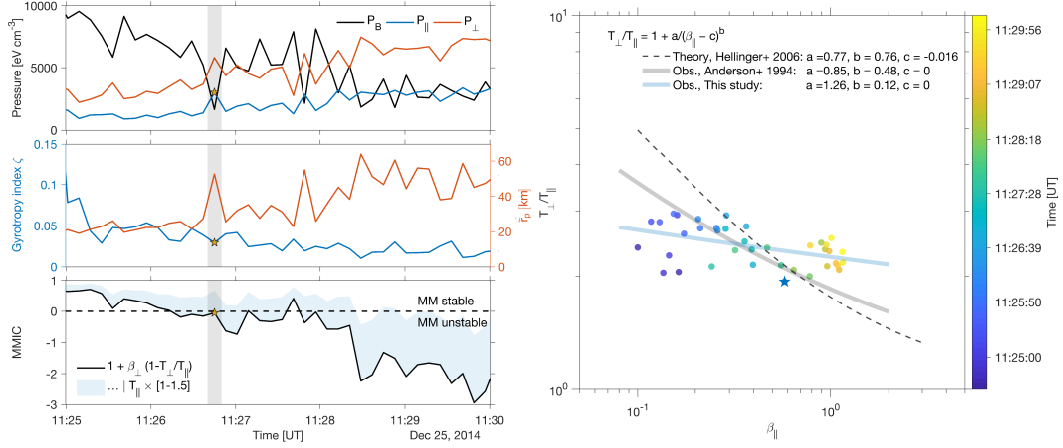


Figure 7. Parallel and perpendicular ion pressures P_{\parallel} and P_{\perp} (8 s resolution) and magnetic pressure P_B at 1 s (top left), agyrotropy index ζ (see Eq. B8) and equivalent spatial scale commensurable to a fluid-like proton gyroradius $\tilde{r}_p = m_p V_{\perp}/q|B|$ (middle left), mirror mode instability criterion (bottom left) and T_{\perp}/T_{\parallel} as a function of plasma β_{\parallel} . Because of the difficulty in estimating the two perpendicular directions, the maximum eigenvalue is retained in these calculations so that $T_{\perp} = \max_j(T_{\perp j})$. The grey-shaded zone on the left highlights the times when the clearest MM structure is detected throughout the interval: a star marks the position of the middle of the zone at the resolution of SWIA. An inverse regression in $T_{\perp}/T_{\parallel} = 1 + a/(\beta_{\parallel} - c)^b$ is given as a comparison to previous works, theoretical (Hellinger et al., 2006) or observational (Anderson et al., 1994).

In order to give a measure of the non-gyrotropy of the pressure tensor, the quantity ζ (Eq. B8, Appendix B), which we refer to as “agyrotropy index” based on the off-diagonal elements of the pressure tensor following Swisdak (2016), is shown in the middle panel (left). Any value of $\zeta \neq 0$ is a departure from the normal distribution (for which $\zeta = 0$), which is observed here throughout the interval, with $\zeta = 0.05 - 0.12$ (mild departure from perfect gyrotropy). Early in the interval, the agyrotropy is much larger: this can be ascribed to the presence, confirmed by a cursory look at the mass spectra from STATIC (see also Fig. 2), of heavy pickup ions, which are essentially unmagnetised early in their trajectory. It is interesting to notice that when entering the most prominent MM dip structure around 11:26:45 UT, ζ decreases together with the magnetic field intensity; consequently, agyrotropy index and perpendicular pressures appear also anticorrelated, as can be seen later in the interval. This means that in a MM structure, the off-diagonal elements of the pressure tensor tend to diminish with respect to the diagonal (parallel and perpendicular) elements. How does that compare with spatial scales probed by MAVEN throughout the interval? One way of evaluating this aspect is to define a quantity commensurable with a “fluid-like” gyroradius for core-distribution protons, i.e., an equivalent spatial scale calculated as $\tilde{r}_p = m_p V_{\perp}/q|B|$, assuming most ions (the core ions) have a perpendicular velocity equal to V_{\perp} , the perpendicular bulk plasma velocity. In this way, \tilde{r}_p would be a rough estimate of the mean ion gyroradius for ions populating the maximum of the non-Maxwellian ion distribution function. The decrease in agyrotropy index ζ coincides thus with \tilde{r}_p increasing by almost a factor 2 in mirror mode ‘dip’ structures, because of a corresponding decrease of the magnetic field intensity. One tentative interpretation in a kinetic sense could be that ions with larger gyroradii (and potentially seeping into the mirror loss cone of the ‘magnetic bottle’) escape, eventually tending towards a more gyrotropic distribution. This effect could become especially important for smaller MMs or MHs. We note also that \tilde{r}_p and the local thermal proton gyroradius, determined from $T_{\perp} = P_{\perp}/N_i$, have very similar values during the interval considered.

The MM instability criterion MMIC is shown in Fig. 7, bottom left panel. The region crossed by the spacecraft and containing the train of MMs is interpreted as being marginally unstable to the generation of MM structures, with MMIC moving from positive values before 11:26 UT ($0 \leq \text{MMIC} < 1$) to negative values afterwards. Significantly negative values ($\text{MMIC} \leq -1$) start to occur starting 11:28:30 UT and onwards, coinciding with the start of the quasi-periodic B -field signal. However, because of the likely overestimate of T_{\perp}/T_{\parallel} , the exact time where the MMIC may cross the threshold line $\text{MMIC} = 0$ is likely inaccurate. This is illustrated as a light blue region above the nominal level in black by applying an arbitrary increase of up to 50% of T_{\parallel} . This increase shifts the curve upwards towards the stability line at $\text{MMIC} \sim 0^-$, making the plasma reach marginal stability almost all the time during the interval. At 11:26:45 UT, in the middle of the most prominent MM structure found (vertical light grey area on the figure), the derived MMIC remains very stable and close to the threshold. Combined with predominantly MM-unstable conditions at play for times after around 11:29 UT, this would imply that the region crossed by MAVEN at that time is not the source region of these MMs and should be found upstream of the spacecraft. Owing to their duration (around 10 s, i.e., of the order of 1000 km in size for a lower-estimate plasma velocity of 100 km/s) and possibly advanced development stage (mixed presence of dips and peaks), this source region may be up to several hundreds of kilometres upstream, and not necessarily in the path of the spacecraft.

On the right of Fig. 7, the temperature anisotropy T_{\perp}/T_{\parallel} is shown as a function of proton plasma- β_{\parallel} and time (colour code), with a Levenberg-Marquardt fit of the form:

$$T_{\perp}/T_{\parallel} = 1 + \frac{a}{(\beta_{\parallel} - c)^b}, \quad (5)$$

as in Fuselier et al. (1994) and Hellinger et al. (2006) to investigate the marginal stability condition with respect to MM and ion cyclotron instabilities. The modified MMIC criterion translates to [$a = 0.77$, $b = 0.76$, $c = 0.016$] (Hellinger et al., 2006), with any point on the right of that line denoting MM-unstable conditions. In the interval of study, $a = 1.26$ and $b = 0.12$ with $c = 0$, which is in contrast with previous studies at Earth of the proton anisotropy: Anderson et al. (1994) obtained values $a = 0.85$ and $b = 0.48$ whereas Génot, Budnik, Hellinger, et al. (2009) found $a = 0.47$ and $b = 0.56$ ($c = 0$ in both cases). A flatter inverse correlation with β_{\perp} ($a = 1.41$, $b = 0.09$, not shown) was found in the study interval. This in turn is closer to the values found by Fuselier et al. (1994) ($a = 1.40$, $b = 0.26$) for He^{2+} ions, also in the Earth's magnetosheath. Such differences are not surprising since (i) our present analysis does not discriminate between protons and other ions (including alpha particles) in the ion distributions, and (ii) parallel temperatures are likely underestimated because of the FOV of SWIA. Moreover, we limit ourselves here to one event spanning a few minutes only. A statistical study of the temperature anisotropy behaviour with respect to the plasma- β , using the full MAVEN dataset, is left for another study.

4 Discussion

Although magnetic field signatures in the magnetosheath of Mars were previously found consistent with the probable presence of MM waves (Bertucci et al., 2004; Espley et al., 2004), no dedicated study has been possible until the advent of MAVEN and its full magnetic field and plasma suite of instruments. Consequently, we present here the first *unambiguous* detection of MMs in the Martian environment.

After the in-depth analysis presented in Sect. 3.2, reanalysis of the current interval is now possible on the basis of the plasma measurements and the high confidence level in the density variations. We first selected manually the location and temporal width of MM structures in the interval by comparing the $|B|$ -field variations with the onboard moment and SWICA density variations. The temporal width was evaluated by remarking that the first crossing between the background magnetic field level on either side of the detection constitutes the start and end points of the structure. It is clear that each event has a different scale in the parallel and perpendicular directions, as remarked by Zhang et al. (2008): this is seen in Fig. 8 (top left panel)

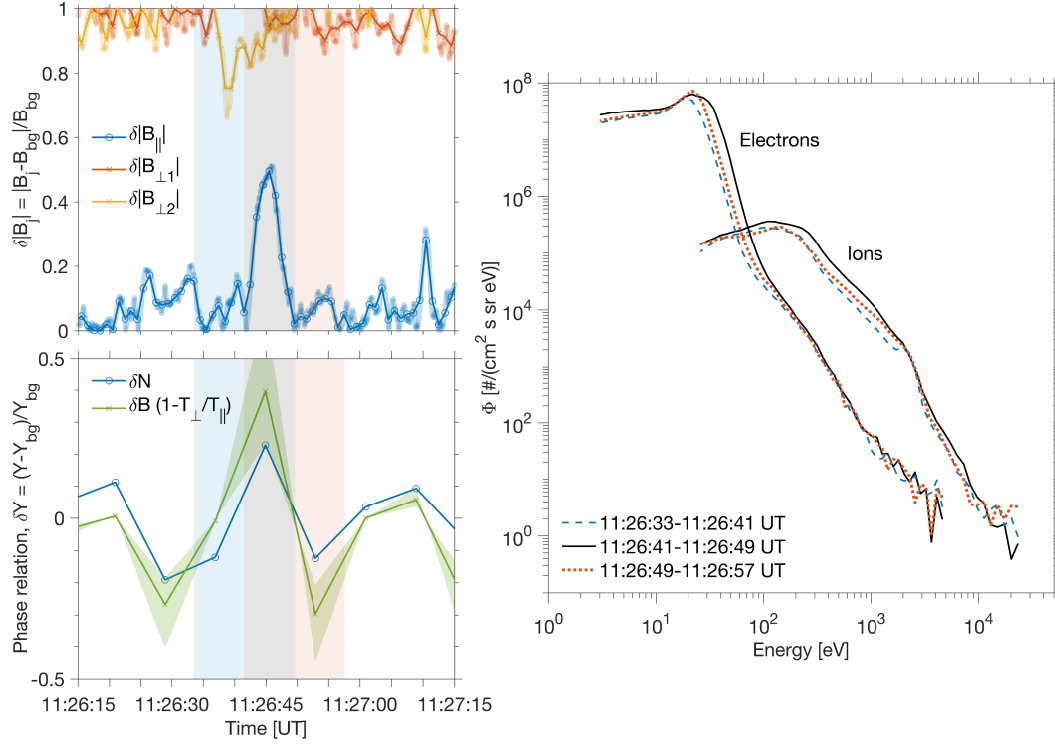


Figure 8. Clearest MM structure detected around 11:26:45 UT and lasting almost 9 s. Left, top: normalised parallel and perpendicular components of the magnetic field fluctuations $\delta|B_j| = |B_j - B_{bg}|/B_{bg}$ at 1 Hz (solid lines) and 32 Hz (thicker semi-transparent lines), with $j = (\parallel, \perp 1, \perp 2)$ directions. The dashed line at $y = 1$ corresponds to the background field level. Left, bottom: phase relation where the two sides of Eq. (6) are compared. Normalised fluctuations $\delta N = (N - N_{bg})/N_{bg}$ for ions (SWIA density measurements) and $\delta B(1 - T_{\perp}/T_{\parallel})$ (with $\delta B = (B - B_{bg})/B_{bg}$) were calculated using a low-pass Butterworth filter to estimate the background contributions N_{bg} and B_{bg} . The light green-shaded region illustrates an increase in T_{\parallel} of up to 50% to evaluate how sensitive an underestimation of T_{\parallel} could be. Right: Particle differential electron and ion fluxes inside and outside the MM structure. Black lines correspond to the mean fluxes inside of the structure (grey zone on left panels) whereas the blue and red lines correspond to mean fluxes 8 s (= resolution of SWICA) outside of the structure (light blue and red zones on left panels). Notice that the zones do not start exactly at a full second since the original temporal width of the MM was determined by an interpolation of the 1-Hz magnetic field data crossing the y -axis $y = 1$ in the top left panel.

for the clearest event around 11:26:45 UT, when comparing the parallel and cross-field magnetic fluctuation components normalised to the background field, $\delta B_{\parallel} = |B_{\parallel} - B_{bg}|/B_{bg}$ and δB_{\perp} .

For this particular event, one can specifically check for the species-by-species phase relationship between density and the magnetic perturbations, and applied here to the ions. It is approximately (in the hypothesis of a cold component of the plasma, in this case the cold photoelectrons) (Hasegawa, 1969; Mazelle et al., 1991):

$$\frac{\Delta N_i}{N_i} = \left(1 - \frac{T_{\perp}}{T_{\parallel}}\right) \frac{\Delta B}{B}. \quad (6)$$

Equation (6) formalises that for a temperature anisotropy in the perpendicular direction ($T_{\perp}/T_{\parallel} > 1$), the density is expected to be out of phase with the magnetic field. In Fig. 8 (bottom left),

we show the comparison between the left-hand side and the right-hand side of the equation, with $\delta N_i = \Delta N_i / N_i$. In order to evaluate the uncertainty in the parallel temperature (derived from SWIA's limited field of view), the shaded green region denotes a 50% variation of T_{\parallel} ($1 - 1.5 \times T_{\parallel}$). Although the δB term has larger variations in the time span considered, the agreement, both in shapes and amplitudes of variations, is striking: it quantitatively confirms the anticorrelation between density and magnetic field fluctuations and the ion density. Similarly, Mazelle et al. (1991) found that Eq. (6) was also accurate for the low-frequency MM-like signatures found at comet 1P/Halley.

To try to characterise further the particle content of the MM, the mean electron and ion omnidirectional fluxes measured by SWEA and SWIA are shown in Fig. 8 (right panel) where mean fluxes were derived successively inside and outside the structure (see for details in the caption). As already remarked from Fig. 4, the inside of the MM structure corresponds to a distinct increase in both peak energy and flux with respect to the outside, both for electrons and for ions. Interestingly, the fluxes on either side of the MM are similar, suggesting that the surrounding plasma may well have very similar characteristics. This paints the picture of a magnetic bottle containing a relatively energetic and dense ion population, and drifting with the surrounding cooler and diluted plasma.

Reanalysis of the MM structures present in the 11:26-11:30 UT interval proceeded as follows. We first manually picked 9 “dip” MMs for simplicity, assuming that their peak counterparts are part of the same structure. Their average width was 8.7 ± 2.1 s, with an average dip-to-dip period of ~ 9.3 s. Four structures lasted up to 10 s whereas the shortest around 11:28:28 UT lasted only about 5 s. Assuming a plasma bulk speed of about 150 km/s (mostly in the perpendicular direction to the magnetic field as shown by SWIA), and that the spacecraft is at rest with respect to the plasma, the size of the MM structures vary between 750 and 1500 km (a large fraction of the planetary radius, $0.22-0.44 R_p$), which is much larger than the equivalent spatial scale of the peak-distribution ions in this region ($\tilde{r}_p \sim 35$ km, i.e., MM sizes of the order of $\sim 20-40 \tilde{r}_p$, see Fig. 7, middle left panel). By comparison, the thermal proton gyroradius, noted $r_p = \sqrt{2k_b T_{\perp} / m_p / q |B|}$, in the possible source regions, either in the solar wind or in the immediate wake of the quasi-perpendicular shock, can be estimated. In the solar wind upstream of the shock, around 11:45 UT, the perpendicular proton temperature was 6.5×10^4 K (i.e., $T_{\perp} = P_{\perp} / N_i \sim 5.6$ eV as measured on average from the SWIFA mode – a textbook value, see Slavin and Holzer (1981)) and the upstream B -field magnitude was ~ 6.6 nT. This corresponds to a solar wind proton thermal gyroradius r_p^{sw} of the order of 50 km ($\sim 0.015 R_p$), implying that MM sizes varied from ~ 15 to $30 r_p^{\text{sw}}$ throughout this interval. Such an estimate, albeit significantly smaller, is in line with similar considerations at Venus made by Zhang et al. (2008), who deduced MHs to have sizes of $40-100 r_p$ in the shape of a prolate spheroid. Similarly, just behind the shock around 11:37 UT where the magnetic field intensity is lower than at the location of the MMs, $T_{\perp} \sim 150$ eV, and $|B| \sim 24$ nT, resulting in a magnetosheath thermal gyroradius $r_p^{\text{ms}} \sim 75$ km, i.e., the observed MMs deeper in the sheath have scales $\sim 10-20 r_{p,\text{ms}}$. The typical sizes given here are in agreement with previous studies (see Table 2 of Tsurutani, Lakhina, et al. (2011)).

Manually picking the location and duration of MMs in our interval resulted in the statistics shown in Fig. 9, with 9 structures totalling 78 s, from which a revised set of B -field only criteria was extracted. Criteria were on average relaxed ($\Delta|B|/|B_{\text{bg}}|$, λ_{max} and λ_{min} , Θ_{maxV}) to better take into account the characteristics of the detected MMs. To detect as many MMs as possible and avoid false positive detections, we decided to keep within 1σ of the mean of the PDFs shown in Fig. 9, depending on the spread in values within the range. The revised detections are highlighted in orange, whereas the detections using the initial criteria are in light blue; common periods are in grey. The revised set of criteria is given in Table 1, yielding 7 ‘dip’ structures and 3 ‘peak’ structures, with 1 potential outlier, totalling 33 s out of a 240-s interval. Some of these peak structures appear to be nothing more than counterparts of dip structures, depending on the choice of the background field. Their location with respect to detrended

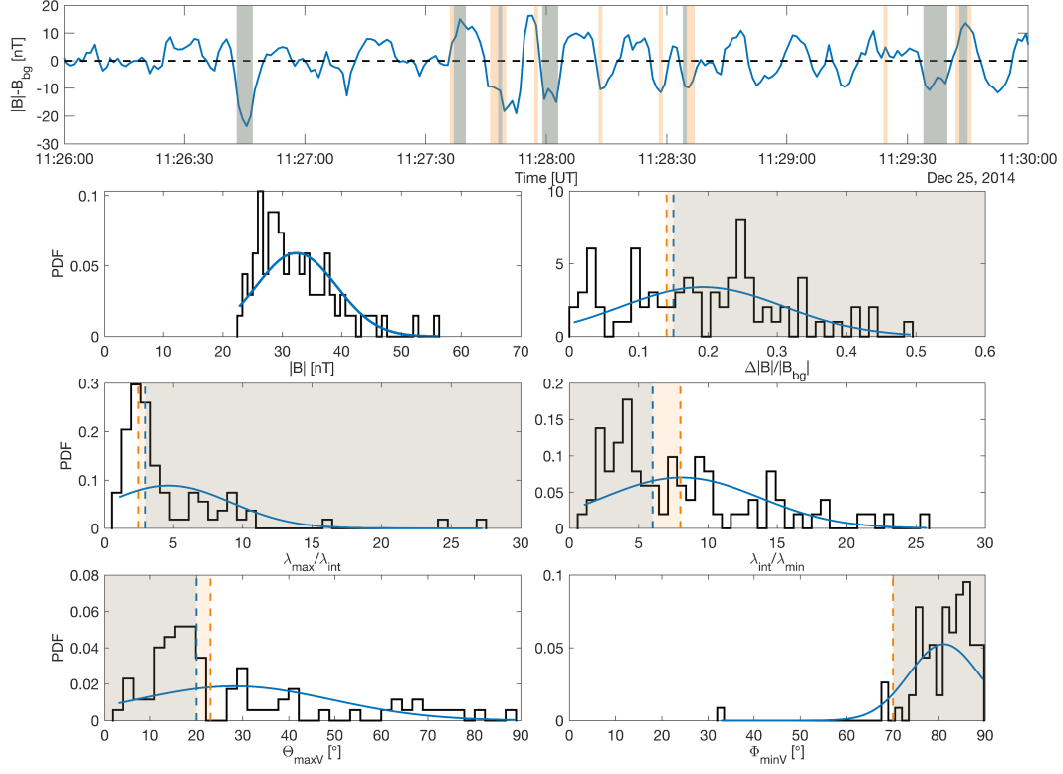


Figure 9. Probability density function (PDF) of 9 manually picked mirror modes during the interval 11:26-11:30 UT. These structures lasted in total 78 s in this 240 s interval. Top: detrended total magnetic and detection of MMs. Then, from left to right, top to bottom: magnetic field intensities, fluctuations $\Delta|B|/|B_{bg}|$, eigenvalue ratio $\lambda_{\max}/\lambda_{\text{int}}$ and $\lambda_{\text{int}}/\lambda_{\min}$, angles between background field and maximum (respectively, minimum) variance $\Theta_{\max V}$ ($\Phi_{\min V}$) directions. Initially retained ranges from Table 1 are highlighted in transparent blue, whereas the revised criteria, determined from the PDFs within 1σ of the mean, yield the ranges in orange. Normal distribution fits are shown as blue lines. Out of 240 points in the interval, the total number of revised measurement points was 33 (initial criteria: 21 points), thus equal to a total residence time in a MM structure of 33 s.

B-field values, where MM structures have typical peak-to-peak amplitudes of 20–35 nT, are also emphasised as areas in light orange on the figure.

Robust detections across an entire orbit may be difficult as small adjustments in angles and eigenvalue ratios can change the results, increasing or decreasing the number of potential candidates. The difficulty lies in the aforementioned mixed presence of peaks and dips in the study interval considered. Automatic detection applied to larger datasets may in this way benefit from considering smaller intervals of a few minutes on which to calculate the background field levels, depending on the skewness of the *B*-field distribution in that interval (Génot, Budnik, Hellinger, et al., 2009; Ala-Lahti et al., 2018).

Finally, we look into the magnetic field power spectral density (PSD) estimates of the compressional, right-handed and left-handed components, computed with Welch’s algorithm and a 50% Hamming window overlap (Welch, 1967). This is shown in Fig. 10, with the mean MM period of 9.3 s (0.017 Hz) appearing to almost coincide with a series of larger peaks in the compressional PSD, with the two circular polarisations being muted in comparison. During the interval considered, the mean proton gyrofrequency \bar{f}_p was equal to 0.64 Hz: above this limit, sub-ion scales start. Two main trends in the overall PSDs can be seen, with a Kolmogorov-

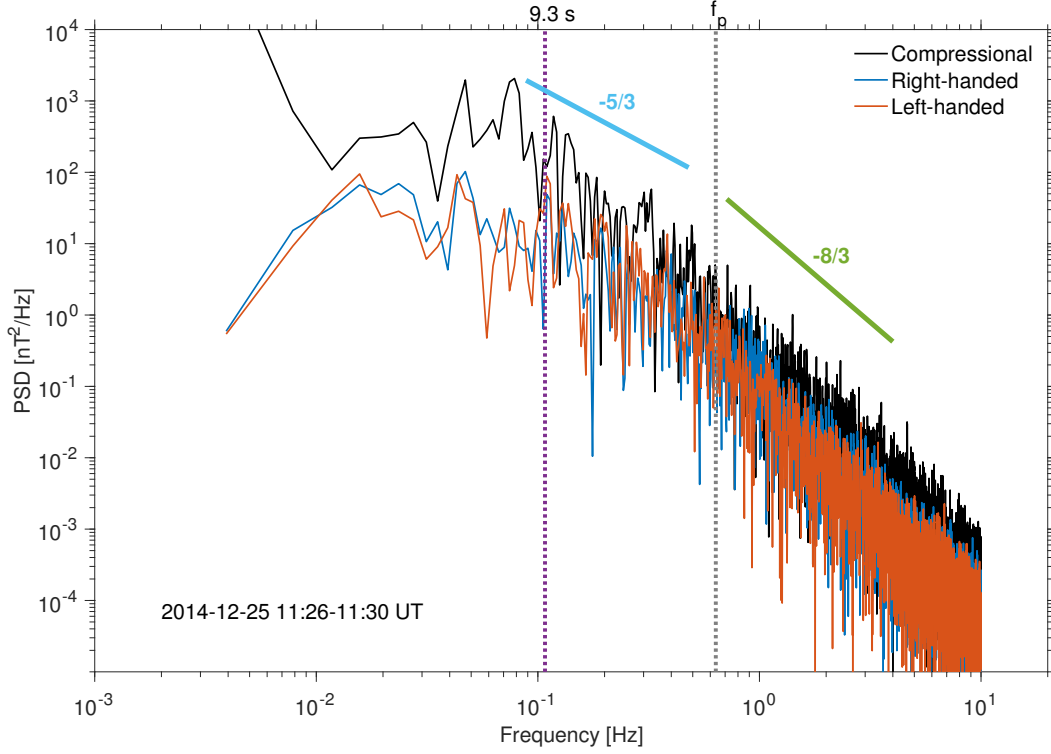


Figure 10. Welch-estimated power spectral densities (PSD) for the magnetic compressional, right-handed and left-handed polarisations, using the 32 Hz magnetic field data, on 25 Dec. 2014 11:26-11:30 UT. The vertical line indicates the approximate period of 9.3 s ($f_{\text{mm}} \sim 0.017$ Hz) found for MM ‘dip’ structures with the revised B -field only criteria. Tendencies towards Kolmogorov-like turbulence (spectral index $-5/3$) and steepened spectra at the sub-ion scales ($-8/3$) are shown for comparison. The mean proton gyrofrequency for the interval, $\bar{f}_p = q|\mathbf{B}|/2\pi m_p = 0.64$ Hz is indicated.

type turbulence (spectral index $-5/3$) steepening above the proton gyrofrequency (spectral index $-8/3$). The mean period of the MMs lies thus in the Kolmogorov-like region of the spectrum, as expected from studies of the low-frequency wave turbulence in the Earth’s magnetosheath (Sahraoui et al., 2003, 2004) or from simulations (Hellinger et al., 2017).

Where do these structures originate? The question of the origin and development of MM structures around an unmagnetised object such as Mars, Venus or around comets is of particular interest to the space physics community as MMs contribute to the heating of the surrounding plasma. The source of the temperature or pressure anisotropy needed to trigger MMs can be twofold: (i) it may come from the intrinsic properties of the plasma in the wake of the quasi-perpendicular shock which heats and deflects the solar wind (Bale et al., 2005; Peng et al., 2015) or (ii) from the pickup ion process several proton gyroradii in the upstream solar wind (Bader et al., 2019). The first mechanism is the classical one mostly at play at magnetised planets such as the Earth or Jupiter and implies hence a relatively *local* MM generation in the magnetosheath. The second mechanism, the pickup process, creates ring/ring-beam ion velocity distributions which in a high- β plasma are unstable to the generation of MMs and can drive their growth in the upstream solar wind (Price et al., 1986). Such MM-like structures in the solar wind, called MHs or magnetic depressions, have been detected upstream of Mars (Madanian et al., 2020) and at comets (Volwerk et al., 2014). This mechanism may become prominent when the bow shock is either quasi-parallel, i.e., less conducting to the rise of anisotropies and more permeable to wave transmission, or weak (for example at comets, and in a lesser measure, at Mars);

it may then constitute an important *remote* source of MMs. Indeed, if the source of the anisotropy is upstream of the shock, MM waves found downstream of the shock but originating upstream of it may consequently have been transported over large distances, almost unchanged, through the quasi-parallel shock. In this latter scenario, if we recall that MH structures in the solar wind are somewhat larger than the MMs observed in the sheath, a damping or attenuation process could be at play when crossing the shock into the magnetosheath, with the trapped particles within the magnetic bottles losing energy. This scenario is reminiscent of the one found by Plaschke et al. (2018) at comet 67P/Churyumov-Gerasimenko for low outgassing rates (and at about the time a nascent bow shock was expected to take place), with relatively smaller MH structures deep in the coma found to be the end result of upstream larger MHs.

In our case however, and although contributions from pickup ions cannot be ruled out entirely, the first mechanism (source in the wake of the quasi-perpendicular shock) seems the likeliest. First, as we approach closer and closer to the quasi-perpendicular bow shock, the plasma becomes more and more unstable to the generation of MMs. Second, a cursory examination of the ion velocity distribution functions measured by SWIA during the interval (not shown) reveals a non-Maxwellian (or rather non-bi-Maxwellian) behaviour, with free energy available for light particles, such as protons, to drive the growth of instabilities. This could favour in turn the growth of the MM instability over that of the proton cyclotron instability (Price et al., 1986), in keeping with the observations of Russell et al. (1987) at comet 1P/Halley. Third, the train of MMs found here shows a variety in shape (dips and peaks), duration and size that point towards different stages in their evolution. Finally, no magnetic holes were found immediately upstream of the shock, at least in the path of the spacecraft. All four points are consistent with the scenario of a source region for these MMs situated in the bow shock's immediate wake.

5 Conclusions

We showed for the first time the unambiguous presence of a train of linear MMs in the magnetosheath of Mars, as confirmed by magnetic field and plasma measurements taken from MAVEN, in the early part of the mission. Their characteristics have a textbook flair to them: with wave frequencies below the local proton gyrofrequency and lasting approximately 5 to 10 s (as previously found at Venus by (Volwerk, Richter, et al., 2016)), these magnetic islands follow a clear $B - N_i$ and $B - N_e$ anticorrelation. Trapping distinctly denser and more energetic ions on the inside, they appear to float with a surrounding plasma relatively less energetic and more diluted in comparison.

These MMs are situated on the dayside in the wake of a highly quasi-perpendicular shock, deep in the magnetosheath ($R_{sc} \sim 1.35 R_p$, solar zenith angle $SZA \sim 60^\circ$) and close to the transition into the MPB: this is precisely this region where Ruhunusiri et al. (2015) statistically found waves matching MM characteristics. Because of the nature of the shock, magnetic holes created upstream in the solar wind may not easily cross the quasi-perpendicular barrier, which implies a more local generation mechanism behind the bow shock. Moreover, the magnetic field and plasma signatures of these MMs seem to be in constant evolution: they vary in size (from a few hundreds of kilometres to a few thousands of kilometres) and in peak-to-peak amplitude (from ≈ 20 to 35 nT with respect to the background field), possibly implying that these structures are in various stages of evolution. There is also indication that the MMs transit from peaks to dips in a region where the plasma is marginally stable to MM generation. This could imply in turn that the generator region of these particular MMs, if assumed to be immediately downstream of the shock region, was never probed by the MAVEN spacecraft. Finally, although the quasi-perpendicular shock and its turbulent wake may be the main source of the free energy in the plasma, our results do not exclude the possibility of MHs forming in the upstream solar wind and being transported through the quasi-perpendicular bow shock into the magnetosheath. However, such a crossing would in practice be difficult and raise questions as to the energy/momentum transfer and wave mode conversion through the shock. Using the criteria developed in the present work, a statistical study of the location of MMs in

Mars' magnetosheath is currently under way and should shed some more light on the place(s) of origin of mirror mode structures and under what conditions they predominantly appear.

Appendix A Magnetic Field-Aligned coordinate system

The Magnetic Field-Aligned system (MFA) can be determined by first calculating the ambient magnetic field direction $\mathbf{B}_{\text{ambient}}$. In the case of an ion instrument such as MAVEN/SWIA, which takes a finite time in order to scan through angles and energies, one way of estimating $\mathbf{B}_{\text{ambient}}$ is to calculate the average magnetic field $\langle \mathbf{B} \rangle$ during a full measurement scan of SWIA. In the SWICA mode during the time interval chosen in this study (11:25-11:30 UT on 2014-12-25), one measurement takes for instance about $\Delta t = 8$ s. Another way of estimating $\mathbf{B}_{\text{ambient}}$ is to calculate the so-called background field \mathbf{B}_{bg} from a low-pass filtering of \mathbf{B} as in Sect. 2.2.

Assuming the latter for now, the matrix of passage \mathbf{M}_{MFA} between MSO coordinates (base $\{\hat{\mathbf{X}}, \hat{\mathbf{Y}}, \hat{\mathbf{Z}}\}$) and MFA coordinates (base $\{\hat{\mathbf{X}}', \hat{\mathbf{Y}}', \hat{\mathbf{Z}}'\}$) is usually chosen so that the third axis in the MFA system is aligned with the background \mathbf{B} -field direction, i.e., $\hat{\mathbf{Z}}' = \mathbf{B}_{\text{bg}}/|\mathbf{B}_{\text{bg}}|$. Because in three dimensions, there is an infinite number of perpendicular vectors to a given vector, the perpendicular directions are arbitrary: a choice with respect to one perpendicular axis must be made to complete the right-hand rule. One possibility used in the literature is to assume that the $\hat{\mathbf{Y}}'$ is perpendicular to the position vector \mathbf{R} of the spacecraft (Laakso et al., 2010) so that $\hat{\mathbf{Y}}' = \mathbf{R} \times \hat{\mathbf{Z}}'$. An common choice outside of Earth studies chooses a plane containing the $\hat{\mathbf{Z}}'$ direction and performs a counterclockwise rotation of 90° of $\hat{\mathbf{Z}}'$ so that the rotation matrix between MSO and MFA frames becomes:

$$\mathbf{M}_{\text{MFA}} = \{\hat{\mathbf{X}}', \hat{\mathbf{Y}}', \hat{\mathbf{Z}}'\} = \begin{pmatrix} 0 & \hat{\mathbf{Z}}' \times \hat{\mathbf{X}}'|_X & \hat{\mathbf{Z}}'_X \\ \frac{\hat{\mathbf{Z}}'_Z}{\sqrt{\hat{\mathbf{Z}}_Y'^2 + \hat{\mathbf{Z}}_Z'^2}} & \hat{\mathbf{Z}}' \times \hat{\mathbf{X}}'|_Y & \hat{\mathbf{Z}}'_Y \\ -\frac{\hat{\mathbf{Z}}'_Y}{\sqrt{\hat{\mathbf{Z}}_Y'^2 + \hat{\mathbf{Z}}_Z'^2}} & \hat{\mathbf{Z}}' \times \hat{\mathbf{X}}'|_Z & \hat{\mathbf{Z}}'_Z \end{pmatrix}. \quad (\text{A1})$$

This is the convention adopted in the present study. By construction, \mathbf{M}_{MFA} is orthogonal, so that the transpose of the matrix is its inverse, i.e., $\mathbf{M}_{\text{MFA}}^T = \mathbf{M}_{\text{MFA}}^{-1}$, and its determinant obeys $\det(\mathbf{M}_{\text{MFA}}) = 1$.

The instantaneous magnetic field vector in MFA coordinates is simply:

$$\mathbf{B}_{\text{MFA}} = \mathbf{M}_{\text{MFA}}^T \mathbf{B}_{\text{MSO}}, \quad (\text{A2})$$

for column vectors. In the convention above, B_{\parallel} is thus along the z direction and contains most of the signal, whereas the perpendicular directions oscillate closely around zero.

Tests (not shown) were performed in the interval 11:26-11:30 UT on 2014-12-25 to determine the rotation matrix \mathbf{M}_{MFA} using as ambient field either the ± 4 s averaged \mathbf{B} -field over the SWICA measurement time $\langle \mathbf{B} \rangle$ (which can be argued to be more physical with respect to the ion measurements), or the low-pass filtered field \mathbf{B}_{bg} (used in the B -field only approach, a measure of the macroscopic ambient field over a 2-min span). Both methods yielded very similar results for matrix \mathbf{M}_{MFA} in terms of directions and magnitudes. The perpendicular residuals in \mathbf{B}_{MFA} after detrending the magnetic field showed variations of the order of ± 3 nT for a total signal of about 40 nT for each method. Consequently, calculations of parallel and perpendicular components of relevant physical quantities such as \mathbf{B}_{MFA} , $\bar{\mathbf{P}}_{\text{MFA}}$ (see Appendix B) or the mirror mode criterion MMIC of Eq. (1) were also similar, with only occasional spikes when using $\langle \mathbf{B} \rangle$ linked to the temporal resolution of SWIA (see Fig. B1). In the main study, the low-pass filtered background field, noted \mathbf{B}_{bg} , was used for simplicity and to keep consistent with the MM detection algorithm.

Appendix B Deriving parallel and perpendicular pressures

As explained in Sect. 2.3, the anisotropy in the plasma can be estimated by studying the behaviour of the ion pressure tensor in the Mean Field-Aligned (MFA) coordinate system. The pressure tensor $\bar{\bar{\mathbf{P}}}$ is a symmetric second-rank tensor with 9 elements of the form:

$$\bar{\bar{\mathbf{P}}} = \begin{pmatrix} P_{xx} & P_{xy} & P_{xz} \\ P_{xy} & P_{yy} & P_{yz} \\ P_{xz} & P_{yz} & P_{zz} \end{pmatrix}. \quad (\text{B1})$$

in any $\{\hat{x}, \hat{y}, \hat{z}\}$ normalised system of coordinates. It is good to recall also for later check-ups that, under any change of coordinate system, three main invariants \mathcal{I} exist for a tensor (Cayley-Hamilton's theorem). For a symmetric matrix, they reduce to:

$$\mathcal{I}_1 = \text{tr} \bar{\bar{\mathbf{P}}} = P_{xx} + P_{yy} + P_{zz} \quad (\text{B2})$$

$$\mathcal{I}_2 = \frac{1}{2} \left[\left(\text{tr} \bar{\bar{\mathbf{P}}} \right)^2 - \text{tr} \bar{\bar{\mathbf{P}}}^2 \right] = P_{xx}P_{yy} + P_{xx}P_{zz} + P_{yy}P_{zz} - (P_{xy}^2 + P_{xz}^2 + P_{yz}^2) \quad (\text{B3})$$

$$\mathcal{I}_3 = \det \bar{\bar{\mathbf{P}}} = P_{xx}P_{yy}P_{zz} + 2P_{xy}P_{xz}P_{yz} - (P_{yz}P_{xx} + P_{xz}P_{yy} + P_{xy}P_{zz}) \quad (\text{B4})$$

First the pressure tensor, originally expressed in the SWIA instrument coordinate system in eV cm^{-3} ($\bar{\bar{\mathbf{P}}}_{\text{swia}}$), is rotated into the MSO coordinate system using a rotation matrix from the appropriate SPICE kernel to yield $\bar{\bar{\mathbf{P}}}_{\text{MSO}}$. Ideally, in a coordinate system aligned with the mean magnetic field, off-diagonal terms will tend to be small with respect to diagonal terms. Notwithstanding the system of reference, and because the trace of a tensor is invariant with respect to coordinate transforms (rotations), the scalar pressure $p = P_{xx} + P_{yy} + P_{zz}$ remains constant. It follows from this simple statement that when diagonalising the 3×3 pressure tensor, the eigenvalues found will stay the same no matter which coordinate system is used.

To obtain the pressure components parallel and perpendicular to the background or average magnetic field, two methods are usually adopted, the first one based on the direct diagonalisation of the 3×3 tensor $\bar{\bar{\mathbf{P}}}$, the other relatively more involved with a rotation first into the MFA coordinate system and a diagonalisation of the remaining 2×2 tensor matrix.

B1 Method 1: direct 3×3 matrix diagonalisation

Because of its simplicity and that it can be performed without a supporting magnetometer, this method is usually the one used for onboard moment calculations. In any coordinate system in which the initial pressure tensor is expressed, the pressure tensor can always be diagonalised so that:

$$\begin{pmatrix} P_{\perp 1} & 0 & 0 \\ 0 & P_{\perp 2} & 0 \\ 0 & 0 & P_{\parallel} \end{pmatrix} = \mathbf{S}^{-1} \bar{\bar{\mathbf{P}}} \mathbf{S}, \quad (\text{B5})$$

with \mathbf{S} a singular matrix containing the right eigenvectors of the system, which give the directions of the principal axes of the diagonalised tensor in the chosen coordinate system. Here the parallel direction to the ambient magnetic field is assumed to be along the z direction, whereas the two other components, $P_{\perp 1}$ and $P_{\perp 2}$, are assumed to be identical in the gyrotropic assumption, by definition $P_{\perp 1} \sim P_{\perp 2} \sim P_{\perp}$.

In order to forego any assumption on the direction of the ambient magnetic field, one classic way to sort the eigenvalues found in Eq. (B5) is to isolate one that is most different from the two others. This component is by inference the parallel scalar pressure P_{\parallel} , whereas the two remaining components are assumed to be the perpendicular pressures. The total perpendicular pressure is then given by $P_{\perp} = \frac{1}{2} (P_{\perp 1} + P_{\perp 2})$.

The situation with negligible off-diagonal terms in the pressure tensor is mostly encountered in the textbook cases of a spherically symmetric distribution function or a gyrotropic one,

when the velocity distribution function is cylindrically symmetric about the mean field direction, here assumed along z (Paschmann et al., 1998). However, this situation occurs seldom in practice and determining the parallel and perpendicular pressures from this technique may yield false estimates, sometimes large.

B2 Method 2: alignment to MFA system and 2×2 matrix diagonalisation

When the magnetic field direction is known, this method is arguably more physical than method 1, since the pressure tensor is analysed directly in the MFA coordinate system itself instead of an arbitrary coordinate system (Swisdak, 2016). It thus requires the simultaneous knowledge of the magnetic field direction and amplitude. Calculations can be readily made in instrument coordinates (in which case the B -field is transformed into SWIA instrument coordinates) or in MSO coordinates (in which case the pressure tensor is first rotated into the MSO coordinate system). The latter is chosen to keep with the conventions of the main text.

Following the calculation of the matrix of passage from MSO to MFA coordinates (see Appendix A), the MSO pressure tensor can be rotated into MFA coordinates so that:

$$\bar{\mathbf{P}}_{\text{MFA}} = \mathbf{M}_{\text{MFA}}^T (\bar{\mathbf{P}}_{\text{MSO}} \mathbf{M}_{\text{MFA}}) = \begin{pmatrix} P'_{XX} & P'_{XY} & P'_{XZ} \\ P'_{XY} & P'_{YY} & P'_{YZ} \\ P'_{XZ} & P'_{YZ} & P'_{ZZ} \end{pmatrix} \quad (\text{B6})$$

is also a symmetric tensor.

By definition, $P'_{ZZ} = P_{\parallel}$, whereas P'_{XY} , P'_{YZ} and P'_{XZ} are non-zero off-diagonal elements indicative of shear stresses, i.e., the flow of momentum in the x (respectively, y) direction by motion of the plasma in the y (z) direction. Keeping the third column of the tensor aside, and since the determination of perpendicular directions is always arbitrary (see Appendix A), the two perpendicular directions are simply obtained by diagonalising the remaining 2×2 matrix (which is always diagonalisable, by construction):

$$\begin{pmatrix} P_{\perp 1} & 0 \\ 0 & P_{\perp 2} \end{pmatrix} = \mathbf{S}'^{-1} \begin{pmatrix} P'_{XX} & P'_{XY} \\ P'_{XY} & P'_{YY} \end{pmatrix} \mathbf{S}', \quad (\text{B7})$$

where \mathbf{S}' is a singular matrix containing the right eigenvectors of the system. By convention, the perpendicular component eigenvalues are sorted by increasing value.

Additionally, a measure of the agyrotropy, noted ζ , can be extracted from the off-diagonal elements, as in Swisdak (2016):

$$\zeta = \frac{P'^2_{XY} + P'^2_{XZ} + P'^2_{YZ}}{P_{\perp}^2 + 2P_{\parallel}P_{\perp}} = 1 - \frac{4\mathcal{I}_2}{(\mathcal{I}_1 - P_{\parallel})(\mathcal{I}_1 + 3P_{\parallel})} \quad (\text{B8})$$

ζ varies between 0 (gyrotropic tensor) and 1 (maximum departure from gyrotropy).

B3 Comparison of methods

A comparison of the two methods is presented in Fig. B1, with method 1 (direct diagonalisation) shown in the panels 2 – 5 as a blue line, whereas method 2's results are given in orange (and, for comparison, yellow, when using SWIA's mode scanning resolution of 8 s). Although local differences are clearly seen, the two methods agree rather well on average. At the time when a clear MM structure is detected (grey zone), $P_{\perp} \sim 2.5P_{\parallel}$ for both methods. However, at the beginning of the interval, method 1 exhibits abrupt variations of a factor 3–4 over a time scale comparable with the SWICA scanning temporal resolution (~ 8 s): this is highly suspicious and linked to the rather arbitrary sorting of the eigenvalues, with the two closest eigenvalues assumed to be the two perpendicular components, in keeping with the gyrotropic assumption. Method 2, on the contrary, provides a more gradual and smoother evolution of the pressures, both parallel and perpendicular, as well as the temperature ratios. This appears more consistent with the measurements themselves and the physics at play. Except

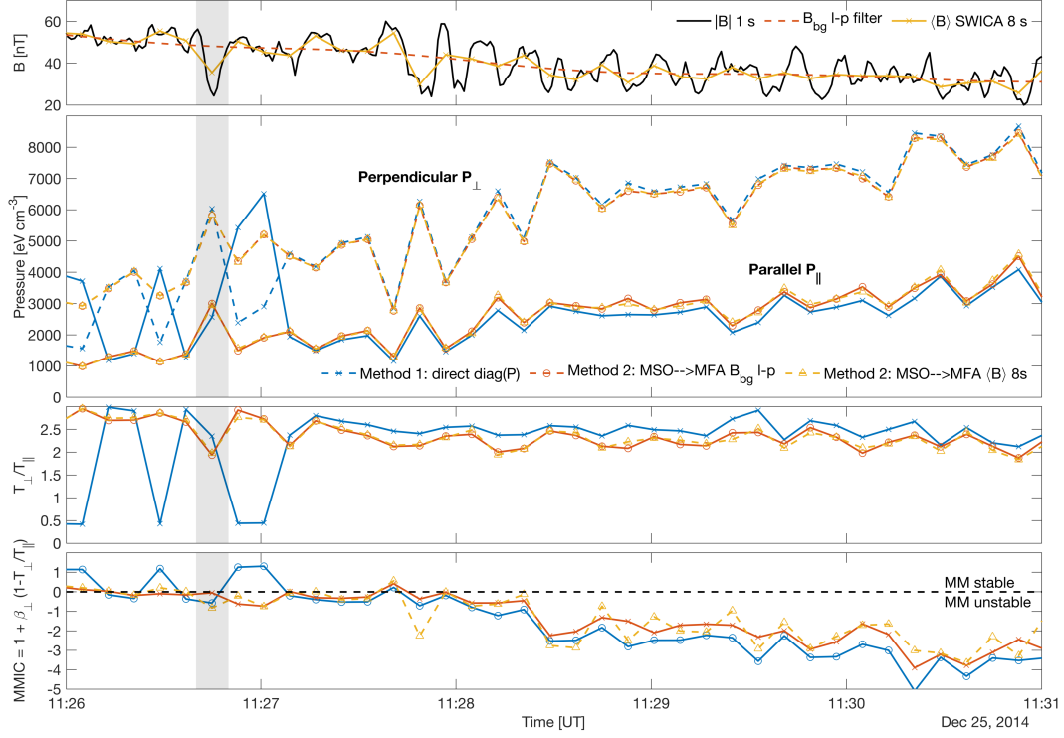


Figure B1. Top: magnetic field $|B|$ from MAVEN/MAG at 1 s resolution, low-pass-Butterworth filtered field B_{bg} as in Sect. 2.2, and average field $\langle B \rangle$ over SWICA's mode resolution (8 s, centered), during the interval 11:26-11:30 UT on 2014-12-25. Second panel: parallel P_{\parallel} (continuous lines) and total perpendicular ion pressures (dashed line) $P_{\perp} = \frac{1}{2} (P_{\perp 1} + P_{\perp 2})$, as retrieved from MAVEN/SWIA (SWICA mode). Third panel: temperature (or pressure) anisotropy. Last panel: mirror mode instability criterion (MMIC), with the zero line separating MM-unstable and MM-stable conditions. Throughout panels 2 to 4, method 1 (direct diagonalisation) is in blue whereas method 2 is in orange and yellow (tensor expressed in MFA, using either B_{bg} or $\langle B \rangle$, respectively, to estimate the ambient B -field direction). The grey-shaded zone represents the clearest MM structure in this interval as detected by a combination of plasma and magnetic field measurements.

from a few less gradual point-to-point variations, a similar conclusion can be made when using method 2 and estimating the ambient field direction from the mean field $\langle \mathbf{B} \rangle$ over the measurement time of SWIA (yellow) instead of using the macroscopic low-pass filtered \mathbf{B}_{bg} .

Because of the arbitrary way the parallel component is chosen in the diagonalised pressure tensor in method 1, only method 2 should be safely used in this particular case especially at the beginning of the interval, which has repercussions on any other quantities derived from the ion pressure tensor: T_{\parallel} and T_{\perp} , plasma- β_{\parallel} and β_{\perp} . Ultimately, this may alter the interpretation of the MMIC of Eq. (1). This is shown in the last panel of Fig. B1, where method 1 would imply sharp oscillations around the MM-stable line at the beginning of the interval, which is misleading. In contrast, method 2 predicts marginally MM-stable conditions ($\text{MMIC} \approx 0$) in this time span. After 11:28 UT, both methods agree rather well.

It is important to note here that the validity of any of those methods depends on the quality of the ion velocity distribution measured in the first place, and the field of view (FOV) of the instrument (Halekas, Brain, et al., 2017). If the direction of the magnetic field for example lies in the blind sectors of the plasma instrument due its limited FOV, the parallel estimate of the pressure tensor will become difficult to assess and likely underestimated. Likewise, if the instrument does scan through the direction where the magnetic field points, the parallel direction and only one perpendicular direction (corresponding to the largest eigenvalue) will be well-defined. Assumptions on either P_{\parallel} or P_{\perp} must thus be made depending on the case. For SWIA, the coarse mode usually adopted in the magnetosheath has an angular FOV of $360^{\circ} \times 90^{\circ}$ (SWICA mode), which, despite its broad coverage in comparison to other more FOV-limited modes, needs to be checked against the magnetic field direction for each event, separately.

In conclusion, method 2, being more physical, should always be preferred over method 1 when magnetic field measurements are available, unless the velocity distribution function is shown to be spherically or cylindrically symmetric. Vigilant care in the interpretation is strongly recommended in all cases.

Acknowledgments

C. Simon Wedlund, M. Volwerk and C. Möstl thank the Austrian Science Fund (FWF): P32035-N36, P31659-N27, P31521-N27. The calibrated MAVEN/MAG, SWIA and SWEA datasets are available from the NASA Planetary Data System (PDS). Throughout the manuscript all inverse tangents were calculated using the atan2 function in order to resolve all four angular quadrants. CSW acknowledges Yair Altman for developing and maintaining the Matlab package “export_fig” for figure pdf exports.

References

- Ala-Lahti, M. M., Kilpua, E. K. J., Dimmock, A. P., Osmane, A., Pulkkinen, T., & Soucek, J. (2018, May). Statistical analysis of mirror mode waves in sheath regions driven by interplanetary coronal mass ejection. *Ann. Geophys.*, 36(3), 793–808. Retrieved 2020-10-07, from <https://angeo.copernicus.org/articles/36/793/2018/> doi: 10.5194/angeo-36-793-2018
- Anderson, B. J., Fuselier, S. A., Gary, S. P., & Denton, R. E. (1994). Magnetic spectral signatures in the Earth’s magnetosheath and plasma depletion layer. *Journal of Geophysical Research: Space Physics*, 99(A4), 5877–5891. Retrieved 2020-01-16, from <http://agupubs.onlinelibrary.wiley.com/doi/abs/10.1029/93JA02827> doi: 10.1029/93JA02827
- Bader, A., Wieser, G. S., André, M., Wieser, M., Futaana, Y., Persson, M., ... Zhang, T. L. (2019). Proton Temperature Anisotropies in the Plasma Environment of Venus. *Journal of Geophysical Research: Space Physics*, 124(5), 3312–3330. Retrieved 2021-06-17, from <http://agupubs.onlinelibrary.wiley.com/doi/abs/10.1029/2019JA026619> (_eprint:

- 809 <https://onlinelibrary.wiley.com/doi/pdf/10.1029/2019JA026619> doi: 10.1029/
810 2019JA026619
- 811 Bale, S. D., Balikhin, M. A., Horbury, T. S., Krasnoselskikh, V. V., Kucharek, H., Möbius,
812 E., ... Thomsen, M. F. (2005, June). Quasi-perpendicular Shock Structure and Pro-
813 cesses. In *Outer Magnetospheric Boundaries: Cluster Results* (Vol. 20, pp. 161–203).
814 Dordrecht: Springer. Retrieved 2020-08-11, from [https://doi.org/10.1007/
815 s11214-005-3827-0](https://doi.org/10.1007/s11214-005-3827-0)
- 816 Bale, S. D., Kasper, J. C., Howes, G. G., Quataert, E., Salem, C., & Sundkvist, D. (2009,
817 November). Magnetic Fluctuation Power Near Proton Temperature Anisotropy In-
818 stability Thresholds in the Solar Wind. *Phys. Rev. Lett.*, 103(21), 211101. Retrieved
819 2019-09-16, from [https://link.aps.org/doi/10.1103/PhysRevLett.103
820 .211101](https://link.aps.org/doi/10.1103/PhysRevLett.103.211101) doi: 10.1103/PhysRevLett.103.211101
- 821 Balikhin, M. A., Pokhotelov, O. A., Walker, S. N., Boynton, R. J., & Beloff, N. (2010). Mir-
822 ror mode peaks: THEMIS observations versus theories. *Geophysical Research Letters*,
823 37(5). Retrieved 2020-02-11, from [http://agupubs.onlinelibrary.wiley.com/
824 doi/abs/10.1029/2009GL042090](http://agupubs.onlinelibrary.wiley.com/doi/abs/10.1029/2009GL042090) doi: 10.1029/2009GL042090
- 825 Barabash, S., Sauvaud, J. A., Gunell, H., Andersson, H., Grigoriev, A., Brinkfeldt, K., ...
826 Bochsler, P. (2007, October). The Analyser of Space Plasmas and Energetic Atoms
827 (ASPERA-4) for the Venus Express mission. *Planetary and Space Science*, 55(12),
828 1772–1792. Retrieved 2021-05-06, from [https://www.sciencedirect.com/
829 science/article/pii/S003206330700013X](https://www.sciencedirect.com/science/article/pii/S003206330700013X) doi: 10.1016/j.pss.2007.01.014
- 830 Bertucci, C., Mazelle, C., Crider, D. H., Mitchell, D. L., Sauer, K., Acuña, M. H., ...
831 Winterhalter, D. (2004, January). MGS MAG/ER observations at the mag-
832 netic pileup boundary of Mars: draping enhancement and low frequency waves.
833 *Advances in Space Research*, 33(11), 1938–1944. Retrieved 2020-10-01, from
834 <http://www.sciencedirect.com/science/article/pii/S0273117704000341>
835 doi: 10.1016/j.asr.2003.04.054
- 836 Califano, F., Hellinger, P., Kuznetsov, E., Passot, T., Sulem, P. L., & Trávníček,
837 P. M. (2008). Nonlinear mirror mode dynamics: Simulations and
838 modeling. *Journal of Geophysical Research: Space Physics*, 113(A8).
839 Retrieved 2020-11-03, from [http://agupubs.pericles.prod
840 .literatumonline.com/doi/abs/10.1029/2007JA012898](http://agupubs.pericles.prod.literatumonline.com/doi/abs/10.1029/2007JA012898) (_eprint:
841 <https://onlinelibrary.wiley.com/doi/pdf/10.1029/2007JA012898>) doi: 10.1029/
842 2007JA012898
- 843 Connerney, J. E. P., Espley, J., Lawton, P., Murphy, S., Odom, J., Oliverson, R., & Sheppard,
844 D. (2015, December). The MAVEN Magnetic Field Investigation. *Space Sci Rev*,
845 195(1-4), 257–291. Retrieved 2019-10-10, from [http://link.springer.com/
846 10.1007/s11214-015-0169-4](http://link.springer.com/10.1007/s11214-015-0169-4) doi: 10.1007/s11214-015-0169-4
- 847 Dimmock, A. P., Osmane, A., Pulkkinen, T. I., & Nykyri, K. (2015). A statistical study of
848 the dawn-dusk asymmetry of ion temperature anisotropy and mirror mode occurrence
849 in the terrestrial dayside magnetosheath using THEMIS data. *Journal of Geophysical
850 Research: Space Physics*, 120(7), 5489–5503. Retrieved 2020-10-07, from [http://
851 agupubs.onlinelibrary.wiley.com/doi/abs/10.1002/2015JA021192](http://agupubs.onlinelibrary.wiley.com/doi/abs/10.1002/2015JA021192)
852 (_eprint: <https://onlinelibrary.wiley.com/doi/pdf/10.1002/2015JA021192>) doi:
853 10.1002/2015JA021192
- 854 Erdős, G., & Balogh, A. (1996). Statistical properties of mirror mode structures ob-
855 served by Ulysses in the magnetosheath of Jupiter. *Journal of Geophysical Re-
856 search: Space Physics*, 101(A1), 1–12. Retrieved 2020-01-31, from [http://
857 agupubs.onlinelibrary.wiley.com/doi/abs/10.1029/95JA02207](http://agupubs.onlinelibrary.wiley.com/doi/abs/10.1029/95JA02207) doi:
858 10.1029/95JA02207
- 859 Espley, J. R., Cloutier, P. A., Brain, D. A., Crider, D. H., & Acuña, M. H. (2004).
860 Observations of low-frequency magnetic oscillations in the Martian magne-
861 tosheath, magnetic pileup region, and tail. *Journal of Geophysical Research:
862 Space Physics*, 109(A7). Retrieved 2020-10-07, from [http://agupubs
863 .onlinelibrary.wiley.com/doi/abs/10.1029/2003JA010193](http://agupubs.onlinelibrary.wiley.com/doi/abs/10.1029/2003JA010193) (_eprint:

- https://onlinelibrary.wiley.com/doi/pdf/10.1029/2003JA010193) doi: 10.1029/2003JA010193
- Fuselier, S. A., Anderson, B. J., Gary, S. P., & Denton, R. E. (1994). Inverse correlations between the ion temperature anisotropy and plasma beta in the Earth's quasi-parallel magnetosheath. *Journal of Geophysical Research: Space Physics*, 99(A8), 14931–14936. Retrieved 2020-01-16, from <http://agupubs.onlinelibrary.wiley.com/doi/abs/10.1029/94JA00865> doi: 10.1029/94JA00865
- Génot, V. (2008, October). Mirror and Firehose Instabilities in the Heliosheath. *ApJ*, 687(2), L119. Retrieved 2020-02-11, from <http://iopscience.iop.org/article/10.1086/593325/meta> doi: 10.1086/593325
- Génot, V., Budnik, E., Hellinger, P., Passot, T., Belmont, G., Trávníček, P. M., ... Dandouras, I. (2009, February). Mirror structures above and below the linear instability threshold: Cluster observations, fluid model and hybrid simulations. *Ann. Geophys.*, 27(2), 601–615. Retrieved 2020-01-08, from <https://www.ann-geophys.net/27/601/2009/> doi: 10.5194/angeo-27-601-2009
- Génot, V., Budnik, E., Jacquy, C., Dandouras, I., & Lucek, E. (2009, August). Mirror modes observed with Cluster in the Earth's magnetosheath: statistical study and IMF/solar wind dependence. In *Advances in Geosciences* (Vol. 14, pp. 263–283). World Scientific Publishing Company. Retrieved 2019-09-09, from http://www.worldscientific.com/doi/abs/10.1142/9789812836205_0019 doi: 10.1142/9789812836205_0019
- Génot, V., Schwartz, S. J., Mazelle, C., Balikhin, M., Dunlop, M., & Bauer, T. M. (2001, October). Kinetic study of the mirror mode. *J. Geophys. Res.*, 106(A10), 21611–21622. Retrieved 2019-09-09, from <http://doi.wiley.com/10.1029/2000JA000457> doi: 10.1029/2000JA000457
- Glassmeier, K. H., Motschmann, U., Mazelle, C., Neubauer, F. M., Sauer, K., Fuselier, S. A., & Acuña, M. H. (1993). Mirror modes and fast magnetoacoustic waves near the magnetic pileup boundary of comet P/Halley. *Journal of Geophysical Research: Space Physics*, 98(A12), 20955–20964. Retrieved 2020-03-03, from <http://agupubs.onlinelibrary.wiley.com/doi/abs/10.1029/93JA02582> (_eprint: <https://onlinelibrary.wiley.com/doi/pdf/10.1029/93JA02582>) doi: 10.1029/93JA02582
- Gruesbeck, J. R., Espley, J. R., Connerney, J. E. P., DiBraccio, G. A., Soobiah, Y. I., Brain, D., ... Mitchell, D. L. (2018). The Three-Dimensional Bow Shock of Mars as Observed by MAVEN. *Journal of Geophysical Research: Space Physics*, 123(6), 4542–4555. Retrieved 2019-10-14, from <https://agupubs.onlinelibrary.wiley.com/doi/abs/10.1029/2018JA025366> doi: 10.1029/2018JA025366
- Halekas, J. S., Brain, D. A., Luhmann, J. G., DiBraccio, G. A., Ruhunusiri, S., Harada, Y., ... Jakosky, B. M. (2017). Flows, Fields, and Forces in the Mars-Solar Wind Interaction. *Journal of Geophysical Research: Space Physics*, 122(11), 11,320–11,341. Retrieved 2021-04-15, from <http://agupubs.onlinelibrary.wiley.com/doi/abs/10.1002/2017JA024772> (_eprint: <https://onlinelibrary.wiley.com/doi/pdf/10.1002/2017JA024772>) doi: <https://doi.org/10.1002/2017JA024772>
- Halekas, J. S., Lillis, R. J., Mitchell, D. L., Cravens, T. E., Mazelle, C., Connerney, J. E. P., ... Ruhunusiri, S. (2015). MAVEN observations of solar wind hydrogen deposition in the atmosphere of Mars. *Geophysical Research Letters*, 42(21), 8901–8909. Retrieved 2020-02-13, from <http://agupubs.onlinelibrary.wiley.com/doi/abs/10.1002/2015GL064693> doi: 10.1002/2015GL064693
- Halekas, J. S., Ruhunusiri, S., Harada, Y., Collinson, G., Mitchell, D. L., Mazelle, C., ... Jakosky, B. M. (2017). Structure, dynamics, and seasonal variability of the Mars-solar wind interaction: MAVEN Solar Wind Ion Analyzer in-flight performance and science results. *Journal of Geophysical Research: Space Physics*, 122(1), 547–578. Retrieved 2019-10-29, from <https://agupubs.onlinelibrary.wiley.com/doi/abs/10.1002/2016JA023167> doi: 10.1002/2016JA023167

- Halekas, J. S., Taylor, E. R., Dalton, G., Johnson, G., Curtis, D. W., McFadden, J. P., ... Jakosky, B. M. (2015, December). The Solar Wind Ion Analyzer for MAVEN. *Space Sci Rev*, 195(1), 125–151. Retrieved 2019-10-29, from <https://doi.org/10.1007/s11214-013-0029-z> doi: 10.1007/s11214-013-0029-z
- Hasegawa, A. (1969). Drift Mirror Instability in the Magnetosphere. *Phys. Fluids*, 12(12), 2642. Retrieved 2019-09-09, from <https://aip.scitation.org/doi/10.1063/1.1692407> doi: 10.1063/1.1692407
- Hellinger, P., Landi, S., Matteini, L., Verdini, A., & Franci, L. (2017, April). Mirror Instability in the Turbulent Solar Wind. *ApJ*, 838(2), 158. Retrieved 2019-09-09, from <http://stacks.iop.org/0004-637X/838/i=2/a=158?key=crossref.9becd38032e5c525be158d014760bf3a> doi: 10.3847/1538-4357/aa67e0
- Hellinger, P., Trávníček, P., Kasper, J. C., & Lazarus, A. J. (2006). Solar wind proton temperature anisotropy: Linear theory and WIND/SWE observations. *Geophysical Research Letters*, 33(9). Retrieved 2021-06-28, from <https://agupubs.onlinelibrary.wiley.com/doi/abs/10.1029/2006GL025925> (_eprint: <https://agupubs.onlinelibrary.wiley.com/doi/pdf/10.1029/2006GL025925>) doi: 10.1029/2006GL025925
- Joy, S. P., Kivelson, M. G., Walker, R. J., Khurana, K. K., Russell, C. T., & Paterson, W. R. (2006, December). Mirror mode structures in the Jovian magnetosheath. *J. Geophys. Res.*, 111(A12), A12212. Retrieved 2020-04-26, from <http://doi.wiley.com/10.1029/2006JA011985> doi: 10.1029/2006JA011985
- Kaufmann, R. L., Horng, J.-T., & Wolfe, A. (1970). Large-amplitude hydromagnetic waves in the inner magnetosheath. *Journal of Geophysical Research (1896-1977)*, 75(25), 4666–4676. Retrieved 2020-02-17, from <http://agupubs.onlinelibrary.wiley.com/doi/abs/10.1029/JA075i025p04666> doi: 10.1029/JA075i025p04666
- Kivelson, M. G., & Southwood, D. J. (1996, August). Mirror instability II: The mechanism of nonlinear saturation. *J. Geophys. Res.*, 101(A8), 17365–17371. Retrieved 2019-09-09, from <http://doi.wiley.com/10.1029/96JA01407> doi: 10.1029/96JA01407
- Laakso, H., Taylor, M. G. T. T., & Escoubet, C. P. (Eds.). (2010). *The Cluster active archive: studying the Earth's space plasma environment*. Dordrecht ; New York: Springer. (OCLC: ocn434563999)
- Lucek, E. A., Dunlop, M. W., Balogh, A., Cargill, P., Baumjohann, W., Georgescu, E., ... Fornaçon, K.-H. (1999a, December). Identification of magnetosheath mirror modes in Equator-S magnetic field data. *Annales Geophysicae*, 17(12), 1560–1573. Retrieved 2019-09-09, from <https://doi.org/10.1007/s00585-999-1560-9> doi: 10.1007/s00585-999-1560-9
- Lucek, E. A., Dunlop, M. W., Balogh, A., Cargill, P., Baumjohann, W., Georgescu, E., ... Fornaçon, K. H. (1999b, July). Mirror mode structures observed in the dawn-side magnetosheath by Equator-S. *Geophys. Res. Lett.*, 26(14), 2159–2162. Retrieved 2019-09-09, from <http://doi.wiley.com/10.1029/1999GL0900490> doi: 10.1029/1999GL0900490
- Madanian, H., Halekas, J. S., Mazelle, C. X., Omid, N., Espley, J. R., Mitchell, D. L., & McFadden, J. P. (2020, January). Magnetic Holes Upstream of the Martian Bow Shock: MAVEN Observations. *J. Geophys. Res. Space Physics*, 125(1). Retrieved 2020-01-31, from <https://onlinelibrary.wiley.com/doi/abs/10.1029/2019JA027198> doi: 10.1029/2019JA027198
- Mazelle, C. (1990). *Etude de l'interaction du vent solaire et de la comète de Halley : analyse des propriétés du plasma dans la région d'empilement magnétique* (These de doctorat, Toulouse 3). Retrieved 2021-06-28, from <https://www.theses.fr/1990TOU30170>
- Mazelle, C., Belmont, G., Glassmeier, K.-H., Le Quéau, D., & Rème, H. (1991, January). Ultra low frequency waves at the magnetic pile-up boundary of comet P/Halley. *Advances in Space Research*, 11(9), 73–77. Retrieved 2021-06-21, from <https://linkinghub.elsevier.com/retrieve/pii/027311779190014B> doi: 10.1016/0273-1177(91)90014-B

- McFadden, J. P., Kortmann, O., Curtis, D., Dalton, G., Johnson, G., Abiad, R., ... Jakosky, B. (2015, December). MAVEN SupraThermal and Thermal Ion Composition (STATIC) Instrument. *Space Sci Rev*, 195(1), 199–256. Retrieved 2020-02-13, from <https://doi.org/10.1007/s11214-015-0175-6> doi: 10.1007/s11214-015-0175-6
- Mitchell, D. L., Mazelle, C., Sauvaud, J.-A., Thocaven, J.-J., Rouzaud, J., Fedorov, A., ... Jakosky, B. M. (2016, April). The MAVEN Solar Wind Electron Analyzer. *Space Sci Rev*, 200(1), 495–528. Retrieved 2021-05-06, from <https://doi.org/10.1007/s11214-015-0232-1> doi: 10.1007/s11214-015-0232-1
- Osmane, A., Dimmock, A. P., & Pulkkinen, T. I. (2015, May). Universal properties of mirror mode turbulence in the Earth's magnetosheath: PROPERTIES OF MIRROR MODE TURBULENCE. *Geophys. Res. Lett.*, 42(9), 3085–3092. Retrieved 2019-11-20, from <http://doi.wiley.com/10.1002/2015GL063771> doi: 10.1002/2015GL063771
- Paschmann, G., Fazakerley, A. N., & Schwartz, S. J. (1998, January). Moments of Plasma Velocity Distributions. *ISSI Scientific Reports Series*, 1, 125–158. Retrieved 2021-06-17, from <https://ui.adsabs.harvard.edu/abs/1998ISSIR...1..125P>
- Peng, I. B., Markidis, S., Laure, E., Johlander, A., Vaivads, A., Khotyaintsev, Y., ... Lapenta, G. (2015, September). Kinetic structures of quasi-perpendicular shocks in global particle-in-cell simulations. *Physics of Plasmas*, 22(9), 092109. Retrieved 2021-06-17, from <http://aip.scitation.org/doi/10.1063/1.4930212> (Publisher: American Institute of Physics) doi: 10.1063/1.4930212
- Plaschke, F., Karlsson, T., Götz, C., Möstl, C., Richter, I., Volwerk, M., ... Goldstein, R. (2018, October). First observations of magnetic holes deep within the coma of a comet. *A&A*, 618, A114. Retrieved 2020-01-29, from <https://www.aanda.org/10.1051/0004-6361/201833300> doi: 10.1051/0004-6361/201833300
- Price, C. P., Swift, D. W., & Lee, L.-C. (1986). Numerical simulation of nonoscillatory mirror waves at the Earth's magnetosheath. *Journal of Geophysical Research: Space Physics*, 91(A1), 101–112. Retrieved 2019-11-28, from <http://agupubs.onlinelibrary.wiley.com/doi/abs/10.1029/JA091iA01p00101> doi: 10.1029/JA091iA01p00101
- Romanelli, N., Mazelle, C., Chaufray, J. Y., Meziane, K., Shan, L., Ruhunusiri, S., ... Jakosky, B. M. (2016). Proton cyclotron waves occurrence rate upstream from Mars observed by MAVEN: Associated variability of the Martian upper atmosphere. *Journal of Geophysical Research: Space Physics*, 121(11), 11,113–11,128. Retrieved 2021-06-17, from <http://agupubs.onlinelibrary.wiley.com/doi/abs/10.1002/2016JA023270> (_eprint: <https://onlinelibrary.wiley.com/doi/pdf/10.1002/2016JA023270>) doi: 10.1002/2016JA023270
- Ruhunusiri, S., Halekas, J. S., Connerney, J. E. P., Espley, J. R., McFadden, J. P., Larson, D. E., ... Jakosky, B. M. (2015). Low-frequency waves in the Martian magnetosphere and their response to upstream solar wind driving conditions. *Geophysical Research Letters*, 42(21), 8917–8924. Retrieved 2019-12-05, from <http://agupubs.onlinelibrary.wiley.com/doi/abs/10.1002/2015GL064968> doi: 10.1002/2015GL064968
- Russell, C. T., Riedler, W., Schwingenschuh, K., & Yeroshenko, Y. (1987). Mirror instability in the magnetosphere of comet Halley. *Geophysical Research Letters*, 14(6), 644–647. Retrieved 2020-02-27, from <http://agupubs.onlinelibrary.wiley.com/doi/abs/10.1029/GL014i006p00644> (_eprint: <https://onlinelibrary.wiley.com/doi/pdf/10.1029/GL014i006p00644>) doi: 10.1029/GL014i006p00644
- Sahraoui, F., Pinçon, J. L., Belmont, G., Rezeau, L., Cornilleau-Wehrlin, N., Robert, P., ... Chanteur, G. (2003). ULF wave identification in the magnetosheath: The k-filtering technique applied to Cluster II data. *Journal of Geophysical Research: Space Physics*, 108(A9). Retrieved 2020-02-11, from <http://agupubs.onlinelibrary.wiley.com/doi/abs/10.1029/2002JA009587> doi: 10.1029/2002JA009587
- Sahraoui, F., Pinçon, J. L., Belmont, G., Rezeau, L., Cornilleau-Wehrlin, N., Robert, P.,

- ... Chanteur, G. (2004). Correction to “ULF wave identification in the magnetosheath: The k-filtering technique applied to Cluster II data”. *Journal of Geophysical Research: Space Physics*, 109(A4). Retrieved 2020-02-11, from <http://agupubs.onlinelibrary.wiley.com/doi/abs/10.1029/2004JA010469> doi: 10.1029/2004JA010469
- Sergeev, V. A., Sormakov, D. A., Apatenkov, S. V., Baumjohann, W., Nakamura, R., Runov, A. V., ... Nagai, T. (2006, August). Survey of large-amplitude flapping motions in the midtail current sheet. *Annales Geophysicae*, 24(7), 2015–2024. Retrieved 2021-07-01, from <https://angeo.copernicus.org/articles/24/2015/2006/angeo-24-2015-2006.html> (Publisher: Copernicus GmbH) doi: 10.5194/angeo-24-2015-2006
- Simon Wedlund, C., Volwerk, M., Beth, A., Mazelle, C., Möstl, C., Halekas, J., ... Rojas-Castillo, D. (2021). A fast bow shock location predictor-estimator from 2d and 3d analytical models: Application to mars and the maven mission. *in preparation*, 1–20. doi: -
- Slavin, J. A., & Holzer, R. E. (1981, December). Solar wind flow about the terrestrial planets I. Modeling bow shock position and shape. *Journal of Geophysical Research: Space Physics*, 86(A13), 11401–11418. Retrieved 2019-10-15, from <http://agupubs.onlinelibrary.wiley.com/doi/abs/10.1029/JA086iA13p11401> doi: 10.1029/JA086iA13p11401
- Song, P., Russell, C. T., & Gary, S. P. (1994). Identification of low-frequency fluctuations in the terrestrial magnetosheath. *J. Geophys. Res.*, 99(A4), 6011. Retrieved 2019-10-03, from <http://doi.wiley.com/10.1029/93JA03300> doi: 10.1029/93JA03300
- Sonnerup, B. U. Ö., & Scheible, M. (1998). Minimum and Maximum Variance Analysis. In *Analysis Methods for Multi-Spacecraft Data* (Götz Paschmann and Patrick W. Daly ed., pp. 185–220). ISSI/ESA.
- Soucek, J., & Escoubet, C. P. (2011, June). Cluster observations of trapped ions interacting with magnetosheath mirror modes. *Ann. Geophys.*, 29(6), 1049–1060. Retrieved 2020-11-11, from <https://angeo.copernicus.org/articles/29/1049/2011/> doi: 10.5194/angeo-29-1049-2011
- Soucek, J., Lucek, E., & Dandouras, I. (2008, April). Properties of magnetosheath mirror modes observed by Cluster and their response to changes in plasma parameters. *Journal of Geophysical Research: Space Physics*, 113(A4). Retrieved 2019-09-17, from <https://agupubs.onlinelibrary.wiley.com/doi/10.1029/2007JA012649> doi: 10.1029/2007JA012649
- Swisdak, M. (2016, January). Quantifying gyrotropy in magnetic reconnection. *Geophys. Res. Lett.*, 43(1), 43–49. Retrieved 2021-06-17, from <https://onlinelibrary.wiley.com/doi/abs/10.1002/2015GL066980> doi: 10.1002/2015GL066980
- Tátrallyay, M., & Erdős, G. (2002, April). The evolution of mirror mode fluctuations in the terrestrial magnetosheath. *Planetary and Space Science*, 50(5), 593–599. Retrieved 2020-01-08, from <http://www.sciencedirect.com/science/article/pii/S0032063302000387> doi: 10.1016/S0032-0633(02)00038-7
- Treumann, R. A., Jaroschek, C. H., Constantinescu, O. D., Nakamura, R., Pokhotelov, O. A., & Georgescu, E. (2004, December). The strange physics of low frequency mirror mode turbulence in the high temperature plasma of the magnetosheath. *Nonlin. Processes Geophys.*, 11(5/6), 647–657. Retrieved 2019-09-09, from <http://www.nonlin-processes-geophys.net/11/647/2004/> doi: 10.5194/npg-11-647-2004
- Tsurutani, B. T., Echer, E., Verkhoglyadova, O. P., Lakhina, G. S., & Guarnieri, F. L. (2011, July). Mirror instability upstream of the termination shock (TS) and in the heliosheath. *Journal of Atmospheric and Solar-Terrestrial Physics*, 73(11), 1398–1404. Retrieved 2021-05-06, from <https://www.sciencedirect.com/science/article/pii/S1364682610001835> doi: 10.1016/j.jastp.2010.06.007
- Tsurutani, B. T., Lakhina, G. S., Verkhoglyadova, O. P., Echer, E., Guarnieri, F. L., Narita, Y., & Constantinescu, D. O. (2011, February). Magnetosheath and heliosheath mirror

- mode structures, interplanetary magnetic decreases, and linear magnetic decreases: Differences and distinguishing features: REVIEW. *J. Geophys. Res.*, 116(A2), n/a–n/a. Retrieved 2019-09-09, from <http://doi.wiley.com/10.1029/2010JA015913> doi: 10.1029/2010JA015913
- Tsurutani, B. T., Richardson, I. G., Lepping, R. P., Zwickl, R. D., Jones, D. E., Smith, E. J., & Bame, S. J. (1984). Drift mirror Mode waves in the distant ($X \sim 200$ Re) magnetosheath. *Geophysical Research Letters*, 11(10), 1102–1105. Retrieved 2020-01-31, from <http://agupubs.onlinelibrary.wiley.com/doi/abs/10.1029/GL011i010p01102> doi: 10.1029/GL011i010p01102
- Violante, L., Cattaneo, M. B. B., Moreno, G., & Richardson, J. D. (1995). Observations of mirror waves and plasma depletion layer upstream of Saturn’s magnetopause. *Journal of Geophysical Research: Space Physics*, 100(A7), 12047–12055. Retrieved 2020-01-31, from <http://agupubs.onlinelibrary.wiley.com/doi/abs/10.1029/94JA02703> doi: 10.1029/94JA02703
- Volwerk, M. (2006). Multi-Satellite Observations of ULF Waves. In *Magnetospheric ULF Waves: Synthesis and New Directions* (pp. 109–135). American Geophysical Union (AGU). Retrieved 2021-07-01, from <http://agupubs.onlinelibrary.wiley.com/doi/abs/10.1029/169GM09> (eprint: <https://onlinelibrary.wiley.com/doi/pdf/10.1029/169GM09>) doi: 10.1029/169GM09
- Volwerk, M., Glassmeier, K.-H., Delva, M., Schmid, D., Koenders, C., Richter, I., & Szegő, K. (2014, November). A comparison between VEGA 1, 2 and Giotto flybys of comet 1P/Halley: implications for Rosetta. *Annales Geophysicae*, 32(11), 1441–1453. Retrieved 2021-07-01, from <https://angeo.copernicus.org/articles/32/1441/2014/> (Publisher: Copernicus GmbH) doi: 10.5194/angeo-32-1441-2014
- Volwerk, M., Richter, I., Tsurutani, B., Götz, C., Altwegg, K., Broiles, T., ... Glassmeier, K.-H. (2016, January). Mass-loading, pile-up, and mirror-mode waves at comet 67P/Churyumov-Gerasimenko. *Ann. Geophys.*, 34(1), 1–15. Retrieved 2019-09-10, from <https://www.ann-geophys.net/34/1/2016/> doi: 10.5194/angeo-34-1-2016
- Volwerk, M., Schmid, D., Tsurutani, B. T., Delva, M., Plaschke, F., Narita, Y., ... Glassmeier, K.-H. (2016, November). Mirror mode waves in Venus’s magnetosheath: solar minimum vs. solar maximum. *Ann. Geophys.*, 34(11), 1099–1108. Retrieved 2019-09-10, from <https://www.ann-geophys.net/34/1099/2016/> doi: 10.5194/angeo-34-1099-2016
- Volwerk, M., Zhang, T. L., Delva, M., Vörös, Z., Baumjohann, W., & Glassmeier, K.-H. (2008a, June). First identification of mirror mode waves in Venus’ magnetosheath?: VENUS’ MIRROR MODE WAVES. *Geophys. Res. Lett.*, 35(12), n/a–n/a. Retrieved 2019-09-09, from <http://doi.wiley.com/10.1029/2008GL033621> doi: 10.1029/2008GL033621
- Volwerk, M., Zhang, T. L., Delva, M., Vörös, Z., Baumjohann, W., & Glassmeier, K.-H. (2008b, December). Mirror-mode-like structures in Venus’ induced magnetosphere. *J. Geophys. Res.*, 113, E00B16. Retrieved 2019-09-10, from <http://doi.wiley.com/10.1029/2008JE003154> doi: 10.1029/2008JE003154
- Welch, P. (1967, June). The use of fast Fourier transform for the estimation of power spectra: A method based on time averaging over short, modified periodograms. *IEEE Transactions on Audio and Electroacoustics*, 15(2), 70–73. (Conference Name: IEEE Transactions on Audio and Electroacoustics) doi: 10.1109/TAU.1967.1161901
- Winterhalter, D., Neugebauer, M., Goldstein, B. E., Smith, E. J., Tsurutani, B. T., Bame, S. J., & Balogh, A. (1995, April). Magnetic holes in the solar wind and their relation to mirror-mode structures. *Space Sci Rev*, 72(1), 201–204. Retrieved 2020-02-13, from <https://doi.org/10.1007/BF00768780> doi: 10.1007/BF00768780
- Zhang, T. L., Russell, C. T., Baumjohann, W., Jian, L. K., Balikhin, M. A., Cao, J. B., ... Vörös, Z. (2008, May). Characteristic size and shape of the mirror mode structures in the solar wind at 0.72 AU. *Geophys. Res. Lett.*, 35(10). Retrieved 2019-09-20, from <http://doi.wiley.com/10.1029/2008GL033793> doi: 10.1029/2008GL033793