

Machine Learning Approach for Predicting Flowering Time in Sorghum

Aime V. Nishimwe

University of Nebraska-Lincoln, Schnable Lab

Random forest

Hyperspectral

Flowering



Acknowledgement: INBRE-NE, NAPPN, and The Charles O. Gardner Professorship
Endowment

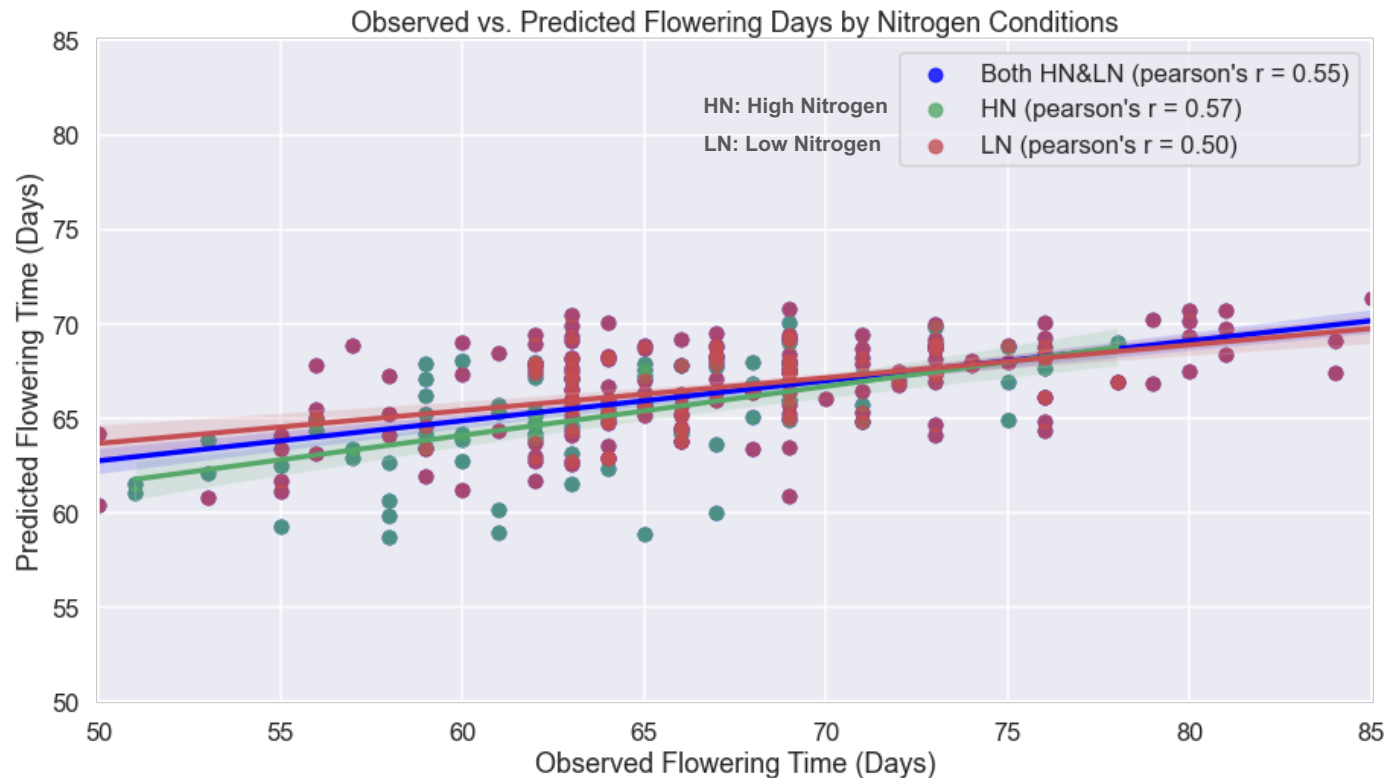
21 days

to score flowering time
in the field.



To 1 day

to score using our
model.



Nishimwe, A., Zwiener, M., Grzybowski, M., Ge, Y., and Schnable, J. C., "Machine learning approach for predicting flowering days in sorghum," *Earth and Space Science Open Archive*, 6 (2021). Retrieved from <https://doi.org/10.1002/essoar.10508812.1>



aime-valentin



**Aime Valentin
Nishimwe**



@AimeValentin