

Supplementary Material of "Impacts of Climate Change on Subannual Hydropower Generation: A Multi-model Assessment of the United States Federal Hydropower Plants"

Tian Zhou¹, Shih-Chieh Kao², Wenwei Xu¹, Sudershan Gangrade², and Nathalie Voisin^{1,3}

¹ Pacific Northwest National Laboratory, Richland, WA 99352, USA

² Oak Ridge National Laboratory, Oak Ridge, TN 37831, USA

³ University of Washington, Seattle, WA 98195, USA

E-mail: tian.zhou@pnnl.gov; nathalie.voisin@pnnl.gov

Sept. 2022

Submitted to: *Environ. Res. Lett.*

1. Additional Figures

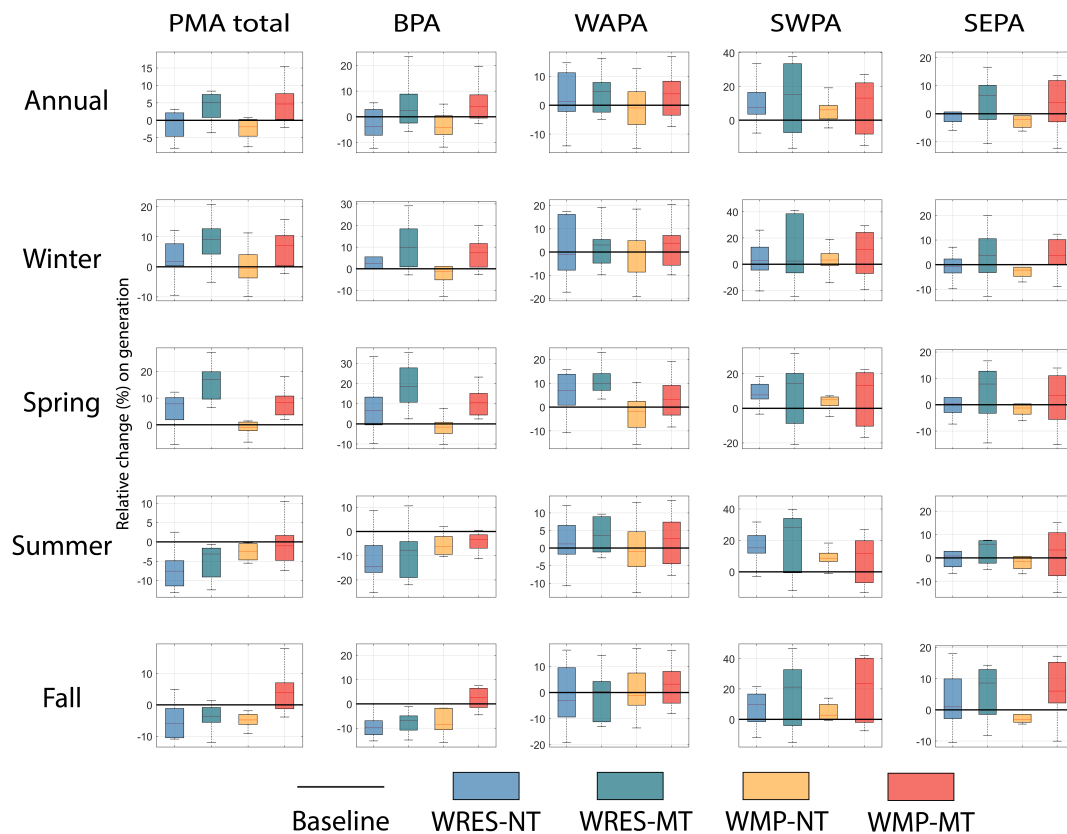


Figure S1. Changes of annual and seasonal hydropower generation compared between near-term (NT, 2011-2030), mid-term (MT, 2031-2050) relative to the baseline period (1966-2005) for WRES and WMP models