

# **An approach to link climate model tropical cyclogenesis bias to large-scale wind circulation modes**

**Xiangbo Feng<sup>1,2</sup>, Ralf Toumi<sup>2</sup>, Malcolm Roberts<sup>3</sup>, Kevin I. Hodges<sup>1</sup>, Pier Luigi Vidale<sup>1</sup>**

<sup>1</sup>National Centre for Atmospheric Science and Department of Meteorology, University of Reading, Reading, UK

<sup>2</sup>Department of Physics, Imperial College London, London, UK.

<sup>3</sup>Met Office Hadley Centre, Exeter, UK

Corresponding author: Xiangbo Feng ([xiangbo.feng@reading.ac.uk](mailto:xiangbo.feng@reading.ac.uk))

## **Key Points:**

- Multivariate empirical orthogonal functions are used to diagnose model bias of tropical cyclogenesis (TCG) in the West Pacific.
- Two leading modes of large-scale wind circulations can explain most of TCG variability in both ERA5 and MetUM.
- In MetUM, positive TCG bias is related to large-scale wind circulations biased towards the positive phase of the simulated modes.

## Abstract

Attributing sources of tropical cyclogenesis (TCG) bias to large-scale circulation in global circulation models is challenging. Here, we propose the use of empirical orthogonal functions as an approach to understand model bias of TCG. Two leading modes of large-scale wind circulations in the West Pacific can explain the TCG frequency and location in both climate reanalysis and the MetUM model. In the reanalysis, the two modes distinguish the summer monsoon trough position and the strength of the north Pacific subtropical high. However, in the model, the wind circulations are biased towards the positive phase of simulated modes thus overestimating TCG in the entire Main Development Region. This bias is further related to the north-eastward shifted monsoon trough and a weakened subtropical high, and overly strong tropics-subtropics connections. This approach could be deployed more widely to other basins and models to diagnose the causes of TCG bias.

## Plain Language Summary

General Circulation Models (GCMs) have bias in tropical cyclogenesis (TCG). This bias largely reduces the credibility of GCMs. In this study, we suggest an empirical orthogonal function (EOF)-based approach to trace the sources of TCG bias in the western North Pacific more rigorously back to large-scale wind circulation patterns. We find that TCG bias in both basin-wide and regional scales is a combination of the two biased circulation patterns, associated with too strong tropics-subtropics connections. The two biased circulation patterns are also featured with a north-eastward shifted monsoon trough and a weakened subtropical high. We choose the Met Office climate models to demonstrate the approach. But, it can be applied to other GCMs and basins to better understand TCG bias and inform further model development.

## 1. Introduction

The western North Pacific (WNP) is the most active ocean basin for tropical cyclones (TCs). Tropical cyclogenesis (TCG) climatology is fundamental for understanding TC variation and changes in the past and future. Large-scale wind circulations can provide favourable conditions for TCG (Lander and Holland, 1993; Ritchie & Holland, 1999; Wang, 2017; Wang et al., 2019, 2022; Feng et al., 2022). Through scale interactions with synoptic disturbances, the monsoon trough (MT) and intertropical convergence zone are hypothesized to act a “seeding bed” of WNP TCs (Wu et al., 2012; Feng and Wu, 2022; Gu et al., 2022). The above studies mostly composite synoptic wind circulations conditional on TCG events.

General Circulation Models (GCMs), including the models in the latest CMIP6 High Resolution Model Intercomparison Project (HighResMIP), have TCG bias in the WNP (e.g., Vecchi et al., 2014; Hsu et al., 2019; Roberts et al., 2020a,b; Feng et al., 2020; Vidale et al., 2021). Studies speculated that TCG bias in GCMs could be related to model deficiency in representing large-scale wind circulations (e.g., Bengtsson et al., 1995; Feng et al., 2020), because of inadequate model resolution (Roberts et al., 2015; 2020a,b) and uncertainty in stochastic physics (Vidale et al., 2021). Typical TCG bias diagnostics using long-term averages make it difficult to plausibly trace a link to large-scale wind circulations. Long-term TCG bias could be a combination of multiple TCG patterns associated with inadequate circulation anomalies. Thus, the cascade of processes in TCG and regional circulation biases is not clear. To

quantify the roles of large-scale circulations in TCG bias, sensitivity experiments by restricting circulation conditions may be required (e.g., Bush et al., 2014; Feng et al., 2019; Martin et al., 2021). However, these experiments are technically challenging and computationally expensive. In this study, instead, we use an empirical orthogonal function (EOF)-based approach to readily link the TCG bias to wind circulation patterns.

The approach helps to address the common questions in climate models: i) How well do climate models simulate the relationship between WNP TCG frequency and large-scale wind circulation patterns?, and ii) what roles do large-scale circulations have in TC bias? The Met Office atmosphere-only climate models are chosen here to demonstrate the approach. For WNP TCG, these models have consistent positive bias through the whole typhoon season in a hierarchy of simulations with various configurations in horizontal resolution and air-sea coupling, regardless of verification data source (Camp et al., 2015; Roberts et al., 2015, 2020a,b; Feng et al., 2019, 2020; Vidale et al., 2021). The TCG bias in the Met Office models was found to favour a northward shift and slow translation speed of tracks. This paper's scope is to propose a methodology to enable a clearer cascade of processes from large-scale wind circulations to the TCG bias, which can be adapted to other climate models and basins.

## 2 Data and Methods

### 2.1 Climate model simulations and reanalysis

We evaluated the present (1979–2014) atmosphere-only climate simulations of the UK Met Office Hadley Centre Global Environment Model version 3 (HadGEM3-GC3.1; Roberts et al. 2019; Williams et al. 2018), which participate in the CMIP6 HighResMIP atmosphere-only simulations (Haarsma et al. 2016). The HadGEM3-GC3.1 components include GA7.1 (N512, ~25km, for horizontal resolution; 85 vertical levels) for atmosphere, UKCA-GLOMAP-mode for aerosol, JULES-HadGEM3-GL7.1 for land surface, NEMO-GO6.0 for ocean and CICE-GSI8 for sea ice.

The atmosphere-only climate simulations used here are produced by GA7.1 with daily sea surface temperature (SST) forced by HadISST2 at 0.25° resolution interpolated to the model's atmospheric grid. Three ensemble members are generated by perturbing atmospheric physics tendencies randomly and continuously during the simulation by the Stochastic Kinetic Energy Backscatter v2 scheme (Bowler et al. 2009). Hereafter, in this paper, the GA7.1 simulations are termed as “MetUM” simulations.

We used atmospheric data from the ECMWF fifth generation climate reanalysis (ERA5; Hersbach et al., 2020) to validate TCG and wind circulations. The native horizontal resolution of ERA5 is 31km.

### 2.2 TC track

TCs are tracked and identified in ERA5, and in each member of the MetUM simulations, from six-hourly data on a common spectral grid (T63). Positive vorticity centres that exceed  $0.5 \times 10^{-5} \text{ s}^{-1}$  in the northern Hemisphere are tracked in the spectrally filtered 850hPa vorticity. Then, the vorticity maxima at levels from 850 to 200hPa are added to the tracks using a warm core search. The TC tracks are identified by applying the vorticity and warm core criteria tailored

for the model horizontal resolution. Details of the tracking and identification method are described in Hodges et al. (2017). TCG is defined as the first point of the identified track. The MetUM simulations and ERA5 have similar horizontal resolution and have the same TC tracking method, so that it is fairer to validate MetUM against ERA5 TCs than against observed TCs. The conclusions are unchanged when validating against the observed Best Track data, except the slightly larger bias in the east (Feng et al., 2020) related to an earlier identification of TCG in ERA5 (Feng et al., 2022) and some mismatched storms between the two datasets (Stansfield et al., 2020; Bourdin et al., 2022).

## 2.3 Analysis methods

The multivariate empirical orthogonal function (EOF) method (Wheeler and Hendon, 2004; Liang et al., 2018), which analyses multiple variables, is used to derive the temporally and spatially independent modes of horizontal wind circulation. The multivariate EOFs analyse the zonal and meridional wind velocities at 850hPa in the WNP (0–40°N, 90–180°E), both in ERA5 and the MetUM ensemble mean. We analyze the typhoon peak season (July–October) when 65–70% of TCs occur, over 1979–2014. Here, we only use the first two EOF components, which explain >65% of the variance in wind circulation (Figure S1). The 850hPa winds are used because they have a close relationship with TCG, although the EOF can be applied to winds at any other levels.

## 2.4 WNP summer monsoon indices

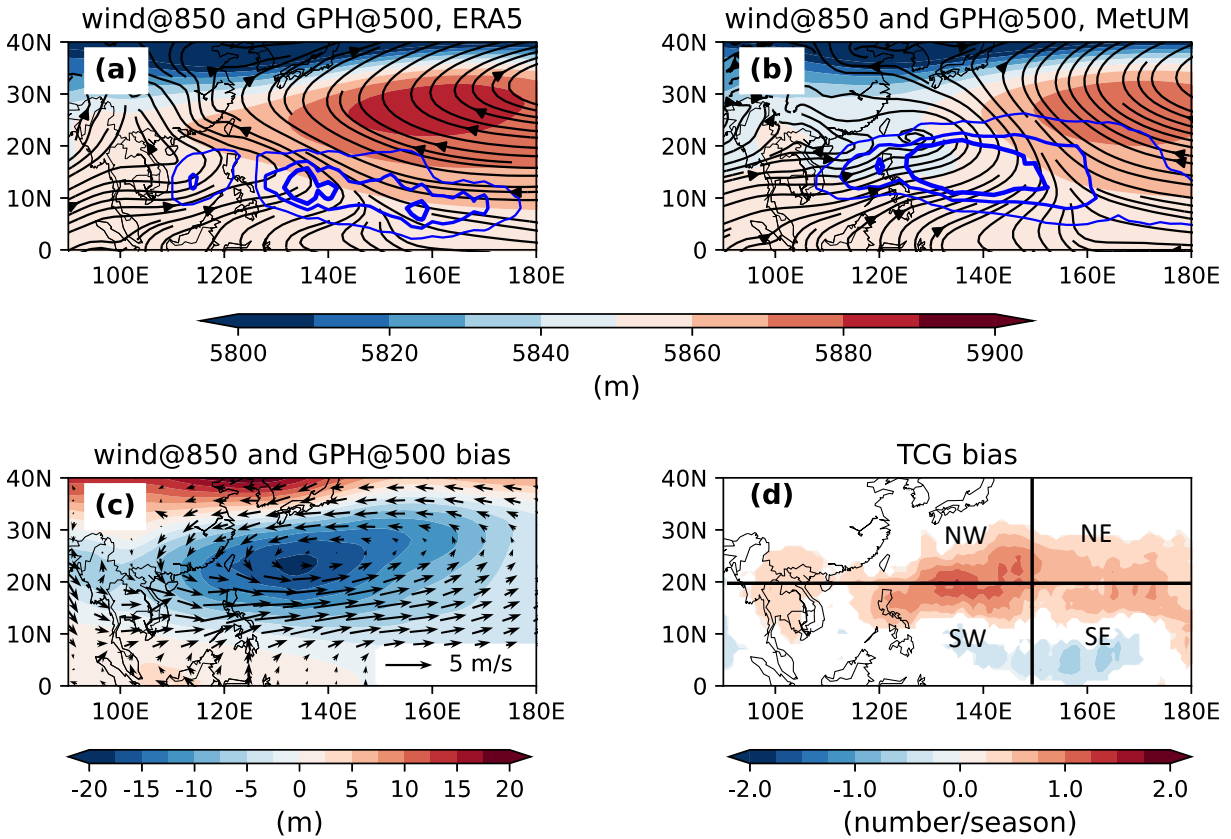
The monsoon trough (MT) index is defined as the average relative vorticity at 850hPa over 5–20°N, 135–165°E, indicating the MT longitudinal position (Wang and Wu, 2018). The strength of the North Pacific subtropical high (NPSH) is defined as 500hPa geopotential height averaged over 20–30°N, 130–150°E (Wang et al., 2013). The WNP summer monsoon (WNPSM) index is defined as the difference of average zonal winds at 850hPa between a southwestern region (5–15°N, 100–130°E) and a north-eastern region (20–30°N, 110–140°E) (Wang and Fan, 1999; Wang et al., 2001).

# 3 Results

## 3.1 Biases in large-scale circulations and TCG

In the WNP, during the typhoon peak season, the horizontal large-scale circulation is dominated by the WNPSM system (Wang and Fan, 1999; Wang et al., 2001). In ERA5, at the lower troposphere, the basic state of the WNPSM consists of prevailing south-westerly monsoon winds from the northern Indian Ocean, and easterly trade winds steering along the western and equatorward sides of the NPSH (15–30°N, 140–180°E) (Figure 1a). The steering flow in the equatorward flank of the NPSH is in conjunction with the Pacific Walker circulation. The south-westerly monsoon winds and easterly trade winds form a northwest-southeast oriented MT, which is depicted by strong relative vorticity (RV) and convergence in the lower tropospheric, and strong outflow at the upper level (Figure S2a-b). Additionally, the MT is also bounded with low vertical wind shear (VWS) and increased relative humidity (RH) (Figure S2c-d). These conditions create favourable environment for TCG, as indicated by the northwest-to-southeast tilted distribution of TCG in ERA5 (Figure 1a). The Main Development Region (MDR) is east of

the Philippines and the South China Sea.



**Figure 1.** (a) Climatology of 850hPa wind streamlines (vector), 500hPa geopotential height (GPH, shading), and TCG density (blue contours at 1.0, 1.5 and 1.8 number/season) over 1979–2014, in ERA5. (b) as (a), but in MetUM. (c) Bias of 850hPa winds (vector) and 500hPa GPH (shading) over 1979–2014 in MetUM, against ERA5. (d) Bias of TCG density over 1979–2014 in MetUM, against ERA5. In (d), the basin is divided into four sectors: northwest (NW, 20–40°N, 90–150°E), northeast (NE, 20–40°N, 150–180°E), southwest (SW, 0–20°N, 90–150°E) and southeast (SE, 0–20°N, 150–180°E). TCG density is calculated at each grid point as the number of TCG events over an area defined by a  $10^{\circ} \times 10^{\circ}$  box around the grid point, per season.

The regional large-scale circulation in MetUM is shown in Figure 1b. Although MetUM captures the typical features of the WNPSM system, there are significant biases (Figure 1c). The most pronounced bias is a weaker NPSH and a northward displaced MT. The 500hPa geopotential height (GPH) between 10–30°N is 10–20m lower than in ERA5. This is accompanied by an anomalously cyclonic circulation in the lower troposphere, with westerly anomalies towards east of the Philippines and easterly anomalies towards south Japan and north China. In MetUM, other environmental conditions, e.g., RV, VWS and RH, are also biased (Figure S2-3). The causality between biases in the large-scale circulation and local conditions is not straightforward. We focus on large-scale circulation as it provides a more complete picture of environment.

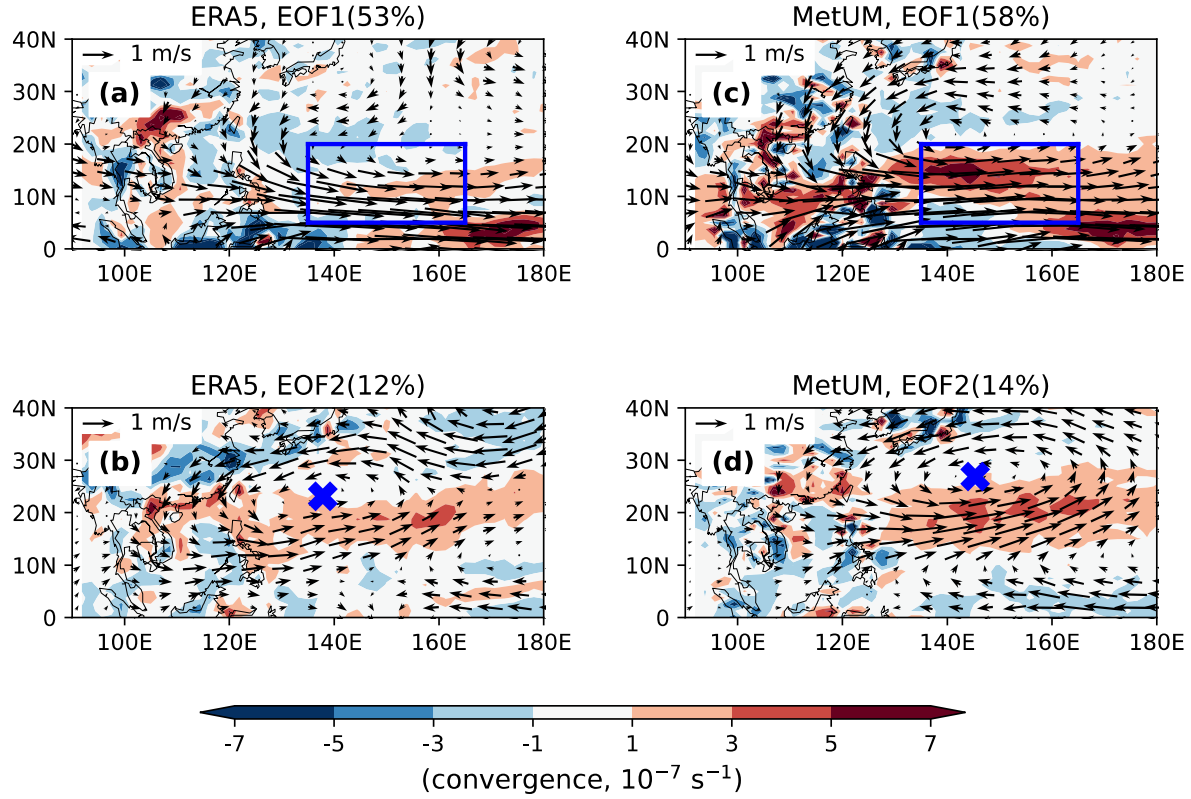
The MetUM simulates the expected zonal distribution of TCG, with most forming east of the Philippines (Figure 1b). TCG is overestimated in the poleward flank of the MDR (10–30°N), and slightly underestimated in the equatorward flank (0–10°N) (Figure 1d). The bias is also associated with a significantly northward shift of TCG. MetUM has the largest number of TCG at 15°N, which is about 5° further north than that in ERA5 (Figure S4). This indicates that the frequency and position of TCG are both biased. The basin-wide frequency of TCG is overestimated by ~6 TCs/season.

### 3.2 Decomposition of large-scale wind circulations

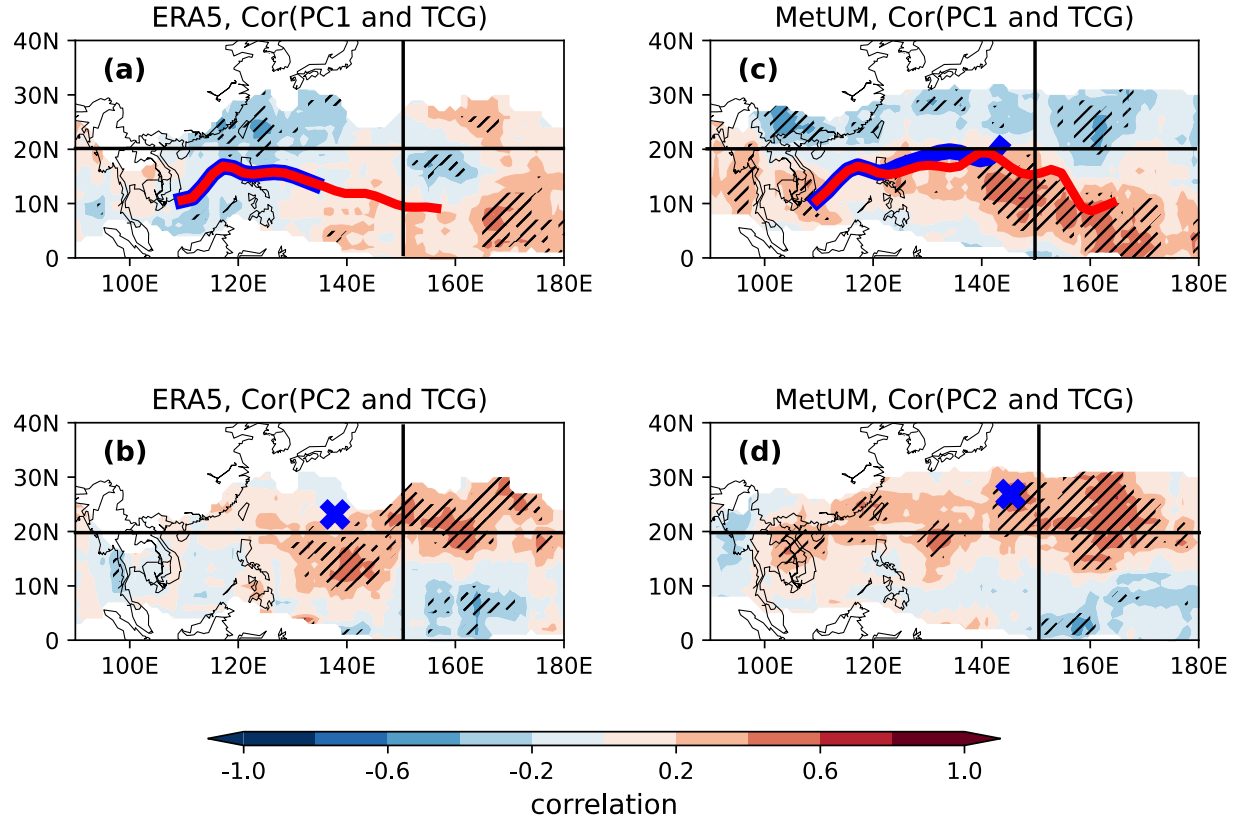
#### **ERA5**

Figure 2a shows the first leading EOF (EOF1) of 850hPa wind variations in ERA5 over 1979–2014. EOF1 explains 53% of the variance. In the positive phase, it is characterised by lower-tropospheric westerlies in the western and central tropical Pacific. EOF1 is associated with anomalous convergence in the central Pacific and divergence in the western Pacific. EOF1 is also related to a zonal dipole structure in the upper tropospheric winds, middle-level RH and VWS (Figure S5), resembling an El Niño phase. In the positive phase, the environmental conditions are associated with an eastward displacement of the MT, suppressing TCG occurrence in the western sector (100–140°E) and favouring it the eastern sector (140–180°E) (Figure 3a). We confirm that EOF1 represents the zonal migration of the MT, with  $r=0.94$  between PC1 and the MT index (Table S1). Thus, EOF1 has a longitudinal seesaw effect on regional TCG frequency within the basin, i.e., EOF1 determines the spatial distribution of WNP TCG. There is no significant correlation between the basin-wide TCG frequency and PC1 (Figure 4a).

The second mode (EOF2) accounts for 12% of the variance. EOF2 is highlighted with a lower-tropospheric cyclonic circulation in the centre of the basin (10–30°N and 120–160°E) (Figure 2b). EOF2 is related to meridional dipole-like variations in environment conditions. In the positive phase, there is anomalous convergence in the equatorward flank of the circulation and divergence in the poleward flank. EOF2-associated meridional variations are also seen in upper-level convergence, RH and VWS (Figure S6). EOF2 has a strong positive impact on TCG in the northern part of the MDR, where most TCG events occur, and a weak negative impact in the southeast sector (Figure 3b). PC2 has a significant correlation with the basin-wide TCG frequency ( $r=0.49$ ; Figure 4b). EOF2 resembles the dynamical features associated with a strengthening of the East Asian summer monsoon (Wang and Fan, 1999; Wang et al., 2001; Vega et al., 2018). Thus, PC2 is significantly correlated with the NPSH index, with  $r=-0.61$ . However, the basin-wide TCG frequency has a stronger correlation with PC2 than with the NPSH, suggesting that PC2 is a better descriptor for the basin-wide frequency.

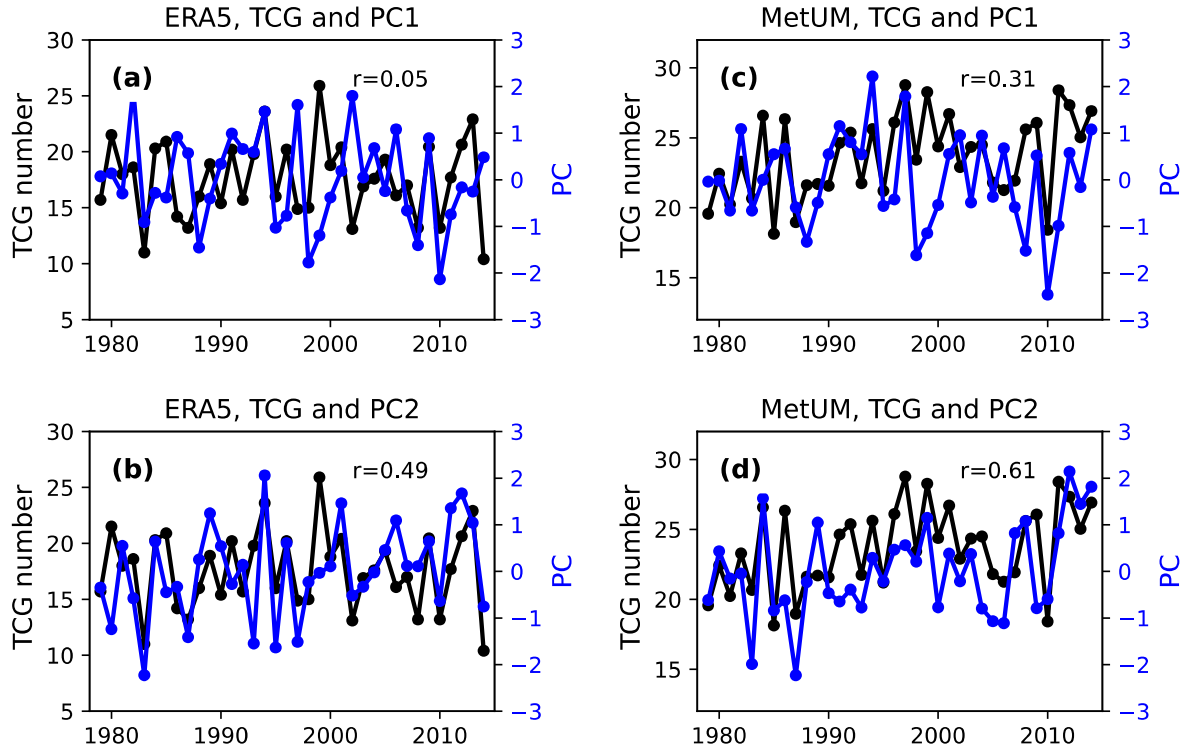


**Figure 2.** (a,b) EOF1 and EOF2 (vectors) of 850hPa horizontal winds in the WNP, over 1979–2014 in ERA5. (c,d) as (a,b), but for EOFs in MetUM. Shading is for convergence/divergence derived from the EOF wind patterns. Percentage of the variance explained by each EOF is provided at the top. In (a,c), the blue box shows the region used to define the MT index. In (b,d), the blue cross indicates the central position of the wind circulation (maximum relative vorticity).



**Figure 3.** (a) Correlation between TCG density and PC1 of WNP 850hPa horizontal winds, over 1979–2014 in ERA5. (b) as (a), but for correlation with PC2. (c,d) as (a,b), but for MetUM. Hatched areas show significant correlations at 95% confidence level. TCG density is calculated at each grid point as the number of TCG events over an area defined by a  $10^\circ \times 10^\circ$  box around the grid point, per season. In (a,c), the red and blue lines represent the MT position in the positive and negative phases of EOF1, respectively; the MT position is defined by the maximum 850hPa relative vorticity. In (b,d), the blue cross indicates the central position of the wind circulation (maximum relative vorticity). The basin is divided into four sectors as defined in Figure 1d.





**Figure 4.** (a, b) Timeseries of PC1 and PC2 (blue line) of WNP 850hPa horizontal winds, and the basin-wide TCG frequency (black line) over 1979–2014 in ERA5. (c,d) as (a,b), but for MetUM. Correlation between PC and TCG timeseries is provided in the top right.

### **MetUM**

In MetUM, the first two EOFs explain 58% and 14% of the variance in 850hPa winds (Figure 2c-d), respectively. Compared to ERA5, in the positive phase, EOF1 in MetUM has much stronger westerly winds in a wider tropical belt (0–20°N) and has an enhanced cyclonic circulation in the subtropics (20–40°N). This corresponds to an overestimated low-level convergence across the tropical belt with an equatorward tilt with longitude. We further find that in MetUM EOF1 is related to an anomalously closed vertical circulation cell within the tropics (Figure S7). This implies that the strengthened westerly winds in the tropics and the enhanced cyclonic circulation in the subtropics are dynamically organised.

In MetUM, the strengthened and meridionally expanded westerlies in the tropics shift the MT position further north (Figure 3c). Consequently, in the positive phase of EOF1, TCG frequency is overestimated in the south sectors of the basin. In MetUM, related to the position bias of the MT, the positive effect of EOF1 on regional TCG becomes dominant, causing a significant correlation between the basin-wide TCG and PC1 ( $r=0.31$ ; Figure 4c). In contrast, there is no such basin-wide relationship in ERA5 (Figure 4a).

Although MetUM reasonably simulates EOF2 (Figure 2b,d), there are discrepancies. First, in the southern flank of the circulation, zonal wind anomalies are larger than expected, leading to stronger local convergence. Secondly, the centroid of the subtropical circulation shifts north-eastward by 5° (geographic units). Third, EOF2 in MetUM has a closer link to zonal winds

of the central equatorial Pacific (140–180°E, 10°S–10°N). This easterly anomaly could transport more moist air to the southern flank of the circulation. This unrealistic tropics-subtropics connection is elucidated by an anomalously vertical circulation cell with ascent in the north and descent in the south in the positive phase of EOF2 (Figure S7). In contrast, in ERA5 EOF2 has much less link to the circulation to the south (20°N–20°S; Figure S6a-b). All these point that EOF2 and associated NPSH variations are much stronger in MetUM than in ERA5. Because TCG occurs mostly in the southern flank of EOF2, the positive correlations between PC2 and regional TCG are reasonably simulated (Figure 3b,d). The correlation between the basin-wide TCG frequency and PC2 is slightly higher ( $r=0.61$ ) than that in ERA5 ( $r=0.49$ ; Figure 4b,d).

#### 4. Discussion

Here, we utilize the circulation mode-TCG relationships gained from the above results to paint a picture of the long-term bias in MetUM.

In ERA5, EOF1 only affects regional TCG (Figure 4). However, The MetUM has a much stronger EOF1 circulation regime with a north-eastward shifted MT (Figure 3). This biased EOF1 can affect TCG in a large domain and exert a stronger control over the basin-wide TCG frequency (Figure 4). Because the climatological mean wind circulation is biased towards the positive phase of MetUM EOF1 throughout the whole period (Figure 1), the increase of MetUM TCG frequency in the whole basin is mostly related to an EOF1-type wind bias. In ERA5, EOF2 dominates the basin-wide TCG frequency, confirming the results of Wang and Wang (2019). In MetUM, because this mode shifts north-eastward and is stronger, its effect on the basin-wide frequency becomes stronger (Table S1). Thus, the EOF2-type wind bias plays a secondary role in the basin-wide TCG bias. In short, the two EOF-type wind biases contribute to the TCG bias by altering both the TCG location and the basin-wide frequency.

Regional TCG bias is caused by inaccurate simulations of both the position and frequency of TCG. We relate it to different combinations of biased wind patterns. The most noticeable bias in TCG (Figure 1d) is an overestimation in the west quadrants. The bias in the southwest sector resembles the positively biased EOF1-TCG relationship in MetUM (Figure 3a,c), driven by the northward shift and strengthening of the MT. MetUM has a significant westerly wind bias in this sector (Figure 1c). Thus, the TCG bias in the southwest is mainly caused by the EOF1-type westerly wind bias. The TCG bias in the northwest sector resembles the biased EOF2-TCG relationship. In this sector, TCG in MetUM has biased positive correlations with EOF2 and has expected correlations with EOF1. Thus, the TCG bias in the northwest is attributed to the EOF2-type wind bias depicted by a weakened NPSH.

In the northeast quadrant, a northward shifted and strengthening EOF2 leads to an increase of TCG in the northeast (Figure 3c-d). In contrast, a shifted and strengthening wind pattern resembling EOF1 suppresses TCG in the northeast sector (Figure 3a-b), and this counteracts the positive contribution of the EOF2-type bias. In this quadrant, as the TCG bias is positive, the EOF2-type wind circulation bias plays a dominant role. The TCG bias in the southeast quadrant shows the same pattern as in the EOF2-TCG correlation. This suggests that this TCG bias is related to an enhanced EOF2-type circulation pattern.

Here, we emphasise other implications of the EOF analysis approach, which help understand the model performance. First, in MetUM, the two leading modes of regional winds

have an unrealistically merged relationship with the MT and NPSH indices, compared to those in ERA5 (Table S1). In ERA5, the MT and NPSH indices are clearly separated and preferentially related to PC1 and PC2, respectively. But, in MetUM, PC1 is strongly correlated with both the MT ( $r=0.84$ ) and NPSH ( $r=-0.64$ ) indices, and PC2 is weakly correlated with these two indices ( $r=-0.43$ ). This mixed relationship is related to the enhanced tropics-subtropics connections both vertically and horizontally in MetUM (Figures S5-7), which damp the expected distinction of these two indices.

Furthermore, in ERA5, both modes are significantly correlated with the WNPSM index ( $r=0.64$  and  $0.60$ , respectively; Table S1), making them good proxies to the WNPSM. However, in MetUM, the WNPSM index has significant correlation only with PC1 ( $r=0.86$ ). This discrepancy implies that the WNPSM index cannot capture the features of the simulated WNPSM system. Instead, the regional boxes used to define the index should perhaps be relocated to reflect the model bias.

Secondly, the EOF analysis approach can better reveal the erroneous relationship between the basin-wide TCG frequency and wind circulations in models than just using circulation indices (Table S1). Because in MetUM the circulation indices cannot capture the variability of the WNPSM system, the relationships between basin-wide TCG frequency and these indices in models become misleading in understanding the role of regional circulations in TCG. For example, the correlations between TCG frequency and these indices in MetUM are identical to those in ERA5. This does not necessarily mean that the large-scale relationship is accurately simulated in the model. Instead, in the EOF method, comparing the model to ERA5, the PC values have distinct relationships with the TCG frequency, clearly indicating misrepresented relationships between basin-wide TCG and wind circulations.

Finally, the EOF approach can further point out the possible factors causing the errors in large-scale circulation. The EOF analysis partitions the WNPSM system into a tropics-oriented regime (EOF1) and a subtropics-oriented regime (EOF2). In MetUM, both modes have an overly strong tropics-subtropics connection, horizontally and vertically (Figures S5-7). This connection can be further related to a biased local Hadley circulation. As the methodology could also be applied monthly, it is interesting to know how the TCG–circulation relationship varies with seasonality (Feng et al., 2021). This type of analysis readily and objectively identifies key factors which can inform further model development.

The biases in the circulation and the subtropical high in MetUM could be caused by e.g., air-sea interactions, unresolved convection, and coupling between convection and large-scale circulation (Rodriguez et al., 2017; Feng et al., 2019; Martin et al., 2021). A new subgrid parametrization scheme for convection or the convection-resolving simulations (Hanley et al., 2019; Rooney et al., 2022) may reduce such biases. Therefore, the EOF diagnostic tool can be used to trace the progress made by any model improvements. Nevertheless, some biases are always expected in any model and the purpose of this paper is to propose a diagnostic tool that continues to be helpful. The relationship between the biased circulations and biased local environments is not straightforward. But the EOF analysis is beneficial as it well explains TCG with a more complete picture of large-scale modes. In contrast, local environments, including the genesis potential index, have difficulty in explaining regional TCG in both observations and models (Menkes et al., 2012; Cavicchia et al., 2023).

## 5. Conclusions

By decomposing the wind circulations in the WNP using the multivariate EOFs, we gain a better understanding of model bias of TCG. Two main circulation patterns explain the regional and basin-wide frequency of WNP TCG in ERA5 and the MetUM simulations. The first circulation pattern, which is typically depicted by westerly wind anomalies in the western tropical Pacific, favours TCG in the southeast sector of the MDR and suppresses in the northwest. The second circulation pattern, which is associated with the strength of the North Pacific subtropical high, encourages TCG on the poleward side of the MDR. We confirmed that in ERA5 the second pattern dominates the basin-wide TCG frequency.

The long-term bias of wind circulation resembles the positive phase of these two EOF patterns in MetUM, characterised by an anomalous cyclonic circulation and a weakened subtropical high. We found that the mean state of local and remote circulation is biased towards favourable conditions for TCG frequency in both the northern and southern flanks of the MDR, related to two distinct modes of bias. The TCG bias in both basin-wide and regional scales is a combination of these two biased circulation patterns, associated with overly strong tropics-subtropics connections. The credibility of models in TCG mean state closely relies on how well the models simulate these distinct wind circulation patterns both in the position and strength. This EOF-based analytical approach can trace the sources of model genesis bias more clearly back to regional large-scale wind circulation. It could be applied to other GCMs and basins.

## Acknowledgments

R.T. and X.F. were supported by the Singapore Green Finance Centre. X.F. and K.I.H. were supported by the UK Met Office Weather and Climate Science for Service Partnership for Southeast Asia (H5480800, H5525000), as part of the Newton Fund. X.F. was also supported by the National Centre for Atmospheric Science through the NERC National Capability International Programmes Award (NE/X006263/1).

## Open Research

The ERA5 data used in this study are generated by ECMWF and distributed by Copernicus Climate Change Service (C3S) Climate Data Store (CDS) (DOI: <https://doi.org/10.24381/cds.bd0915c6>). The MetUM climate simulations (HadGEM3-GA7.1) used in this study are obtained from the HighResMIP project (<https://hrcm.ceda.ac.uk/research/cmip6-highresmip/>). Both datasets are available with open access. The code for tropical cyclone identification is available from <https://doi.org/10.5281/zenodo.7890852>. Computing and data storage facilities were provided by JASMIN (<https://jasmin.ac.uk>).

## References

Bengtsson, L., Botzet, M., & Esch, M. (1995). Hurricane-type vortices in a general circulation model. *Tellus A*, 47(2), 175-196.

- Bourdin, S., Fromang, S., Dulac, W., Cattiaux, J., & Chauvin, F. (2022). Intercomparison of four algorithms for detecting tropical cyclones using ERA5. *Geoscientific Model Development*, 15(17), 6759-6786.
- Bowler, N. E., Arribas, A., Beare, S. E., Mylne, K. R., & Shutts, G. J. (2009). The local ETKF and SKEB: Upgrades to the MOGREPS short-range ensemble prediction system. *Quarterly Journal of the Royal Meteorological Society: A journal of the atmospheric sciences, applied meteorology and physical oceanography*, 135(640), 767-776.
- Bush, S. J., Turner, A. G., Woolnough, S. J., Martin, G. M., & Klingaman, N. P. (2015). The effect of increased convective entrainment on Asian monsoon biases in the MetUM general circulation model. *Quarterly Journal of the Royal Meteorological Society*, 141(686), 311-326.
- Camp, J., Roberts, M., MacLachlan, C., Wallace, E., Hermanson, L., Brookshaw, A., ... & Scaife, A. A. (2015). Seasonal forecasting of tropical storms using the Met Office GloSea5 seasonal forecast system. *Quarterly Journal of the Royal Meteorological Society*, 141(691), 2206-2219.
- Cavicchia, L., Scoccimarro, E., Ascenso, G., Castelletti, A., Giuliani, M., & Gualdi, S. (2023). Tropical Cyclone Genesis Potential Indices in a New High-Resolution Climate Models Ensemble: Limitations and Way Forward. *Geophysical Research Letters*, 50(11), e2023GL103001.
- Feng, X., Klingaman, N. P., & Hodges, K. I. (2019). The effect of atmosphere–ocean coupling on the prediction of 2016 western North Pacific tropical cyclones. *Quarterly Journal of the Royal Meteorological Society*, 145(723), 2425-2444.
- Feng, X., Klingaman, N. P., Hodges, K. I., & Guo, Y. P. (2020). Western North Pacific tropical cyclones in the Met office global seasonal forecast system: performance and ENSO teleconnections. *Journal of Climate*, 33(24), 10489-10504.
- Feng, X., Klingaman, N. P., & Hodges, K. I. (2021). Poleward migration of western North Pacific tropical cyclones related to changes in cyclone seasonality. *Nature communications*, 12(1), 6210.
- Feng, X., Hodges, K. I., Hoang, L., Pura, A. G., Yang, G. Y., Luu, H., ... & Guo, Y. P. (2022). A new approach to skillful seasonal prediction of Southeast Asia tropical cyclone occurrence. *Journal of Geophysical Research: Atmospheres*, 127(12), e2022JD036439.
- Feng, X., & Wu, L. (2022). Roles of interdecadal variability of the western North Pacific monsoon trough in shifting tropical cyclone formation. *Climate Dynamics*, 1-9.
- Gu, Y., Wu, L., Zhan, R., & Wen, Z. (2022). Climatology of developing and nondeveloping disturbances for tropical cyclone genesis over the western North Pacific. *Terrestrial, Atmospheric and Oceanic Sciences*, 33(1), 13.
- Haarsma, R. J., Roberts, M. J., Vidale, P. L., Senior, C. A., Bellucci, A., Bao, Q., ... & von Storch, J. S. (2016). High resolution model intercomparison project (HighResMIP v1. 0) for CMIP6. *Geoscientific Model Development*, 9(11), 4185-4208.
- Hanley, K., Whittall, M., Stirling, A., & Clark, P. (2019). Modifications to the representation of subgrid mixing in kilometre-scale versions of the Unified Model. *Quarterly Journal of the Royal Meteorological Society*, 145(725), 3361-3375.

- Hersbach, H., Bell, B., Berrisford, P., Hirahara, S., Horányi, A., Muñoz-Sabater, J., ... & Thépaut, J. N. (2020). The ERA5 global reanalysis. *Quarterly Journal of the Royal Meteorological Society*, 146(730), 1999-2049.
- Hodges, K., Cobb, A., & Vidale, P. L. (2017). How well are tropical cyclones represented in reanalysis datasets?. *Journal of Climate*, 30(14), 5243-5264.
- Hsu, W. C., Patricola, C. M., & Chang, P. (2019). The impact of climate model sea surface temperature biases on tropical cyclone simulations. *Climate Dynamics*, 53, 173-192.
- Lander, M., & Holland, G. J. (1993). On the interaction of tropical-cyclone-scale vortices. I: Observations. *Quarterly Journal of the Royal Meteorological Society*, 119(514), 1347-1361.
- Liang, Y. C., Mazloff, M. R., Rosso, I., Fang, S. W., & Yu, J. Y. (2018). A multivariate empirical orthogonal function method to construct nitrate maps in the Southern Ocean. *Journal of Atmospheric and Oceanic Technology*, 35(7), 1505-1519.
- Martin, G. M., Levine, R. C., Rodriguez, J. M., & Vellinga, M. (2021). Understanding the development of systematic errors in the Asian summer monsoon. *Geoscientific Model Development*, 14(2), 1007-1035.
- Menkes, C. E., Lengaigne, M., Marchesiello, P., Jourdain, N. C., Vincent, E. M., Lefèvre, J., ... & Royer, J. F. (2012). Comparison of tropical cyclogenesis indices on seasonal to interannual timescales. *Climate dynamics*, 38, 301-321.
- Ritchie, E. A., & Holland, G. J. (1999). Large-scale patterns associated with tropical cyclogenesis in the western Pacific. *Monthly Weather Review*, 127(9), 2027-2043.
- Roberts, M. J., Camp, J., Seddon, J., Vidale, P. L., Hodges, K., Vannière, B., ... & Wu, L. (2020a). Projected future changes in tropical cyclones using the CMIP6 HighResMIP multimodel ensemble. *Geophysical research letters*, 47(14), e2020GL088662.
- Roberts, M. J., Camp, J., Seddon, J., Vidale, P. L., Hodges, K., Vanniere, B., ... & Ullrich, P. (2020b). Impact of model resolution on tropical cyclone simulation using the HighResMIP–PRIMAVERA multimodel ensemble. *Journal of Climate*, 33(7), 2557-2583.
- Roberts, M. J., Vidale, P. L., Mizielinski, M. S., Demory, M. E., Schiemann, R., Strachan, J., ... & Camp, J. (2015). Tropical cyclones in the UPSCALE ensemble of high-resolution global climate models. *Journal of Climate*, 28(2), 574-596.
- Roberts, M. J., Baker, A., Blockley, E. W., Calvert, D., Coward, A., Hewitt, H. T., ... & Vidale, P. L. (2019). Description of the resolution hierarchy of the global coupled HadGEM3-GC3. 1 model as used in CMIP6 HighResMIP experiments. *Geoscientific Model Development*, 12(12), 4999-5028.
- Rodríguez, J. M., Milton, S. F., & Marzin, C. (2017). The East Asian atmospheric water cycle and monsoon circulation in the Met Office Unified Model. *Journal of Geophysical Research: Atmospheres*, 122(19), 10-246.
- Rooney, G. G., Stirling, A. J., Stratton, R. A., & Whittall, M. (2022). C-POOL: A scheme for modelling convective cold pools in the Met Office Unified Model. *Quarterly Journal of the Royal Meteorological Society*, 148(743), 962-980.

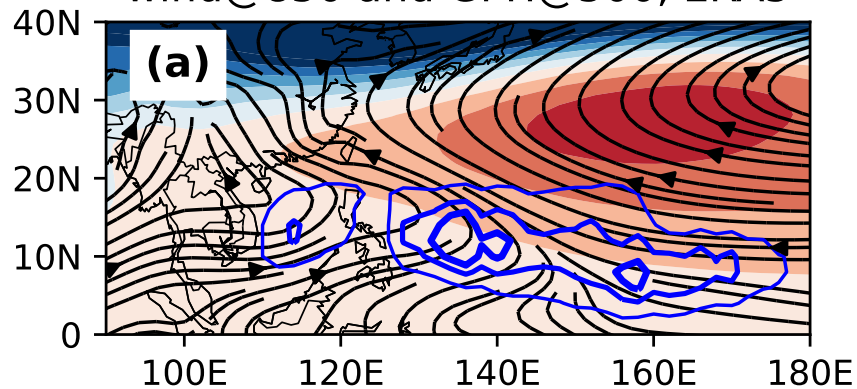
- Stansfield, A. M., Reed, K. A., Zarzycki, C. M., Ullrich, P. A., & Chavas, D. R. (2020). Assessing tropical cyclones' contribution to precipitation over the eastern United States and sensitivity to the variable-resolution domain extent. *Journal of Hydrometeorology*, 21(7), 1425-1445.
- Vecchi, G. A., Delworth, T., Gudgel, R., Kapnick, S., Rosati, A., Wittenberg, A. T., ... & Zhang, S. (2014). On the seasonal forecasting of regional tropical cyclone activity. *Journal of Climate*, 27(21), 7994-8016.
- Vega, I., Gallego, D., Ribera, P., de Paula Gómez-Delgado, F., García-Herrera, R., & Peña-Ortiz, C. (2018). Reconstructing the western North Pacific summer monsoon since the late nineteenth century. *Journal of Climate*, 31(1), 355-368.
- Vidale, P. L., Hodges, K., Vannière, B., Davini, P., Roberts, M. J., Strommen, K., ... & Corti, S. (2021). Impact of stochastic physics and model resolution on the simulation of tropical cyclones in climate GCMs. *Journal of Climate*, 34(11), 4315-4341.
- Wang, B., & Fan, Z. (1999). Choice of South Asian summer monsoon indices. *Bulletin of the American Meteorological Society*, 80(4), 629-638.
- Wang, B., Wu, R., & Lau, K. M. (2001). Interannual variability of the Asian summer monsoon: Contrasts between the Indian and the western North Pacific–East Asian monsoons. *Journal of climate*, 14(20), 4073-4090.
- Wang, B., Xiang, B., & Lee, J. Y. (2013). Subtropical high predictability establishes a promising way for monsoon and tropical storm predictions. *Proceedings of the National Academy of Sciences*, 110(8), 2718-2722.
- Wang, C., & Wu, L. (2018). Future changes of the monsoon trough: Sensitivity to sea surface temperature gradient and implications for tropical cyclone activity. *Earth's Future*, 6(6), 919-936.
- Wang, L. (2017). Tropical cyclogenesis associated with four types of summer monsoon circulation over the South China Sea. *International Journal of Climatology*, 37(11), 4229-4236.
- Wang, C., & Wang, B. (2019). Tropical cyclone predictability shaped by western Pacific subtropical high: integration of trans-basin sea surface temperature effects. *Climate Dynamics*, 53(5-6), 2697-2714.
- Wang, Q., Kieu, C., and Vu, T.A. (2019). Large-scale dynamics of tropical cyclone formation associated with ITCZ breakdown, *Atmos. Chem. Phys.*, 19, 8383–8397.
- Wang, Z. Q., Chen, G. H., & Zhao, Y. H. (2022). Clustering of large-scale circulation patterns during tropical cyclone preformation period using self-organizing maps. *International Journal of Climatology*, 42(13), 7013-7027.
- Wheeler, M. C., & Hendon, H. H. (2004). An all-season real-time multivariate MJO index: Development of an index for monitoring and prediction. *Monthly weather review*, 132(8), 1917-1932.
- Williams, K. D., Copsey, D., Blockley, E. W., Bodas-Salcedo, A., Calvert, D., Comer, R., ... & Xavier, P. K. (2018). The Met Office global coupled model 3.0 and 3.1 (GC3.0 and GC3.1) configurations. *Journal of Advances in Modeling Earth Systems*, 10(2), 357-380.

Wu, L., Wen, Z., Huang, R., & Wu, R. (2012). Possible linkage between the monsoon trough variability and the tropical cyclone activity over the western North Pacific. *Monthly Weather Review*, *140*(1), 140-150.

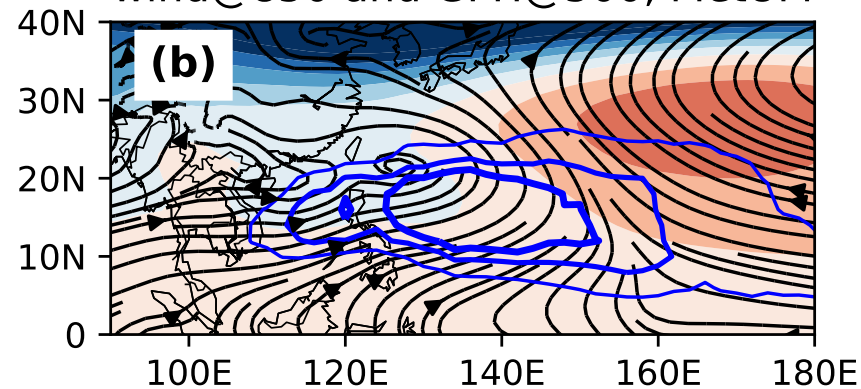


Figure 1.

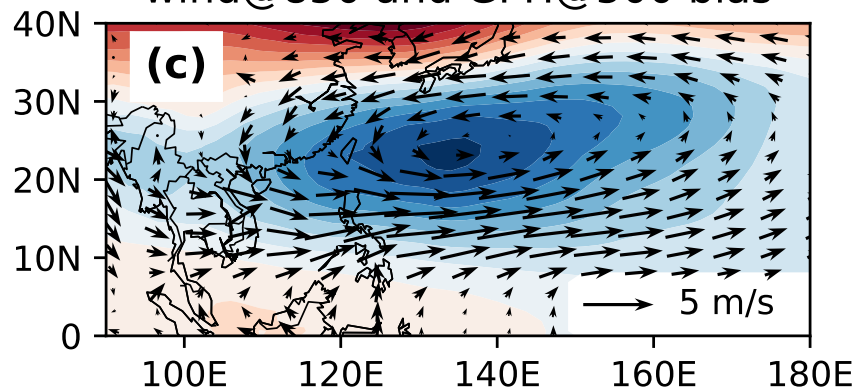
wind@850 and GPH@500, ERA5



wind@850 and GPH@500, MetUM



wind@850 and GPH@500 bias



TCG bias

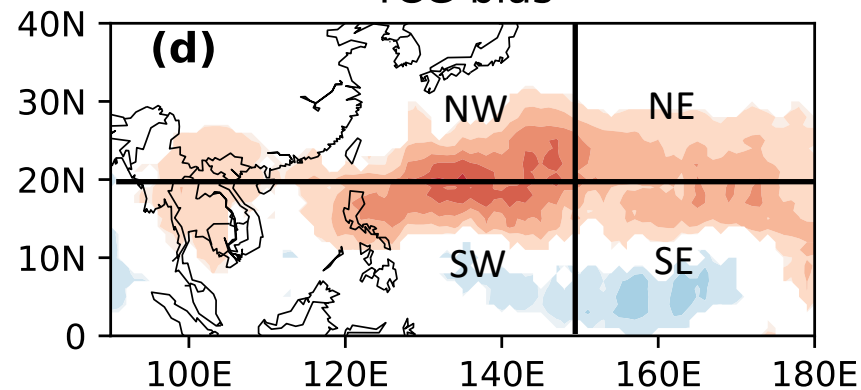
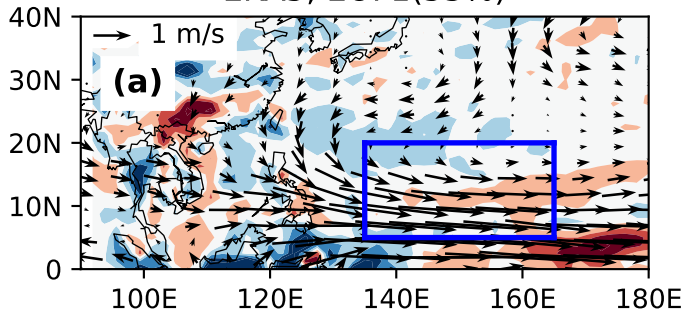
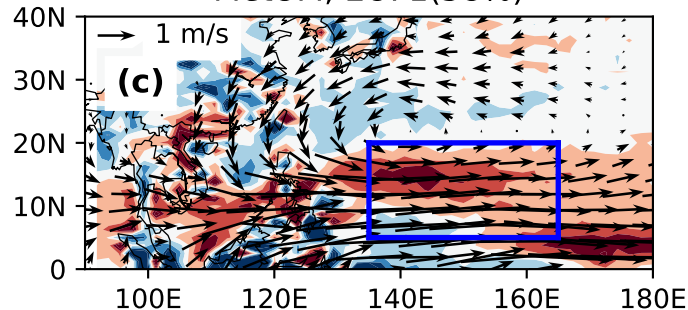


Figure 2.

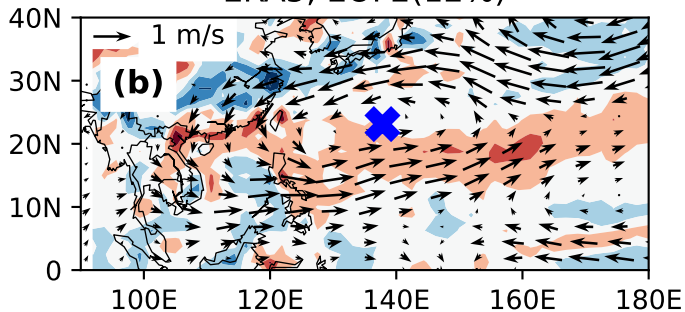
ERA5, EOF1(53%)



MetUM, EOF1(58%)



ERA5, EOF2(12%)



MetUM, EOF2(14%)

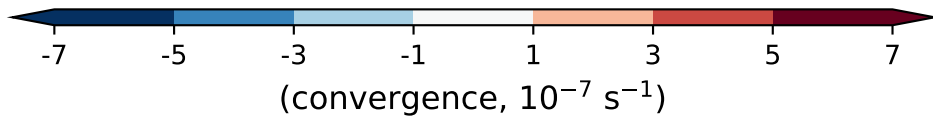
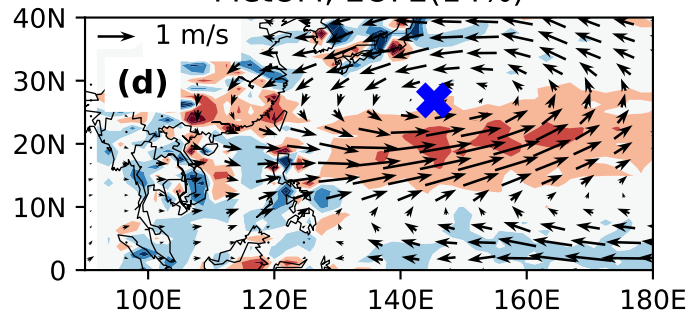
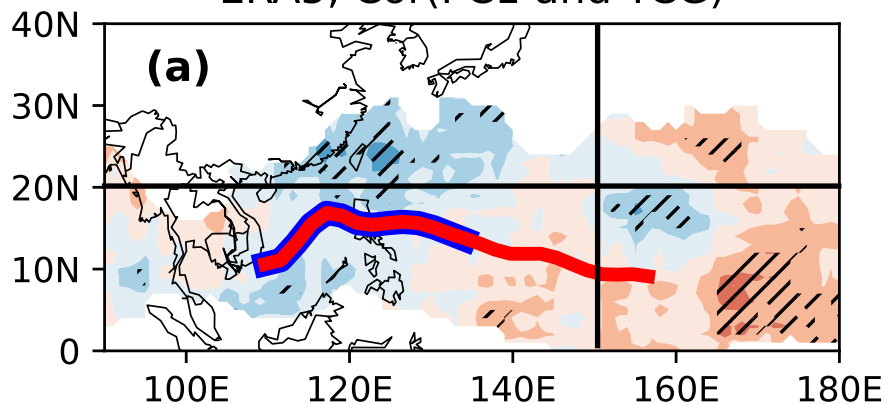
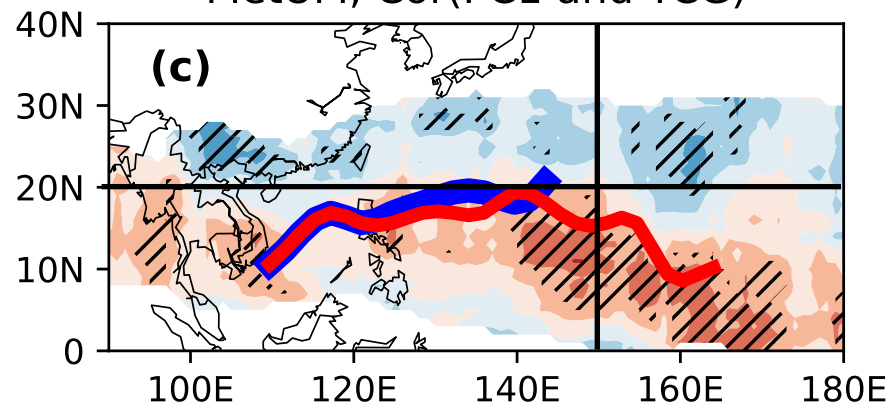


Figure 3.

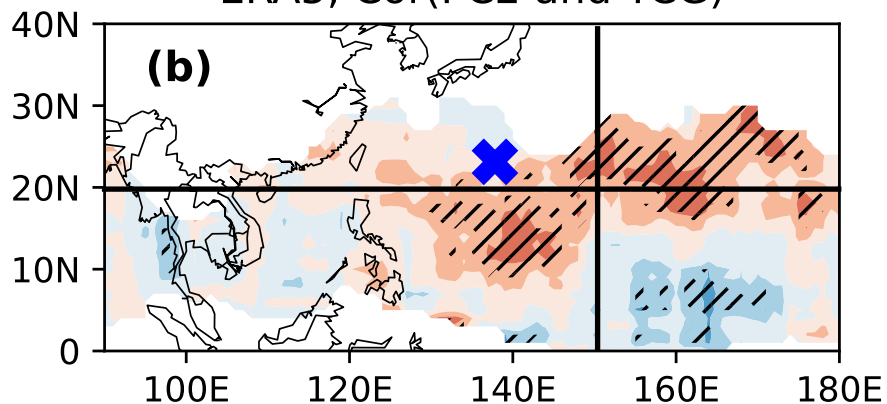
ERA5, Cor(PC1 and TCG)



MetUM, Cor(PC1 and TCG)



ERA5, Cor(PC2 and TCG)



MetUM, Cor(PC2 and TCG)

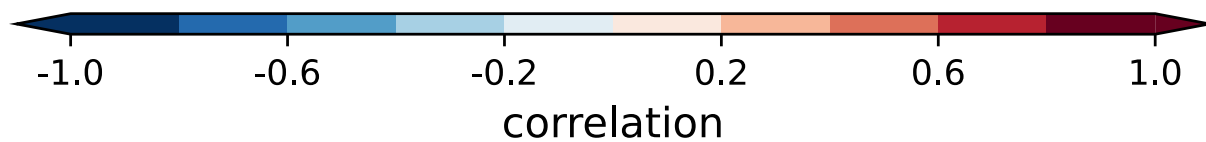
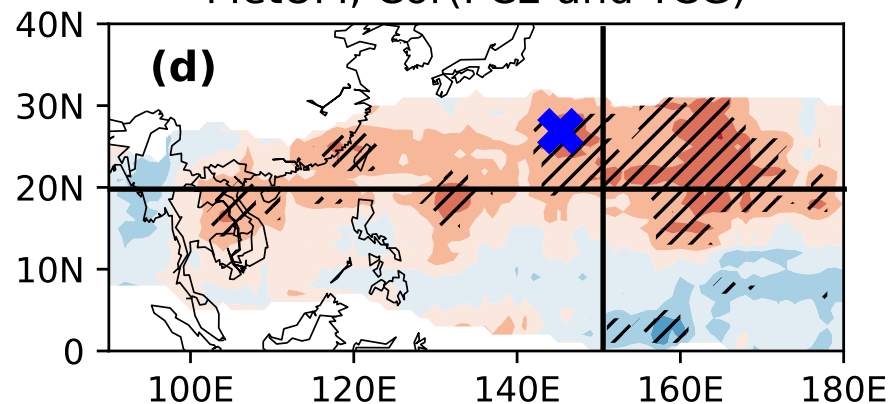
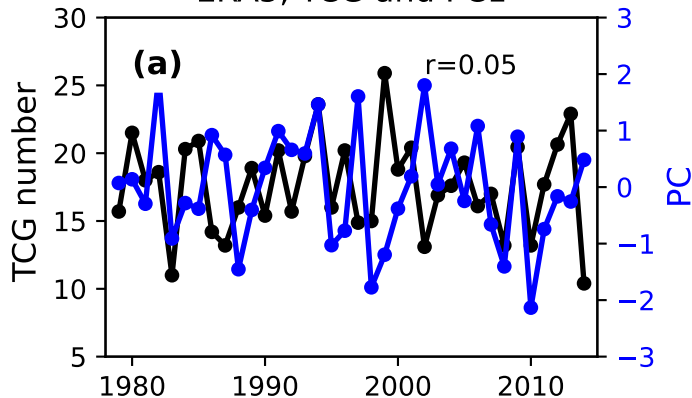
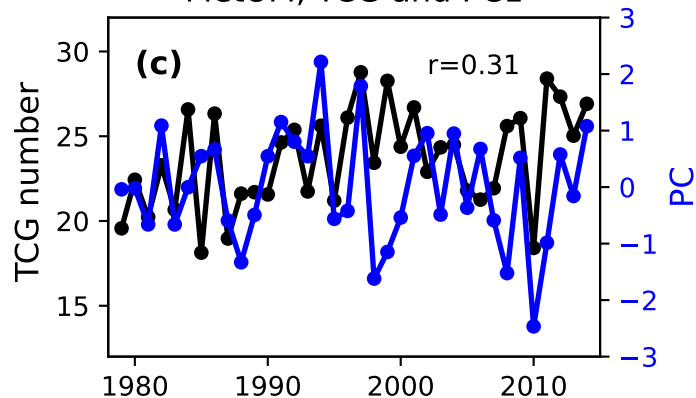


Figure 4.

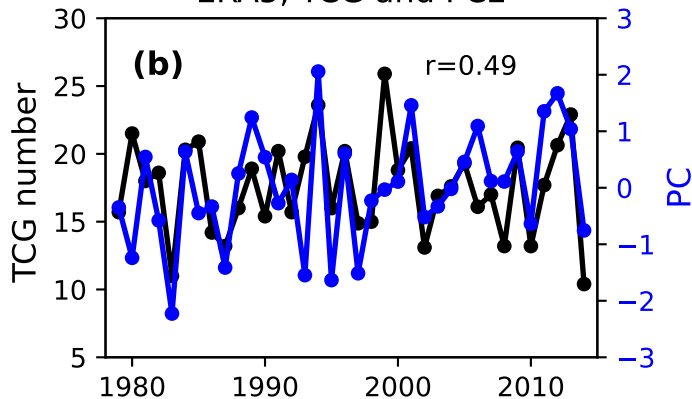
ERA5, TCG and PC1



MetUM, TCG and PC1



ERA5, TCG and PC2



MetUM, TCG and PC2

