

# Hydraulic Fracturing-driven Infrasonic Signals – A New Class of Signal for Subsurface Engineering

Aditya Chakravarty<sup>1</sup>, Jordan Stenftenagel<sup>1</sup>, Kan Wu<sup>1</sup>, Benchun Duan<sup>2</sup>, Siddharth Misra<sup>1,2</sup>

<sup>1</sup> Dept of Petroleum Engineering, Texas A&M University

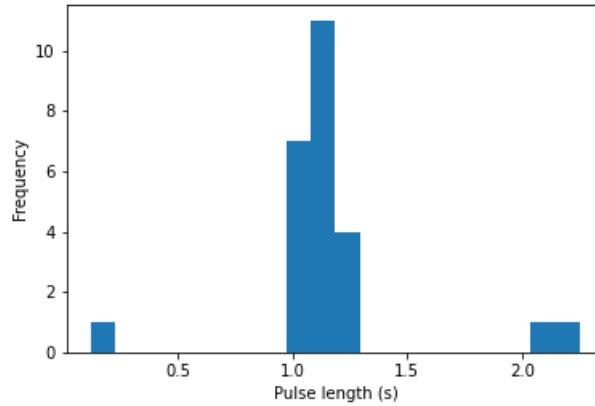
<sup>2</sup> Dept of Geology and Geophysics, Texas A&M University

Corresponding author: Aditya Chakravarty ([aditya.chakravarty@tamu.edu](mailto:aditya.chakravarty@tamu.edu))

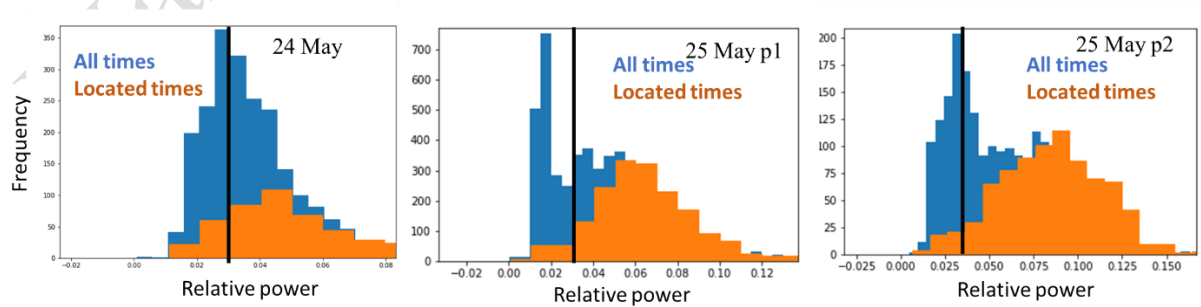
## Contents of this file

Text S1 to S7

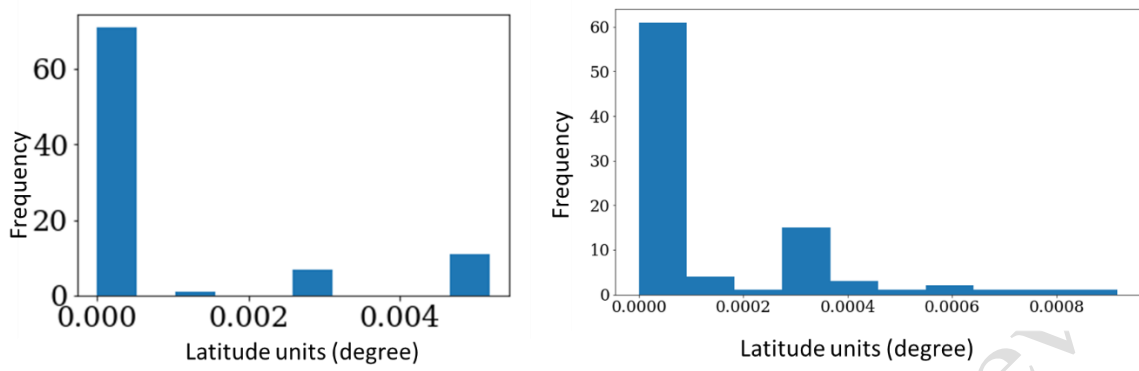
Tables S1



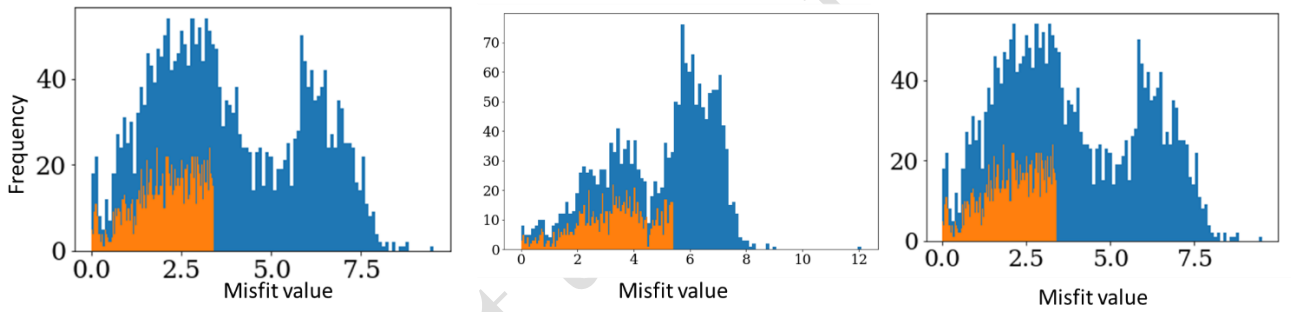
**Figure S1:** Histogram of infrasound pulse durations for 24 May hydrophone OT-03 (sampling rate = 200 Hz) obtained by applying STA LTA filter (short window = 300 pts, long window = 3000 pts)



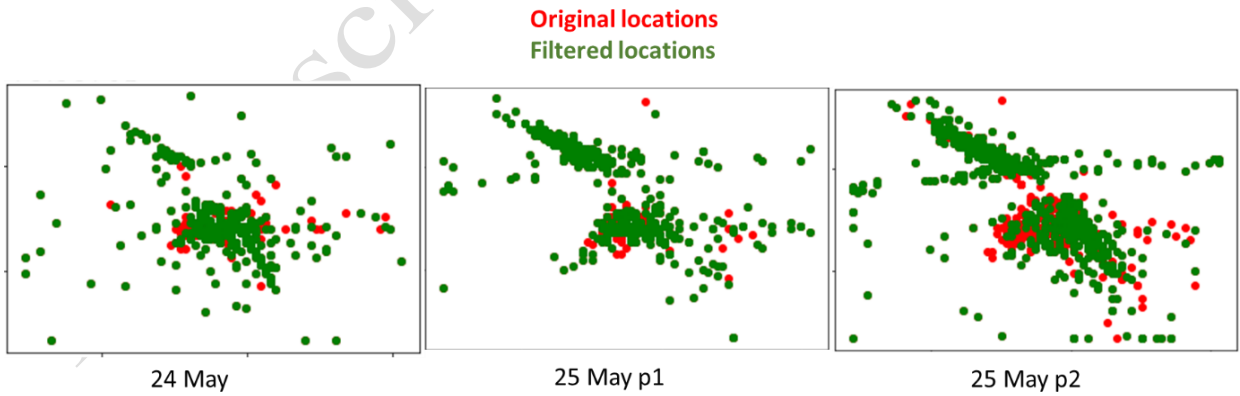
**Figure S2:** Histogram of beam power values showing variation of power values between located times (orange) and all data (blue). A threshold of 0.3 is determined as the beam power noise floor.



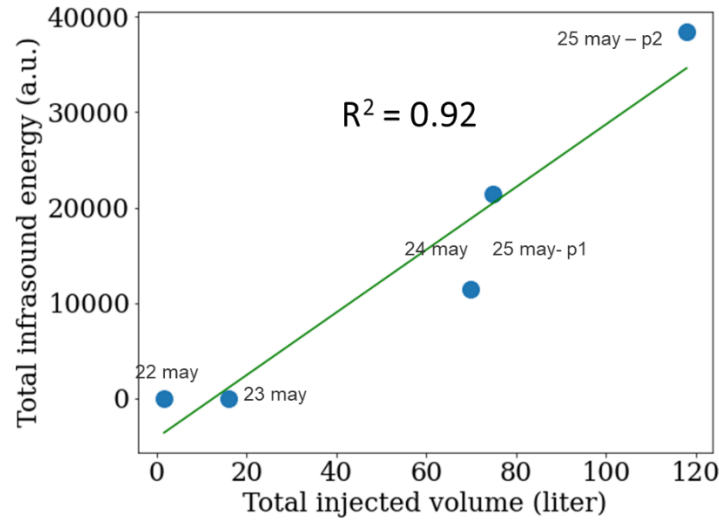
**Figure S3:** Horizontal scattering obtained from station bootstrapping, shown here for 24 May (left) and 25 May p1 (right). The highest 10% of scattered values are discarded.



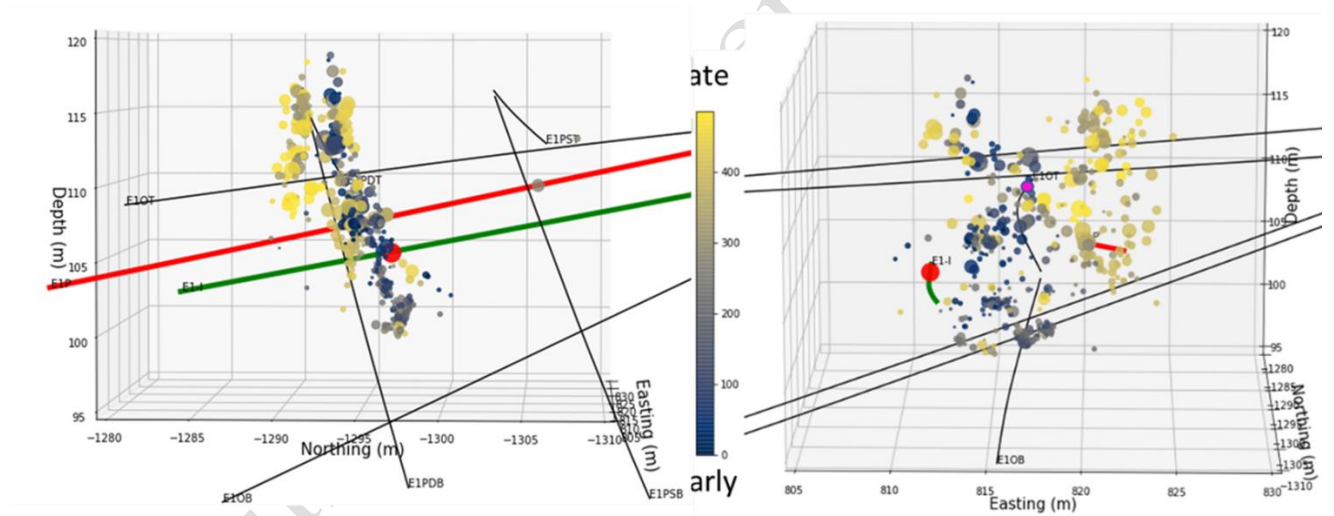
**Figure S4:** Histograms of misfit values obtained for 24, 25p1 and 25p2 experiments (left, center, and right respectively). Blue bars represent all misfit values and orange bars represent data with 50% of highest misfit values removed).



**Figure S5:** Effect of applying the misfit filter. Pre and post filtered data shown in red and green respectively.



**Figure S6:** Dependence of cumulative infrasound (2-80 Hz) measured by combined hydrophone arrays (located on the monitoring wells E1-OT and E1-PDB).



**Figure S7:** Relative orientation of wells E1-OT and E1-PDB microseismic cloud (combined 24 May and 25 May) with the injection and production wells (green and red, respectively).

Day (2018)	Injected volume	Description
24 May	75 L	Hydraulic fracturing
25 May – p1	77 L	Flow through fracture
25 May – p2	121 L	Flow through fracture

**Table S1:** Hydraulic stimulation protocol under study, stimulation carried out at the notch at 50-meter depth on the injection well E1-I.