

Setting Up a New CZO in the Ganga Basin: Instrumentation, Stakeholder Engagement and Preliminary Observations

Surya Gupta¹, Shivam Tripathi¹, Rajiv Sinha¹, Sri Harsha Karumanchi², Debajyoti Paul¹, Sachchida Nand Tripathi¹, Indra Sekhar Sen¹ and Saroj Kumar Dash¹

(1) Indian Institute of Technology Kanpur, Kanpur, India,
(2) Kritsnam Technologies, Kanpur, India

AGU FALL MEETING
New Orleans 11-15 Dec. 2017

POSTER NO: H41G-1535

1. Preamble

- The Ganga River is ranked as the second most polluted river in the world, endangering the lives of 140 fish species, 90 amphibian species along with millions of humans.
- Many small and large scale projects were carried out to clean the river, but resulted in no significant improvements.
- The heterogeneity in current scenario needs a proper understanding of various Critical Zone processes throughout the basin.

2. Importance of CZO

- Anthropogenic changes impact several interconnected systems (surface and groundwater, atmosphere, soil, vegetation etc.)
- Problems caused in these systems are difficult to solve due to current understanding of interacting processes, limited by data availability (Singh, 2015).
- The CZO aims to monitor hydro-meteorological parameters, soil physical and chemical characteristics, geochemical parameters and agricultural decision making.
- This data repository would build a platform to invite interdisciplinary research to address current problems in the Ganga basin.

3. Objectives

1. Set up a hydro-meteorological observatory in a small watershed.
2. Understand the geomorphic characteristics of the watershed using high resolution satellite images and digital elevation models.
3. Estimate water balance components for the watershed using observational data.
4. Determine soil physical and chemical characteristics and water chemistry.
5. Measure the fluxes of N and P in the watershed using geochemical approach.

4. Study Area

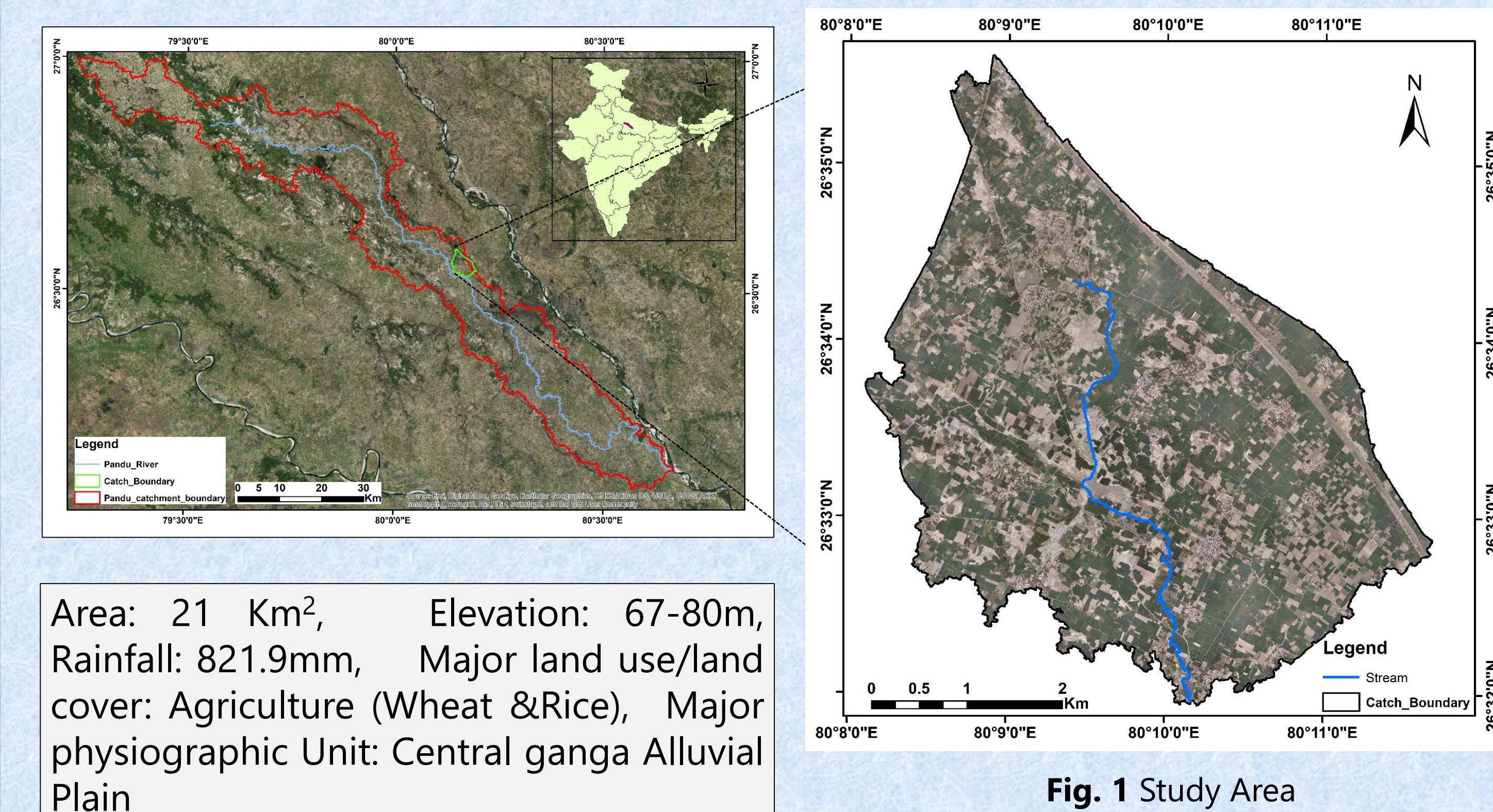


Fig. 1 Study Area

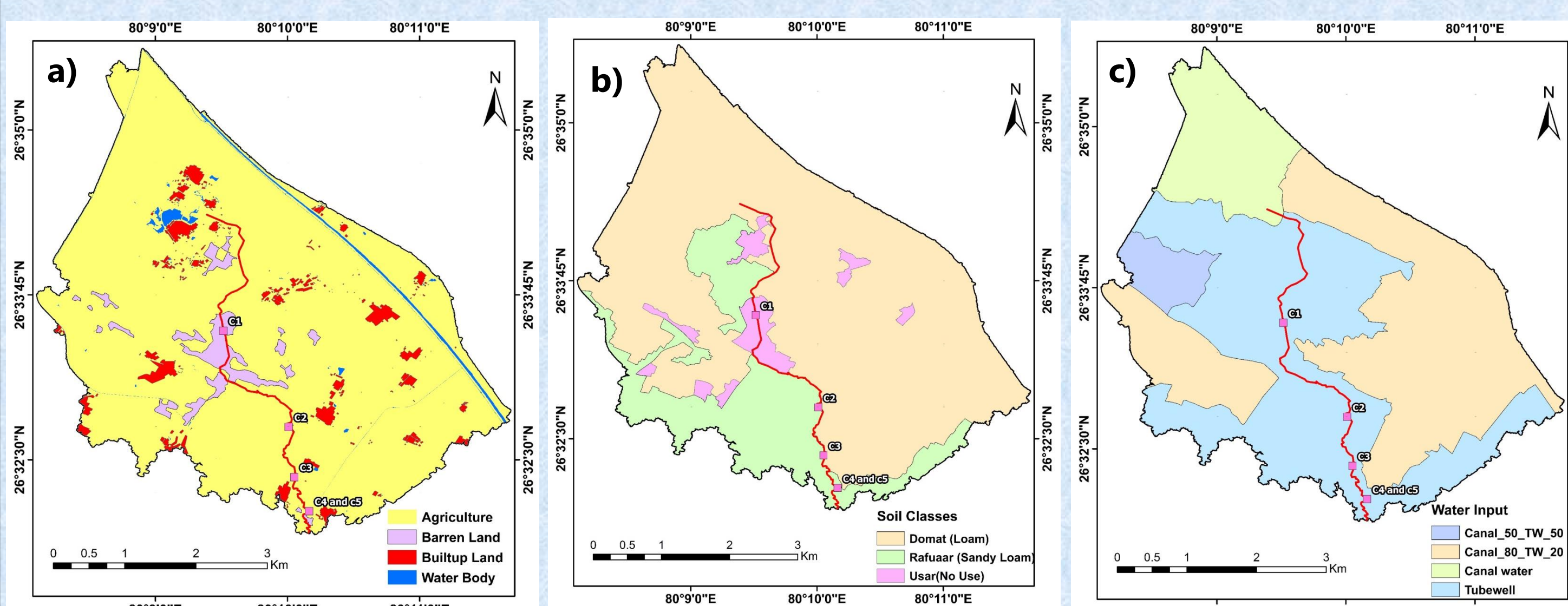


Fig. 2 a) LULC b) Soil Map c) Water Input Map

5. Methods and Approaches

Major Challenges Faced During Instruments Deployment

- Technical:**
 - Identifying measurable hydrological and meteorological variables critical to runoff generating processes
- Administrative:**
 - Obtaining permissions from state, district and local government officials, and police for land verification and allotment

Stakeholder Engagement:



- Deployed Dummy instruments on the field.
- Instrument damaged due to villagers curiosity.
- Interaction with the villagers for the importance of instrument deployment.
- With repetitive iteration, we successfully deployed various instruments.

Fig. 3 a) Dummy Instruments, b) Local Interaction, c) Instrument Deployed

Instrumentation

Purpose	Sensor	No. of Places	Time Interval
Spatially Not Dense but Temporally fine Data (High Cost)			
Meteorological Parameter (wind speed, direction, humidity, radiation, temperature, pressure, evaporation)	AWS	1. Upstream (Bansathi) 2. Downstream (Bani)	15 Minute Interval
Spatially Dense But Temporally Not Fine Data (High Cost)			
Groundwater level	Well Sounder	60 (Open Wells)	Biweekly (March 17 to present)
Soil Moisture (SM)	Theta Probe (Surface SM)	18	Weekly (August 17 to present)
	Trime Pico (1m depth)	18	Weekly (August 17 to present)
Discharge	Current meter	5 Culverts and Canal	Seasonal stream (Monsoon time)
LAI	LAI-2200	18	Weekly
Spatially Dense and Temporally Fine data (Real Time & Low Cost)			
Groundwater Level	Automatic GWL	20	15 minutes
Soil Moisture	Specmeter SM	2 locations: 8 sensors at each site	15 minutes
Rainfall	Rain gauge	8	Daily
Soil Sampling	Bore hole	4	Depends upon stakeholder

Fig. 4 Locations of sensors deployed

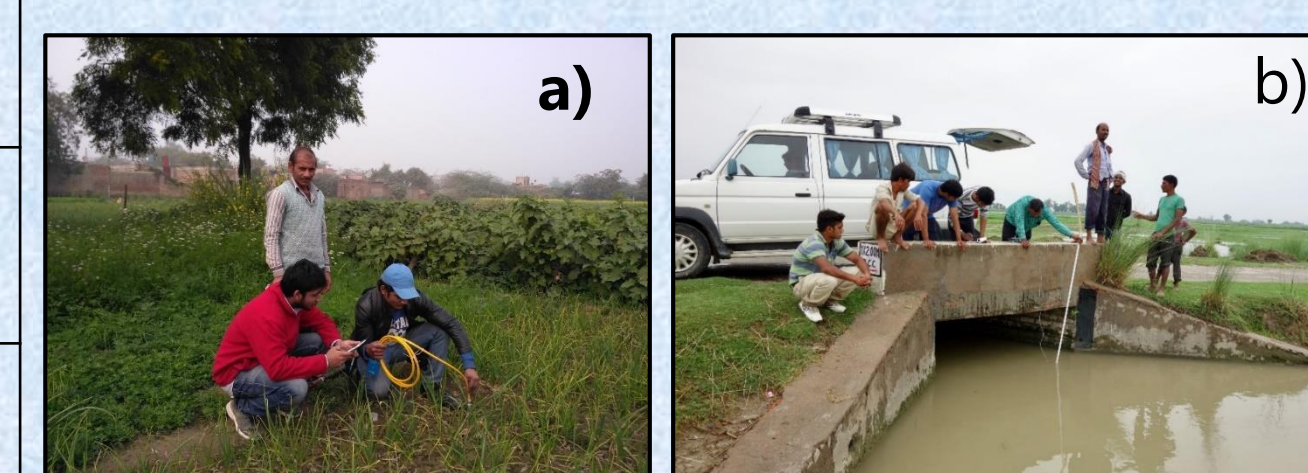


Fig. 5 a) SM Measurement b) Discharge measurement

6. Preliminary Observations

Variation of Yield with Soil Type

- **Wheat crop Yield is 0.5-1 t/ha** higher for fields irrigated by GW compared to those irrigated by canal water
- Major difference in yield due to soil type (Fig.6)

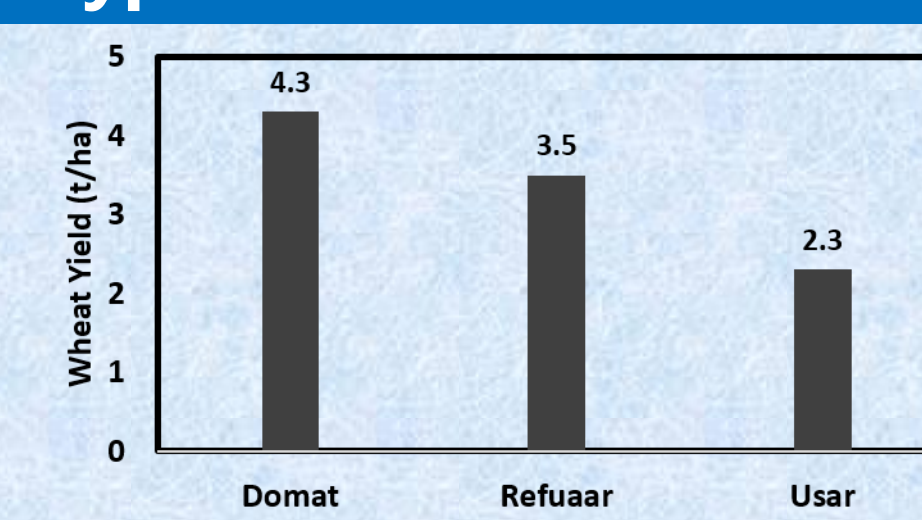


Fig.6 Soil type and Yield

Variability of Soil Moisture in Paddy Fields

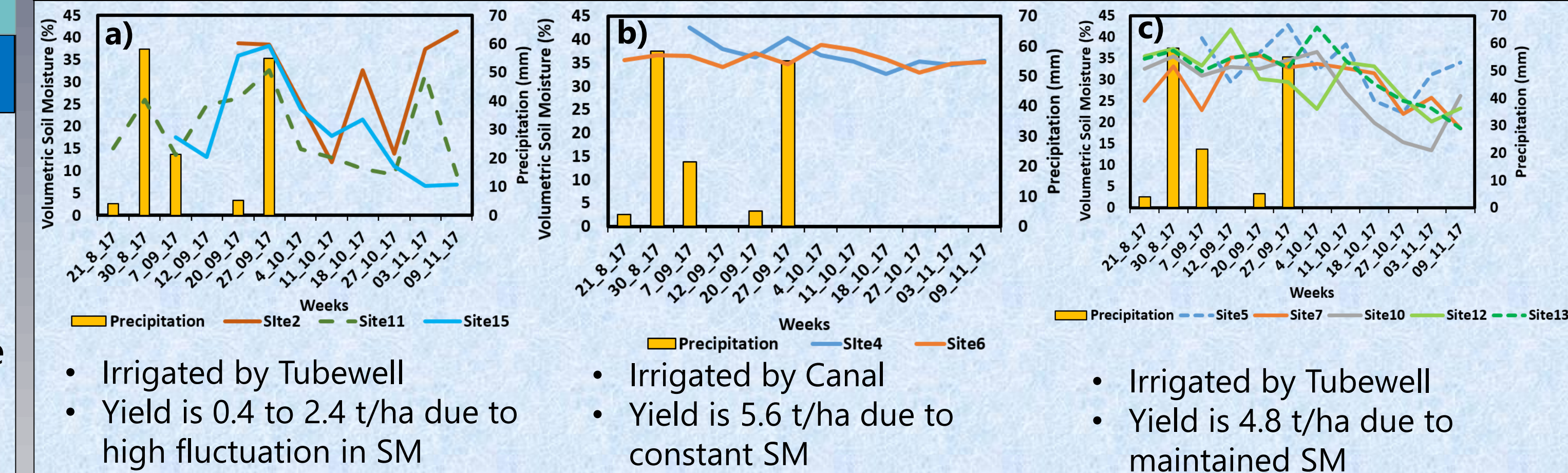


Fig.7 Soil Moisture variability (a, b & c)

Spatial Groundwater Level Variability

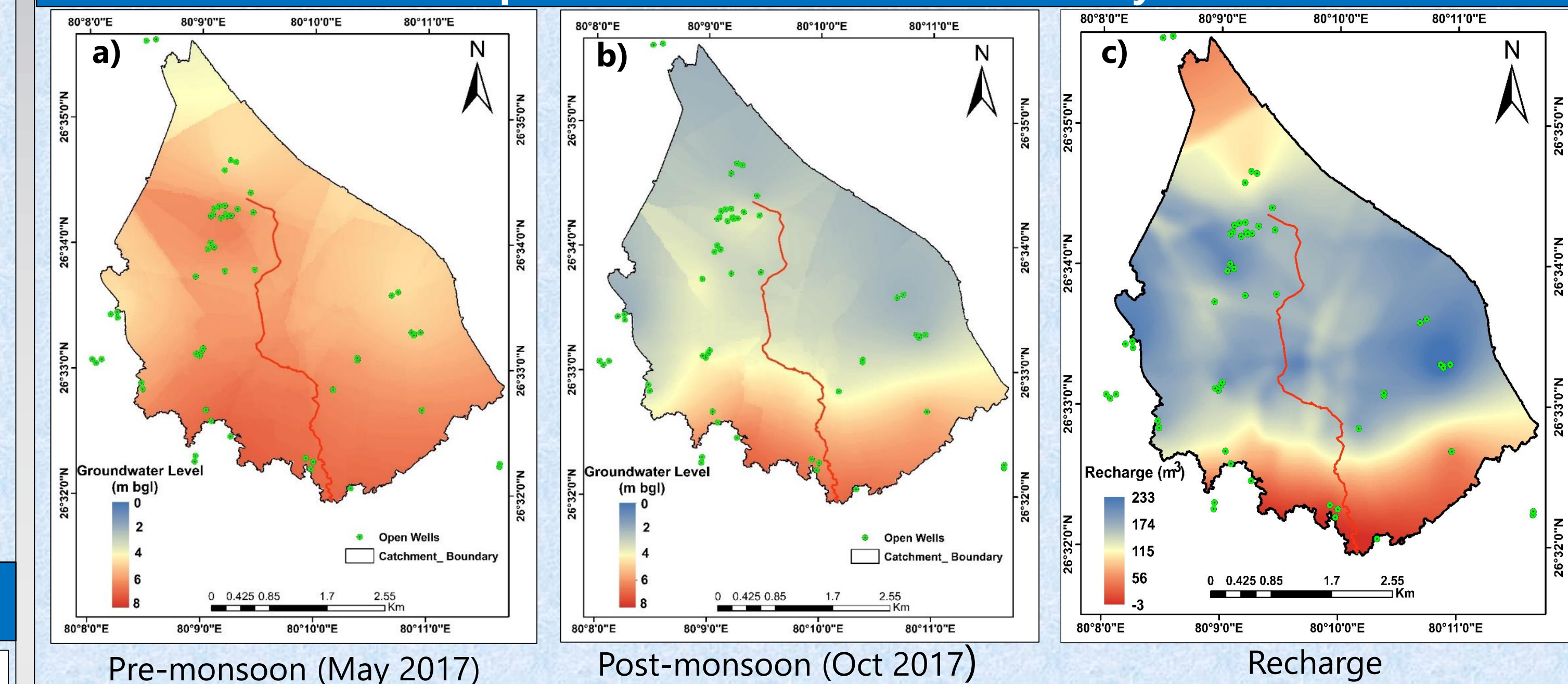


Fig.8 Spatial Groundwater Variability (a & b) and Recharge (c)

- Raster surface has been created using Kriging method.
- All the area gets recharged in post monsoon expect the downstream area.

ET, Precipitation, Temperature and NDVI

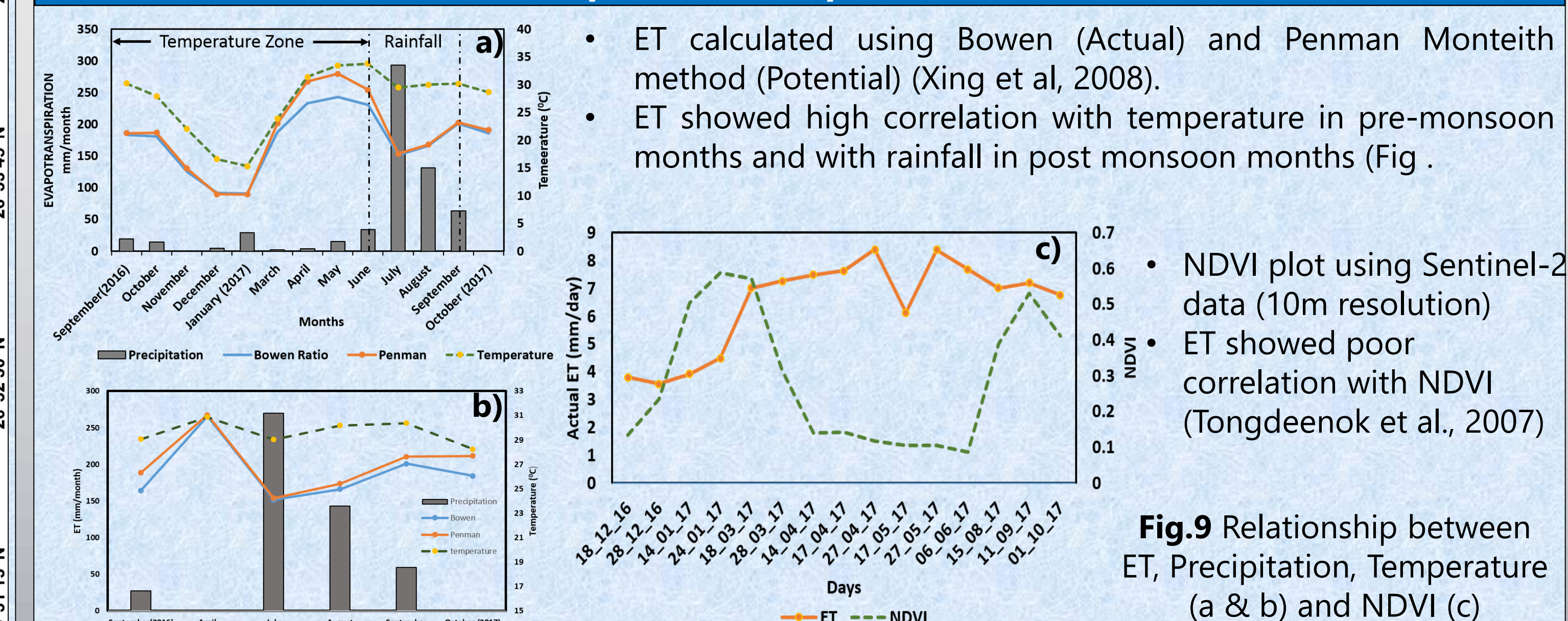


Fig.9 Relationship between ET, Precipitation, Temperature (a & b) and NDVI (c)

7. Ongoing work

- Computation of the Water Balance for the Watershed.
- To observe the variation in the satellite and ground truth data for soil moisture.
- Interrelation between different measured attributes of the study area.

8. Acknowledgements

We thank Ministry of Earth Sciences, Government of India for providing us a research grant (Ref.No: MoES/PAMC/H&C/63/2015-PC-II). We would also like to say thanks to Atul Gaur (Field Engineer), Soham Adla, Vinod and Kripa Shankar Ji for their help in establishing this.

References

- Healy, R. W., & Cook, P. G. (2002). Using groundwater levels to estimate recharge. Hydrogeology journal, 10(1), 91-109.
- Singh, V. (2015). The Indian critical zone—a case for priority studies. Current Science, 108(6), 1045.
- Tongdeenok, P., Boonyawat, S., Chuchip, K. (2007). Estimating Evapotranspiration of Paddy Field and Teak Plantation Using Remote Sensing. Kasetart Journal of Natural Science, 41, 798 – 810.
- Xing, Z., Chow, L., Meng, F. R., Rees, H. W., Steve, L., & Monteith, J. (2008). Validating evapo-transpiration equations using bowen ratio in New Brunswick, Maritime, Canada. Sensors, 8(1), 412-428.

For more detail please contact Surya Gupta (surya@iitk.ac.in), Dr. Rajiv Sinha (rsinha@iitk.ac.in)