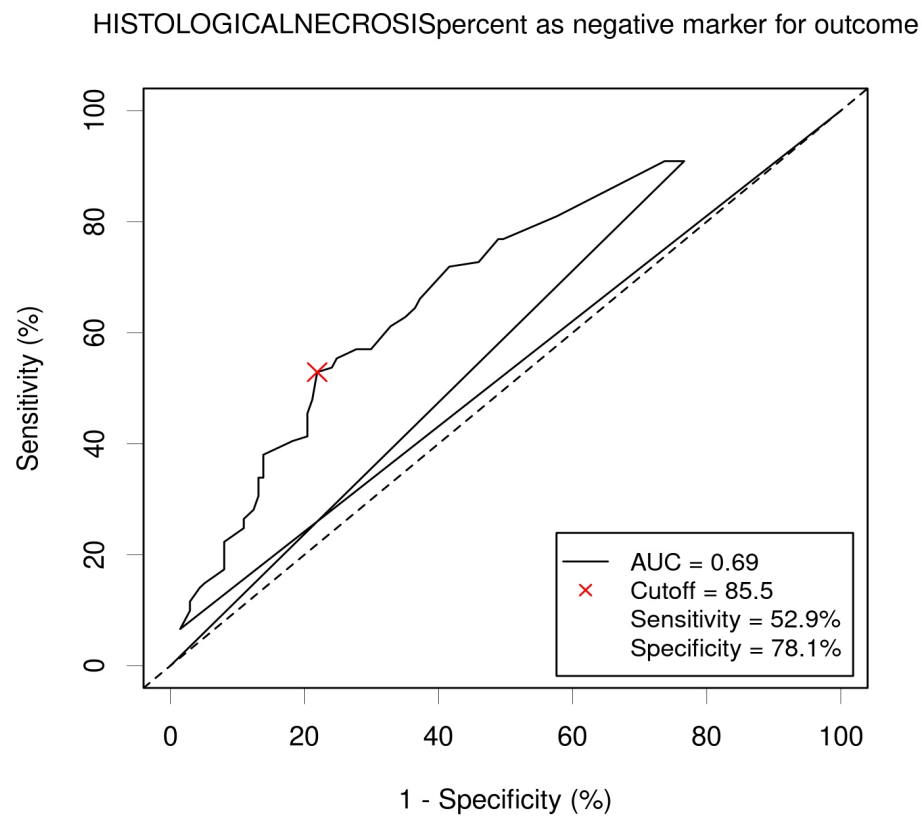
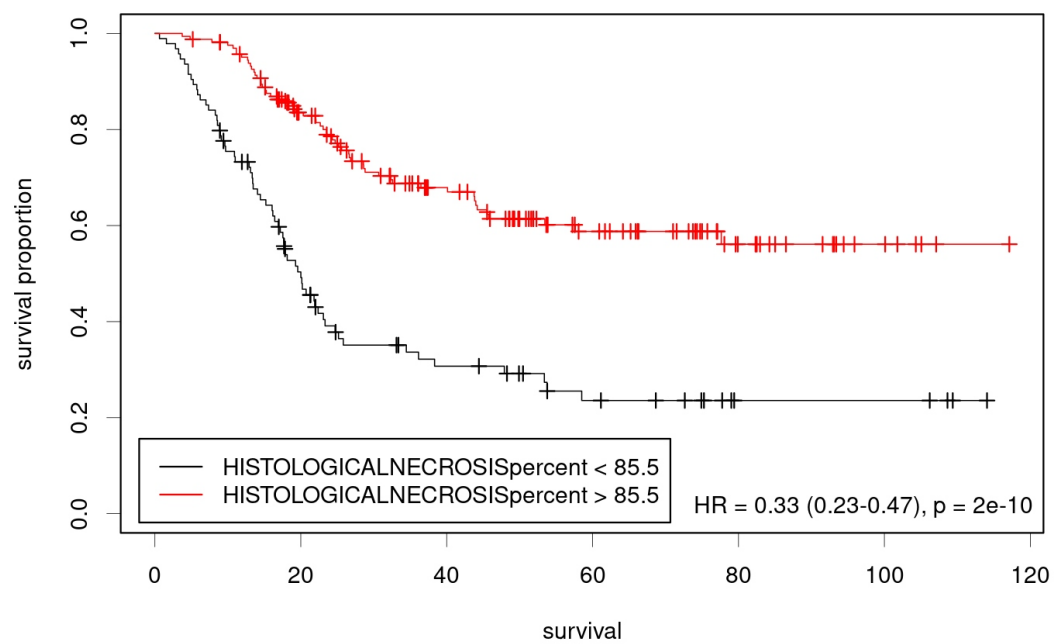


Figure 3. Survival based on tumor necrosis (TN) cut-off derived using Receiver Operating Characteristic (ROC) curve for A) EFS of the whole cohort B) OS of the whole cohort C) EFS of the localized cohort D) OS of the localized cohort E) EFS of the metastatic cohort F) OS of the metastatic cohort

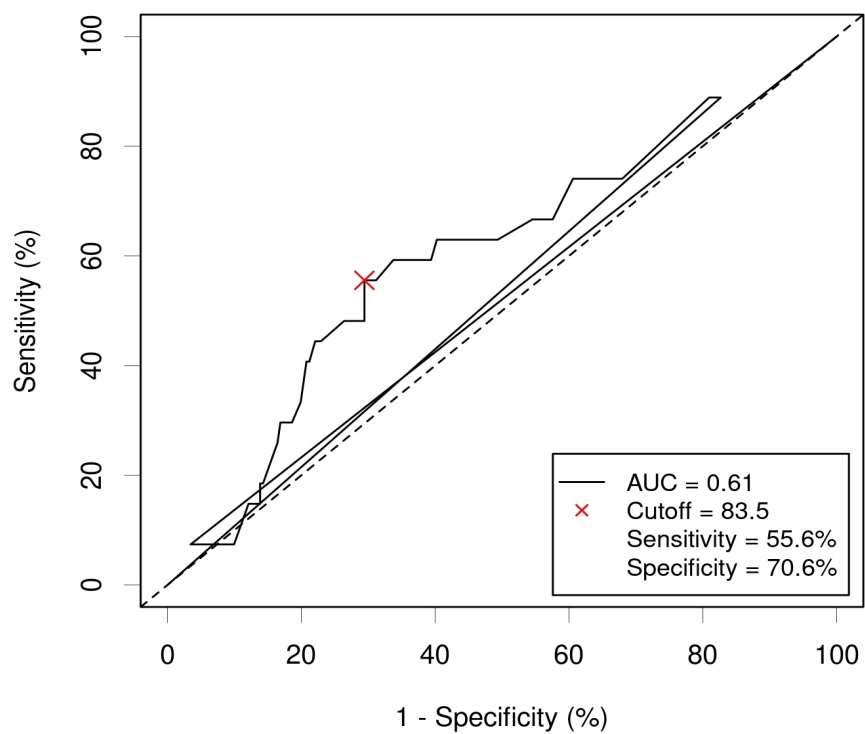
A

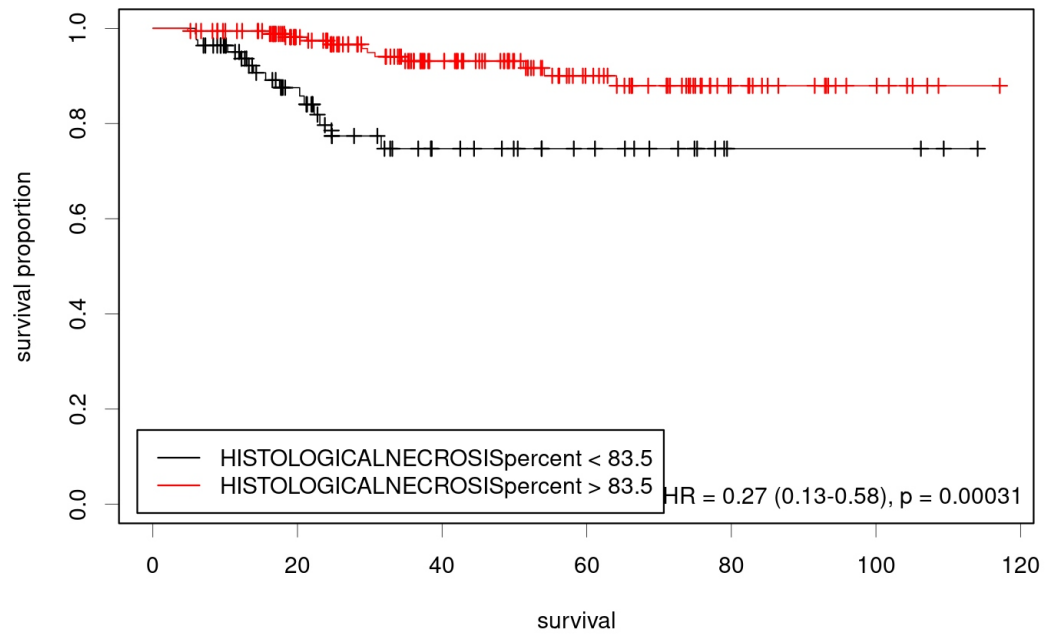




B

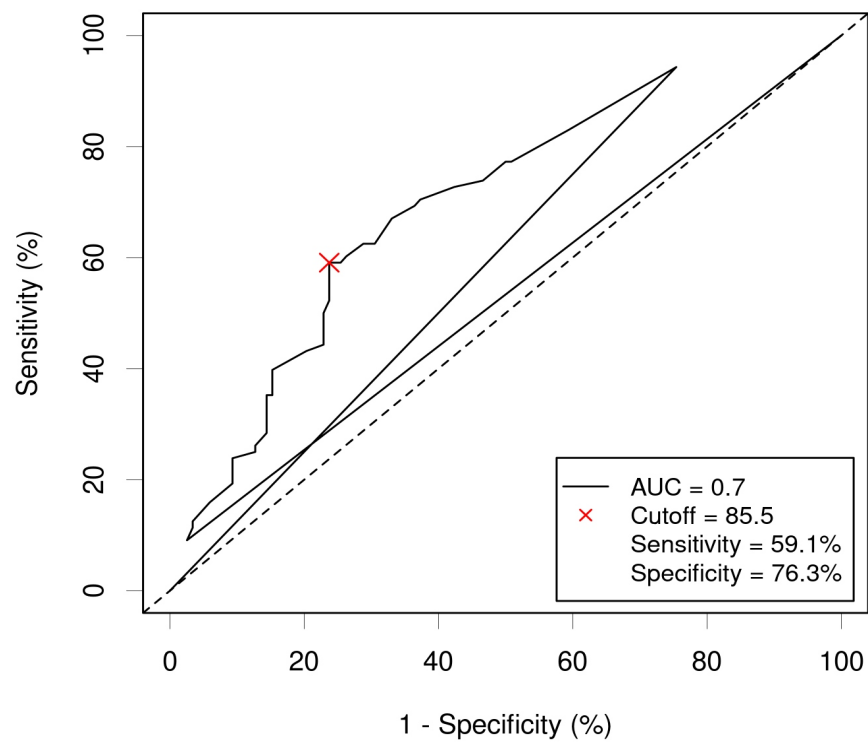
HISTOLOGICALNECROSISpercent as negative marker for outcome

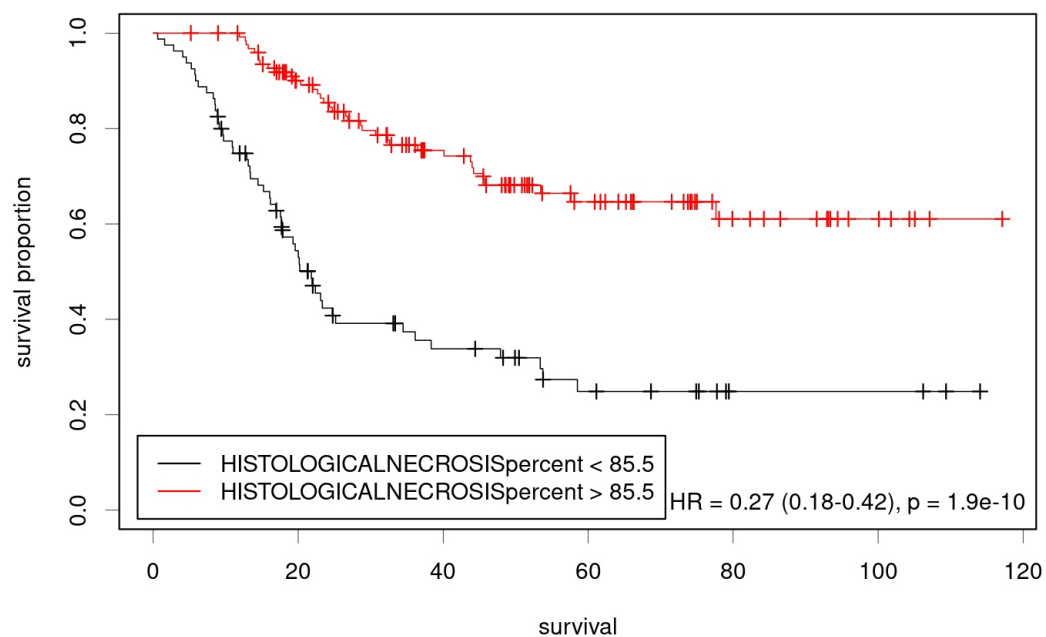




C

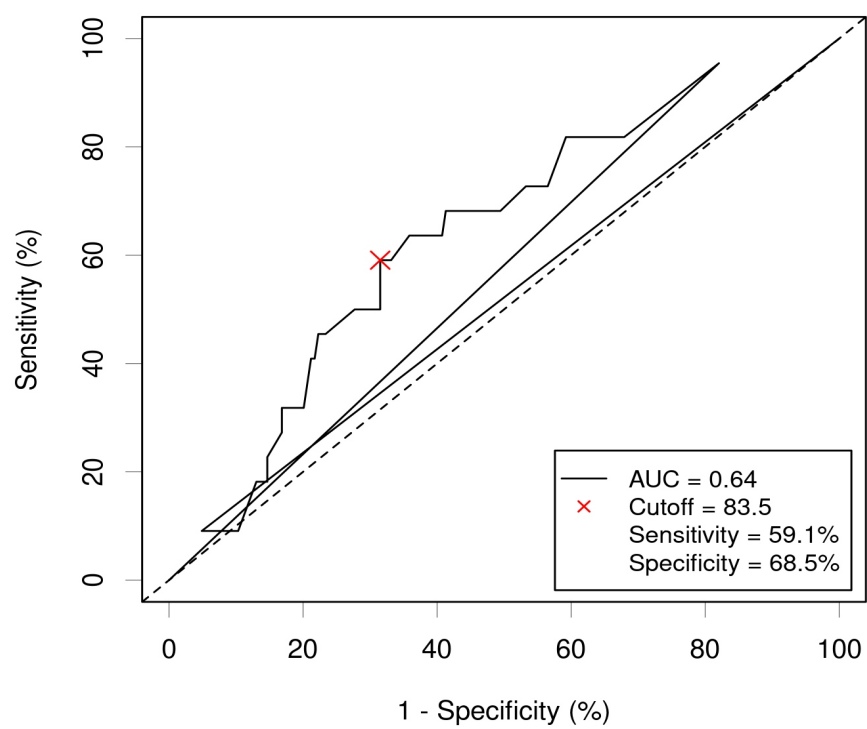
HISTOLOGICALNECROSISpercent as negative marker for outcome

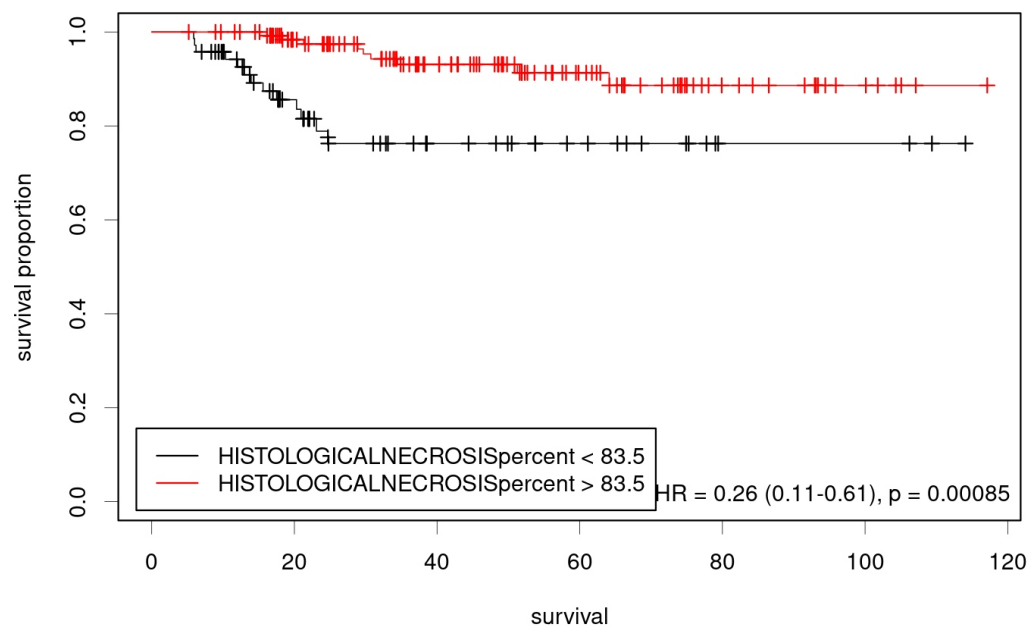




D

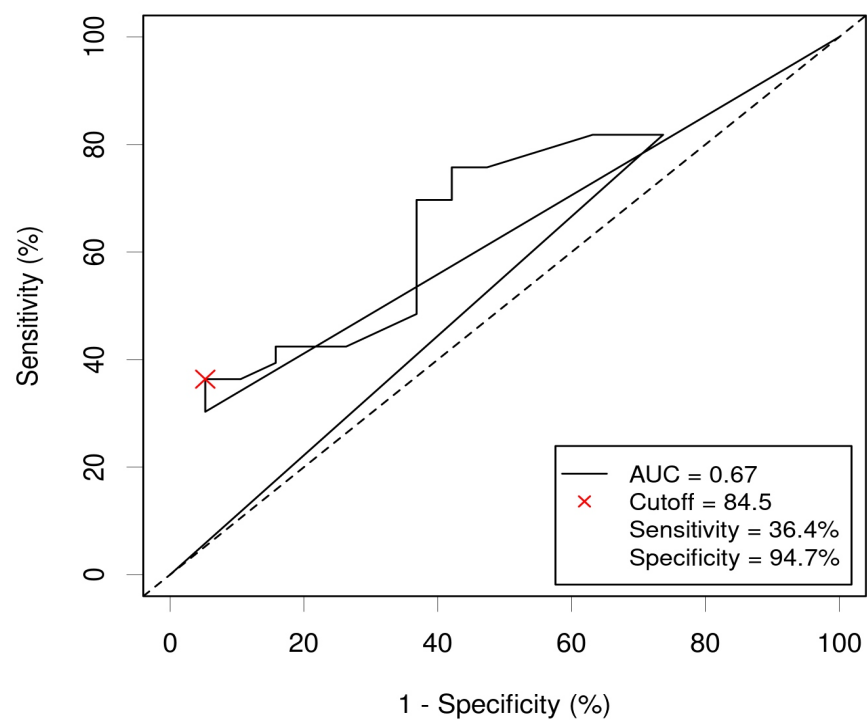
HISTOLOGICALNECROSISpercent as negative marker for outcome

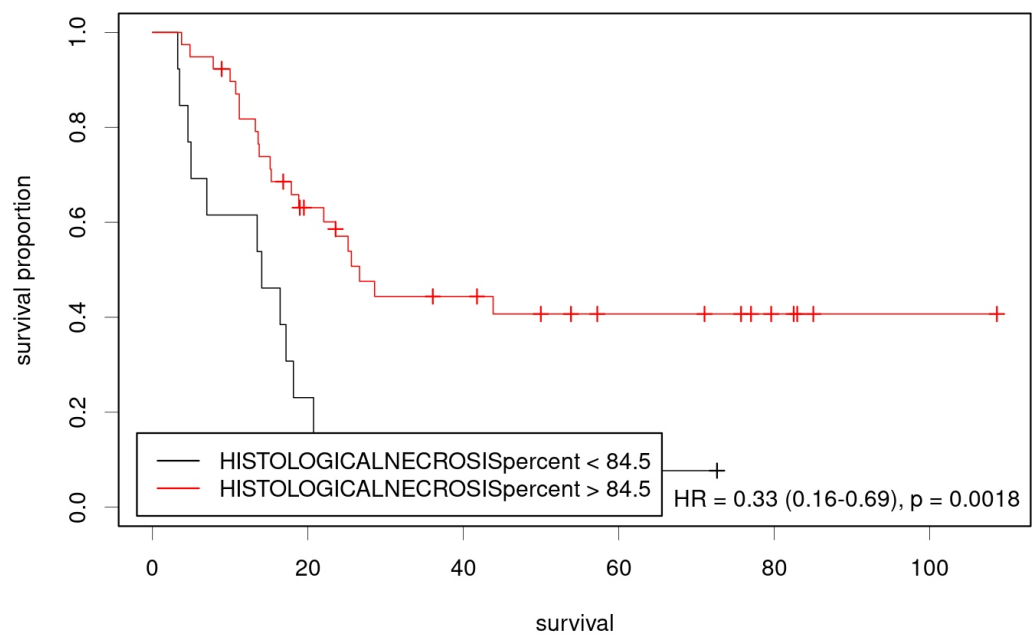




E

HISTOLOGICALNECROSISpercent as negative marker for outcome





F

HISTOLOGICALNECROSISpercent as positive marker for outcome

