

A New Transesophageal Echocardiography Guidance Protocol for Edge-to-Edge Repair of the Tricuspid Valve – The “Mainz Approach”

Jaqueline da Rocha e Silva¹, Tobias Ruf², Michaela Hell³, Alexander Tamm⁴, Martin Geyer², Thomas Munzel⁵, Ralph Stephan von Bardeleben², and Felix Kreidel²

¹Universitätsmedizin der Johannes Gutenberg-Universität Mainz

²Universitätsmedizin Mainz

³University Hospital Center Mainz Department of Cardiology and Angiology

⁴University Medical Centre of the Johannes Gutenberg University Mainz

⁵University of Mainz

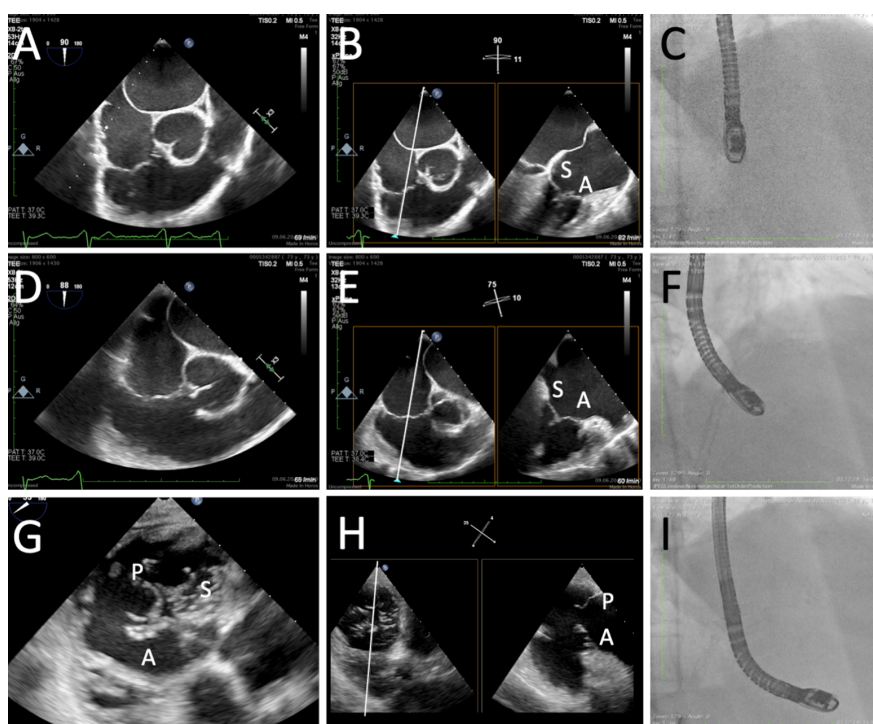
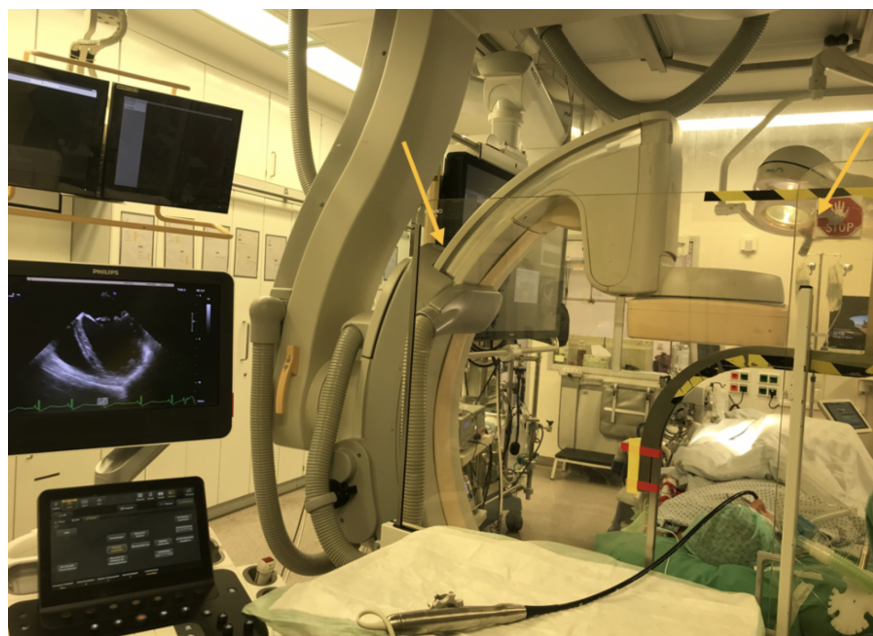
May 5, 2021

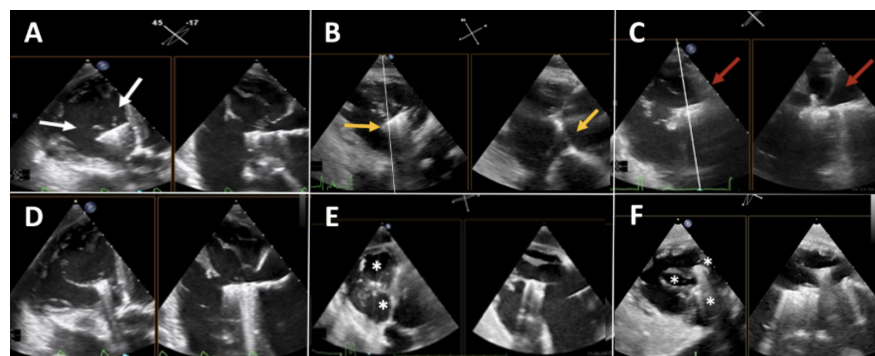
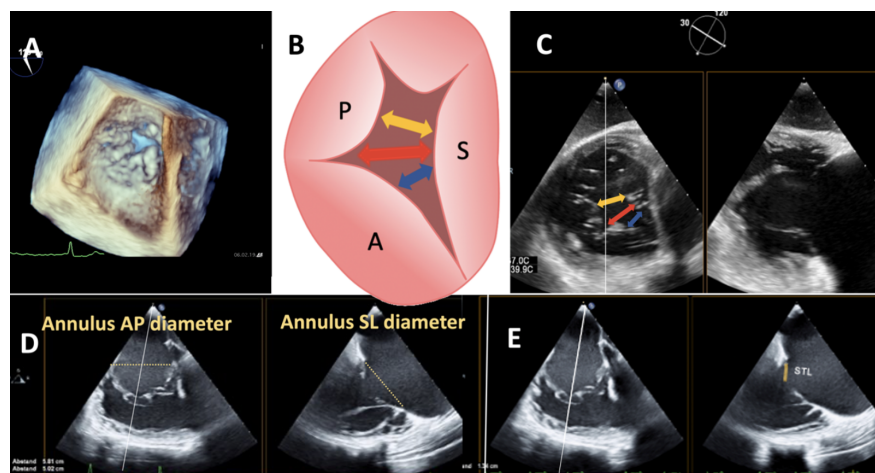
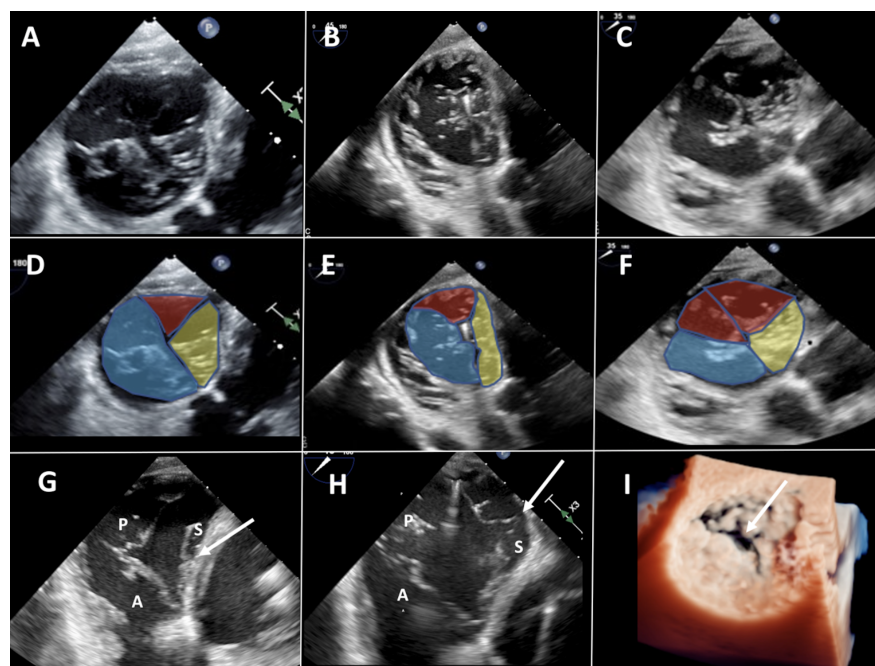
Abstract

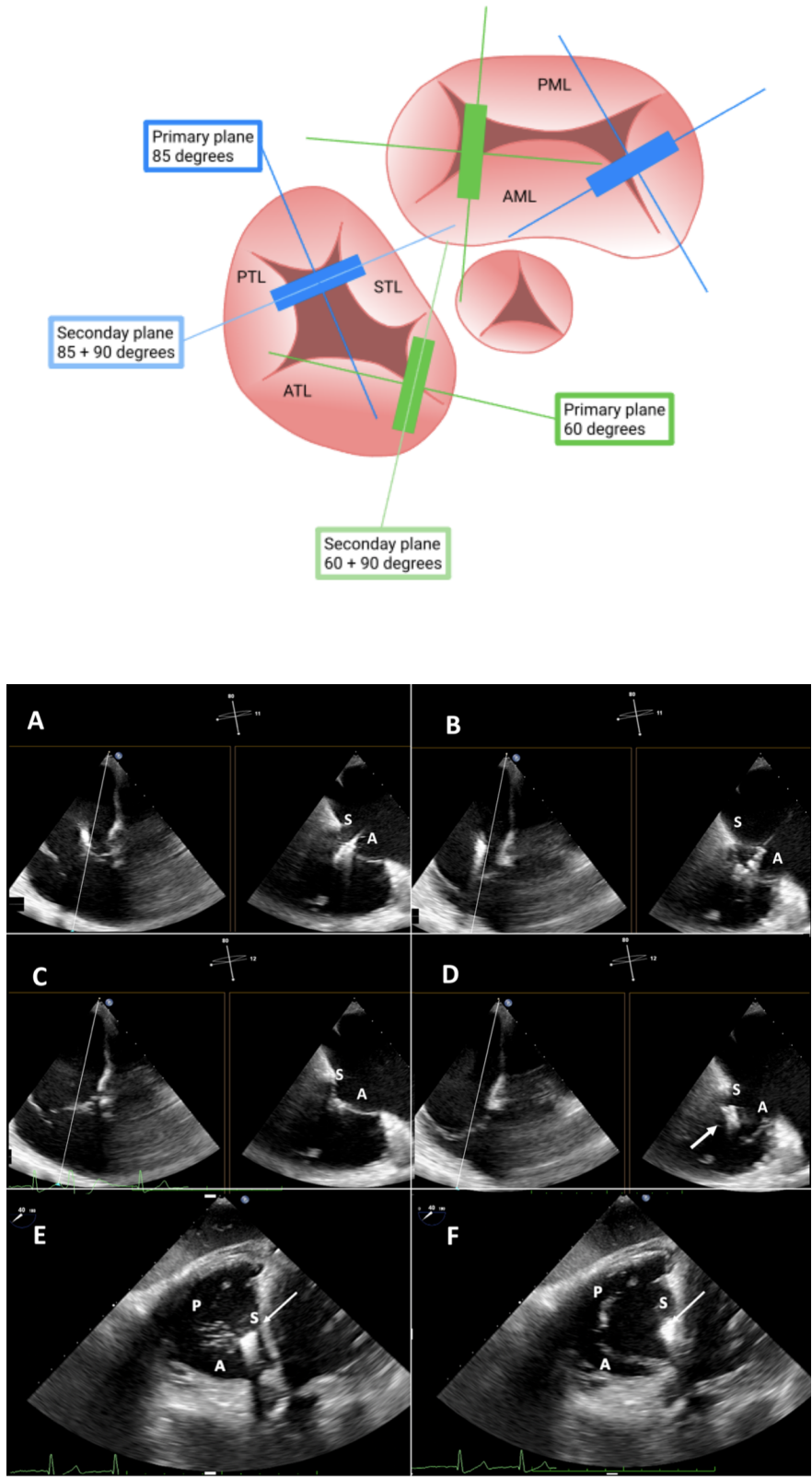
Intraprocedural transesophageal echocardiography (TEE) guidance plays an essential role in transcatheter repair therapy of the tricuspid valve (TV). So far, several different imaging concepts are in use. However, an imaging protocol that fully addresses the morphological complexity of the TV and further offers efficacious workarounds for the frequently occurring restrictions of TV imaging is still missing. As a tertiary referral center with a large experience of more than 250 cases of transcatheter edge-to-edge repair (TEER) of the TV performed at the Heart Valve Center in Mainz/Germany, we have constantly adapted our periinterventional echocardiographic approach to accomplish both. As a key measure for success, we intensely rely on the transgastric acoustic windows that not only delivers high-resolution information on the morphology of the TV and all relevant procedural steps but also help to avoid the frequent shadowing artefacts experienced in transesophageal imaging.

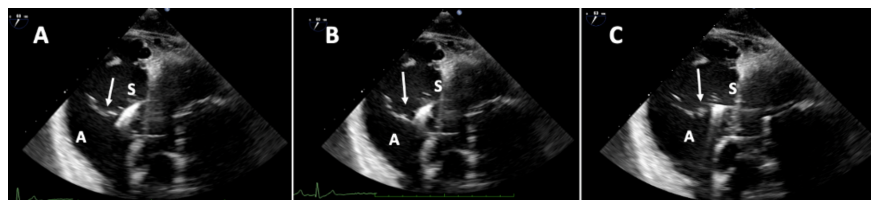
Hosted file

daRochaSilva_TEERguidance_submission.pdf available at <https://authorea.com/users/412015/articles/520858-a-new-transesophageal-echocardiography-guidance-protocol-for-edge-to-edge-repair-of-the-tricuspid-valve-the-mainz-approach>









Echocardiographic guidance protocol for TEER of TV The Mainz-Approach

