

Ocean Heat Content responses to changing Anthropogenic Aerosol Forcing Strength: regional and multi-decadal variability

Emma J.D. Boland^{1,1}, Andrea J. Dittus^{2,2}, Daniel C Jones^{1,1}, Simon A. Josey^{3,3}, and Bablu Sinha^{4,4}

¹British Antarctic Survey

²University of Reading

³National Oceanography Centre

⁴National Oceanography Centre, Southampton

November 30, 2022

Abstract

The causes of decadal variations in global warming are poorly understood, however it is widely understood that variations in ocean heat content are linked with variations in surface warming. To investigate the forced response of ocean heat content (OHC) to anthropogenic aerosols (AA), we use an ensemble of historical simulations, which were carried out using a range of anthropogenic aerosol forcing magnitudes in a CMIP6-era global circulation model. We find that the centennial scale linear trends in historical ocean heat content are significantly sensitive to AA forcing magnitude ($-11.0 \pm 0.2 \times 10^{19}$ J m⁻¹ century⁻¹)/(W m⁻²), $R^2=0.99$), but interannual to multi-decadal variability in global ocean heat content appear largely independent of AA forcing magnitude. Comparison with observations find consistencies in different depth ranges and at different time scales with all but the strongest aerosol forcing magnitude, at least partly due to limited observational accuracy. We find broad negative sensitivity of ocean heat content to increased aerosol forcing magnitude across much of the tropics and sub-tropics. The polar regions and North Atlantic show the strongest heat content trends, and also show the strongest dependence on aerosol forcing magnitude. However, the ocean heat content response to increasing aerosol forcing magnitude in the North Atlantic and Southern Ocean is either dominated by internal variability, or strongly state dependent, showing different behaviour in different time periods. Our results suggest the response to aerosols in these regions is a complex combination of influences from ocean transport, atmospheric forcings, and sea ice responses.

Ocean Heat Content responses to changing Anthropogenic Aerosol Forcing Strength: regional and multi-decadal variability

Emma J.D. Boland¹, Andrea J. Dittus², Daniel C. Jones¹, Simon A. Josey³,
and Bablu Sinha³

¹British Antarctic Survey, Cambridge, UK

²National Centre for Atmospheric Science, University of Reading, Reading, UK

³National Oceanography Centre, Southampton, UK

Key Points:

- Climate model analysis shows centennial trends of historical global ocean heat content depend on anthropogenic aerosol forcing strength.
- Increased aerosol forcing leads to general cooling of the global ocean, but with significant regional and decadal variations.
- The strongest responses to aerosol forcing coincide with the strongest ocean heat content trends, in the Polar and upper Pacific oceans.

Corresponding author: Emma Boland, emmomp@bas.ac.uk

Abstract

The causes of decadal variations in global warming are poorly understood, however it is widely understood that variations in ocean heat content are linked with variations in surface warming. To investigate the forced response of ocean heat content (OHC) to anthropogenic aerosols (AA), an ensemble of historical simulations were carried out using a range of anthropogenic aerosol forcing magnitudes in a CMIP6-era global circulation model. We find that the centennial scale linear trends in historical ocean heat content are significantly sensitive to AA forcing magnitude ($-40.5 \pm 0.7 \times 10^{22}$ (J century⁻¹)/(W m⁻²), $R^2=0.99$), but interannual to multi-decadal variability in global ocean heat content appear largely independent of AA forcing magnitude. Comparison with observations find consistencies in different depth ranges and at different time scales with all but the strongest aerosol forcing magnitude, at least partly due to limited observational accuracy. We find broad negative sensitivity of ocean heat content to increased aerosol forcing magnitude across much of the tropics and sub-tropics. The polar regions and upper Pacific show the strongest heat content trends, and also show the strongest dependence on aerosol forcing magnitude. However, the ocean heat content response to increasing aerosol forcing magnitude in these regions is either dominated by internal variability, or strongly state dependent, showing different behaviour in different time periods. Our results suggest the response to aerosols in these regions is a complex combination of influences from ocean transport, atmospheric forcings, and sea ice responses.

Plain Language Summary

As well as emitting greenhouse gases that warm the planet, throughout the industrial era humans have also released substances known as aerosols into the atmosphere. In general, these aerosols reflect heat arriving at the surface of the planet and cause cooling, however we don't have a good idea how changes in the amounts of these aerosols changes ocean warming. Most of the heat that has built up in the climate system has gone into the ocean, so this is important to understand. We use a large computer model to look at how the ocean would have warmed with different levels of aerosols from humans in atmosphere, keeping other things like greenhouse gases the same. We find that the amount of aerosols in the atmosphere strongly affects the warming of the global ocean on timescales of many decades to hundreds of years. Whilst most of the ocean cools when more aerosols are added, the Polar oceans and the upper Pacific ocean show different behaviour. What is going on in these regions is probably the result of many things, such as changes in ocean currents, in sea ice, as well as in the amount of aerosols and where they are being emitted.

1 Introduction

Anthropogenic aerosols are a well known source of decadal variability in rates of global surface warming (Dittus et al., 2020; Ekman, 2014; Jones et al., 2013; Wilcox et al., 2013; Fyfe et al., 2016). However, the magnitude of the historical effective radiative forcing due to anthropogenic aerosols (AAs) remains highly uncertain (Forster et al., 2021; Bellouin et al., 2020; Smith et al., 2020). Reducing the uncertainty in the radiative forcing due to AAs would lead to better predictions of future warming, and a better understanding of the sources of decadal variability in historic warming.

Variations in ocean heat uptake have also been robustly linked with decadal variations in the rate of surface warming (Marshall et al., 2015; Meehl et al., 2011). In particular, changes in ocean heat uptake in the Pacific have been linked with the early 2000's slow-down in global surface warming (England et al., 2014; Kosaka & Xie, 2013; Oka & Watanabe, 2017; Stolpe et al., 2021), although Chen and Tung (2014) instead link the so-called 'hiatus' with changes in heat transport in the Atlantic and Southern Oceans. Yin et al. (2018) also link the Pacific with the subsequent jump in global surface warm-

Table 1. SMURPHS ensemble Anthropogenic Aerosol (AA) forcing factors and 2014 effective radiative forcing (ERF).

AA Scaling factor	2014 ERF
0.2	-0.38 Wm^{-2}
0.5	-0.60 Wm^{-2}
0.7	-0.93 Wm^{-2}
1.0	-1.17 Wm^{-2}
1.5	-1.50 Wm^{-2}

ing in 2014-2016. Variability in AAs have been found to be an important source of changes in ocean heat content (Delworth et al., 2005; Fiedler & Putrasahan, 2021), along with variability in green-house gases, volcanic aerosols, and internal variability.

We utilise a climate model ensemble specifically designed (as part of the UK SMURPHS project) to sample a wide range of historical aerosol forcings. Using the SMURPHS ensemble allows us to investigate the link between aerosol forcing and decadal variations in ocean heat uptake, assessing the forced response of ocean heat content to the magnitude of AA forcing in a CMIP6 generation model, using multiple ensemble members to improve statistical robustness. Whilst studies such as (Collier et al., 2013; Cai et al., 2006) looked at the effects of AA on ocean heat content (OHC) and circulation by comparing GCMs with and without AA forcing, we are not aware of any previous studies looking at the effects of changing AA forcing strength on OHC.

This paper is laid out as follows: we first give background on the simulations and observations used in this study in section 2, and then describe our findings in section 3. This is broken up into analysis of changes in volume integrated OHC on a centennial scale (section 3.1), spatial patterns of integrated ocean heat content on multi-decadal scales (section 3.2), and sensitivity of these patterns to aerosol forcing magnitude (section 3.3). We finish by discussing the implications of our results in section 5.

2 Simulations and Observations

All results are from an ensemble of historical scaled aerosol emissions simulations, conducted with the HadGEM3-GC3.1-LL global climate model, as describe in detail in Dittus et al. (2020). The SMURPHS ensemble was designed to sample a plausible range of historical aerosol forcing (Booth et al., 2018), with 2014 (the end of the historical simulation) AA effective radiative forcing (ERF) ranging from -0.38 to -1.50 Wm^{-2} , which spans most of the 95% confidence interval presented in IPCC AR5 (Boucher et al., 2013). The effective radiative forcings were calculated using a series of fixed SST runs as described in (Dittus et al., 2020). The negative sign of the ERF indicates the addition of further AAs tends to cool the earth’s surface.

The targeted aerosol forcings were achieved by applying a constant scaling factor in space and time to the standard historical CMIP6 AA and precursor emissions (Hoesly et al., 2018), see Dittus et al. (2020) for further details. Five scaling factors were used (table 1), each with five ensemble members spanning the full historical period 1850–2014, giving a total of 25 ensemble members. The 1.0 forcing case is the standard CMIP6 historical emissions scenario.

Hobbs et al. (2016) demonstrate that de-drifting ocean heat content (OHC) in CMIP5 models closes the time-varying energy budget on decadal scales. Assuming similar behaviour in CMIP6 models, all calculations of OHC in this work were de-drifted using the

linear trend in the same OHC calculation from the first 500 years of the HadGEM3-GC3.1-LL pre-industrial control run. This was carried out for each integral of heat content separately, so at each depth range, in each basin, and at each latitude-longitude or latitude-depth point. The offset of the starting points of each ensemble member was also accounted for. Following the advice of Dittus et al. (2020), we advise caution in interpreting data from before 1900 due to the impacts of any possible small shocks introduced by the abrupt change in AA forcing at 1850 (1900 has been marked with a dashed line in all time series plots).

Ocean basins were defined using the standard masks for this ocean model configuration. A proxy volcanic activity time series was generated by summing the time series of long-wave absorption due to volcanic aerosols over latitude, atmospheric model level, and wavelength. Qualitatively similar time series were produced summing any of the other volcanic forcing fields.

From section 3.2.2 on, we concentrate on two 30-year time periods: 1960-1991 and 1980-2011. We choose to focus on these in particular for two reasons: firstly, they overlap with the observational time series, and secondly, because they cover the period of increasing OHC trends (see section 3.2.1).

The observations used in this study come from two datasets. First, from the IAP Ocean Gridded Product (Cheng et al., 2017), referred to as IAP17, we use the monthly 0-700m and 0-2000m time series, downloaded from <http://159.226.119.60/cheng/> in January 2021. Secondly, from the World Ocean Atlas 2018 (Boyer et al., 2018), referred to as WOA18, we use the yearly 0-700m and pentadal 0-2000m Global Ocean Heat Content time series and associated standard error, downloaded from <https://www.ncei.noaa.gov/products/world-ocean-atlas> in July 2021.

3 Results

3.1 Simulated Ocean Heat Content

Ocean Heat Content (OHC) was calculated from the model potential temperature fields (θ) as follows:

$$\text{OHC} = c_p \rho_0 \int \theta \, dV, \quad (1)$$

where c_p is the heat capacity of sea water (taken to be 3,850 J/(kg C)), ρ_0 is a reference density (taken to be 1.027x10³ kg/m³), and V is the volume considered, which can be the global ocean, a given basin, and/or a given depth range. Whilst the volume of the model ocean is allowed to vary in time in response to effects such as thermal expansion, the impact this has on the OHCs presented here is at maximum a few percent, and so we use a fixed volume for simplicity.

Comparing global OHC anomalies (with respect to the 1850-1900 ensemble mean) from different ensemble members (figure 1a), the effect of different AA emissions scale factors becomes apparent at around 1950, with a spread on the order of 100x10²³ J between the 0.2 and 1.5 experiments by the end of the simulations in 2014 (figure 1a). The 0.2 ensemble members warm rapidly, with a close to linear increase in time, as the weaker AA forcing enhances GHG-induced warming. The 1.5 ensemble members cool until approximately 2000, as the stronger AA forcing more than offsets the GHG-induced warming.

Considering contributions to global OHC from each of the four main ocean basins, it is apparent that the sensitivity of OHC to AA forcing factor is not spatially uniform (figures 1b-e). The Pacific shows the most divergence between forcing ensembles by the end of 2014, whereas the Indian ocean shows considerable overlap between ensembles for much of the 20th century. Additionally, the form of the time series varies by basin - re-

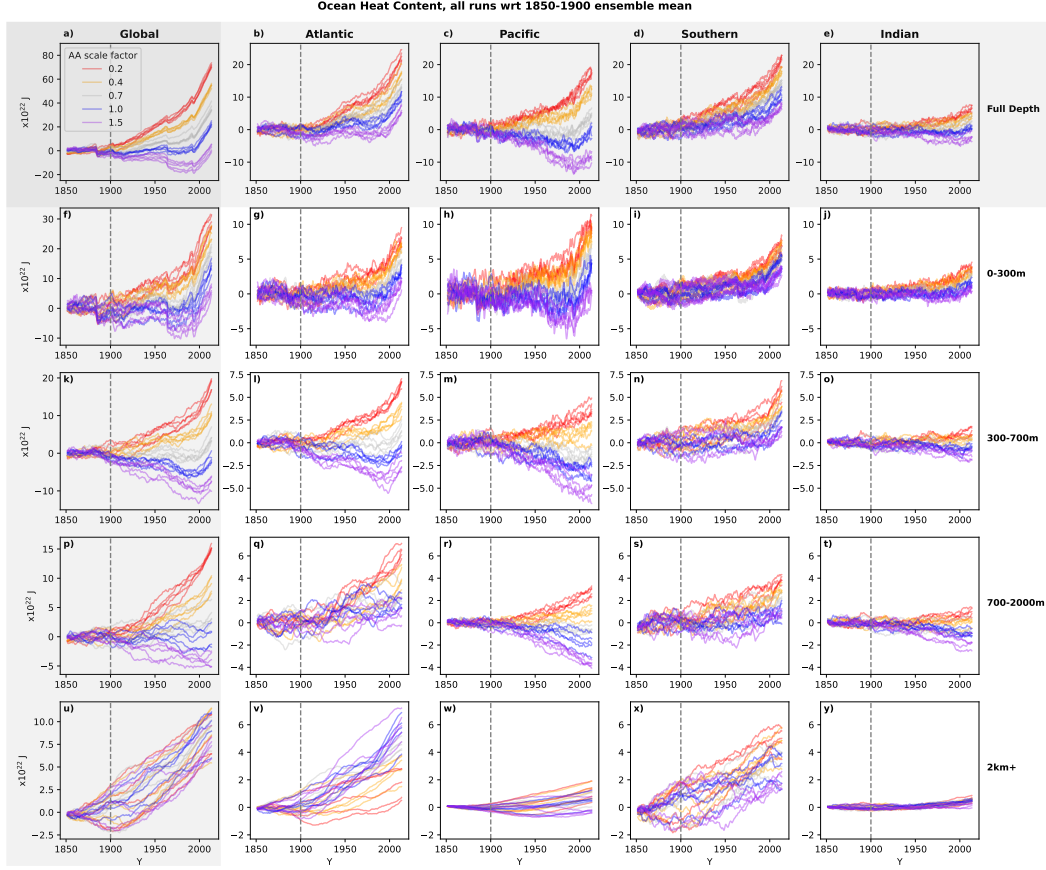


Figure 1. The sensitivity of ocean heat content to AA forcing factor varies by basin (column) and depth range (row). Each line represents the ocean heat content of a single ensemble member, relative to the 1850-1900 ensemble mean, with the AA forcing factor indicated by the colour (see legend). The four basin columns sum to the global column, and the four depth range rows sum to the full depth row.

Table 2. Linear correlations between changes in Ocean Heat Content 20 year means, from 1850-1870 to 1995-2015, and present day aerosol forcing magnitude, split by depth range and basin. R^2 indicates the square of the Pearson correlation coefficient, with bold indicating statistical significance at the 99% level. Slope indicates the slope of the linear fit, in units of $10^{22}\text{J/century}/(\text{W m}^{-2})$.

		Global	Atlantic	Pacific	Southern	Indian
Full Depth	R^2	0.99	0.94	0.98	0.96	0.95
	Slope	-40.5 ± 0.7	-9.8 ± 0.5	-15.6 ± 0.5	-8.3 ± 0.4	-4.9 ± 0.2
0-300m	R^2	0.98	0.99	0.96	0.86	0.96
	Slope	-15.0 ± 0.5	-4.3 ± 0.1	-6.2 ± 0.3	-2.2 ± 0.2	-1.9 ± 0.1
300-700m	R^2	0.97	0.97	0.94	0.87	0.87
	Slope	-14.8 ± 0.5	-5.3 ± 0.2	-5.1 ± 0.3	-2.5 ± 0.2	-1.4 ± 0.1
700-2000m	R^2	0.94	0.71	0.95	0.70	0.86
	Slope	-10.2 ± 0.5	-2.7 ± 0.4	-3.5 ± 0.2	-1.7 ± 0.2	-1.5 ± 0.1
2km+	R^2	0.04	0.69	0.45	0.74	0.27
	Slope	-0.6 ± 0.6	2.5 ± 0.3	-0.7 ± 0.2	-1.9 ± 0.2	-0.2 ± 0.1

gardless of AA forcing factor, Atlantic OHC exhibits clear multi-decadal variability around an overall warming trend. The Pacific and Indian OHC anomalies become negative in the latter half of the 20th century in the 1.0 and 1.5 simulations. Spatial variations in sensitivity to AA forcing magnitude are explored further in section 3.3.1

Considering contributions to global OHC by depth range, it is also apparent that the influence of AA forcing factor varies by depth. By 2015, the largest spread in global OHC anomalies at is at mid-depths (700-2000m, figure 1k, on the order of $30 \times 10^{22}\text{J}$), and the lowest is in the deep ocean (2km+, figure 1u, on the order of $4 \times 10^{22}\text{J}$), where there is overlap in ensemble members for the entire simulation.

Greater OHC sensitivity to AA forcing factor at mid-depths is also found when considering OHC by basin (figures 1g-j, l-o, q-t, v-y). As with full-depth OHC, the Atlantic and Pacific basins show the most sensitivity at upper and mid-depths, but the Atlantic and Southern oceans show the most deep ocean sensitivity, even if there is still considerable overlap between ensemble members. The depth dependence of the sensitivity of OHC to AA forcing magnitude is discussed more in section 3.3.2.

3.1.1 Centennial scale changes: linear analysis

Centennial scale changes in OHC in all basins and all depth ranges (apart from global 2km+ OHC) are significantly linearly correlated with the 2014 ERF. Table 2 gives the squared Pearson correlation coefficient (R^2) and slope of the linear fit for linear correlations between changes in 20 year mean OHC from 1850-1870 to 1995-2015 for all 25 ensemble members and the magnitude of the 2014 ERF strength given in table 1. We use the magnitude of the 2014 ERFs rather than the signed values in order that a negative correlation indicates stronger AA forcing leads to an decrease in OHC, which is more intuitive. Cooling at the surface of the ocean is expected when aerosols increase due to their radiative effects in the atmosphere (both through scattering and absorption of solar radiation and aerosol-cloud interactions), resulting in less shortwave radiation reaching the surface (Booth et al., 2012; Delworth et al., 2005).

As outlined in appendix Appendix A, we expect changes in globally integrated OHC to reflect the sensitivity of Ocean Heat Uptake (OHU) to anthropogenic aerosol forcing magnitude and any feedback effects on other forcings (equation A2). The R^2 of 0.99 for the linear dependence of centennial changes in OHU on AA forcing magnitude indicates that the impact of feedback effects and non-linear sensitivities are negligible on a globally integrated, centennial scale.

We expect changes in OHC for individual basins and depth ranges to reflect the sensitivity of ocean circulation to forcing magnitude, as well as changes in OHU and feedbacks (equation A4). Thus the slopes of the fit indicate the combined impact of OHU changes and circulation changes. The lower R^2 values for the individual basins and depth ranges indicate the relative importance of non-linear impacts, feedbacks on other forcings, and internal variability, on OHU and transport for these sub-domains.

The strength of the relationship (indicated by the slope of the linear fit) is strongest for the Pacific at all depths above 2000m, with the Atlantic slope overlapping in magnitude in the 300-700m range. In the deep ocean (2km+), the Atlantic and Southern OHC fits are similar in strength but opposite in sign – the 2km+ Atlantic OHC is the only volume to show a *positive* relationship between OHC and AA 2014 ERF magnitude, indicating increased AA forcing increases deep Atlantic OHC. This is linked with changes in the Atlantic Meridional Overturning Circulation (AMOC), as discussed in section 3.2.3. The Global deep ocean shows no significant linear relation with AA 2014 ERF on a centennial timescale, due to the Southern OHC, and, to a lesser extent, the Indian and Pacific OHC, which have *negative* linear relations with AA 2014 ERF magnitude, acting in combination to offset the Atlantic relation of the opposite sign.

While the linear fits show that the magnitude of trends in OHC on centennial scales are sensitive to aerosol forcing magnitude, there is considerable non-linear behaviour in many basins and at many depth ranges at decadal scales (figure 1). This is investigated further in the following section.

3.1.2 Centennial scale changes: non-linear analysis

In order to assess the sensitivity of multi-decadal variability in OHC to AA forcing magnitude, we fit a polynomial to the full-depth global and basin-wise OHC anomaly time series (figures 1a-e). The degree of polynomial was chosen by experimenting with different degrees and choosing the lowest order fit (to favour simplicity and avoid overfit) that provided a relatively small residual (at least one order of magnitude smaller than the fit). A fourth order polynomial fits these criteria well for global OHC and basin-wise OHCs (figures 2a-e), with multi-decadal variability captured by the polynomial fits and residuals an order of magnitude smaller (figures 2f-k).

To determine the dependence of the multi-decadal variability on AA forcing magnitude, we perform a principle component analysis over the multi-ensemble dimension of the 25 polynomial time series shown in figures 2a-e. The form of the first and second principle components for the global and basin-wise polynomial fits are shown in figures 2k-o. The analysis indicates differences in multi-decadal linear trends between ensemble members is driven almost entirely by differences in aerosol forcing magnitude: The first PCs (blue lines) take the form of multi-decadal linear trends, explain 99% of the global variance (and at least 92% in the basins), and the weights of the first PCs are extremely significantly correlated with AA forcing magnitude for all basins and globally ($R^2 \geq 0.95$). Indeed the form of the first PC resembles the form of the effective radiative forcing time series, which shows an increasing positive trend towards the end of the time period (Dittus et al., 2020). The ERF time series includes all forcings, with the prominent increase in the ERF time series primarily due to GHGs. The overall shape of PC1 mainly reflects the impact of GHG forcing, while the fact that the weights are highly correlated with the AA ERF indicates that the time series is modulated by AA.

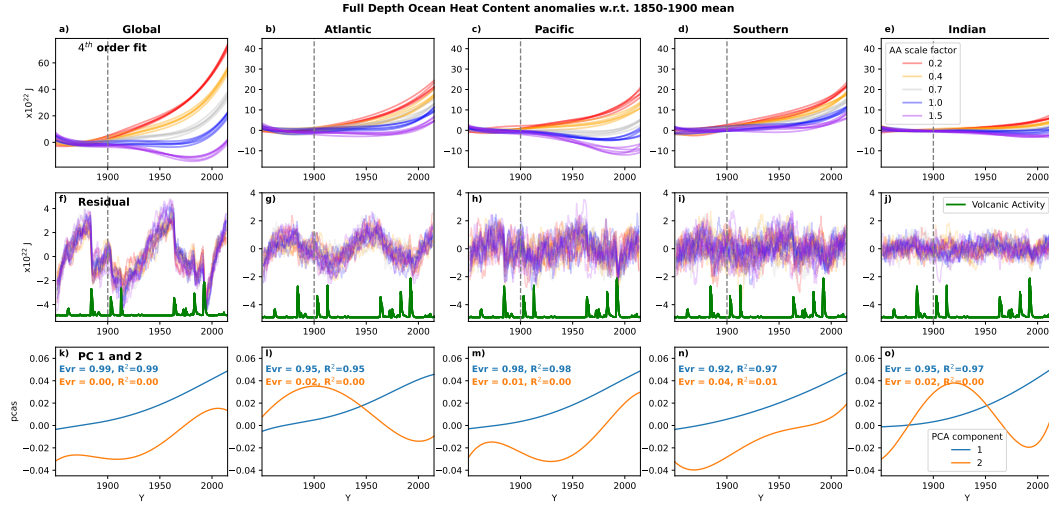


Figure 2. Multi-decadal linear trends are sensitive to AA factor, but annual to decadal variability is largely independent of AA forcing magnitude. Panels a-e show 4th order polynomial fits to ocean heat content anomalies w.r.t. 1850-1900 ensemble means, globally and by basin (figures 1a-e), for all ensemble members. Colours indicates the AA forcing factor (see legend). Panels f-j show the residual ocean heat content, calculated by subtracting the 4th order fits (a-e) from the same ocean heat content anomalies, and smoothed with an 18 month low-pass Butterworth filter. The green line is a proxy for volcanic forcing, which is the same for all ensemble members, see text for details. Panels k-o show the form of the first and second principle components of the 4th order fits in a-e. The explained variance (Evr) and correlations of the PC weights with AA ERF (R^2) are shown in each panel.

Differences in multi-decadal non-linear variability, represented by the second PC (orange lines in figures 2k-o), are responsible for very little of the differences between the OHC time series, explaining maximum 4% of the variance, and the weights of the second PC are not significantly correlated with AA forcing magnitude ($R^2 \approx 0$). This indicates that AA forcing magnitude does not drive differences in multi-decadal non-linear variability in large scale OHC, and therefore differences in multi-decadal non-linear variability are driven by other forcing factors (kept constant in these ensembles).

Differences across the scaling ensembles in the residuals (figures 2f-k) are small, indicating that sub-decadal OHC variability (as defined here by the residuals of the 4th order polynomial fit) is not primarily driven by differences in AA forcing magnitude in this model. Small/some differences on these timescales may exist (e.g. following volcanic eruptions) but are not investigated further here.

Sharp drops in OHC are associated with spikes in volcanic activity (figures 2, thick green lines), consistent with Church et al. (2005); Gleckler et al. (2006). Additionally, there is a circa 70 year periodic feature in the global OHC residual, also apparent in the Atlantic and Pacific OHCs to lesser degrees. These could be the result of a fitting artefact, or indicative of residual modes of multi-decadal internal variability such as the Atlantic Multidecadal Oscillation (AMO) (Deser et al., 2010) and/or the Interdecadal Pacific Oscillation (Parker et al., 2007), although it should be noted that Mann et al. (2021) argue that the AMO is entirely driven by volcanic forcing and not internally generated. The amplitude of the periodic feature is small compared with the multi-decadal variability in the polynomial fits, so we have not investigated further.

3.2 Ocean Heat Content Trends

Time series of Ocean Heat Content trends were calculated from the OHC as defined in equation 1s as follows: At each time series point, a centred 30 year linear regression was calculated. For the model OHC, we used the *linregress* function from the *scipy* python library (Virtanen et al., 2020). For the observed OHC, we used the *WLS* function from the *statsmodels* python library (Seabold & Perktold, 2010), with the weights= $1/\sigma_E^2$, where σ_E is the standard error provided with the observations. Both functions provided a standard error in the linear slope, as well as the slope itself.

3.2.1 Ocean Heat Content trends vs observations

In order to compare our modelled OHC with those from observations (WOA18 and IAP17, see section 2 for details), we calculated OHC trends for 0-700m and 0-2000m. Absolute values of simulated OHC are less likely to match observations, and the uncertainty in observations increases at earlier times due to measurement sparsity, whereas trends have relatively lower uncertainty, even when taking the uncertainty at individual times into account. The standard error provided with the observational datasets do not take into account all sources of uncertainty (Wang et al., 2018; Carton & Santorelli, 2008), and so we show two different products to indicate the magnitude of additional uncertainty.

The time series of simulated OHC trends (coloured lines, figures 3a-j) and observed trends (black solid and dashed lines, figures 3a-j) have standard errors one or two orders of magnitude (respectively) smaller than the OHC trends themselves, and so are not shown.

Both 0-700m and 0-2000m simulated OHC trends drop to a local minimum at around 1965 (representing the trend for 1950-1981), even becoming negative for the larger forcing factors, indicating ocean heat loss from these depth ranges to either the atmosphere or greater depths. This corresponds to the period with the greatest increase in aerosols (Dittus et al., 2020). From 1965 on, OHC trends for both depth ranges increase for all forcing factors, peaking at the end of the simulation. This is consistent with the form of the GMST

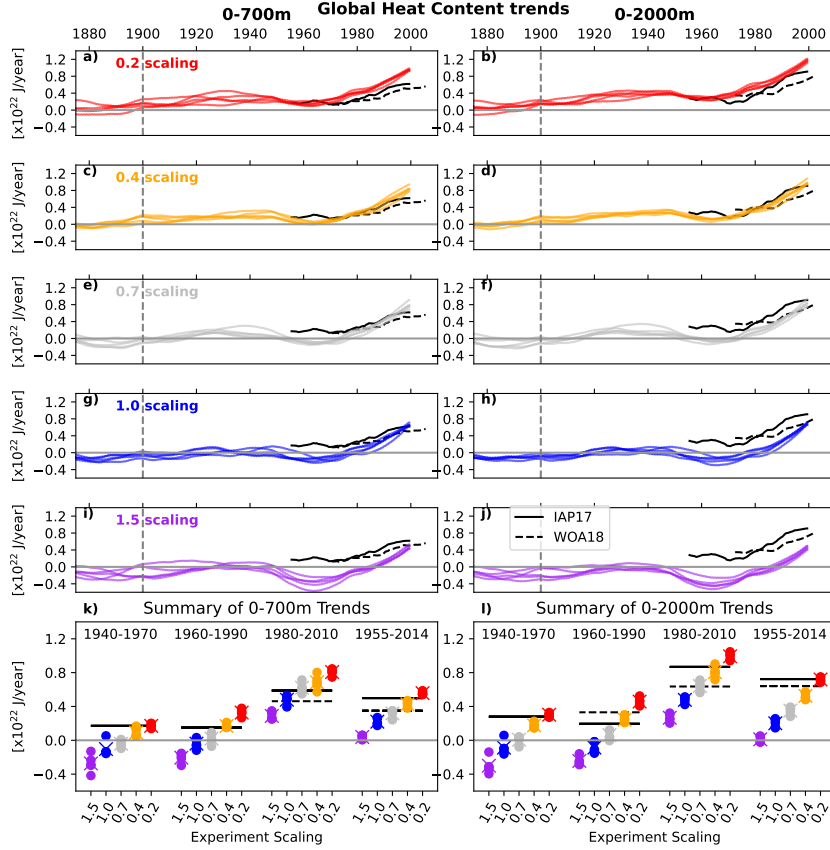


Figure 3. Observations of OHC trends are inconsistent with the 1.5 forcing factor for the period 1980-2010, and with both 1.0 and 1.5 for the periods 1940-1970 and 1960-1990. Panels a-j show OHC trends over time, by ensemble member (colour) and depth range – 0-700m (a,c,e,g,i) or 0-2000m (b,d,f,h,j). The black solid lines are derived from ocean heat content observations from IAP17, the black dotted lines from WOA18. Panels k and l summarise the upper panels by taking data points from three, 30-year periods (1940-1970, 1960-1990, 1980-2010), as well as for one 70-year period covering 1955-2014. Coloured dots indicate ensemble members, coloured crosses ensemble means, and black lines observations as before.

time series in Dittus et al. (2020), which show faster than observed warming from 1990 onwards. Dittus et al. (2020) suggest this could indicate a possible warm bias in the transient climate response (TCR) of the model.

The observational OHC trends vary less than the simulated OHC trends: both are relatively flat until around 1970-1990, when they begin to increase, with the IAP17 dataset beginning to rise before the WOA18 dataset in both depth ranges (figures 3a-j). The 0.4 and 0.7 scaling trends show the most similarity to one or other of the observations for many decades in both depth ranges. The 0.2 and 1.0 scaling trends show some similarity at the start or ends of the observational time series. The 1.5 scaling trends are the only to not match observations in any time period or depth range. This is summarised in figures 3k and l, which show the linear trends for 1940-1970, 1960-1990, 1980-2010, and a single 70-year trend for 1955-2014.

Overall, the observations imply a scaling of 0.2-0.7 for the periods 1940-1980. From 1980 onwards, the 0-700m observations imply a scaling of 0.4-1.0, and the 0-2000m observations imply a scaling of 0.2-0.7. This is consistent with the results of (Dittus et al., 2020), who also find the 0.4 and 0.7 scaling simulations match observations of global mean surface temperature, even when accounting for the warm bias in the model's TCR.

Anthropogenic aerosols are not evenly distributed around the planet (Stern, 2006), thus changes in the forcing factor will amplify/dampen regional differences and the resultant impacts on OHC. To further investigate the regional sensitivity of ocean heat content to aerosol forcing magnitude, we look at spatial patterns in both latitude/longitude (section 3.2.2) and latitude/depth (section 3.2.3).

3.2.2 Depth-integrated Ocean Heat Content trends

To investigate the spatial distribution of OHC trends in the SMURPHS ensemble, we calculate trends in full-depth integrated OHC using linear regression as in section 3.2.1 at every latitude and longitude point for the 30 year periods 1960-1990 (figure 4a) and 1980-2010 (figure 4b). Globally, the simulations show relatively low OHC trends in 1960-1990, and relatively high OHC trends in 1980-2010 (as in figure 3). Figure 4 shows the global ensemble mean trends, regional plots of the trends in the North Atlantic and Southern Ocean for each ensemble member can be found in figures S1 and S2.

The dipole of OHC trends in the North Pacific and broad North Atlantic warming in 1980-2011 is consistent with observations of trends in 0-300m OHC from ocean state estimates (Meyssignac et al., 2019). The strong OHC trends in the Southern Ocean is consistent with observations of strong abyssal warming at 2000m+ in the Southern Ocean (Desbruyères et al., 2016; Purkey & Johnson, 2010).

The 1.0 and 1.5 factor simulations show significant regions of negative OHC trends, covering large areas in 1960-1990, then mostly confined to the tropical Pacific in 1980-2010, indicating that heat is being lost and/or redistributed from these regions and time periods.

Overall, the spatial patterns of OHC trends can be seen to depend on time period, AA forcing factor, and on ensemble member (ensemble member standard deviation is shown by the grey contours in figure 4). The sub-polar North Atlantic, in particular, shows extremely large variability between ensemble members, with variability peaking around the path of the Gulf Stream. During 1960-1991, different ensemble members with the same forcing factor show opposite-signed patterns of OHC trends (Figure S1). In 1980-2011 the pattern is slightly less variable, with broad warming and a cold hole, which appears most often south of Iceland, but there are still large variations in the pattern size and location.

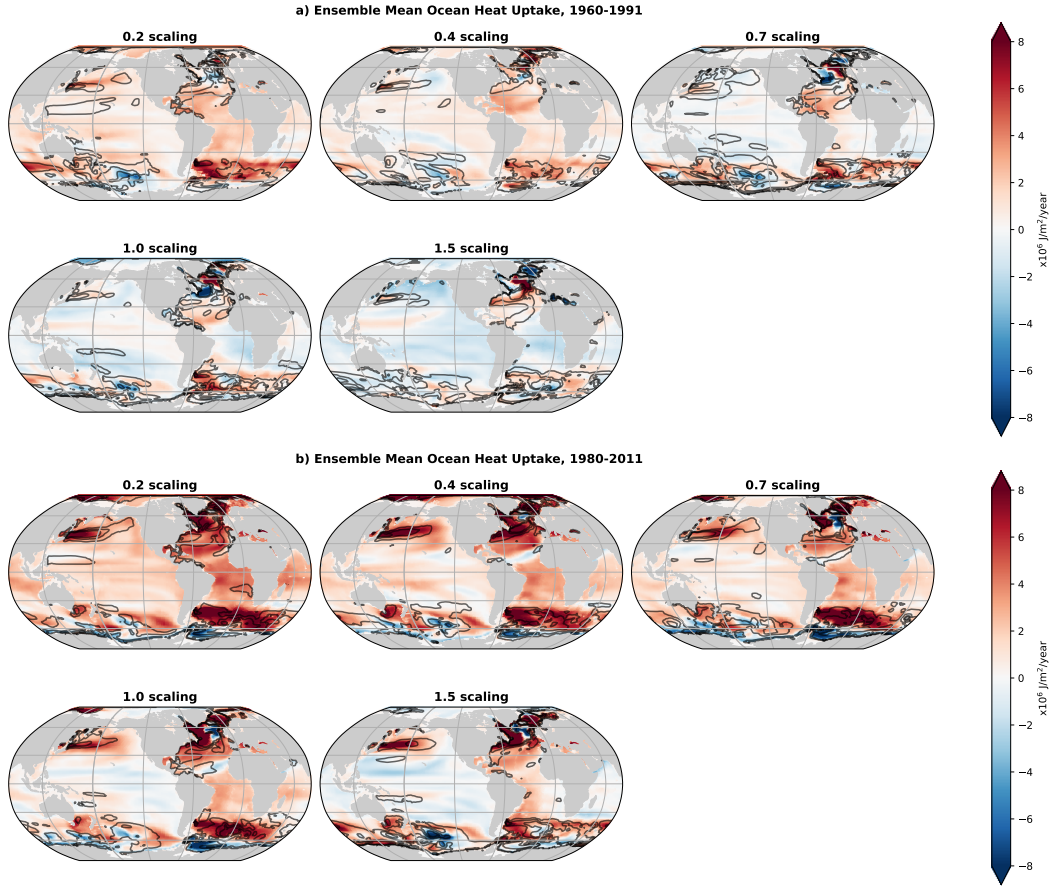


Figure 4. Spatial patterns of depth-integrated OHC trends vary by ensemble member, by AA forcing factor, and time period. Colours indicate the ensemble mean depth-integrated OHC for each forcing factor for (a) 1960-1991 and (b) 1980-2011. Grey contours indicate the ensemble standard deviation, at 0.1, 0.2 and 0.3 J/year.

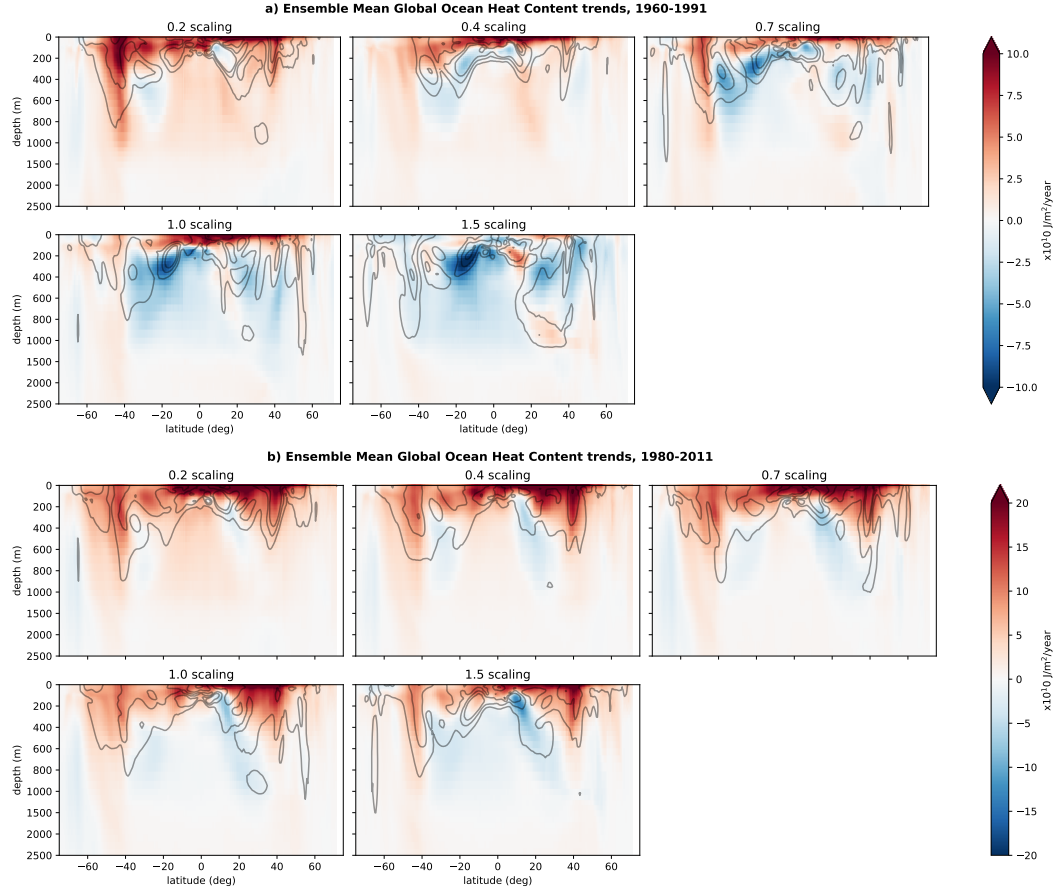


Figure 5. Patterns of zonally-integrated OHC vary by ensemble member, by AA forcing factor, and time period: Colours indicate the ensemble mean zonally-integrated OHC trends for each forcing factor for (a) 1960-1991 and (b) 1980-2011. Grey contours indicate the ensemble standard deviations at 2, 3.5, and 5 $\text{J/m}^2/\text{year}$ (a) and 2, 4, and 6 $\text{J/m}^2/\text{year}$ (b). Note that depth intervals are not constant, and colour axis limits in b) are twice those in a).

3.2.3 Zonally integrated Ocean Heat Content trends

Looking at how OHC trends vary with latitude and depth (figure 5), we see upper 200m warming dominates, especially in 1980-2011. Warming extends deeper in the Southern Ocean and in the Northern mid-latitudes for 1980-2011. Surface cooling is present in the 1.5 forcing scenario in places during 1960-1991, but is confined to 200m+ in all other scenarios and in 1980-2011. Figure 5 shows ensemble mean trends, figures S3-S6 show the trends by ensemble member for each basin.

The near-surface warming is stronger in the Northern Hemisphere for all forcings and both time periods. This asymmetric warming is also seen in observations (Zanna et al., 2019) and other models (Collier et al., 2013; Cai et al., 2006). This is due to the asymmetric forcing of AA, which is stronger in the Northern Hemisphere, cooling the surface more and inducing an increased transport of heat northward across the equator.

The pattern of OHC trends in the upper 700m are dominated by the contributions from the Pacific and Atlantic (see figures 1g,h, S3, S4), and are characterised by near-surface warming, and subsurface cooling in tropics, either north or south of the equator.

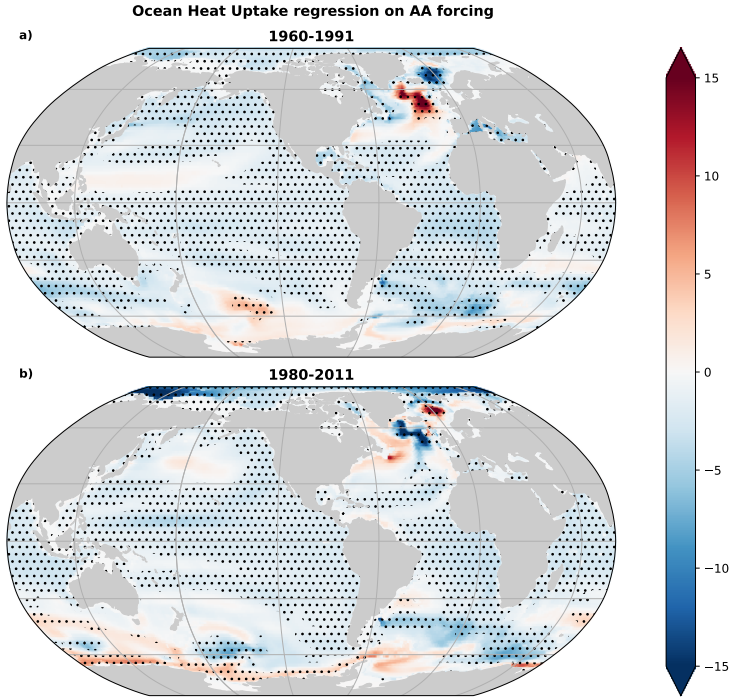


Figure 6. Ocean heat content trends are linearly sensitive to AA forcing magnitude in the tropics and east-basin sub-tropics: Colours indicate the regression of a) 1960-1991 or b) 1980-2011 OHC trends on 2014 AA ERF magnitude for all 25 ensemble members. Stippling indicates where the trend is statistically significant using the student T-test.

tor depending on time period. The strength of these warming and cooling signals is dependent on AA forcing magnitude.

At mid-depths (700-2000m) the Southern Ocean and Atlantic dominate, but there is considerable ensemble member variability in the 1960-1991 period (see figure 1q,s). Different ensemble members show opposite-signed zonally-integrated OHC trends in the same time periods (see figures S3,S6), as do patterns of depth-integrated OHC trends (see section 3.2.2).

3.3 Sensitivity of OHC trends to Anthropogenic Aerosol Forcing Factor

3.3.1 Depth-integrated OHC trend sensitivity to Aerosol Forcing Factor

In order to more robustly assess the impact of changing AA forcing factor on the OHC trends calculated in section 3.2.2, we regress the depth-integrated OHC trends for all 25 ensemble members against the AA effective radiative forcing magnitude for each experiment (table 1) at each latitude-longitude point. Figure 6 shows (in colour) the slopes of this regression for 1960-1990 and 1980-2010, with stippling showing where the regression is significant according to the student T-test.

In other words, the impact of increased aerosol forcing magnitude on OHC trends across all ensemble members is shown, independent of other forcings (which are identical across all experiments). As it is a linear regression, this will not reflect non-linear effects. Such effects might include processes or regions that are in some way saturated

with respect to OHC, such that increasing the radiative forcing beyond a certain magnitude does not result in an increase in OHC trends, but decreasing radiative forcing results in a decrease in OHC trends, or the converse. Additionally, regions where the variability in OHC trends is large compared to the dependence on anthropogenic aerosol forcing magnitude within the bounds tested in these simulations will fail the significance test.

There is broad negative linear sensitivity of OHC trends to aerosol forcing magnitude across much of the tropics and sub-tropics, indicating increasing the forcing magnitude results in a reduction in OHC trends in these regions, with a magnitude of $2\text{--}5 \times 10^{-6}$ [J year⁻¹]/W in both time periods, with peaks in dependence at high latitudes. There are a few patches of positive linear sensitivity, notably in the sub-polar (1960-1991) or polar (1980-2011) North Atlantic, and close to Antarctica.

The sub-polar North Atlantic and Southern Ocean show regression patterns that differ between the two time periods, and both show large regions without statistical significance, likely because these regions have strong internal variability (figure 4). The strongest dependence on forcing magnitude is found in a dipole pattern centred over Iceland, which does show statistical significance and is of opposite signs in the two different time periods. The depth-dependence of the regression of OHC trends on aerosol forcing magnitude is discussed in section 3.3.2, and possible links with the overturning circulation are discussed in section 4.

The North Pacific is another region where the regression differs between 1960-1991 and 1980-2011. Similarly to the North Atlantic and Southern Oceans, the North Pacific is an OHC trend hotspot and a region of strong internal variability in 1980-2011 (figure 4b), and not linearly dependent on AA forcing magnitude by our test (figure 6b). Overall, the patterns of OHC trend regression on forcing magnitude in the North Pacific are very similar to the patterns of surface air temperatures (SAT) regressions from 1951-1980 and 1981-2012 (see Dittus et al. (2022) their figure 8).

The SAT regression in 1981-2012 resembles a negative Pacific Decadal Oscillation, and this link is investigated in Dittus et al. (2022) in both the SMURPHS ensemble and other CMIP6 GCMs. They conclude that AA can induce an increase in North Pacific sea-level pressure (SLP) which promotes a negative PDO in this time period. This introduces a relative cooling in the North Pacific surface air temperature in the same regions where we find significant OHC trend regression on forcing magnitude. They also note a high level of internal variability in the North Pacific SLPs in the SMURPHS ensemble and other GCMs, consistent with the high OHC trend variability in this region that we find in the SMURPHS ensemble.

Overall Pacific SATs in the SMURPHS ensemble warm in 1981-2012 in all but a few patches, due to stronger GHG forcing than AA forcing in this time period (see Dittus et al. (2022) figure 4) which is reflected in the warming of the upper 200m of the ocean in the same time period (figure 1). However, both the 1.0 and 1.5 scaling ensembles shows overall negative OHC trends for large parts of the Pacific (figure 4b), which is due to negative OHC trends in mid-depths (figures 1m,r, S3). The depth-dependence of the OHC trends regression on aerosol forcing magnitude is addressed in the next section.

3.3.2 Zonally-integrated OHC trend sensitivity to Aerosol Forcing Factor

Regressing the zonally-integrated OHC trends against the 2014 AA ERF, as in section 3.3.1, indicates how the impacts of aerosol forcing strength vary with depth, figures 7a-d. The regressions are generally negative outside of the polar regions and above ~ 1500 m for both 1960-1991 and 1980-2011. However, the strength of the regression varies with depth, time period, and basin. As before, where there is no stippling (indicating statistical significance of the linear regression), then either internal variability is dominant,

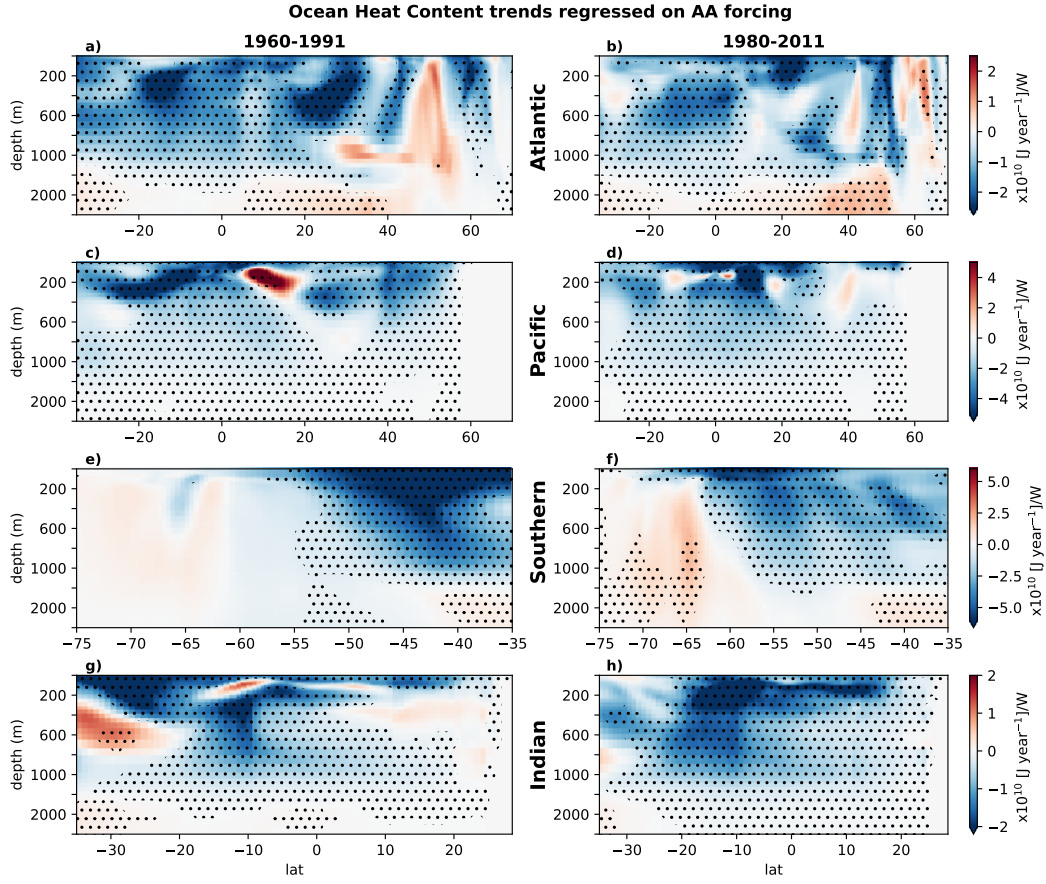


Figure 7. The sensitivity of Ocean Heat Content trends to aerosol forcing magnitude varies with basin, depth, and time period: Colours indicate the regression of a) 1960-1991 or b) 1980-2011 zonally-integrated OHC trends on 2014 AA ERF magnitude for all 25 ensemble members. Stippling indicates where the trend is statistically significant using the student T-test. Note that depth intervals are not constant, and the colour bar limits vary with basin.

there is non-linear dependence on aerosol forcing magnitude, or another forcing term is dominant.

The Pacific (figure 7b) shows the strongest magnitude dependence on aerosol forcing magnitude above $\sim 500\text{m}$, and dominates the overall global pattern (not shown) at these depths. There are strong subsurface patches of negative sensitivity in the tropics either to the south (1960-1991) or north (1980-2011) of the equator. There are also subsurface patches where the regression is positive but not significant in both time periods. The latitudes of these patches coincide with the latitudes of non-significant patches in depth-integrated Pacific OHC trends (see figure 6).

The high-latitude Atlantic and Southern Oceans (figures 7a and c respectively) show stronger dependence on aerosol forcing magnitude at depths of $\sim 1000\text{m}+$ than in other basins. Both regions show a dipole structure at depth, where negative sensitivity switches to positive sensitivity below $\sim 1500\text{m}$, indicating increased aerosol forcing magnitude is resulting at deep warming.

The dipole of positive and negative sensitivities centred on Iceland seen in the depth-integrated OHC regression (figure 6c,d) can be seen to extend to depth in the zonally-integrated OHC trend regressions (figure 7a,b). There is no significance in the zonally-integrated regression in the positive patch at $\sim 50\text{N}$ in 1960-1991, whereas there is in the depth-integrated OHC regression, likely because this patch of significance is limited to the east of the sub-polar North Atlantic.

Similarly to the Atlantic, in the Southern Ocean, increased aerosol forcing counteracts the effects of GHG, leading to less heat convergence at 40S , an effect that is most pronounced in 1960-1991 (figure 7e,f). There increased loss of Antarctic sea ice extent in the model in 1981-2011 in both summer and winter (see figure S8), which is slowed by increased aerosol forcing when considering the ensemble means, although there is large internal variability. Increased sea ice cover leads to relative cooling at the surface close to the continent and warming at depth as the production of dense water is slowed (figure 7f).

4 Discussion

4.1 Large-scale changes

4.1.1 Multi-decadal variability

We find that aerosol forcing magnitude is responsible for changes in multi-decadal global ocean heat content linear trends at global and basin-wide scales ($R^2 \geq 0.92$), but that interannual to multi-decadal variability is relatively insensitive to forcing magnitude.

The reason we do not see changes in multi-decadal non-linear variability in our ensemble may be because the overall ERF time series (including all forcings) does not show a lot of multi-decadal variability, instead showing large interannual variability and long-term linear trends. It also may be that the impacts of multi-decadal variability are confined to near the surface, and don't impact on depth-integrated OHC. This would be consistent with the results of Qin et al. (2020) who find multi-decadal variations of volcanic aerosols and AA are responsible for multi-decadal variations in SSTs in all three major ocean basins, using models and observations.

4.1.2 Comparison with observations

Trends in 0-700m ocean heat content are most consistent with observations for the 0.4-1.0 scaling experiments, consistent with Dittus et al. (2020), who find the 0.4 and

0.7 scaling experiments most consistent with GMST observations. Trends in 0-2000m ocean heat content are most consistent with observations for the 0.2-0.7 experiments. This inconsistency between the different depth ranges is likely due to a combination of factors. First, discrepancies in the model's representation of reality, both in terms of impacts of anthropogenic aerosols on OHU and circulation changes. Secondly, as discussed in section 3.2.1, uncertainties in observations of OHC are not fully quantified and so it may be that the true uncertainty in observations spans the same forcing factors.

4.2 Regional Changes

Regional changes in OHC due to changes in aerosol forcing are due to a combination of changes in ocean heat uptake and ocean transport. Increased aerosols in the atmosphere decreases shortwave radiation which leads to a relative cooling at the surface of the ocean which can then be transported into the interior. Indeed we find over large parts of the ocean, particularly the tropics and sub-tropics, that the impact of increased aerosol forcing magnitude is a fairly uniform linear cooling of depth-integrated ocean heat content (figure 6).

Changes in ocean heat transport can be caused by direct changes in radiative forcing and subsequent changes in winds and fresh water forcings. Even if anthropogenic aerosols were spatially uniformly distributed, the impact of changes would not be spatially uniform due to the impacts of ocean circulation. The impact of ocean circulation changes can be seen most clearly in the polar regions, where the vertical limbs of the global meridional overturning circulation are located. Zanna et al. (2019) demonstrate that up to 50% of the increase in ocean heat stored in the mid-latitude Atlantic is due to transport changes. The impacts of increased aerosol forcing magnitude on depth-integrated OHC in these regions contains regions of warming, and are stronger than in other regions (especially in the Atlantic), and highly variable (figure 6), all likely due the additional impacts of heat convergence/divergence. The increased vertical transport in these regions leads to a stronger impact of aerosol forcing changes at depths (figure 7).

Thus, while we expect the impact of aerosols on ocean heat content to be non-uniform spatially, we might expect that the impact is similar at different times. In fact, we find that the regional impacts can vary significantly with time period. We focus in this paper on two 30-year periods near the end of the historical simulation (1960-1991, 1980-2011), both because they are the time periods with most observations and because the model behaviour is different in both periods - 1980-2011 sees a strong acceleration of global warming with subsequent impacts on cryosphere (Dittus et al., 2020; Andrews et al., 2020), shows a reversal in the trend in Atlantic Multidecadal Variability (AMV) (see Andrews et al. (2020) and figure S7), an increase in the trend of equivalent radiative forcing from all sources (Dittus et al., 2020), although there are significant regional variations (Dittus et al., 2022) and the overall AA forcing is stable in this period. Indeed, Andrews et al. (2020) link the change in AMV (and AMOC) trend sign in the standard historical forcing simulation (our 1.0 forcing case) with regional variations in aerosol forcing. We now discuss the differences between the two forcing periods and how they compare with literature for the three basins that show the largest trends in OHC and largest sensitivities to AA ERF magnitude: the Atlantic, Pacific and Southern Oceans.

4.2.1 Atlantic

The deep warming at 2000m+ response to increased AA ERF scaling in both time periods (figures 6a,b) is indicative of the vertical limbs of the meridional overturning circulation at the poles bringing the impacts of changing aerosols deeper. This is confirmed by the aerosol dependence of the AMOC strength, see figure S7, showing stronger aerosol-induced cooling strengthens the AMOC and relatively warms the depths. This is con-

sistent with the results of Collier et al. (2013); Cai et al. (2006), who similarly find a strengthening AMOC in response to aerosol forcing in other GCMs.

Whilst we find a link between increased AA forcing factor and AMOC strength in both time periods, there appears to be a different link between AA forcing factor and AMOC trends - for forcing factors 0.2-1.0, we see an increase in AMOC trend with increasing AA forcing factor in 1960-1991 (although this doesn't hold for the 1.5 forcing case, see figure S7). In 1980-2011, the opposite relationship is found - increasing the AA forcing factor leads to a decreasing AMOC trend i.e. an increasingly negative trend ($R^2 = 0.22$). So the effect of increasing AA forcing strength seems to be state dependent and highly variable. We hypothesise there is an AA-driven increase in the AMOC in the period 1960-1991, on a background of aerosol increasing. Then, in 1980-2011, there is a GHG-driven decline, with the strength of decline being modulated by aerosol in the experiments.

During the period 1960-1981, the pattern of depth-integrated OHC sensitivity to aerosol forcing magnitude (figure 6a) strongly resembles the pattern of depth-integrated temperature trend response to aerosols in historical low-resolution gcm simulations up to the year 2000 in Cai et al. (2006) (their figure 4), with strong warming south of Greenland and cooling in the south Atlantic. They attribute this to an increase in the AMOC in response to aerosol forcing, which we also find (figure S7). Collier et al. (2013) look at projected Atlantic changes out to 2100 in a gcm, and find a similar pattern of increased SSTs south of Greenland due to a strengthened AMOC.

During the period 1980-2011, we still see relatively strong cooling in the south Atlantic in response to increased AA forcing magnitude, but we no longer see warming south of Greenland (figure 6b). Instead, the regression in this region resembles the pattern of OHC trends in the simulations (figure 4), with a 'warming hole' south of Greenland, linked in Liu et al. (2020) to a *slowing* of the AMOC, consistent with the dependence of AMOC trend on AA forcing magnitude (figure S7). We still see an increase in warming at depth in the north Atlantic (figure 7b) but the upper ocean heat content response to increased aerosols appears to be under the influence of multiple interacting and possible competing processes - a strengthened but decreasing AMOC, a strong slowing in the loss of Arctic sea ice (Dittus et al., 2020), and changes in NH aerosol composition with North American and European emissions dropping against a background of increasing Asian emissions (Dittus et al., 2022).

4.2.2 Pacific

In the Pacific, Cai et al. (2006) find the inclusion of aerosols in historic gcm simulations induce a cross-equatorial overturning circulation, with northward transport at the surface and southward transport down to circa 800m depth, inducing warming north of the equator and cooling south of it. This resembles the pattern of OHC sensitivity to aerosol forcing magnitude in 1960-1981, both depth-integrated (figure 6a) and zonally integrated (figure 7c). In 1980-2011 the Pacific regression pattern is instead dominated by a PDO-like signal, linked by Dittus et al. (2022) to a surface pressure response to increased aerosol forcing, possibly triggered by a Rossby wave response to increased Asian aerosol emissions since the 1980s.

4.2.3 Southern Ocean

The warming at depth to the north of the Southern Ocean in both time periods in response to increased AA ERF magnitude is likely linked to the slowing of the global meridional overturning circulation, as indicated by the changes in the AMOC discussed above.

In the Southern Ocean in 1960-1991 (figure 7e), we see a strong cooling pattern that is the opposite of the GHG-induced trends in Southern ocean heat storage (Liu et al., 2018) - strong surface cooling north of 55S and a concentration of strong cooling at 40S-45S in the upper 1000m due to weakening of the overturning circulation. This is consistent with a negative SAM-like pattern in the regression of SLP against aerosol forcing found in this time period in Dittus et al. (2022) (although not statistically significant), implying decreasing zonal winds. However, Steptoe et al. (2016) find a similar negative response in the SAM to AA changes in CMIP5 models is not robust and model-dependent.

In 1980-2011, we instead see a concentration of surface cooling at 60N, and less relative cooling in the interior. This could be due to the contribution of warming at these latitudes in the Indian sector (figure 6b). This may also be influenced by the positive SAM-like response to aerosol forcing in this time period (Dittus et al., 2022), which acts to increase the wind-induced overturning circulation, strengthening the GHG induced effects and relatively warming the interior, although there is still a cooling effect of aerosol forcing overall. Additionally, there is an increased dependence of Antarctic sea ice extent on aerosol forcing magnitude in 1980-2011 compared to 1960-1991 (figure S8), leading to statistically significant effects close to the continent due so slowed sea ice loss (surface cooling and warming at depth).

5 Summary

Using a unique ensemble of 25 simulations of the historical climate with five different anthropogenic aerosol forcing time series, we have been able to determine the influence of aerosol forcing magnitude on ocean heat content in a CMIP6-era gcm. We find that the 20th century global ocean heat uptake sensitivity to anthropogenic aerosol forcing magnitude is $-40.5 \pm 0.7 \times 10^{22} \text{ (J century}^{-1}\text{)} / \text{(W m}^{-2}\text{)}$ for the HadGEM3-GC3.1-LL model. Centennial changes in the OHC of the major ocean basins and globally integrated depth ranges above 2000m also show significant linear dependence on AA forcing magnitude ($R^2 \geq 0.94$), indicating that the impact of non-linear effects and feedbacks from other forcings are negligible. We find that aerosol forcing magnitude is responsible for changes in multi-decadal global ocean heat content linear trends at global and basin-wide scales ($R^2 \geq 0.92$), but that interannual to multi-decadal variability is relatively insensitive to forcing magnitude.

Trends in 0-700m ocean heat content are most consistent with observations for the 0.4-1.0 scaling experiments, consistent with Dittus et al. (2020), who find the 0.4 and 0.7 scaling experiments most consistent with GMST observations. Trends in 0-2000m ocean heat content are most consistent with observations for the 0.2-0.7 experiments.

We find significant the responses to increased anthropogenic aerosol strength is significantly dependent on region and time period. In general, the strongest responses are found in the regions where there are the strongest trends in OHC, specifically the North Atlantic, Southern, and upper Pacific Oceans. The responses in these regions are summarised in figure 8.

The difference in aerosol sensitivity in the different time periods implies a strong state dependence of the aerosol impacts on OHU, such that the impact of aerosols forcing changes on OHU is different depending on a combination of some or all of: the ocean, atmosphere, and cryosphere state; the magnitude and distributions of other forcings (GHGs, volcanic, natural aerosols); the magnitude of the aerosol forcing itself (the ERF is generally higher and increasing for all forcing factor experiments in 1980-2011 compared with 1960-1991, see Dittus et al. (2020) figure 1b).

Our results give, for the first time, a well-constrained estimate of the dependence of historic global ocean heat uptake on aerosol forcing magnitude. Our results suggest

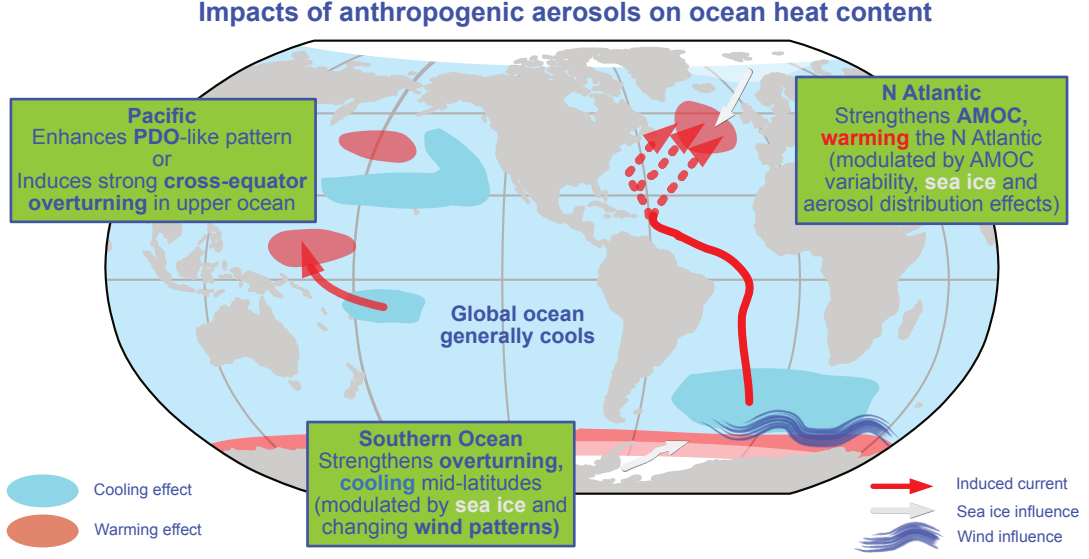


Figure 8. Schematic outlining the impacts of increasing anthropogenic aerosol forcing magnitude on historic ocean heat content in a CMIP6-era global climate model.

that ocean heat content could potentially be used to constrain the estimate of the true aerosol forcing magnitude, but that accurate and sustained measurements would be required.

We find show that there is significant regional and decadal variability in the sensitivity of ocean heat content to aerosol forcing magnitude in regions of high ocean heat uptake. The strong state dependence means that careful process based studies are required to disentangle the various mechanisms at play that determine the overall regional impact of aerosol forcing in different time periods.

6 Appendix

Appendix A Drivers of Changes in Ocean Heat Content

Ocean heat uptake (OHU) is defined as the globally integrated ocean temperature trend, i.e. the trend in global OHC. In a climate at equilibrium, time-integrated OHU would tend to zero. A non-zero time-integrated OHU is therefore due, at first order, to changes in the major climate forcings - green-house gases (GHGs), anthropogenic aerosols (AA), volcanic and other natural aerosols (NA) - as well as internal variability (IV) and feedbacks proportional to atmospheric temperatures T :

$$\text{OHU} = f(\Delta\text{GHG}) + g(\Delta\text{AA}) + h(\Delta\text{NA}) + \text{IV} - \lambda.T, \quad (\text{A1})$$

where f, g, h are functions representing the impact of the relevant processes on OHU, and λ the strength of temperature feedbacks. If we hold GHG and NA levels constant (as in the SMURPHS ensemble), and look at sufficiently long timescales, then we can estimate the linear sensitivity of OHU to AA:

$$\frac{\Delta\text{OHU}}{\Delta\text{AA}} = \frac{\Delta(\text{Global OHC})}{\Delta\text{AA}} \approx g' + \text{feedback effects}, \quad (\text{A2})$$

neglecting higher order terms, where averaging over ensemble members removes the impact of internal variability.

However, if we look at trends of OHC over a sub-domain, for example a single basin or depth range, or integrated in one or two spatial dimensions only, then the trend in OHC (sometimes termed ocean heat storage, OHS) has contributions from both OHU and the convergence or divergence of ocean heat transport:

$$\frac{\partial}{\partial t} \text{OHC} = \text{OHU} - \nabla \cdot \text{OHT}, \quad (\text{A3})$$

Thus, changes in the OHC of sub-domains are not solely determined by climate forcings and their feedbacks, but also depend on ocean circulation changes in response to AA. Again, if looking at sufficiently long timescales and neglecting higher order terms,:

$$\frac{\Delta \text{OHU}}{\Delta \text{AA}} \approx g'_r - \frac{\partial}{\partial \text{AA}} (\nabla \cdot \text{OHT}) + \text{feedback effects} \quad (\text{A4})$$

where g_r represents the regional impact of AA on OHU.

Acknowledgments

DJ was supported by UK Research and Innovation grant (MR/T020822/1). DJ, SJ, and BS were funded by the UK Natural Environment Research Council ACSIS program (NE/N018028/1 and NE/N018044/1). EB, AD and the SMURPHS ensemble were funded by the Natural Environment Research Council (grants NE/N006186/1 and NE/N006054/1), and the ensemble was also supported by the National Centre for Atmospheric Science.

The data required to reproduce the figures and tables in this manuscript is held at https://figshare.com/articles/dataset/data_in/19281761/2 (Boland et al., 2022).

The code to reproduce the figures and tables, as well as to produce the intermediate data from the model output, is held at <https://doi.org/10.5281/zenodo.6418480> (Boland, 2022).

References

- Andrews, M. B., Ridley, J. K., Wood, R. A., Andrews, T., Blockley, E. W., Booth, B., ... others (2020). Historical simulations with hadgem3-gc3. 1 for cmip6. *Journal of Advances in Modeling Earth Systems*, 12(6), e2019MS001995.
- Bellouin, N., Quaas, J., Gryspeerdt, E., Kinne, S., Stier, P., Watson-Parris, D., ... others (2020). Bounding global aerosol radiative forcing of climate change. *Reviews of Geophysics*, 58(1), e2019RG000660.
- Boland, E. (2022, April). *emmomp/smurphs_ohc: First release*. Zenodo. Retrieved from <https://doi.org/10.5281/zenodo.6418480> doi: 10.5281/zenodo.6418480
- Boland, E., Jones, D., Dittus, A., Josey, S., & Sinha, B. (2022, Apr). *Smurphs ohc data*. figshare. Retrieved from https://figshare.com/articles/dataset/data_in/19281761/2 doi: 10.6084/m9.figshare.19281761
- Booth, B. B., Dunstone, N. J., Halloran, P. R., Andrews, T., & Bellouin, N. (2012). Aerosols implicated as a prime driver of twentieth-century north atlantic climate variability. *Nature*, 484(7393), 228–232.
- Booth, B. B., Harris, G. R., Jones, A., Wilcox, L., Hawcroft, M., & Carslaw, K. S. (2018). Comments on “rethinking the lower bound on aerosol radiative forcing”. *Journal of Climate*, 31(22), 9407–9412.
- Boucher, O., Randall, D., Artaxo, P., Bretherton, C., Feingold, G., Forster, P., ... others (2013). Climate change 2013: the physical science basis. Contribution of Working Group I to the Fifth Assessment Report of the Intergovernmental Panel on Climate Change. *K., Tignor, M., Allen, SK, Boschung, J., Nauels, A., Xia, Y., Bex, V., and Midgley, PM, Cambridge University Press, Cambridge, UK*.

- Boyer, T. P., Garcia, H. E., Locarnini, R. A., Zweng, M. M., Mishonov, A. V., Reagan, J. R., ... Smolyar, I. V. (2018). *World Ocean Atlas 2018*. NOAA National Centers for Environmental Information. Retrieved from <https://accession.nodc.noaa.gov/NCEI-WOA18> (Ocean Heat Content Datasets, accessed July 2021)
- Cai, W., Bi, D., Church, J., Cowan, T., Dix, M., & Rotstayn, L. (2006). Pan-oceanic response to increasing anthropogenic aerosols: Impacts on the southern hemisphere oceanic circulation. *Geophysical research letters*, 33(21).
- Carton, J. A., & Santorelli, A. (2008). Global decadal upper-ocean heat content as viewed in nine analyses. *Journal of Climate*, 21(22), 6015–6035.
- Chen, X., & Tung, K.-K. (2014, aug). Varying planetary heat sink led to global-warming slowdown and acceleration. *Science*, 345(6199), 897–903. doi: 10.1126/science.1254937
- Cheng, L., Trenberth, K. E., Fasullo, J., Boyer, T., Abraham, J., & Zhu, J. (2017). Improved estimates of ocean heat content from 1960 to 2015. *Science Advances*, 3(3), e1601545.
- Church, J. A., White, N. J., & Arblaster, J. M. (2005, nov). Significant decadal-scale impact of volcanic eruptions on sea level and ocean heat content. *Nature*, 438(7064), 74–77. doi: 10.1038/nature04237
- Collier, M. A., Rotstayn, L. D., Kim, K.-Y., Hirst, A. C., & Jeffrey, S. J. (2013). Ocean circulation response to anthropogenic-aerosol and greenhouse gas forcing in the csiro-mk3.6 coupled climate model. *Aust. Meteorol. Oceanogr. J.*, 63, 27–39.
- Delworth, T. L., Ramaswamy, V., & Stenchikov, G. L. (2005, dec). The impact of aerosols on simulated ocean temperature and heat content in the 20th century. *Geophysical Research Letters*, 32(24), L24709. doi: 10.1029/2005GL024457
- Desbruyères, D. G., Purkey, S. G., McDonagh, E. L., Johnson, G. C., & King, B. A. (2016). Deep and abyssal ocean warming from 35 years of repeat hydrography. *Geophysical Research Letters*, 43(19), 10–356.
- Deser, C., Alexander, M. A., Xie, S.-P., & Phillips, A. S. (2010). Sea surface temperature variability: Patterns and mechanisms. *Annual review of marine science*, 2, 115–143.
- Dittus, A. J., Hawkins, E., Robson, J. I., Smith, D. M., & Wilcox, L. J. (2022). Drivers of recent North Pacific decadal variability: the role of aerosol forcing. *Earth's Future, Under Review*.
- Dittus, A. J., Hawkins, E., Wilcox, L. J., Sutton, R. T., Smith, C. J., Andrews, M. B., & Forster, P. M. (2020, jul). Sensitivity of Historical Climate Simulations to Uncertain Aerosol Forcing. *Geophysical Research Letters*, 47(13). doi: 10.1029/2019GL085806
- Ekman, A. M. (2014, Jan). Do sophisticated parameterizations of aerosol-cloud interactions in CMIP5 models improve the representation of recent observed temperature trends? *Journal of Geophysical Research: Atmospheres*, 119(2), 817–832. doi: 10.1002/2013JD020511
- England, M. H., McGregor, S., Spence, P., Meehl, G. A., Timmermann, A., Cai, W., ... Santoso, A. (2014, mar). Recent intensification of wind-driven circulation in the Pacific and the ongoing warming hiatus. *Nature Climate Change*, 4(3), 222–227. doi: 10.1038/nclimate2106
- Fiedler, S., & Putrasahan, D. (2021, apr). How Does the North Atlantic SST Pattern Respond to Anthropogenic Aerosols in the 1970s and 2000s? *Geophysical Research Letters*, 48(7), e2020GL092142. doi: 10.1029/2020GL092142
- Forster, P., Storelvmo, T., Armour, K., Collins, W., Dufresne, J.-L., Frame, D., ... Zhang, H. (2021). Climate Change 2021: The Physical Science Basis. Contribution of Working Group I to the Sixth Assessment Report of the Intergovernmental Panel on Climate Change. In (chap. The Earth's Energy Budget, Climate Feedbacks, and Climate Sensitivity). Cambridge University Press. (In

- Press)
- Fyfe, J. C., Meehl, G. A., England, M. H., Mann, M. E., Santer, B. D., Flato, G. M., ... Swart, N. C. (2016). Making sense of the early-2000s warming slowdown. *Nature Climate Change*, 6(3), 224–228. doi: 10.1038/nclimate2938
- Gleckler, P. J., AchutaRao, K., Gregory, J. M., Santer, B. D., Taylor, K. E., & Wigley, T. M. L. (2006, sep). Krakatoa lives: The effect of volcanic eruptions on ocean heat content and thermal expansion. *Geophysical Research Letters*, 33(17), L17702. doi: 10.1029/2006GL026771
- Hobbs, W., Palmer, M. D., & Monselesan, D. (2016, mar). An Energy Conservation Analysis of Ocean Drift in the CMIP5 Global Coupled Models. *Journal of Climate*, 29(5), 1639–1653. doi: 10.1175/JCLI-D-15-0477.1
- Hoesly, R. M., Smith, S. J., Feng, L., Klimont, Z., Janssens-Maenhout, G., Pitkanen, T., ... others (2018). Historical (1750–2014) anthropogenic emissions of reactive gases and aerosols from the Community Emissions Data System (CEDS). *Geoscientific Model Development*, 11(1), 369–408.
- Jones, G. S., Stott, P. A., & Christidis, N. (2013, May). Attribution of observed historical near-surface temperature variations to anthropogenic and natural causes using CMIP5 simulations. *Journal of Geophysical Research: Atmospheres*, 118(10), 4001–4024. doi: 10.1002/JGRD.50239
- Kosaka, Y., & Xie, S.-P. (2013, sep). Recent global-warming hiatus tied to equatorial Pacific surface cooling. *Nature*, 501(7467), 403–407. doi: 10.1038/nature12534
- Liu, W., Fedorov, A. V., Xie, S.-P., & Hu, S. (2020). Climate impacts of a weakened Atlantic Meridional Overturning Circulation in a warming climate. *Science Advances*, 6(26), eaaz4876. doi: 10.1126/sciadv.aaz4876
- Liu, W., Lu, J., Xie, S.-P., & Fedorov, A. (2018, jun). Southern Ocean Heat Uptake, Redistribution, and Storage in a Warming Climate: The Role of Meridional Overturning Circulation. *Journal of Climate*, 31(12), 4727–4743. doi: 10.1175/JCLI-D-17-0761.1
- Mann, M. E., Steinman, B. A., Brouillette, D. J., & Miller, S. K. (2021). Multidecadal climate oscillations during the past millennium driven by volcanic forcing. *Science*, 371(6533), 1014–1019. doi: 10.1126/science.abc5810
- Marshall, J., Scott, J. R., Armour, K. C., Campin, J.-M., Kelley, M., & Romanou, A. (2015, apr). The ocean’s role in the transient response of climate to abrupt greenhouse gas forcing. *Climate Dynamics*, 44(7-8), 2287–2299. doi: 10.1007/s00382-014-2308-0
- Meehl, G. A., Arblaster, J. M., Fasullo, J. T., Hu, A., & Trenberth, K. E. (2011, oct). Model-based evidence of deep-ocean heat uptake during surface-temperature hiatus periods. *Nature Climate Change*, 1(7), 360–364. doi: 10.1038/nclimate1229
- Meyrignac, B., Boyer, T., Zhao, Z., Hakuba, M. Z., Landerer, F. W., Stammer, D., ... Zilberman, N. (2019, aug). Measuring Global Ocean Heat Content to Estimate the Earth Energy Imbalance. *Frontiers in Marine Science*, 6(JUL), 432. doi: 10.3389/fmars.2019.00432
- Oka, A., & Watanabe, M. (2017, apr). The post-2002 global surface warming slowdown caused by the subtropical Southern Ocean heating acceleration. *Geophysical Research Letters*, 44(7), 3319–3327. doi: 10.1002/2016GL072184
- Parker, D., Folland, C., Scaife, A., Knight, J., Colman, A., Baines, P., & Dong, B. (2007). Decadal to multidecadal variability and the climate change background. *Journal of Geophysical Research: Atmospheres*, 112(D18).
- Purkey, S. G., & Johnson, G. C. (2010). Warming of global abyssal and deep southern ocean waters between the 1990s and 2000s: Contributions to global heat and sea level rise budgets. *Journal of Climate*, 23(23), 6336–6351.
- Qin, M., Dai, A., & Hua, W. (2020). Aerosol-forced multidecadal variations across all ocean basins in models and observations since 1920. *Science advances*,

- 6(29), eabb0425.
- Seabold, S., & Perktold, J. (2010). statsmodels: Econometric and statistical modeling with python. In *9th python in science conference*.
- Smith, C. J., Kramer, R. J., Myhre, G., Alterskjær, K., Collins, W., Sima, A., ... Forster, P. M. (2020). Effective radiative forcing and adjustments in CMIP6 models. *Atmospheric Chemistry and Physics*, 20(16), 9591–9618. doi: 10.5194/acp-20-9591-2020
- Stephens, H., Wilcox, L. J., & Highwood, E. J. (2016, sep). Is there a robust effect of anthropogenic aerosols on the southern annular mode? *Journal of Geophysical Research*, 121(17), 10029–10042. doi: 10.1002/2015JD024218
- Stern, D. I. (2006). Reversal of the trend in global anthropogenic sulfur emissions. *Global Environmental Change*, 16(2), 207–220.
- Stolpe, M. B., Cowtan, K., Medhaug, I., & Knutti, R. (2021, jan). Pacific variability reconciles observed and modelled global mean temperature increase since 1950. *Climate Dynamics*, 56(1-2), 613–634. doi: 10.1007/s00382-020-05493-y
- Virtanen, P., Gommers, R., Oliphant, T. E., Haberland, M., Reddy, T., Cournapeau, D., ... SciPy 1.0 Contributors (2020). SciPy 1.0: Fundamental Algorithms for Scientific Computing in Python. *Nature Methods*, 17, 261–272. doi: 10.1038/s41592-019-0686-2
- Wang, G., Cheng, L., Abraham, J., & Li, C. (2018). Consensuses and discrepancies of basin-scale ocean heat content changes in different ocean analyses. *Climate dynamics*, 50(7), 2471–2487.
- Wilcox, L. J., Highwood, E. J., & Dunstone, N. J. (2013, jun). The influence of anthropogenic aerosol on multi-decadal variations of historical global climate. *Environmental Research Letters*, 8(2), 024033. doi: 10.1088/1748-9326/8/2/024033
- Yin, J., Overpeck, J., Peyser, C., & Stouffer, R. (2018, jan). Big Jump of Record Warm Global Mean Surface Temperature in 2014–2016 Related to Unusually Large Oceanic Heat Releases. *Geophysical Research Letters*, 45(2), 1069–1078. doi: 10.1002/2017GL076500
- Zanna, L., Khatiwala, S., Gregory, J. M., Ison, J., & Heimbach, P. (2019, jan). Global reconstruction of historical ocean heat storage and transport. *Proceedings of the National Academy of Sciences*, 116(4), 1126–1131. doi: 10.1073/pnas.1808838115

Supporting Information for “Ocean Heat Content responses to changing Anthropogenic Aerosol Forcing Strength: regional and multi-decadal variability”

Emma J.D. Boland¹, Andrea J. Dittus², Daniel C. Jones¹, Simon A. Josey³,
and Bablu Sinha³

¹British Antarctic Survey, Cambridge, UK

²National Centre for Atmospheric Science, University of Reading, Reading, UK

³National Oceanography Centre, Southampton, UK

Contents of this file

1. Figures S1 to S8

Introduction The supplementary information contains figures that there was not space for in the main manuscript, or that provide more granularity than the figures in the main manuscript. All figures are referenced in the main manuscript.

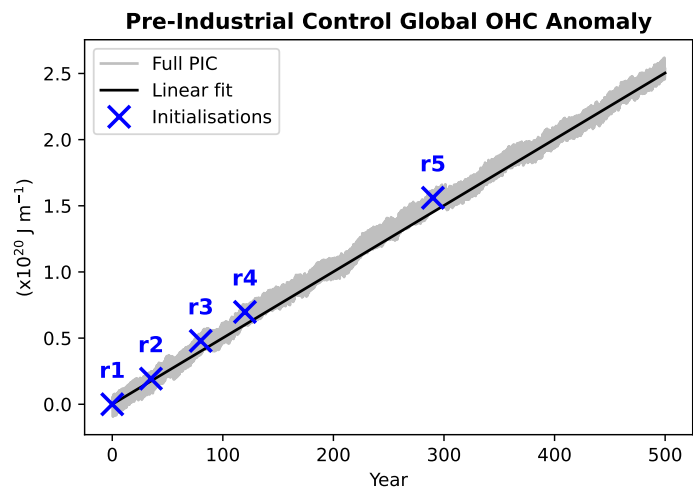


Figure S1. Example of Pre-Industrial Control drift in OHC: Global OHC anomalies from the Pre-Industrial Control Run, scaled by volume as outlined in main text (grey line), linear fit used to de-drift (black line), and locations of initialisations for each ensemble member of the historical simulations (blue crosses). De-drifting involved removing the 500-yr linear trend (black line) and accounting for the separation of the initialisations (different crosses).

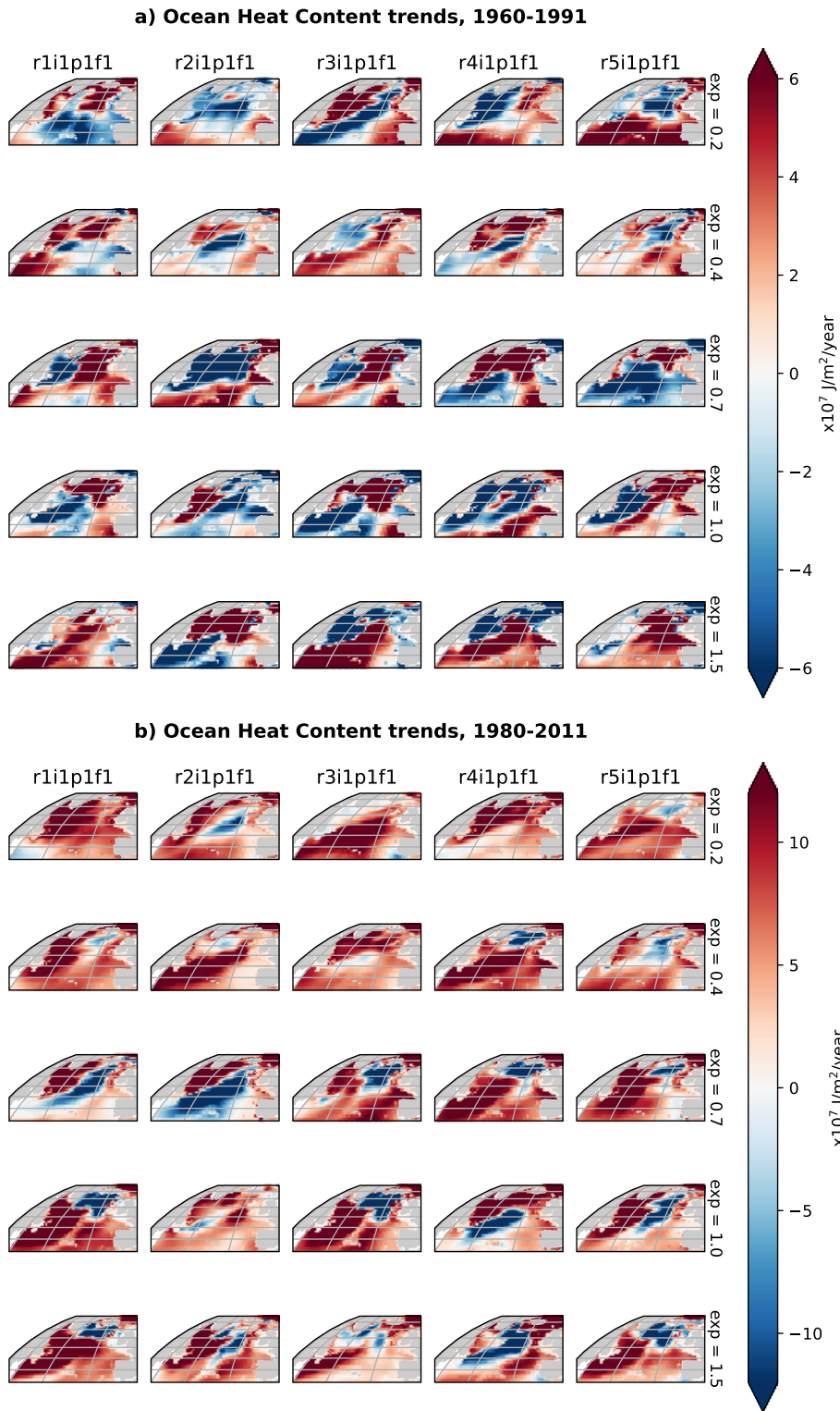


Figure S2. Colours indicate the North Atlantic depth-integrated OHC trends by ensemble member (column) and by AA forcing factor (row) as labelled, for (a) 1960-1991 and (b) 1980-2011.

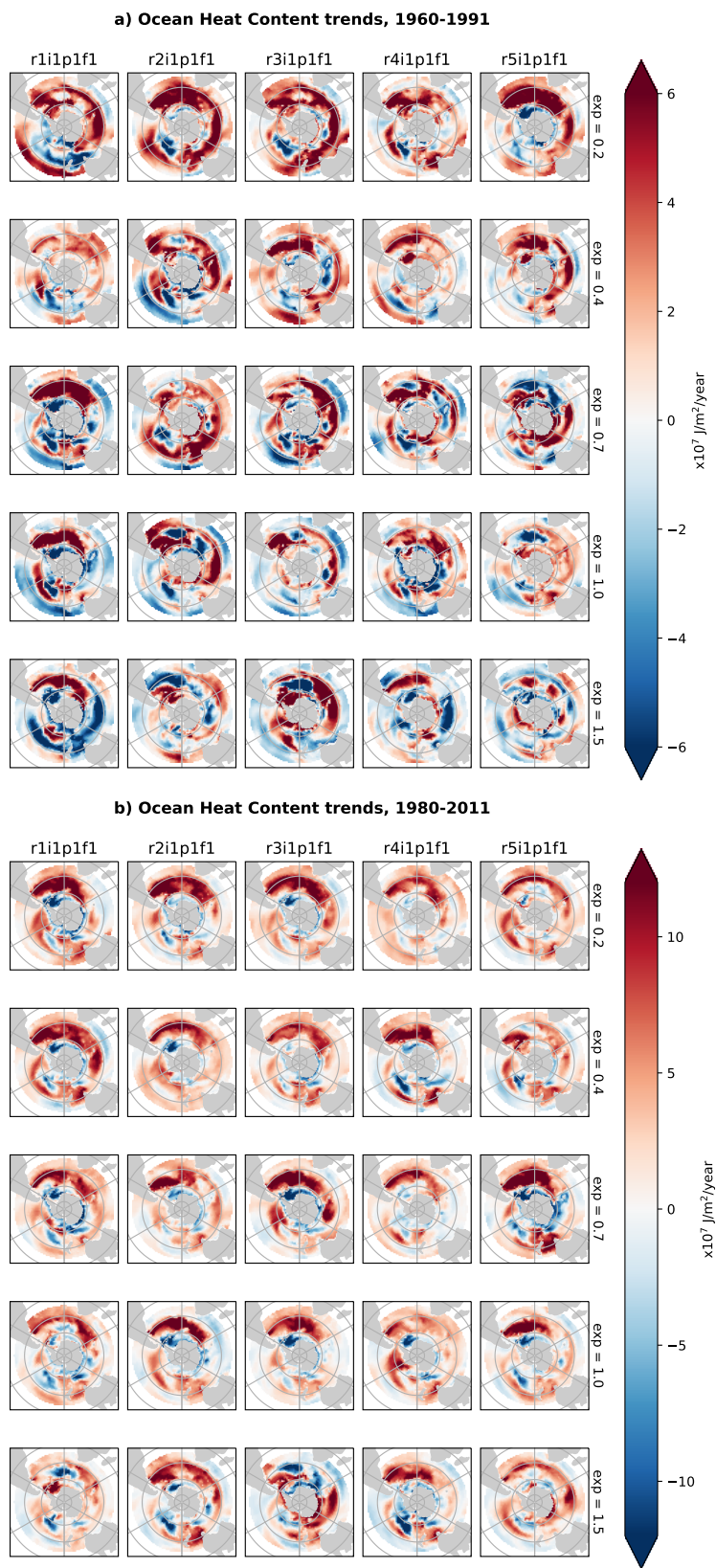


Figure S3. As in figure S1, but for the Southern Ocean

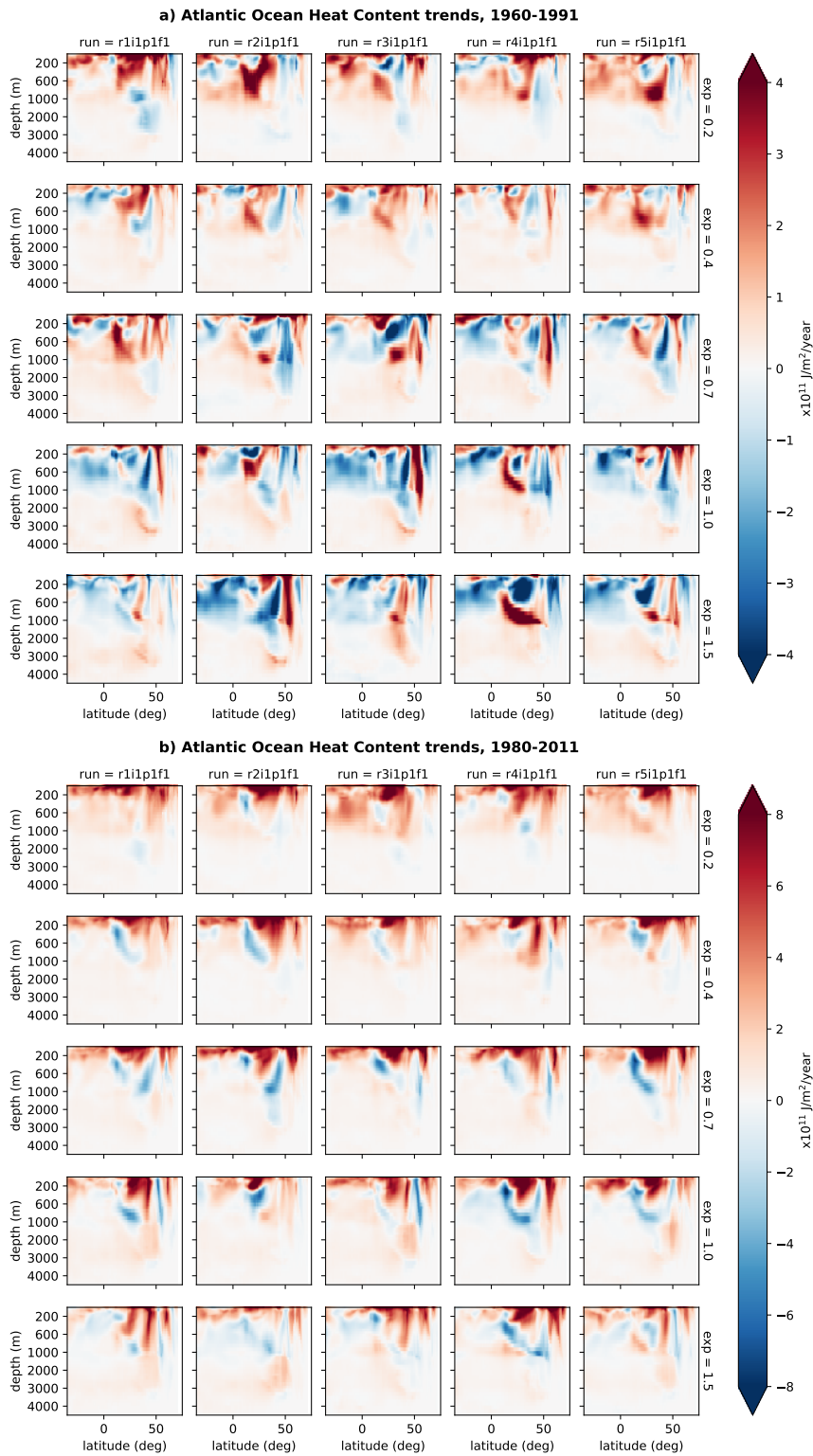


Figure S4. Colours indicate the zonally-integrated Atlantic OHC trends for each ensemble member (column) and each forcing factor (row) for (a) 1960-1991 and (b) 1980-2011. Note that depth intervals are not constant, and colour axis limits in b) are twice those in a).

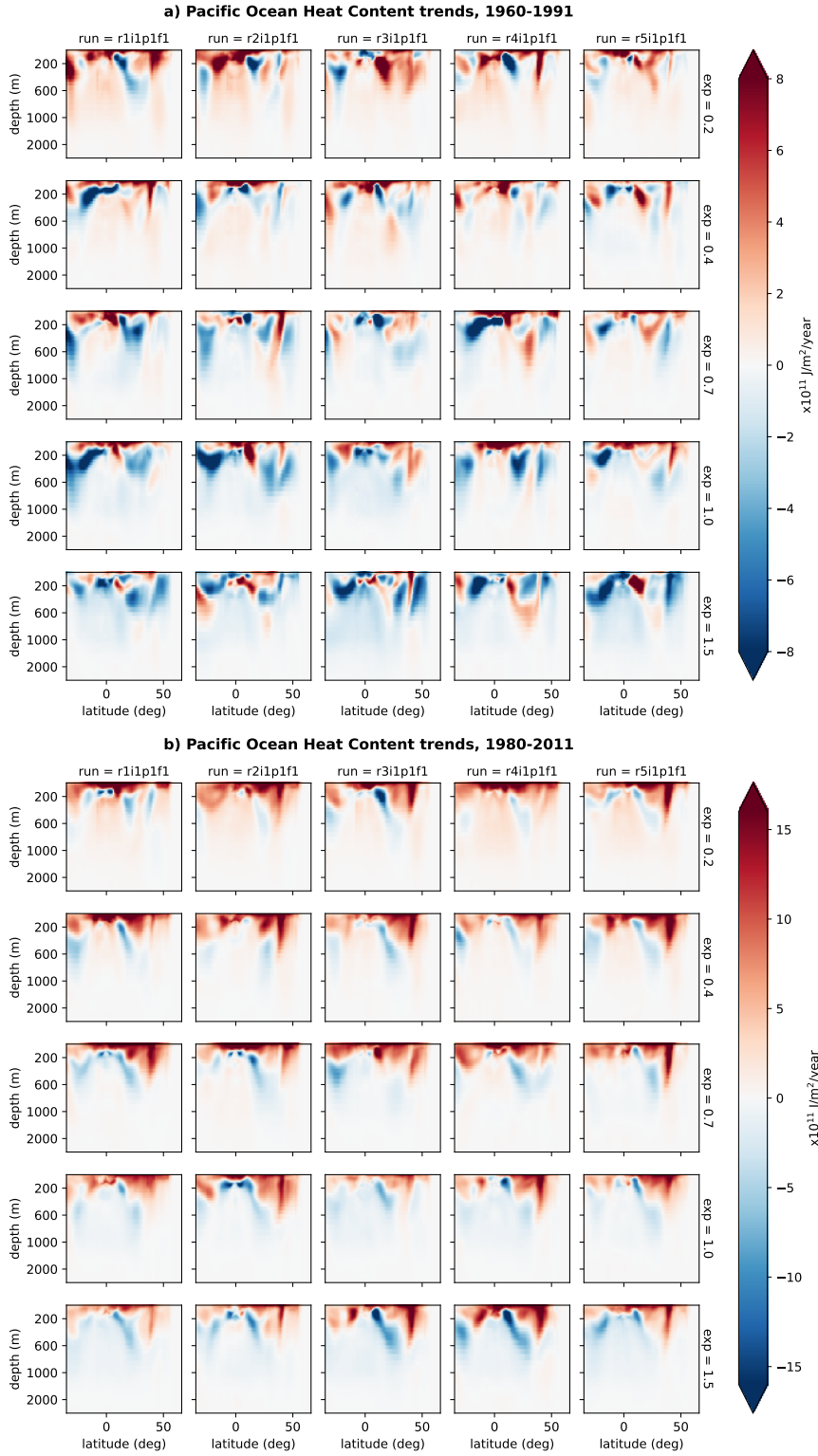


Figure S5. As in figure S3, except for the Pacific Ocean.

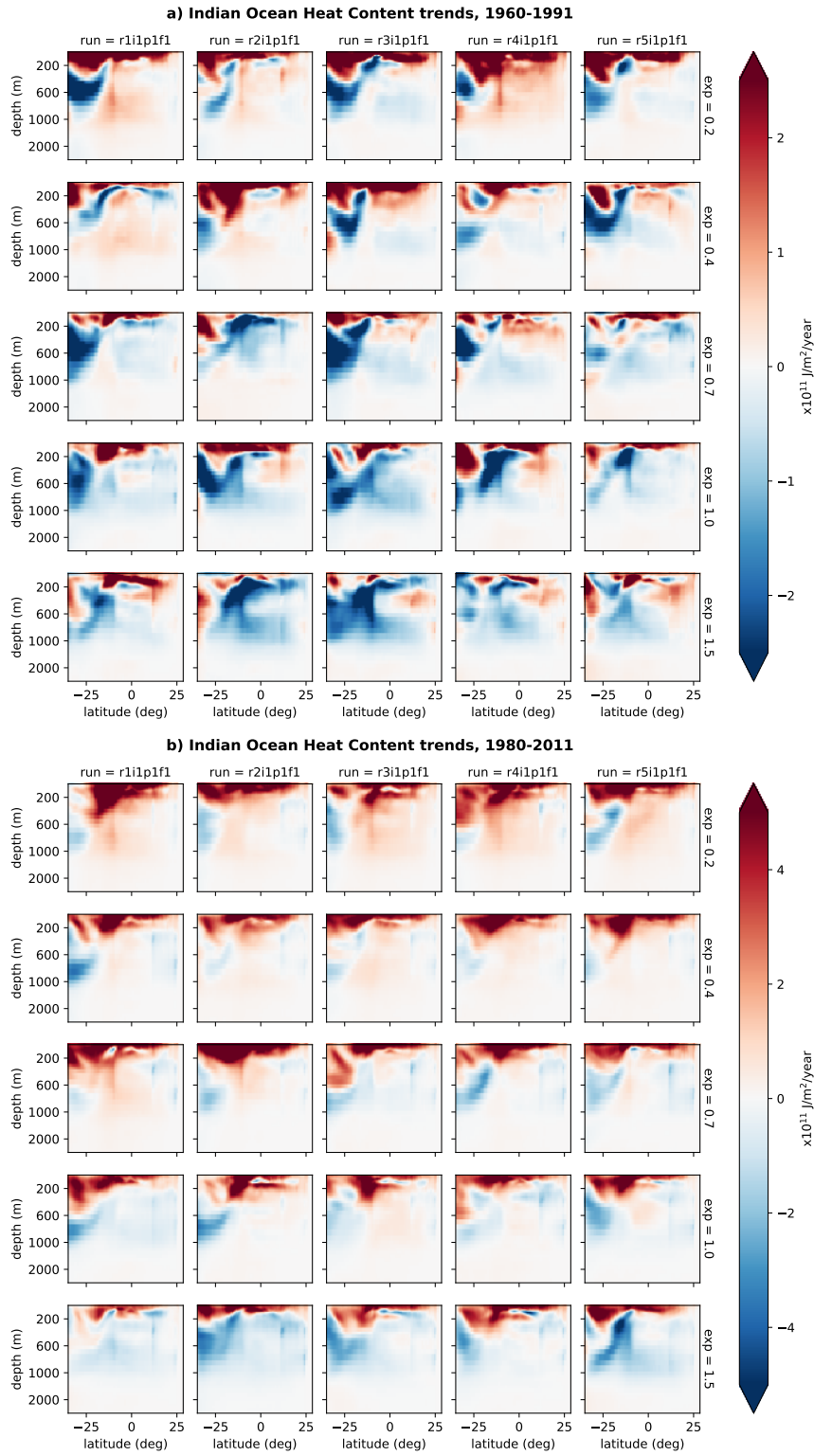


Figure S6. As in figure S3, except for the Indian Ocean.

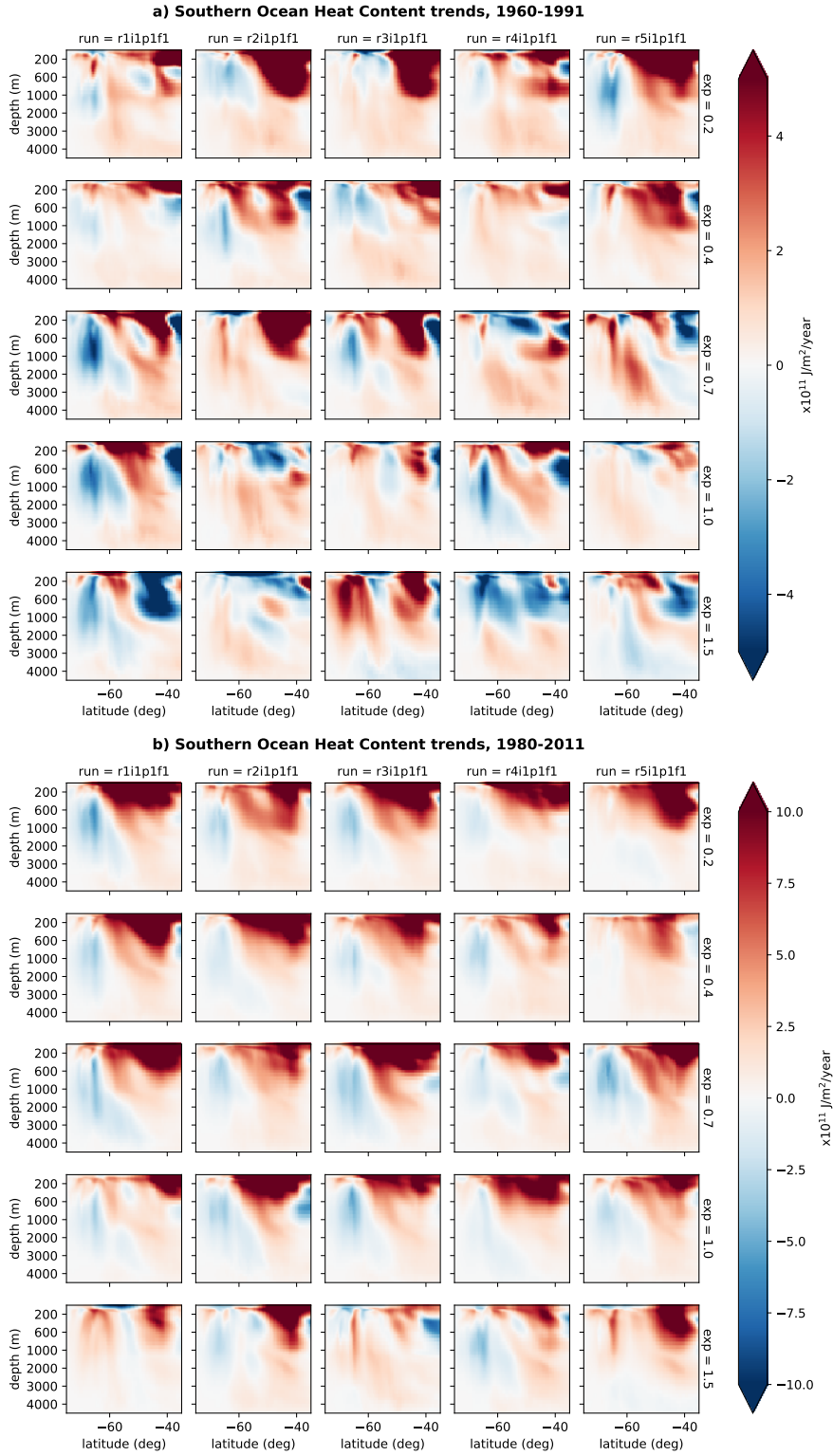


Figure S7. As in figure S3, except for the Southern Ocean.

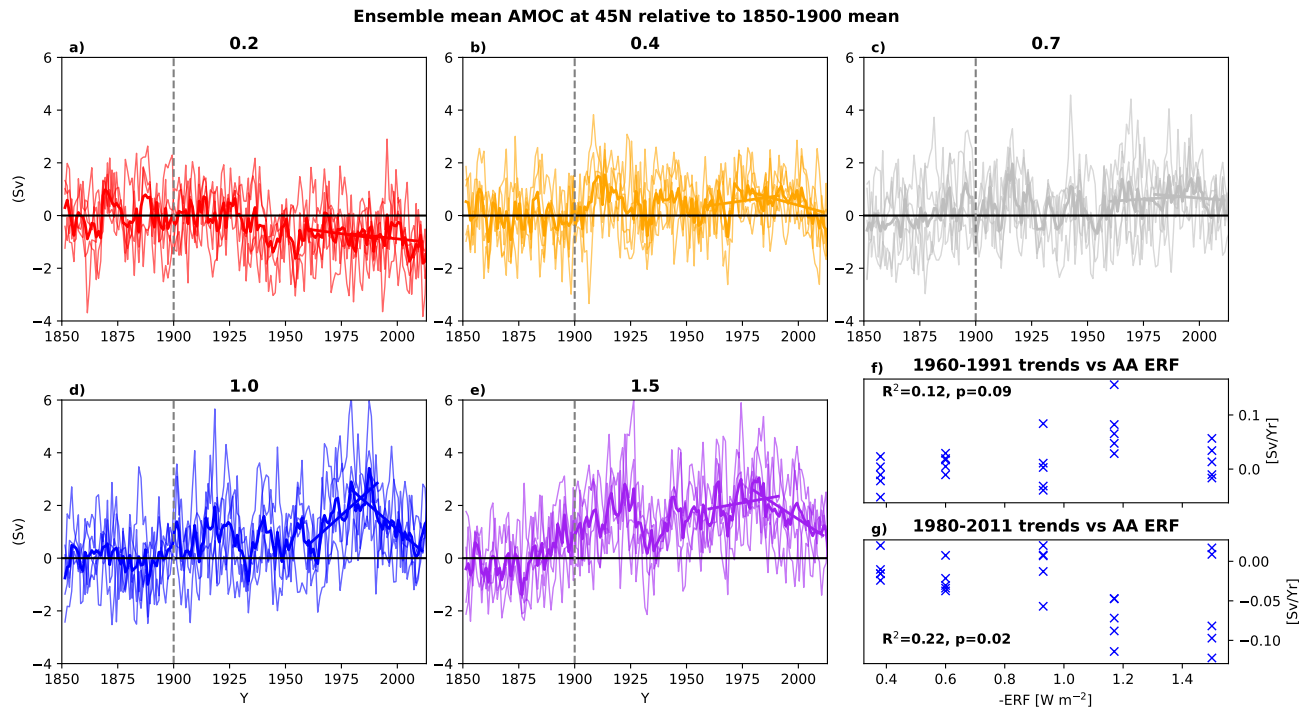


Figure S8. Panels a-e show the AMOC at 45N relative to the 1850-1900 mean, for each forcing factor as labeled. Thin lines are individual ensemble members and thicker lines are ensemble means. Straight thick lines indicate ensemble-mean linear trends over 1960-1991 and 1980-2011. Linear trends for all ensemble members are shown in panels f and g, plotted against AA ERF. R^2 and p are shown for the linear correlation of the trends against ERF magnitude.

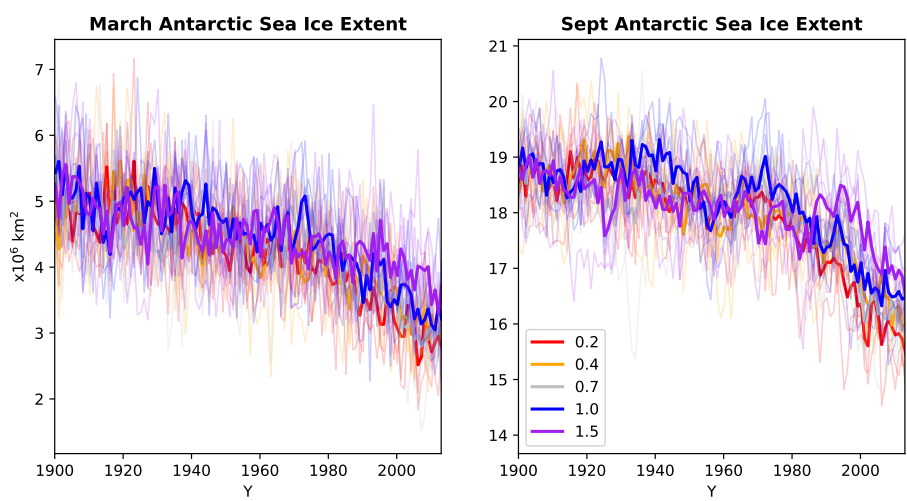


Figure S9. March and September Southern Hemisphere sea ice extent for each forcing factor as labelled. Thin lines are individual ensemble members and thicker lines are ensemble means.