

# Impacts of Fine Particulate Matter from Wildfire Smoke on Respiratory and Cardiovascular Health in California

Alexandra Heaney<sup>1</sup>, Jennifer D Stowell<sup>2</sup>, Jia Coco Liu<sup>3</sup>, Rupa Basu<sup>4</sup>, Miriam E. Marlier<sup>5</sup>, and Patrick Kinney<sup>2</sup>

<sup>1</sup>University of California, Berkeley

<sup>2</sup>Boston University

<sup>3</sup>Johns Hopkins University

<sup>4</sup>California Office of Environmental Health Sciences

<sup>5</sup>University of California Los Angeles

November 23, 2022

## Abstract

Increasing wildfire activity across the Western US poses a significant public health threat. While there is evidence that wildfire smoke is detrimental for respiratory health, the impacts on cardiovascular health remain unclear. This study evaluates the association between fine particulate matter (PM<sub>2.5</sub>) from wildfire smoke and cardiorespiratory hospital visits in California during the 2004-2009 wildfire seasons. We estimate daily mean wildfire-specific PM<sub>2.5</sub> with GEOS-Chem, a global three-dimensional model of atmospheric chemistry, with wildfire emissions from the Global Fire Emissions Database (GFED3). We defined a “smoke event day” as cumulative 0-1-day lag wildfire-specific PM<sub>2.5</sub> ≥ 98th percentile of cumulative 0-1 lag day wildfire PM<sub>2.5</sub>. Associations between exposure and outcomes are estimated using negative binomial regression. Results indicate that smoke event days are associated with a 3.3% (95% CI: [0.4%,6.3%]) increase in visits for all respiratory diseases and a 10.3% (95% CI: [2.3%,19.0%]) increase for asthma specifically. Stratifying by age, we found the largest effect for asthma among children ages 0-5y. We observed no significant association between exposure and overall cardiovascular disease, but stratified analyses revealed increases in visits for all cardiovascular, ischemic heart disease, and heart failure among non-Hispanic white individuals and those older than 65y. Further, we found significant interaction between smoke event days and daily temperature for all cardiovascular disease visits, suggesting that days with high wildfire PM<sub>2.5</sub> and high temperatures may pose greater disease risk. These results suggest increases in adverse outcomes from wildfire smoke exposure and indicate the need for improved prevention and adaptations to protect vulnerable populations.

## Hosted file

supplementa\_final.docx available at <https://authorea.com/users/542630/articles/601011-impacts-of-fine-particulate-matter-from-wildfire-smoke-on-respiratory-and-cardiovascular-health-in-california>

# Impacts of Fine Particulate Matter from Wildfire Smoke on Respiratory and Cardiovascular Health in California

Alexandra Heaney<sup>1\*</sup>, Jennifer D. Stowell<sup>2\*</sup>, Jia Coco Liu<sup>3</sup>, Rupa Basu<sup>4</sup>, Miriam Marlier<sup>5</sup>, Patrick Kinney<sup>2</sup>

1 Division of Environmental Health Sciences, School of Public Health, University of California, Berkeley, Berkeley, CA

2 Department of Environmental Health, School of Public Health, Boston University, Boston, MA

3 Facebook, Menlo Park, CA

4 California Office of Environmental Health Hazard Assessment, Air and Climate Epidemiology Section, Oakland, CA

5 Department of Environmental Health Sciences, University of California, Los Angeles, Los Angeles, CA

\*Authors contributed equally

## Key Points

- Consecutive days of wildfire smoke PM<sub>2.5</sub> exposure can significantly impact respiratory and cardiovascular health outcomes
- Ischemic heart disease and heart failure associated with wildfire smoke exposure is highest in adults 65+ years
- Increased heart failure with wildfire smoke exposure is elevated in both non-Hispanic white and non-Hispanic Black populations.
- When combined with increase in temperature, wildfire smoke exposure is associated with increased risk of cardiovascular disease

## Abstract

Increases in wildfire activity across the Western US pose a significant public health threat. While there is evidence that wildfire smoke is detrimental for respiratory health, the impacts on cardiovascular health remain unclear. This study evaluates the association between fine particulate matter (PM<sub>2.5</sub>) from wildfire smoke and unscheduled cardiorespiratory hospital visits

in California during the 2004-2009 wildfire seasons. We estimate daily mean wildfire-specific PM<sub>2.5</sub> with GEOS-Chem, a global three-dimensional model of atmospheric chemistry, with wildfire emissions estimates from the Global Fire Emissions Database (GFED3). We defined a “smoke event day” as cumulative 0-1-day lag wildfire-specific PM<sub>2.5</sub>  $\geq$  98<sup>th</sup> percentile of cumulative 0-1 lag day wildfire PM<sub>2.5</sub>. Associations between exposure and outcomes are estimated using negative binomial regression. Results indicate that smoke event days are associated with a 3.3% (95% CI: [0.4%, 6.3%]) increase in visits for all respiratory diseases and a 10.3% (95% CI: [2.3%, 19.0%]) increase for asthma specifically. Stratifying by age, we found the largest effect for asthma among children ages 0-5 years. We observed no significant association between exposure and overall cardiovascular disease, but stratified analyses revealed increases in visits for all cardiovascular, ischemic heart disease, and heart failure among non-Hispanic white individuals and those older than 65 years. Further, we found a significant interaction between smoke event days and daily average temperature for all cardiovascular disease visits, suggesting that days with high wildfire PM<sub>2.5</sub> concentrations and high temperatures may pose greater risk for cardiovascular disease. These results suggest substantial increases in adverse outcomes from wildfire smoke exposure and indicate the need for improved prevention strategies and adaptations to protect vulnerable populations.

**Abstract Word Count: 267 (250 limit)**

**Key Words:** impacts of climate change: human health (0230), public health (0240), pollution: urban and regional (0345)

## Introduction

The frequency, size, and intensity of wildfires in the Western United States have increased over the past 40 years, (Ager et al., 2017; Balch et al., 2017; Coogan et al., 2019; Littell et al., 2009; Mueller et al., 2020; Westerling et al., 2006) presenting substantial threat to human health. In particular, the past several fire seasons in the Western United States rank among the most devastating in history and six of the twenty largest wildfires ever in California occurred in 2020 alone (Cal Fire, 2020). While extensive research has established the negative effects of particles measuring less than 2.5 micrometers in aerodynamic diameter (PM<sub>2.5</sub>) on respiratory and cardiovascular health (Dominici et al., 2006; Medina-Ramon et al., 2006), the previous literature focuses mostly on air pollution generated from the burning of fossil fuels (Naeher et al., 2007). However, the composition of PM emitted from wildfire differs from PM generated from fossil fuel combustion (Naeher et al., 2007) and some have suggested that the unique mixture of particulates in smoke may have unique toxicity (Aguilera et al., 2021; Stowell et al., 2019). Given the distinctions between fire-derived PM and other sources of PM, and that wildfires are likely to present an increasingly greater threat throughout the next century in many fire-prone regions around the world due to climate change (Fried et al., 2008; Fried et al., 2004; Westerling, 2018), further research investigating the health impacts of fire emissions is essential to guide future public health efforts.

While growing evidence from epidemiological studies suggests that wildfire smoke is associated with adverse respiratory health outcomes, the impact of fire emissions on cardiovascular health remains unclear. As with ambient air pollution more broadly, wildfire PM emissions have been linked to declines in lung function of non-asthmatic children (Jacobson et al., 2012), increases in self-reported respiratory symptoms (Frankenberg et al., 2005; Kolbe &

Gilchrist, 2009; Mirabelli et al., 2009; Mott et al., 2002; Sutherland et al., 2005), respiratory-related physician visits (Henderson et al., 2011; Mott et al., 2002), respiratory-related emergency department visits (Rappold et al., 2011), and respiratory-related hospitalizations (Alman et al., 2016; Chen et al., 2006; Delfino et al., 2009; Fann et al., 2018; Henderson et al., 2011; Ignotti, Valente, et al., 2010; Malig et al., 2021; Martin et al., 2013; Morgan et al., 2010; Mott et al., 2005; Stowell et al., 2019). Although extensive work has shown biomass smoke from household cooking or heating adversely affects cardiovascular health (Gouveia & Fletcher, 2000; McCracken et al., 2012), associations between cardiovascular outcomes and exposure to wildfire smoke have been inconsistent across studies (Stowell et al., 2019).

Relatively little is known about the vulnerability of specific sub-populations to wildfire emissions. Some work suggests that older individuals may be particularly susceptible to wildfire PM exposure (Analitis et al., 2012; Gouveia & Fletcher, 2000; Henderson et al., 2011; Ignotti, Hacon, et al., 2010; Le et al., 2014; Liu, Wilson, Mickley, Ebisu, et al., 2017; Morgan et al., 2010; Mott et al., 2005; Reid, 2014). Older individuals may have higher susceptibility to wildfire PM exposure due to declining physiological processes over time, and higher baseline prevalence of cardiovascular and respiratory health problems (Sacks et al., 2011). Studies have shown reduced clearance of ambient PM in the respiratory tract with age (EPA., 2009), as well as decreased heart rate variability in older individuals following PM exposure (Devlin et al., 2003). Additionally, young children may be more vulnerable to wildfire smoke exposure due to higher rates of respiration and subsequent increase in exposure (Delfino et al., 2009; Kerem, 1996; Kunzli et al., 2006; Morgan et al., 2010; Stowell et al., 2019; Wu et al., 2006). While the ambient PM literature suggests that females may be at higher risk for respiratory health problems due to PM exposure (Bell et al., 2013), potentially due to sex differences in lung airway size, lung

function, and absorption of gases through the respiratory system (Sacks et al., 2011), evidence for wildfire exposure is limited and has mixed results (Reid, 2014; Reid et al., 2016). More work is needed to identify and clarify which sub-populations may be particularly vulnerable to wildfire smoke exposure to target prevention efforts.

While the literature on the health effects of wildfire PM has grown in recent years, studies remain somewhat limited by data availability. One challenge in conducting epidemiological analyses of wildfire smoke related health effects is estimating exposure levels, because of the difficulty in differentiating PM originating from wildfire smoke from PM generated from other sources. Additionally, studies investigating sub-population vulnerabilities have been limited due to a paucity of spatially and temporally resolved respiratory and cardiovascular health data linked to relevant demographic information, such as sex, age, race, and wealth. As a result, few studies have focused on wildfire respiratory impacts in California, where high wildfire smoke exposure is increasingly a pressing concern for both urban and rural counties (Goss et al., 2020; Leibel et al., 2020; Mott et al., 2002; Reid, 2014; Reid et al., 2019; Shusterman et al., 1993).

Here, we leveraged unique exposure and hospitalization data to understand the impacts of wildfire specific PM<sub>2.5</sub> on respiratory and cardiovascular health in California, and to investigate potential sub-population vulnerability to wildfire emissions. We utilized daily modeled PM<sub>2.5</sub> concentrations derived specifically from wildfires from 2004-2009 across all California counties to analyze how these exposures influenced county-level rates of cause-specific respiratory and cardiovascular hospital visits. To investigate sub-population vulnerability, we stratified by age and race/ethnicity to elucidate potential wildfire specific PM<sub>2.5</sub> health effects among various subpopulations.

## **Methods**

### ***Wildfire Smoke Pollution Estimates***

Daily wildfire smoke specific PM<sub>2.5</sub> exposure data was generated at 0.5 x 0.67° resolution using the GEOS-Chem (v9-01-03) chemical transport model framework. GEOS-Chem utilizes meteorological data from the Goddard Earth Observing System (GEOS-5) and daily wildfire emissions from the Global Fire Emissions Database (GFED3) to estimate primary particle formation from wildfires. Two simulations were generated—one representing total emissions (all-source PM<sub>2.5</sub> including wildfires as well as non-fire sources such as transportation, industry, and power plants) and one excluding wildfire emissions (no-fire PM<sub>2.5</sub>). The difference between the two simulations represents the contribution of wildfire-derived PM<sub>2.5</sub>. Further information regarding the modeling structure can be found in Liu et al. 2017. County-level PM<sub>2.5</sub> model estimates were calibrated based on ground-level PM<sub>2.5</sub> monitoring data so that the distribution of modeled PM<sub>2.5</sub> resembles the distribution of monitored data (Liu, Wilson, Mickley, Dominici, et al., 2017).

### ***Respiratory and Cardiovascular Disease Data***

We obtained county-level daily records of unscheduled hospital visits across California spanning 6 years (2004 – 2009) from the Office of Statewide Health and Development. The data includes hospital visits for all respiratory diseases (ICD9-CM 460-519), and respiratory disease subgroups such as asthma (ICD9-CM 493), acute respiratory infections (ICD9-CM 460-466), chronic obstructive pulmonary disease (COPD, ICD9-CM 490-492, 494-496), all cardiovascular diseases (ICD9-CM 390-459), and cardiovascular disease subgroups, including heart failure (ICD9-CM 428), and ischemic heart disease (IHD, ICD9-CM 410-414). We extracted county-

level daily hospital visits during the fire season (May. 1 – Oct. 31) to match the temporal resolution of the wildfire emissions data. County-level hospital visit counts were also stratified by age group (0-5, 6-18, 19-64, and 65+ years) and race (Non-Hispanic white, Non-Hispanic Black, Non-Hispanic Asian, and Hispanic).

### ***Temperature and Population Data***

To address potential confounding or effect modification by temperature, we obtained temperature measurements from all meteorological stations across California from the National Centers for Environmental Information to include as a variable in our analyses. Measurements from stations within the same county were averaged to generate mean 24-hour (daily) county-level temperature from 2004-2009. County level population data was obtained from the 2010 Census Bureau survey.

### ***Smoke Event Definition***

For the main analysis we defined our exposure variable as “smoke event days”. To define smoke event days, we first summed the wildfire-derived  $PM_{2.5}$  on each day with the wildfire-derived  $PM_{2.5}$  on the preceding day to generate a variable representing cumulative 0-1 day lagged wildfire  $PM_{2.5}$ . We utilized this aggregate measure of current and preceding day fire  $PM_{2.5}$  in order to best capture short term exposure to wildfire emissions. Preliminary analyses indicated that the associations between hospital visits and wildfire  $PM_{2.5}$  were highest when wildfire  $PM_{2.5}$  was either unlagged or lagged 1 day. Next, we generated wildfire  $PM_{2.5}$  thresholds using percentiles of all cumulative 0-1 lag day wildfire  $PM_{2.5}$  measurements. Days were categorized as smoke event days when the cumulative 0-1 lag day wildfire  $PM_{2.5}$  for that day



exceeded the wildfire PM<sub>2.5</sub> threshold. Thresholds were set using the 94<sup>th</sup>, 96<sup>th</sup>, 98<sup>th</sup>, and 99<sup>th</sup> percentiles of cumulative 0-1 lag day wildfire PM<sub>2.5</sub>. Hence, we generated 6 different smoke event day exposure variables based on the different wildfire PM<sub>2.5</sub> thresholds.

### *Statistical Analyses*

We used negative binomial regression models to compare daily hospital visit rates on smoke event days and non-smoke event days. Separate regression models were used to predict the effects of smoke event days on hospital visits for each health outcome considered. All models included county fixed effects, an indicator variable for day of week, county-level measurements of daily average temperature, county-level estimates of non-wildfire PM<sub>2.5</sub>, and a county-level offset for population. Additionally, we controlled for seasonal and long-term trends using indicator variables for month and year. Individual regression models were run for each health outcome using smoke event days as defined by the different wildfire PM<sub>2.5</sub> thresholds (based on the 94<sup>th</sup>, 96<sup>th</sup>, 98<sup>th</sup>, and 99<sup>th</sup> percentiles of cumulative 0-1 lag day PM<sub>2.5</sub> measurements). Stratification analyses were performed for all age and race/ethnicity categories using the same model structures. Additionally, we tested an interaction term between smoke event days and average daily temperature for each health outcome to investigate whether temperature modified the effect of wildfire emissions on health.

We also investigated lagged associations between wildfire PM<sub>2.5</sub> and hospital visits using single lag negative binomial regressions. In contrast to the main regression models, exposure in these models was defined as a “single wildfire day”. A single wildfire day was defined as a day when the wildfire PM<sub>2.5</sub> was above the designated percentiles of single day wildfire PM<sub>2.5</sub> (i.e. wildfire emissions were not summed between current and preceding day in this analysis to test

effects of specific lag days). Regression models were run with single wildfire days lagged from 0-10 days to understand the lagged effects of wildfire emissions on hospital visits for each health outcome.

## Results

We observed wide spatial and interannual variability in wildfire specific PM<sub>2.5</sub> estimates across California counties from 2004-2009 (Figure 1). The highest daily average wildfire specific PM<sub>2.5</sub> estimates were seen in Trinity, Humboldt and Siskiyou counties. Within the fire season (May– October), we also observed seasonal patterns in wildfire specific PM<sub>2.5</sub> across all counties, with the highest average exposures occurring in July (Figure 2). Table 1 shows the average PM<sub>2.5</sub> levels on smoke event days and non-smoke event days. When using the 98<sup>th</sup> percentile of wildfire specific PM<sub>2.5</sub> (85.4 µg/m<sup>3</sup>) as the cutoff for smoke event days the average difference in PM<sub>2.5</sub> between smoke event and non-smoke event days was 42.62 µg/m<sup>3</sup>. Health outcomes also showed varying spatial patterns across the state (Figure S1) and some seasonal patterns (Figure S2). On average, the lowest disease rates during the fire season occurred in August for all health outcomes. Table 2 presents the breakdown of all hospital visits for each health outcome by age and race classification.

### *Associations between smoke event days and respiratory health outcomes*

The main analyses showed that smoke event days (defined based on cumulative wildfire PM<sub>2.5</sub> exposure from lag days 0-1) were positively associated with hospital visits for all respiratory diseases and asthma (Figure 3). Using the 98<sup>th</sup> percentile cutoff for smoke event days, we estimated a 3.3% (95% CI: [0.4% - 6.3%]) increase in hospital visits for all respiratory diseases on smoke event days compared to non-smoke event days. We observed a larger

association for asthma, with a 10.3% (95% CI: [2.3%, 19.0%]) increase in hospital visits on smoke event days compared to non-smoke event days. Results for COPD were marginally non-significant, with an estimated 6.4% (95% CI: [-0.1%, 13.3%]) increase in hospital visits on smoke event days compared to non-smoke event days. Results for acute respiratory infections were non-significant.

The lagged analyses, in which single wildfire days were defined based on current day wildfire-derived PM<sub>2.5</sub>, showed acute (0 lag day) positive effects of single wildfire days on hospital visits for all respiratory diseases, asthma, and COPD (Figure 4 and Table S1). In contrast, we estimated significant decreases in hospital visits for all respiratory diseases 5-7 days after a single wildfire day compared to a non-wildfire day (Figure 4). We observed a similar decline in hospital visits for acute respiratory infections at lags days 5-13 (Table S1).

Stratification analyses revealed differential effects on all respiratory hospitalizations by age group, with no effect seen in ages 0-5 years and positive effects seen among ages 6-18 years, 19-64 years, and older than 65 years. Positive effects of smoke event days on asthma hospitalizations were observed for all age groups (Figure 5). We found the largest positive effect of smoke event days on asthma hospitalizations among those aged 0-5 years (10.8%, 95% CI: [6.7%, 15.2%]), and also among those aged 6-18 years (8.1%, 95% CI: [0.8%, 24.5%]), 19-64 years (8.4%, 95% CI: [3.5%, 13.8%]) and older than 65 years (4.4%, 95% CI: [0.8%, 8.4%]). Additionally, acute respiratory infections showed differential associations when stratifying on age, with a positive association observed among those aged 0-5 years (Figures 5 and S7). For COPD hospital visits, we observed the largest positive association with smoke event days among those older than 65 (Figure 5).

When stratifying by race/ethnicity, increased hospitalizations for all respiratory hospital visits were exhibited in non-Hispanic white (47%, 95% CI: [24%, 74%]) and Hispanic individuals (43%, 95% CI: [25%, 64%]) on a smoke event day compared to a non-smoke event day. The largest association between smoke event days and hospital visits for acute respiratory infections was observed among Hispanic individuals (Figures 6 and S8). Positive associations between smoke even days and visits for COPD were only observed among non-Hispanic white individuals (Figure 6 and S10). No other consistent differences between age or race strata were observed (Figures S3-S10).

#### ***Associations between smoke event days and cardiovascular health outcomes***

Notably, we did not observe significant associations between smoke event days and any cardiovascular health outcomes (Figure 3) when analyzing for the entire population. However, we did observe a significant positive interaction between average temperature and smoke event days in our models predicting hospital visits for all cardiovascular diseases (Table S2). We estimated a 1.0 % (95% CI: [0.1%, 1.5%]) increase in cardiovascular disease hospital visits associated with every 5°C increase on smoke event days (defined using the 94<sup>th</sup> percentile of wildfire-derived PM<sub>2.5</sub>).

Age stratification analysis revealed significant increases in ischemic heart disease and heart failure hospital visits among adults older than 65 (Figure 7). Furthermore, when stratifying by race/ethnicity, we observed a positive association between smoke event days and all cardiovascular disease among non-Hispanic whites (1.7%, 95% CI: [0.4%, 2.9%]) based on the 98<sup>th</sup> percentile cutoff, as shown in Figure 7. Significant positive associations were also observed among non-Hispanic white individuals for ischemic heart disease hospital visits and in both non-Hispanic white and non-Hispanic Black subgroups for heart failure hospital visits (Figure 7). We

did not see any significant lagged effects for cardiovascular health outcomes or any other consistent difference between race/ethnicity and age group strata (Figures S11-S15 and Table S2).

## **Discussion**

Wildfire intensity, frequency and duration are increasing rapidly in California and across the western United States, and our results indicate that wildfire smoke pollution has significant detrimental health impacts across the state. We found that smoke event days (i.e., days when the cumulative 0-1 wildfire specific  $PM_{2.5}$  concentration was above the 98<sup>th</sup> percentile) were significantly associated with increased hospital visits for all respiratory diseases and asthma, as well as varied risk effect estimates when stratifying on age and race/ethnicity. We also found a significant interaction between smoke event days and ambient temperature for all cardiovascular disease hospital visits, suggesting that days with both high wildfire  $PM_{2.5}$  concentrations and hot temperatures may pose greater risk for cardiovascular disease.

Our study contributes to a growing literature showing negative impacts of wildfire smoke on respiratory health outcomes (Liu et al., 2015; Reid et al., 2016), and our results indicate that young children and older adults are particularly vulnerable to these health impacts. While our stratified analyses revealed positive associations between smoke event days and hospital visits for all respiratory disease among all age groups except children between 0-5, we estimated the strongest association among individuals older than 65 years. Smoke event days were similarly associated with increased hospital visits for asthma among all age groups, but the highest estimated effects were among children 0-5 and 6-18 years. This agrees with other findings, such as a study by Hutchinson et al. that estimated a significant increase in children's emergency department visits for asthma associated with exposure to wildfire smoke (risk ratio of 2.36 (95%

CI: 1.27-4.39) among children aged 0-4 years and 1.25 (95% CI: 1.05-1.48) among children aged 5-17 years) (Hutchinson et al., 2018). It is important to understand the vulnerability of specific subgroups, such as young children and older adults, in order to inform planning and response measures before, during, and following wildfire events. For example, it may be important to direct safety messaging surrounding staying indoors during high smoke conditions towards parents of young children and older adult subpopulations.

When stratifying on race, we estimated significant increases in all respiratory diseases, asthma, COPD, and acute respiratory infections on smoke wave days across all racial groups, but the largest effects were often among Hispanic individuals, who may be at increased risk from greater smoke exposures due to the combined effects of occupation and lower-income status. For example, a research group at Berkeley found that, in the state of California, there is a large outdoor agricultural workforce estimated to be approximately 80% low-income earners and 93% Latinx, putting this particular subgroup at risk for additional wildfire smoke exposure (Thomason & Bernhardt, 2020). These results could point to specific vulnerabilities in this race sub-population, but further information is needed. Future analyses should continue to investigate vulnerable subpopulations, especially other understudied and potentially susceptible subpopulations, such as low-income groups, pregnant women, and individuals with pre-existing medical conditions to target high-risk groups and help prevent wildfire smoke related adverse health outcomes.

In this study, we did not find significant associations between short-term or lagged wildfire PM<sub>2.5</sub> concentrations and hospital visits for any cardiovascular outcome in the full study population. Still, we observed that hospital visits for all cardiovascular outcomes, ischemic heart disease, and health failure were significantly increased among non-Hispanic white individuals on

smoke event days, which could be due to the large portion of the study sample identified as white (N = 980,360, 59%), resulting in greater statistical power to detect an effect in this subpopulation. We additionally found significant increases in hospital visits for all cardiovascular diseases, heart failure, and ischemic heart disease among individuals older than 65 on smoke event days. While there is robust literature showing that exposure to ambient PM<sub>2.5</sub> negatively impacts cardiovascular health (Cohen et al., 2017; Murray et al., 2020), evidence from epidemiological studies has been mixed when assessing associations between wildfire smoke and cardiovascular disease. Some previous studies have found positive associations between cardiovascular disease outcomes and wildfire smoke exposure (Jones et al., 2020; Malig et al., 2021), but other studies have found no association between wildfire smoke pollution and cardiovascular health outcomes (Alman et al., 2016; Stowell et al., 2019). Given the robust literature and multiple potential biological mechanisms of PM<sub>2.5</sub> exposure impacting cardiovascular disease (Adetona et al., 2016), it is not clear why the epidemiological literature for wildfire smoke exposure has been mixed. To date, several studies suggest inflammation and oxidative stress caused by PM<sub>2.5</sub> exposure may be responsible for the negative impacts of air pollution on the cardiovascular system (Xiao et al., 2003). Potential endogenous generation of reactive oxygen species (ROS) may be responsible for a majority of these negative effects, with some studies suggesting a similarity to the toxicity of other combustion products such as diesel fuel, and ROS increases are clearly linked to oxidative stress, causing induction of certain enzymes and subsequent airway inflammation. Finally, there is evidence that the organic constituents of wildfire particulate matter may be the primary drivers of the resulting airway inflammation (Bolling et al., 2009). Wildfire PM<sub>2.5</sub> may affect the cardiovascular system through other mechanisms, such as the crossing of ultrafine PM from airways to the circulations system

and pulmonary inflammation spillover to the vasculature of the body, both of which can be involved in additional oxidative stress (Brook et al., 2010).

In addition, our results suggest that there may be a synergistic effect of wildfire PM<sub>2.5</sub> and hotter temperatures on cardiovascular disease, given that wildfires typically have occurred during the warm season and hotter temperatures have also become more frequent and intense in recent years due to climate change. Epidemiologic studies have shown potential mechanisms for increased temperature to impact cardiovascular disease through thermoregulatory and endocrine-related mechanisms (Cheng et al., 2019; Stewart et al., 2017). Although there is only limited literature studying the synergistic effects of wildfire- PM<sub>2.5</sub> and temperature directly, there is growing literature assessing the association of ambient PM<sub>2.5</sub> and temperature on cardiovascular disease. And yet, because wildfires often occur during heat waves, the synergistic health effects of increased wildfire-derived PM<sub>2.5</sub> and temperatures are of particular concern (Shaposhnikov et al., 2014). Furthermore, the magnitude and duration of both heat waves and wildfires are likely to increase due to climate change (Abatzoglou & Williams, 2016; Argueso et al., 2016; Di Virgilio et al., 2019; Goss et al., 2020; Lyon et al., 2019; Mitchell et al., 2016). Future work should continue to investigate the combined impacts of exposure to extreme high temperatures and wildfire smoke on cardiovascular disease.

The findings presented in this study should be contextualized within its limitations. This study focuses on the wildfire seasons between 2004 to 2009 in California. However, wildfire activity has increased in recent years, suggesting that exposures to wildfire smoke have likely been higher and of longer duration in recent years (Liu et al., 2016). Utilizing more recent data could enable a better characterization of the current burden of disease due to exposure on smoke event days. Furthermore, as is common in air pollution epidemiological studies, certain



assumptions regarding the activities of the study population must be made. For instance, in our analyses, the health data used from California was supplied at the county level. Counties, especially in the West, can often cover very large geographical areas and are at a coarse spatial resolution for exposure data. However, monitors are typically placed in areas with greater population density in each county, likely capturing urban or semi-urban areas. Despite these limitations and potential exposure misclassification particularly in larger counties, this study estimates the effects of both cumulative and lagged smoke PM<sub>2.5</sub> exposure in California over multiple years. Given gaps in knowledge surrounding the effects of smoke exposure, especially cumulative effects, this investigation provided valuable information regarding non-acute (day of) non-lag distributed wildfire exposures.

The results of this analysis point to substantial increases in adverse respiratory and cardiovascular health outcomes due to multiple consecutive exposures to wildfire smoke PM<sub>2.5</sub>, with potentially differential risk to different subpopulations. As evidenced over the past decade, wildfires are increasing in frequency and intensity in California—a trend which shows no indication of significant change. Moving forward, it is evident that adaptation and prevention strategies must be put into place to protect the most vulnerable from exposure to wildfire smoke. These strategies should include improved statewide guidelines regarding actions to take during wildfire events, evacuation plans, school closures, proper protective equipment (i.e. masks), and when to remain indoors.

### **Acknowledgements**

This research was funded by NIH training grant T32ES023770 “Interdisciplinary Training in Climate and Health.

## References

- Abatzoglou, J. T., & Williams, A. P. (2016). Impact of anthropogenic climate change on wildfire across western US forests. *Proceedings of the National Academy of Sciences of the United States of America*, 113(42), 11770-11775. <https://doi.org/10.1073/pnas.1607171113>
- Adetona, O., Reinhardt, T. E., Domitrovich, J., Broyles, G., Adetona, A. M., Kleinman, M. T., Ottmar, R. D., & Naeher, L. P. (2016). Review of the health effects of wildland fire smoke on wildland firefighters and the public [Review]. *Inhalation toxicology*, 28(3), 95-139. <https://doi.org/10.3109/08958378.2016.1145771>
- Ager, A. A., Barros, A. M. G., Preisler, H. K., Day, M. A., Spies, T. A., Bailey, J. D., & Bolte, J. P. (2017). Effects of accelerated wildfire on future fire regimes and implications for the United States federal fire policy. *ECOLOGY AND SOCIETY*, 22(4). <https://doi.org/10.5751/ES-09680-220412>
- Aguilera, R., Corringham, T., Gershunov, A., & Benmarhnia, T. (2021). Wildfire smoke impacts respiratory health more than fine particles from other sources: observational evidence from Southern California. *Nat Commun*, 12(1), 1493. <https://doi.org/10.1038/s41467-021-21708-0>
- Alman, B. L., Pfister, G., Hao, H., Stowell, J., Hu, X., Liu, Y., & Strickland, M. J. (2016). The association of wildfire smoke with respiratory and cardiovascular emergency department visits in Colorado in 2012: a case crossover study [journal article]. *Environmental Health*, 15(1), 1-9. <https://doi.org/10.1186/s12940-016-0146-8>
- Analitis, A., Georgiadis, I., & Katsouyanni, K. (2012). Forest fires are associated with elevated mortality in a dense urban setting. *Occupational and Environmental Medicine*, 69(3), 158-162. <https://doi.org/10.1136/oem.2010.064238>
- Argueso, D., Di Luca, A., Perkins-Kirkpatrick, S. E., & Evans, J. P. (2016). Seasonal mean temperature changes control future heat waves. *Geophysical Research Letters*, 43(14), 7653-7660. <https://doi.org/10.1002/2016gl069408>
- Balch, J. K., Bradley, B. A., Abatzoglou, J. T., Nagy, R. C., Fusco, E. J., & Mahood, A. L. (2017). Human-started wildfires expand the fire niche across the United States. *Proceedings of the National Academy of Sciences of the United States of America*, 114(11), 2946-2951. <https://doi.org/10.1073/pnas.1617394114>
- Bell, M. L., Zanobetti, A., & Dominici, F. (2013). Evidence on Vulnerability and Susceptibility to Health Risks Associated With Short-Term Exposure to Particulate Matter: A Systematic

- Review and Meta-Analysis. *American Journal of Epidemiology*, 178(6), 865-876.  
<https://doi.org/10.1093/aje/kwt090>
- Bolling, A. K., Pagels, J., Yttri, K. E., Barregard, L., Sallsten, G., Schwarze, P. E., & Boman, C. (2009). Health effects of residential wood smoke particles: the importance of combustion conditions and physicochemical particle properties. *Particle and Fibre Toxicology*, 6, Article 29. <https://doi.org/10.1186/1743-8977-6-29>
- Brook, R. D., Rajagopalan, S., Pope, C. A., Brook, J. R., Bhatnagar, A., Diez-Roux, A. V., Holguin, F., Hong, Y., Luepker, R. V., Mittleman, M. A., Peters, A., Siscovick, D., Smith, S. C., Whitsel, L., & Kaufman, J. D. (2010). Particulate Matter Air Pollution and Cardiovascular Disease. *Circulation*, 121(21), 2331-2378.  
<https://doi.org/doi:10.1161/CIR.0b013e3181dbee1>
- Cal Fire. (2020). Top 20 Largest California Wildfires. In: Cal Fire.
- Chen, L. P., Verrall, K., & Tong, S. L. (2006). Air particulate pollution due to bushfires and respiratory hospital admissions in Brisbane, Australia. *International Journal of Environmental Health Research*, 16(3), 181-191.  
<https://doi.org/10.1080/09603120600641334>
- Cheng, J., Xu, Z. W., Bambrick, H., Prescott, V., Wang, N., Zhang, Y. Z., Su, H., Tong, S. L., & Hu, W. B. (2019). Cardiorespiratory effects of heatwaves: A systematic review and meta-analysis of global epidemiological evidence. *Environmental research*, 177, Article 108610. <https://doi.org/10.1016/j.envres.2019.108610>
- Cohen, A. J., Brauer, M., Burnett, R., Anderson, H. R., Frostad, J., Estep, K., Balakrishnan, K., Brunekreef, B., Dandona, L., Dandona, R., Feigin, V., Freedman, G., Hubbell, B., Jobling, A., Kan, H., Knibbs, L., Liu, Y., Martin, R., Morawska, L., . . . Forouzanfar, M. H. (2017). Estimates and 25-year trends of the global burden of disease attributable to ambient air pollution: an analysis of data from the Global Burden of Diseases Study 2015. *Lancet*, 389(10082), 1907-1918. [https://doi.org/10.1016/s0140-6736\(17\)30505-6](https://doi.org/10.1016/s0140-6736(17)30505-6)
- Coogan, S. C. P., Robinne, F. N., Jain, P., & Flannigan, M. D. (2019). Scientists' warning on wildfire - a Canadian perspective. *CANADIAN JOURNAL OF FOREST RESEARCH*, 49(9), 1015-1023. <https://doi.org/10.1139/cjfr-2019-0094>
- Delfino, R. J., Brummel, S., Wu, J., Stern, H., Ostro, B., Lipsett, M., Winer, A., Street, D. H., Zhang, L., Tjoa, T., & Gillen, D. L. (2009). The relationship of respiratory and cardiovascular hospital admissions to the southern California wildfires of 2003. *Occupational and Environmental Medicine*, 66(3), 189-197. <https://doi.org/10.1136/oem.2008.041376>

- Devlin, R. B., Ghio, A. J., Kehrl, H., Sanders, G., & Cascio, W. (2003). Elderly humans exposed to concentrated air pollution particles have decreased heart rate variability. *European Respiratory Journal*, 21, 76S-80S. <https://doi.org/10.1183/09031936.03.00402403>
- Di Virgilio, G., Evans, J. P., Blake, S. A. P., Armstrong, M., Dowd, A. J., Sharples, J., & McRae, R. (2019). Climate Change Increases the Potential for Extreme Wildfires. *Geophysical Research Letters*, 46(14), 8517-8526. <https://doi.org/10.1029/2019gl083699>
- Dominici, F., Peng, R. D., Bell, M. L., Pham, L., McDermott, A., Zeger, S. L., & Samet, J. M. (2006). Fine particulate air pollution and hospital admission for cardiovascular and respiratory diseases. *Jama-Journal of the American Medical Association*, 295(10), 1127-1134. <https://doi.org/10.1001/jama.295.10.1127>
- EPA., U. S. (2009). *Integrated Science Assessment for Particulate Matter*. <https://www.epa.gov/isa/integrated-science-assessment-isa-particulate-matter>
- Fann, N., Alman, B., Broome, R. A., Morgan, G. G., Johnston, F. H., Pouliot, G., & Rappold, A. G. (2018). The health impacts and economic value of wildland fire episodes in the US: 2008-2012. *Science of the Total Environment*, 610, 802-809. <https://doi.org/10.1016/j.scitotenv.2017.08.024>
- Frankenberg, E., McKee, D., & Thomas, D. (2005). Health consequences of forest fires in Indonesia. *Demography*, 42(1), 109-129. <https://doi.org/10.1353/dem.2005.0004>
- Fried, J. S., Gilles, J. K., Riley, W. J., Moody, T. J., de Blas, C. S., Hayhoe, K., Moritz, M., Stephens, S., & Torn, M. (2008). Predicting the effect of climate change on wildfire behavior and initial attack success. *Climatic Change*, 87, S251-S264. <https://doi.org/10.1007/s10584-007-9360-2>
- Fried, J. S., Torn, M. S., & Mills, E. (2004). The impact of climate change on wildfire severity: A regional forecast for northern California. *Climatic Change*, 64(1-2), 169-191. <https://doi.org/10.1023/B:CLIM.0000024667.89579.ed>
- Goss, M., Swain, D. L., Abatzoglou, J. T., Sarhadi, A., Kolden, C. A., Williams, A. P., & Diffenbaugh, N. S. (2020). Climate change is increasing the likelihood of extreme autumn wildfire conditions across California. *Environmental Research Letters*, 15(9), Article 094016. <https://doi.org/10.1088/1748-9326/ab83a7>
- Gouveia, N., & Fletcher, T. (2000). Time series analysis of air pollution and mortality: effects by cause, age and socioeconomic status. *Journal of Epidemiology and Community Health*, 54(10), 750-755. <https://doi.org/10.1136/jech.54.10.750>

- Henderson, S. B., Brauer, M., MacNab, Y. C., & Kennedy, S. M. (2011). Three Measures of Forest Fire Smoke Exposure and Their Associations with Respiratory and Cardiovascular Health Outcomes in a Population-Based Cohort. *Environmental health perspectives*, 119(9), 1266-1271. <https://doi.org/10.1289/ehp.1002288>
- Hutchinson, J. A., Vargo, J., Milet, M., French, N. H. F., Billmire, M., Johnson, J., & Hoshiko, S. (2018). The San Diego 2007 wildfires and Medi-Cal emergency department presentations, inpatient hospitalizations, and outpatient visits: An observational study of smoke exposure periods and a bidirectional case-crossover analysis. *Plos Medicine*, 15(7), Article e1002601. <https://doi.org/10.1371/journal.pmed.1002601>
- Ignotti, E., Hacon, S. D., Junger, W. L., Mourao, D., Longo, K., Freitas, S., Artaxo, P., & de Leon, A. (2010). Air pollution and hospital admissions for respiratory diseases in the subequatorial Amazon: a time series approach. *Cadernos De Saude Publica*, 26(4), 747-761. <https://doi.org/10.1590/s0102-311x2010000400017>
- Ignotti, E., Valente, J. G., Longo, K. M., Freitas, S. R., Hacon, S. D., & Netto, P. A. (2010). Impact on human health of particulate matter emitted from burnings in the Brazilian Amazon region. *Revista De Saude Publica*, 44(1), 121-130. <https://doi.org/10.1590/s0034-89102010000100013>
- Jacobson, L. D. V., Hacon, S. D., de Castro, H. A., Ignotti, E., Artaxo, P., & de Leon, A. (2012). Association between fine particulate matter and the peak expiratory flow of schoolchildren in the Brazilian subequatorial Amazon: A panel study. *Environmental research*, 117, 27-35. <https://doi.org/10.1016/j.envres.2012.05.006>
- Jones, C. G., Rappold, A., Vargo, J., Cascio, W. E., Kharrazi, M., McNally, B., Hoshiko, S., & Grp, C. S. (2020). Out-of-Hospital Cardiac Arrests and Wildfire-Related Particulate Matter During 2015-2017 California Wildfires. *Journal of the American Heart Association*, 9(8), Article e014125. <https://doi.org/10.1161/jaha.119.014125>
- Kerem, E. (1996). Why do infants and small children breathe faster? *Pediatric pulmonology*, 21(1), 65-68. [https://doi.org/10.1002/1099-0496\(199601\)21:1<65::Aid-ppul1950210104>3.0.Co;2-r](https://doi.org/10.1002/1099-0496(199601)21:1<65::Aid-ppul1950210104>3.0.Co;2-r)
- Kolbe, A., & Gilchrist, K. L. (2009). An extreme bushfire smoke pollution event: health impacts and public health challenges. *New South Wales Public Health Bulletin*, 20, 19-23.
- Kunzli, N., Avol, E., Wu, J., Gauderman, W. J., Rappaport, E., Millstein, J., Bennion, J., McConnell, R., Gilliland, F. D., Berhane, K., Lurmann, F., Winer, A., & Peters, J. M. (2006). Health effects of the 2003 Southern California wildfires on children. *American Journal of*

- Respiratory and Critical Care Medicine*, 174(11), 1221-1228.  
<https://doi.org/10.1164/rccm.200604-519OC>
- Le, G. E., Breyse, P. N., McDermott, A., Eftim, S. E., Geyh, A., Berman, J. D., & Curriero, F. C. (2014). Canadian Forest Fires and the Effects of Long-Range Transboundary Air Pollution on Hospitalizations among the Elderly. *Isprs International Journal of Geo-Information*, 3(2), 713-731. <https://doi.org/10.3390/ijgi3020713>
- Leibel, S., Nguyen, M., Brick, W., Parker, J., Ilango, S., Aguilera, R., Gershunov, A., & Benmarhnia, T. (2020). Increase in Pediatric Respiratory Visits Associated with Santa Ana Wind-Driven Wildfire Smoke and PM2.5 Levels in San Diego County. *Annals of the American Thoracic Society*, 17(3), 313-320. <https://doi.org/10.1513/AnnalsATS.201902-1500C>
- Littell, J. S., McKenzie, D., Peterson, D. L., & Westerling, A. L. (2009). Climate and wildfire area burned in western U. S. ecoprovinces, 1916-2003. *Ecological Applications*, 19(4), 1003-1021. <https://doi.org/10.1890/07-1183.1>
- Liu, J. C., Mickley, L. J., Sulprizio, M. P., Yue, X., Peng, R. D., Dominici, F., & Bell, M. L. (2016). Future respiratory hospital admissions from wildfire smoke under climate change in the Western US. *Environmental Research Letters*, 11(12), Article 124018. <https://doi.org/10.1088/1748-9326/11/12/124018>
- Liu, J. C., Pereira, G., Uhl, S. A., Bravo, M. A., & Bell, M. L. (2015). A systematic review of the physical health impacts from non-occupational exposure to wildfire smoke. *Environmental research*, 136, 120-132. <https://doi.org/10.1016/j.envres.2014.10.015>
- Liu, J. C., Wilson, A., Mickley, L. J., Dominici, F., Ebisu, K., Wang, Y., Sulprizio, M. P., Peng, R. D., Yue, X., Son, J. Y., Anderson, G. B., & Bell, M. L. (2017). Wildfire-specific Fine Particulate Matter and Risk of Hospital Admissions in Urban and Rural Counties [Article]. *Epidemiology*, 28(1), 77-85. <https://doi.org/10.1097/ede.0000000000000556>
- Liu, J. C., Wilson, A., Mickley, L. J., Ebisu, K., Sulprizio, M. P., Wang, Y., Peng, R. D., Yue, X., Dominici, F., & Bell, M. L. (2017). Who Among the Elderly Is Most Vulnerable to Exposure to and Health Risks of Fine Particulate Matter From Wildfire Smoke? *American Journal of Epidemiology*, 186(6), 730-735. <https://doi.org/10.1093/aje/kwx141>
- Lyon, B., Barnston, A. G., Coffel, E., & Horton, R. M. (2019). Projected increase in the spatial extent of contiguous US summer heat waves and associated attributes. *Environmental Research Letters*, 14(11), Article 114029. <https://doi.org/10.1088/1748-9326/ab4b41>

- Malig, B. J., Fairley, D., Pearson, D., Wu, X. M., Ebisu, K., & Basu, R. (2021). Examining fine particulate matter and cause-specific morbidity during the 2017 North San Francisco Bay wildfires. *Science of the Total Environment*, 787, Article 147507. <https://doi.org/10.1016/j.scitotenv.2021.147507>
- Martin, K. L., Hanigan, I. C., Morgan, G. G., Henderson, S. B., & Johnston, F. H. (2013). Air pollution from bushfires and their association with hospital admissions in Sydney, Newcastle and Wollongong, Australia 1994-2007. *Australian and New Zealand Journal of Public Health*, 37(3), 238-243. <https://doi.org/10.1111/1753-6405.12065>
- McCracken, J. P., Wellenius, G. A., Bloomfield, G. S., Brook, R. D., Tolunay, H. E., Dockery, D. W., Rabadan-Diehl, C., Checkley, W., & Rajagopalan, S. (2012). Household Air Pollution from Solid Fuel Use: Evidence for Links to CVD. *Glob Heart*, 7(3), 223-234. <https://doi.org/10.1016/j.gheart.2012.06.010>
- Medina-Ramon, M., Zanobetti, A., & Schwartz, J. (2006). The effect of ozone and PM10 on hospital admissions for pneumonia and chronic obstructive pulmonary disease: A national multicity study. *American Journal of Epidemiology*, 163(6), 579-588. <https://doi.org/10.1093/aje/kwj078>
- Mirabelli, M. C., Kunzli, N., Avol, E., Gilliland, F. D., Gauderman, W. J., McConnell, R., & Peters, J. M. (2009). Respiratory Symptoms Following Wildfire Smoke Exposure Airway Size as a Susceptibility Factor. *Epidemiology*, 20(3), 451-459. <https://doi.org/10.1097/EDE.0b013e31819d128d>
- Mitchell, D., Heaviside, C., Vardoulakis, S., Huntingford, C., Masato, G., Guillod, B. P., Frumhoff, P., Bowery, A., Wallom, D., & Allen, M. (2016). Attributing human mortality during extreme heat waves to anthropogenic climate change. *Environmental Research Letters*, 11(7), Article 074006. <https://doi.org/10.1088/1748-9326/11/7/074006>
- Morgan, G., Sheppeard, V., Khalaj, B., Ayyar, A., Lincoln, D., Jalaludin, B., Beard, J., Corbett, S., & Lumley, T. (2010). Effects of Bushfire Smoke on Daily Mortality and Hospital Admissions in Sydney, Australia. *Epidemiology*, 21(1), 47-55. <https://doi.org/10.1097/EDE.0b013e3181c15d5a>
- Mott, J. A., Mannino, D. M., Alverson, C. J., Kiyu, A., Hashim, J., Lee, T., Falter, K., & Redd, S. C. (2005). Cardiorespiratory hospitalizations associated with smoke exposure during the 1997 Southeast Asian forest fires. *International Journal of Hygiene and Environmental Health*, 208(1-2), 75-85. <https://doi.org/10.1016/j.ijheh.2005.01.018>
- Mott, J. A., Meyer, P., Mannino, D., Redd, S. C., Smith, E. M., Gotway-Crawford, C., & Chase, E. (2002). Wildland forest fire smoke: health effects and intervention evaluation, Hoopa,



- California, 1999. *Western Journal of Medicine*, 176(3), 157-162.  
<https://doi.org/10.1136/ewjm.176.3.157>
- Mueller, S. E., Thode, A. E., Margolis, E. Q., Yocom, L. L., Young, J. D., & Iniguez, J. M. (2020). Climate relationships with increasing wildfire in the southwestern US from 1984 to 2015. *Forest Ecology and Management*, 460.  
<https://doi.org/10.1016/j.foreco.2019.117861>
- Murray, C. J. L., Aravkin, A. Y., Zheng, P., Abbafati, C., & Abbas, K. M. (2020). Global burden of 87 risk factors in 204 countries and territories, 1990-2019: a systematic analysis for the Global Burden of Disease Study 2019. *Lancet*, 396(10258), 1223-1249. <Go to ISI>://WOS:000579154000008
- Naeher, L. P., Brauer, M., Lipsett, M., Zelikoff, J. T., Simpson, C. D., Koenig, J. Q., & Smith, K. R. (2007). Woodsmoke health effects: A review. *Inhalation toxicology*, 19(1), 67-106.  
<https://doi.org/10.1080/08958370600985875>
- Rappold, A. G., Stone, S. L., Cascio, W. E., Neas, L. M., Kilaru, V. J., Carraway, M. S., Szykman, J. J., Ising, A., Cleve, W. E., Meredith, J. T., Vaughan-Batten, H., Deyneka, L., & Devlin, R. B. (2011). Peat Bog Wildfire Smoke Exposure in Rural North Carolina Is Associated with Cardiopulmonary Emergency Department Visits Assessed through Syndromic Surveillance. *Environmental health perspectives*, 119(10), 1415-1420.  
<https://doi.org/10.1289/ehp.1003206>
- Reid, C. E. (2014). *Spatiotemporal exposure modeling and epidemiological analyses of the 2008 northern California wildfires* [University of California, Berkeley].  
[https://escholarship.org/content/qt53d121p4/qt53d121p4\\_noSplash\\_4a467e5aa1acfb24042acbf39a92ca.pdf](https://escholarship.org/content/qt53d121p4/qt53d121p4_noSplash_4a467e5aa1acfb24042acbf39a92ca.pdf)
- Reid, C. E., Brauer, M., Johnston, F. H., Jerrett, M., Balmes, J. R., & Elliott, C. T. (2016). Critical Review of Health Impacts of Wildfire Smoke Exposure. *Environmental health perspectives*, 124(9), 1334-1343. <https://doi.org/10.1289/ehp.1409277>
- Reid, C. E., Considine, E. M., Watson, G. L., Telesca, D., Pfister, G. G., & Jerrett, M. (2019). Associations between respiratory health and ozone and fine particulate matter during a wildfire event. *Environment international*, 129, 291-298.  
<https://doi.org/10.1016/j.envint.2019.04.033>
- Sacks, J. D., Stanek, L. W., Luben, T. J., Johns, D. O., Buckley, B. J., Brown, J. S., & Ross, M. (2011). Particulate matter-induced health effects: who is susceptible? *Environmental health perspectives*, 119(4), 446-454. <https://doi.org/10.1289/ehp.1002255>



- Shaposhnikov, D., Revich, B., Bellander, T., Bedada, G. B., Bottai, M., Kharkova, T., Kvasha, E., Lezina, E., Lind, T., Semutnikova, E., & Pershagen, G. (2014). Mortality Related to Air Pollution with the Moscow Heat Wave and Wildfire of 2010. *Epidemiology*, 25(3), 359-364. <https://doi.org/10.1097/ede.0000000000000090>
- Shusterman, D., Kaplan, J. Z., & Canabarro, C. (1993). Immediate health-effects of an urban wildfire. *Western Journal of Medicine*, 158(2), 133-138. [Go to ISI>://WOS:A1993KM08800001](https://www.ncbi.nlm.nih.gov/pubmed/12800001)
- Stewart, S., Keates, A. K., Redfern, A., & McMurray, J. J. V. (2017). Seasonal variations in cardiovascular disease. *Nature Reviews Cardiology*, 14(11), 654-664. <https://doi.org/10.1038/nrcardio.2017.76>
- Stowell, J. D., Geng, G., Saikawa, E., Chang, H. H., Fu, J., Yang, C.-E., Zhu, Q., Liu, Y., & Strickland, M. J. (2019). Associations of wildfire smoke PM2.5 exposure with cardiorespiratory events in Colorado 2011–2014. *Environment international*, 133, 105151. [https://doi.org/https://doi.org/10.1016/j.envint.2019.105151](https://doi.org/10.1016/j.envint.2019.105151)
- Sutherland, E. R., Make, B. J., Vedal, S., Zhang, L. N., Dutton, S. J., Murphy, J. R., & Silkoff, P. E. (2005). Wildfire smoke and respiratory symptoms in patients with chronic obstructive pulmonary disease. *Journal of Allergy and Clinical Immunology*, 115(2), 420-422. <https://doi.org/10.1016/j.jaci.2004.11.030>
- Thomason, S., & Bernhardt, A. (2020). *Front-line Essential Jobs in California: A Profile of Job Worker Characteristics*. UC Berkeley. <https://laborcenter.berkeley.edu/front-line-essential-jobs-in-california-a-profile-of-job-and-worker-characteristics/>
- Westerling, A. L. (2018). *Wildfire Simulations for California's Fourth Climate Change Assessment: Projecting Changes in Extreme Wildfire Events with a Warming Climate*. [https://www.energy.ca.gov/sites/default/files/2019-11/Projections\\_CCCA4-CEC-2018-014\\_ADA.pdf](https://www.energy.ca.gov/sites/default/files/2019-11/Projections_CCCA4-CEC-2018-014_ADA.pdf)
- Westerling, A. L., Hidalgo, H. G., Cayan, D. R., & Swetnam, T. W. (2006). Warming and earlier spring increase western US forest wildfire activity. *Science*, 313(5789), 940-943. <https://doi.org/10.1126/science.1128834>
- Wu, J., Winer, A. M., & Delfino, R. J. (2006). Exposure assessment of particulate matter air pollution before, during, and after the 2003 Southern California wildfires. *Atmospheric Environment*, 40(18), 3333-3348. <https://doi.org/10.1016/j.atmosenv.2006.01.056>
- Xiao, G. G., Wang, M. Y., Li, N., Loo, J. A., & Nel, A. E. (2003). Use of proteomics to demonstrate a hierarchical oxidative stress response to diesel exhaust particle chemicals in a

macrophage cell line. *Journal of Biological Chemistry*, 278(50), 50781-50790.  
<https://doi.org/10.1074/jbc.M306423200>

DRAFT

**Table 1.** Average wildfire PM<sub>2.5</sub> concentrations on smoke event days and non-smoke event days across all counties in California using different percentile thresholds from 2004-2009. Percentile thresholds represent the percentile of all cumulative (0-1 day) wildfire PM<sub>2.5</sub> concentrations. A smoke event day occurred when the sum of the current and preceding day wildfire PM<sub>2.5</sub> was above the 98<sup>th</sup> percentile of cumulative two-day wildfire PM<sub>2.5</sub>.

<b>Percentile Threshold</b>	<b>Type</b>	<b>Wildfire PM<sub>2.5</sub> (µg/m<sup>3</sup>)</b>
<i>Cumulative 0-1 day, 94% (52.8 µg/m<sup>3</sup>)</i>	Smoke Event Days	33.3
	Non-Smoke Event Days	2.15
	Difference	31.15
<i>Cumulative 0-1 day, 96% (72.2 µg/m<sup>3</sup>)</i>	Smoke Event Days	38.3
	Non-Smoke Event Days	2.59
	Difference	35.71
<i>Cumulative 0-1 day, 98% (85.4 µg/m<sup>3</sup>)</i>	Smoke Event Days	45.8
	Non-Smoke Event Days	3.17
	Difference	42.63
<i>Cumulative 0-1 day, 99% (135.7 µg/m<sup>3</sup>)</i>	Smoke Event Days	52.4
	Non-Smoke Event Days	3.53
	Difference	48.87

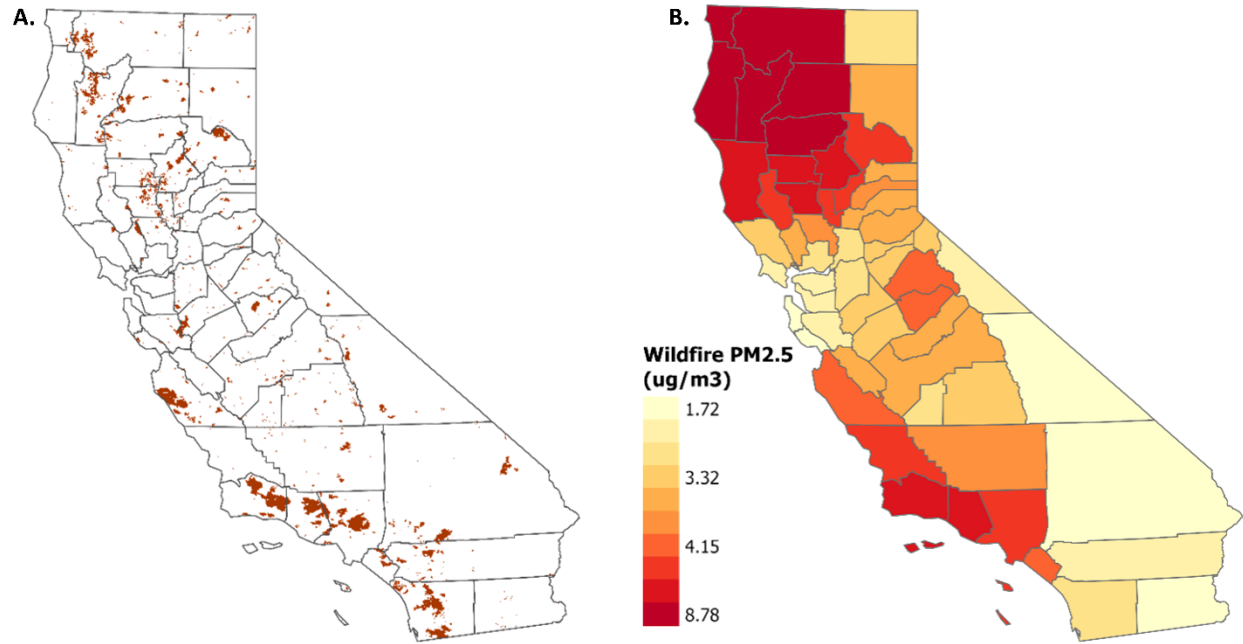
**Table 2.** Average annual hospital visits (per 100,000 people) across all counties in California, 2004-2009.

	All Respiratory	Asthma	Acute Respiratory Infections	COPD*	All Cardiovascular	IHD**	Heart Failure
<b>Total #</b>	<b>17,111</b>	<b>1,757</b>	<b>738</b>	<b>2,903</b>	<b>29,217</b>	<b>8,577</b>	<b>5,146</b>
<b>Age</b>							
0-5	1,451 (8.4)	359 (20.4)	398 (53.9)	8 (0.2)	66 (0.2)	0 (0.0)	8 (0.1)
6-18	572 (0.3)	190 (10.8)	47 (6.3)	6 (0.2)	112 (0.3)	1 (0.0)	4 (0.1)
19-64	5,858 (34.3)	818 (46.5)	166 (22.4)	997 (34.3)	10,439 (35.7)	3,729 (43.5)	1,333 (25.9)
65+	9,231 (53.9)	389 (22.1)	127 (17.2)	1,891 (65.1)	18,601 (63.6)	4,847 (56.5)	3,800 (73.8)
<b>Race</b>							
White	12,690 (74.2)	1,022 (58.1)	404 (54.7)	2,458 (84.6)	22,129 (75.7)	6,552 (76.4)	3,826 (74.3)
Black	721 (4.2)	180 (10.2)	28 (3.8)	98 (3.3)	1,281 (4.3)	273 (3.2)	315 (6.1)
Asian	602 (3.5)	89 (5.0)	29 (3.8)	65 (2.2)	1,129 (3.8)	339 (3.9)	185 (3.6)
Hispanic	2,441 (14.2)	375 (21.3)	237 (32.1)	210 (7.2)	3,420 (11.7)	935 (10.9)	657 (12.7)

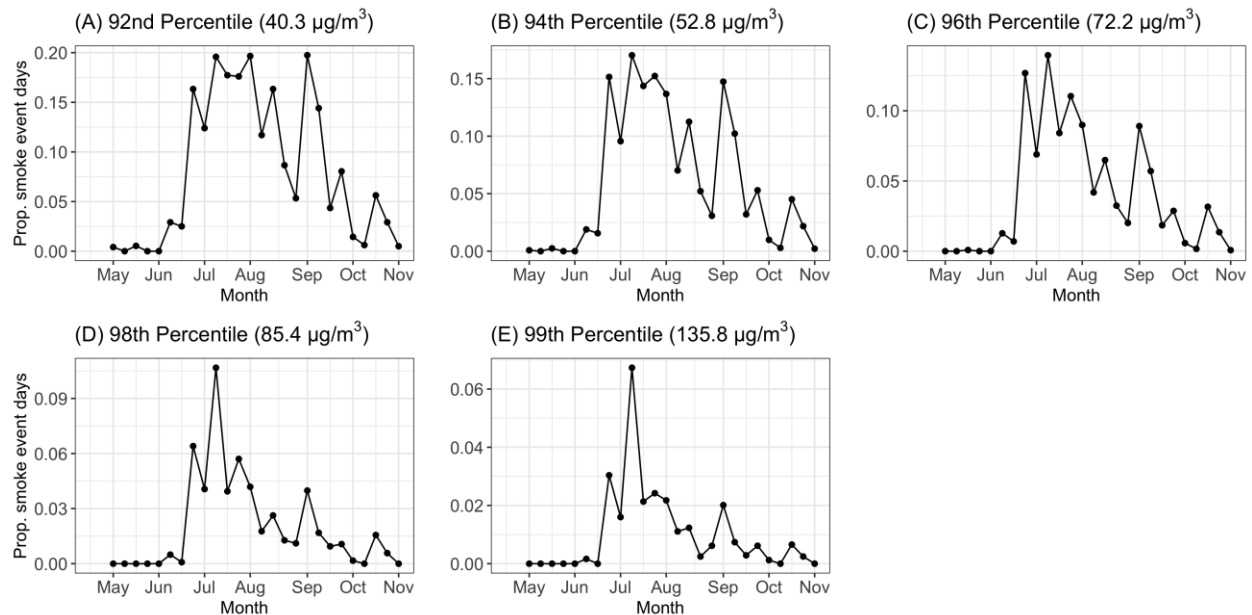
\*COPD: Chronic Obstructive Pulmonary Disease

\*\*IHD: Ischemic Heart Disease

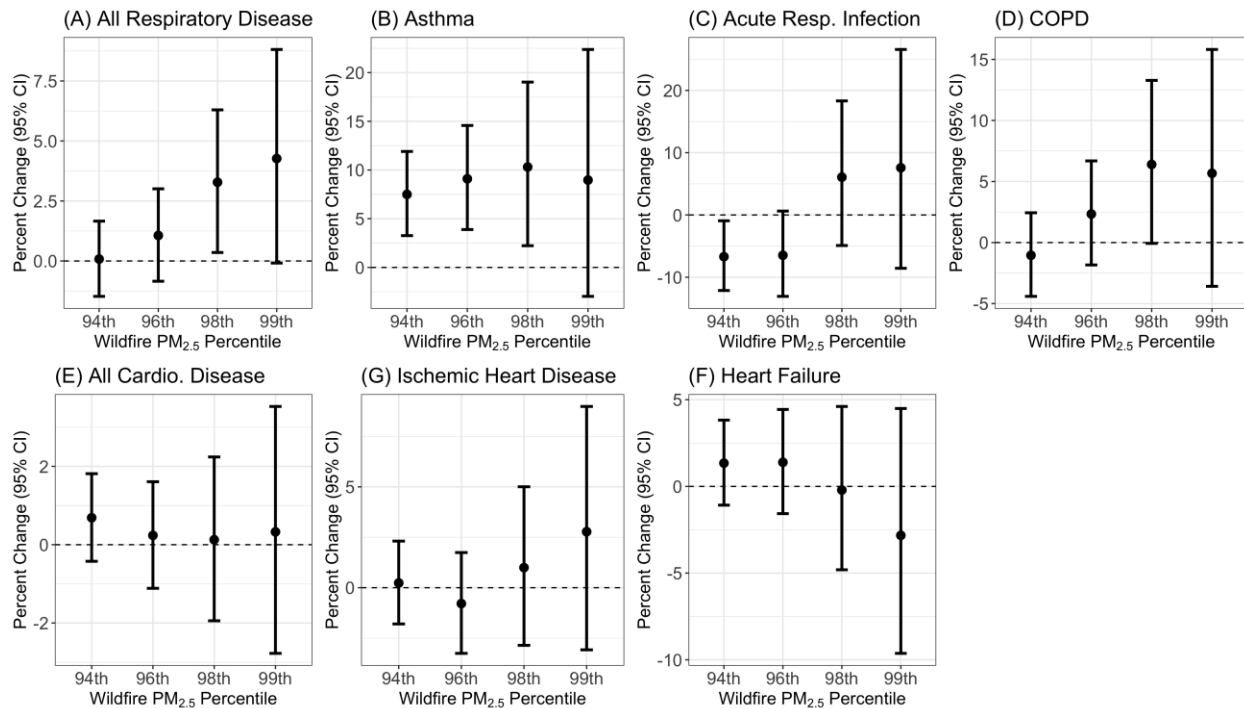
**Figure 1. California wildfire activity during study period.** Panel (A) depicts average daily  $\text{PM}_{2.5}$  emitted by wildfires ( $\mu\text{g}/\text{m}^3$ ) in California counties from May-October 2004-2009. Panel (B) indicates locations of satellite-derived burned area (red) shown across California from 2004-2009 from the MODIS MCD64A1 Collection 6 monthly burned area product.



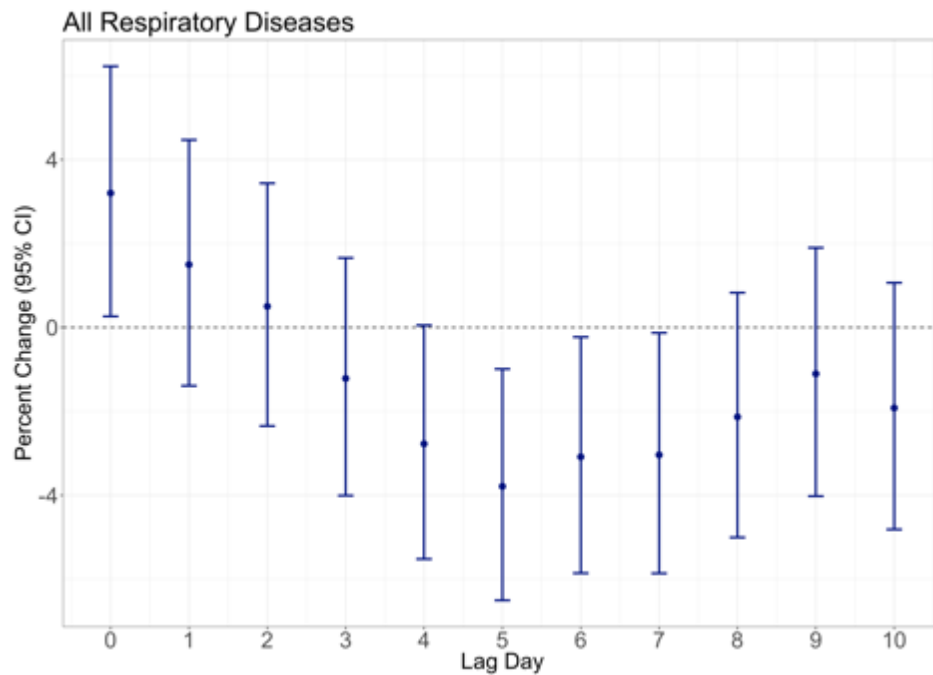
**Figure 2. Seasonal trends in wildfire emissions across the summer season (May-Oct).** (A) Proportion of days per week that are smoke wave days, i.e. sum of the current and preceding day wildfire  $PM_{2.5}$  above the 92<sup>nd</sup> percentile of two-day wildfire  $PM_{2.5}$ . (B)-(E) same as for (A) but using 94<sup>th</sup> percentile, 96<sup>th</sup> percentile, 98<sup>th</sup> percentile, and 99<sup>th</sup> percentile, respectively.



**Figure 3** Effect of wildfire emissions on all health outcomes. Estimates and 95% confidence intervals on the y-axis represent the percent change in the number of hospital visits associated with a smoke event day compared to a non-smoke event day. A smoke event day occurred when the sum of the current and preceding day wildfire  $PM_{2.5}$  was above the percentile (x-axis) of cumulative two-day wildfire  $PM_{2.5}$ .

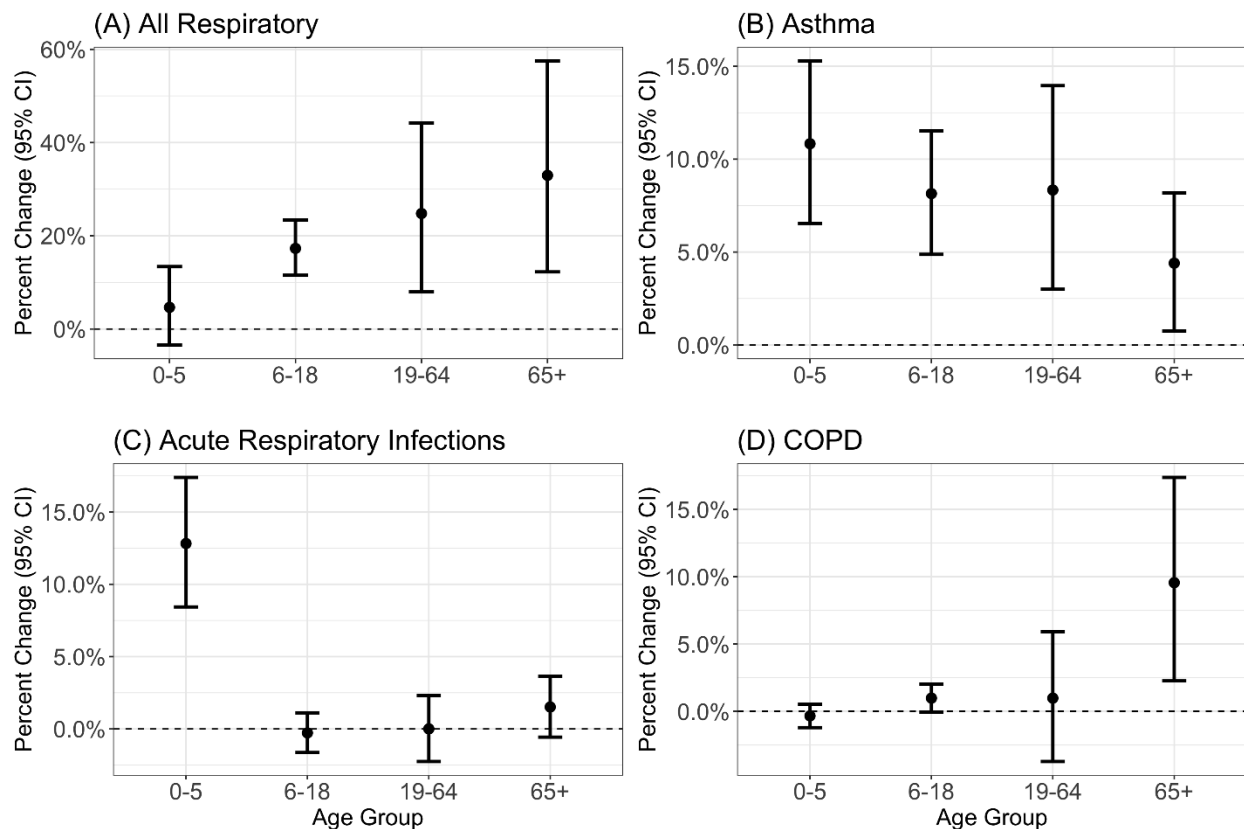


**Figure 4** Association of single wildfire days lagged 0-10 days with hospital visits for all respiratory diseases. Estimates and 95% confidence intervals (y-axis) represent the percent change in the number of hospital visits associated with a wildfire day compared to a non-wildfire day lagged 0-10 days (x-axis). A single wildfire day occurred when the current day wildfire  $PM_{2.5}$  was above the 98<sup>th</sup> percentile of daily wildfire  $PM_{2.5}$ .

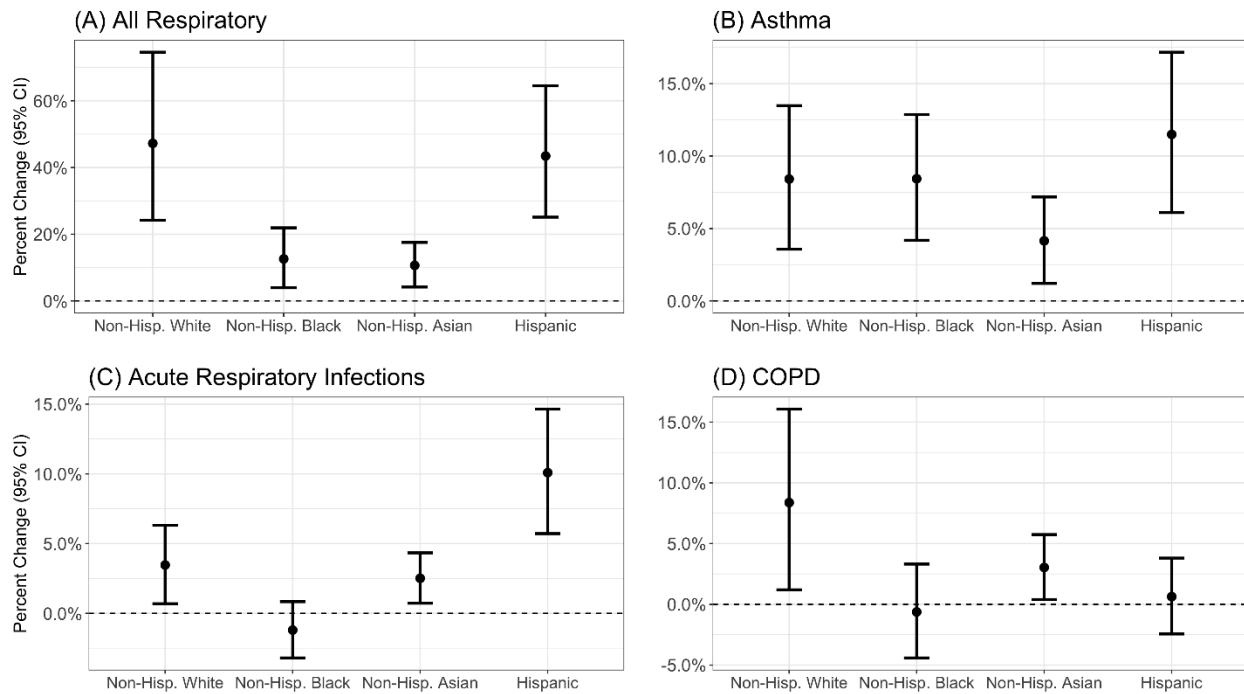




**Figure 5.** Results from age stratification analyses for (A) all respiratory outcomes, (B) asthma, (C) acute respiratory infections, and (D) COPD. Estimates and 95% confidence intervals (y-axis) represent the percent change in the number of hospital visits associated with a smoke event day compared to a non-smoke event day for all age groups (x-axis). A smoke event day occurred when the sum of the current and preceding day wildfire  $PM_{2.5}$  was above the 98<sup>th</sup> percentile of cumulative two-day wildfire  $PM_{2.5}$ .



**Figure 6.** Associations between smoke wave days and hospital visits for respiratory outcomes stratified by race group. Different definitions of a smoke wave day are shown on the x-axis. A smoke wave day occurred when the sum of the current and preceding day wildfire  $PM_{2.5}$  was above the 98<sup>th</sup> percentile of cumulative two-day wildfire  $PM_{2.5}$ . The y-axes show estimated percent change in hospital visits for outcome associated with a smoke wave day compared to a non-smoke wave day.



**Figure 7.** Results from stratification analyses for (A) all cardiovascular disease, (B) Ischemic Heart Disease, and (C) Heart Failure. Estimates and 95% confidence intervals (y-axis) represent the percent change in the number of hospital visits for each outcome associated with a smoke event day compared to a non-smoke event day for all age and race strata (x-axis). A smoke event day occurred when the sum of the current and preceding day wildfire PM<sub>2.5</sub> was above the 98<sup>th</sup> percentile of cumulative two-day wildfire PM<sub>2.5</sub>.

