

Episodic Buckling and Collapse – An alternative to the Slow Slip hypothesis

Jyoti Behura^{1,1,1,1}, Shayan Mehrani^{2,2,2,2}, Farnoush Forghani^{3,3}, and Farnoush Forghani^{4,4}

¹Seismic Science LLC

²Colorado School of Mines

³University of Colorado, Anschutz Medical Campus

⁴University of Colorado

March 14, 2020

Abstract

We observe a remarkable correlation between the inter-tremor time interval and the slenderness ratio of the overriding plate in subduction zones all over the world. In order to understand this phenomenon better, we perform numerical simulations of deformation as well as study the 3D surficial deformation of the overriding continental crust in Cascadia and Alaska using GPS data. The numerical modeling studies show that critical load and slenderness ratio indeed have an inverse nonlinear relation between them (identical to the classical Eulers critical load relation), and very similar to the non-linear relationship observed between the inter-tremor time interval and the slenderness ratio of the overriding plate. Assuming that all continental wedges experience similar stress rates, the critical stress should be approximately directly proportional to the inter-tremor time interval. Therefore, we can use inter-tremor time interval as a proxy for critical stress. From the above analysis, we conclude that the observed relationship between the inter-tremor time interval and the slenderness ratio of the overriding plate is a result of buckling of the overriding continental plate. In addition to the above numerical analysis, we analyze the surficial 3D spatio-temporal displacements of the overriding plates in Cascadia and Alaska using 3-component GPS data. We find that these deformations are consistent with the buckling of the overriding continental crust. Based on these novel observations, we propose an Episodic Buckling and Collapse model of subduction zones where periodic tectonic-tremor activity and geodetic changes, result from the episodic buckling of the overriding continental crust and its rapid collapse on the subducting oceanic slab. According to this model, geodetic measurements, previously inferred as slow slip, are the surficial expressions of slowly-evolving buckling and rapid collapse of the overriding plate, while tremor swarms result from the striking of the collapsing overriding plate on the subducting slab (as opposed to slipping or shearing). All existing scientific observations and findings, previously interpreted in the light of the Slow Slip hypothesis, are demonstrably explained by the proposed model.

Episodic Buckling and Collapse – An alternative to the Slow Slip hypothesis

Jyoti Behura^{1,2,*}, Shayan Mehrani² & Farnoush Forghani³

¹Seismic Science LLC

²Colorado School of Mines

³University of Colorado, Denver



We observe a remarkable correlation between the inter-tremor time interval and the slenderness ratio of the overriding plate in subduction zones all over the world. In order to understand this phenomenon better, we perform numerical simulations of deformation as well as study the 3D surficial deformation of the overriding continental crust in Cascadia and Alaska using GPS data. The numerical modeling studies show that critical load and slenderness ratio indeed have an inverse nonlinear relation between them (identical to the classical Eulers critical load relation), and very similar to the non-linear relationship observed between the inter-tremor time interval and the slenderness ratio of the overriding plate. Assuming that all continental wedges experience similar stress rates, the critical stress should be approximately directly proportional to the inter-tremor time interval. Therefore, we can use inter-tremor time interval as a proxy for critical stress. From the above analysis, we conclude that the observed relationship between the inter-tremor time interval and the slenderness ratio of the overriding plate is a result of buckling of the overriding continental plate. In addition to the above numerical analysis, we analyze the surficial 3D spatio-temporal displacements of the overriding plates in Cascadia and Alaska using 3-component GPS data. We find that these deformations are consistent with the buckling of the overriding continental crust. Based on these novel observations, we propose an Episodic Buckling and Collapse model of subduction zones where periodic tectonic-tremor activity and geodetic changes, result from the episodic buckling of the overriding continental crust and its rapid collapse on the subducting oceanic slab. According to this model, geodetic measurements, previously inferred as slow slip, are the surficial expressions of slowly-evolving buckling and rapid collapse of the overriding plate, while tremor swarms result from the striking of the collapsing overriding plate on the subducting slab (as opposed to slipping or shearing). All existing scientific observations and findings, previously interpreted in the light of the Slow Slip hypothesis, are demonstrably explained by the proposed model.

1 THE BUCKLING CONTINENTAL WEDGE

We observe a remarkable relationship between the inter-tremor time interval and the slenderness ratio of the overriding plate in subduction zones all over the world. Figure 1 shows this inverse nonlinear relationship between inter-tremor time interval and slenderness ratio for continental wedges in various subduction zones. The inter-tremor time interval is the average time interval observed between tremor episodes at different subduction zones. Slenderness ratio of a continental wedge is defined as the ratio of the length of the wedge to its maximum thickness, which is also equal to the inverse of the slope of the plate interface in the subduction zone.

In order to understand this interesting phenomenon, we perform numerical simulations of overriding plate deformation as well as analyze the 3D surficial deformation of the overriding continental crust in Cascadia and Alaska using GPS data.

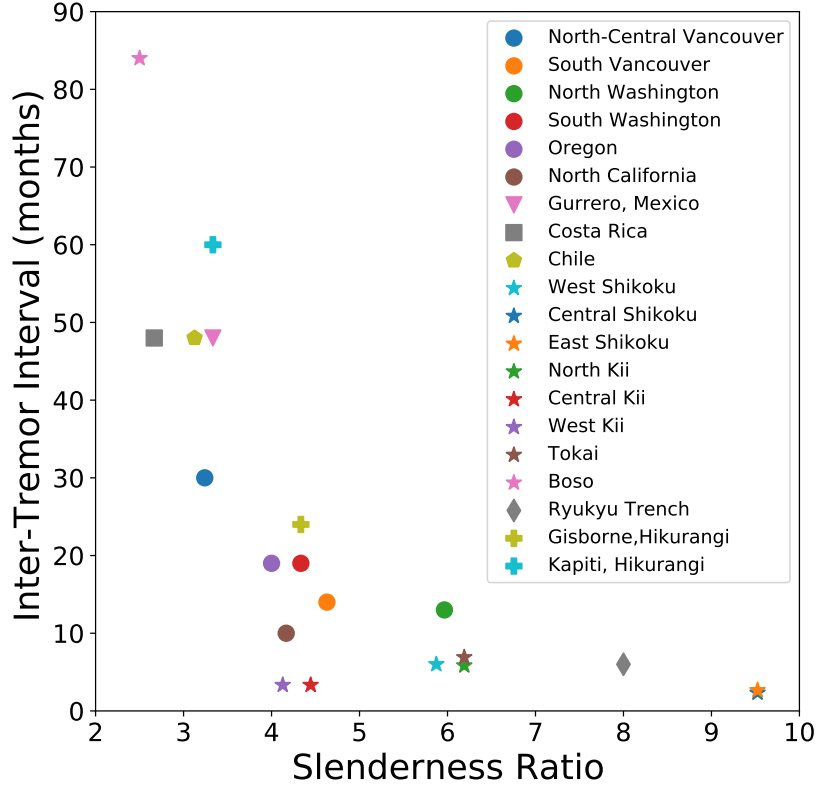


Fig. 1: **Inter-tremor time interval and the slenderness ratio of continental wedges observed in subduction zones all over the world.** Data used in this plot comes from Cascadia: Kao et al.¹, Wech et al.², Beroza and Ide³, Obara⁴; Nankai: Beroza and Ide³, Obara⁴, Ozawa et al.⁵; Ryukyu: Obara⁴, Arai et al.⁶; Guerrero, Mexico: Beroza and Ide³, Obara⁴; Costa Rica: Beroza and Ide³, Outerbridge et al.⁷; Chile: Pasten-Araya et al.⁸, Klein et al.⁹; Hikurangi: Obara⁴, Wallace and Beavan¹⁰. The slenderness ratio of a continental wedge is computed by taking the multiplicative inverse of the average plate interface slope between the depth contours of 10 and 40 km.

Based on the above observations, numerical modeling of deformation, and GPS field data analysis, we present a Episodic Buckling and Collapse model of the subduction process where the continental wedge episodically buckles and collapses. According to this model, geodetic observations previously interpreted as slow slip, are a surface manifestation of the buckling of the overriding continental crust and its subsequent rapid collapse on top of the subducting oceanic slab. The said collapse-related striking of the continental crust on the subducting slab results in tremors and the collapse itself shows up as rapid reversals in the horizontal GPS component. The proposed subduction model has significant and direct implication for forecasting of megathrust earthquakes and provides a ‘breathing’ mechanism for the upwelling and flow of magmatic fluids from the upper mantle to the shallow crust. A preliminary version of this model was initially proposed in Behura et al.¹¹ and has been modified here.

2 NUMERICAL MODELING OF CONTINENTAL WEDGE DEFORMATION

2.1 Euler Buckling

Under compressive stresses slender beams spontaneously bend to form curved shapes^{12,13}. When the applied stress exceeds the yield strength, the material experiences an irreversible plastic or brittle deformation. *Buckling, on the other hand, occurs at stresses much lower than the yield strength of the structure*^{12,13}. The buckling of beams is determined by the material’s Young’s modulus and its slenderness. Also, the more slender the structure, lower is the critical stress needed for buckling. Slenderness is a measure of the tendency of the beam to buckle and is quantified by the slenderness ratio – the ratio between the effective length of the beam and its radius of gyration^{12–14}. For a given slenderness ratio, there is a critical load

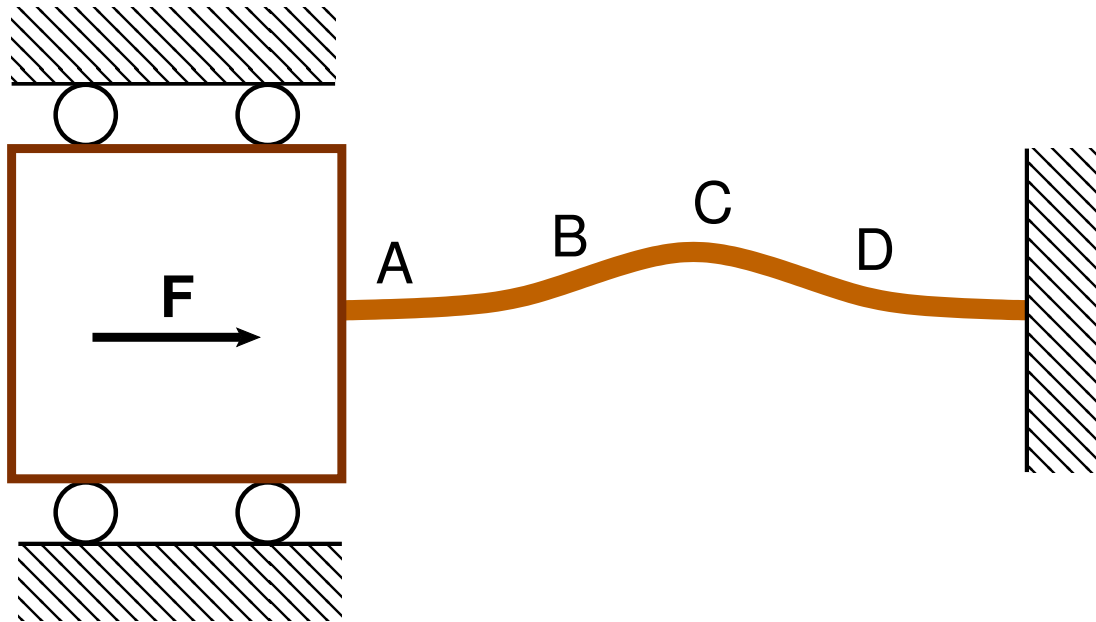


Fig. 2: **Schematic of Euler buckling mode with both ends fixed.** Stress F is applied by the subducting slab at the locked zone (seaward fixed end). The landward fixed end results from the immovable back-arc continental crust. Locations A, B, C, and D, correspond to the positions on the continental crust with their net displacement analyzed later in Figure 5.

(lower than the yield stress of the material), at which the wedge will bend (buckling/folding) before it can break.

Geological fold structures, that form under various stress and pressure conditions and are observed at a wide range of scales, are a prime example of buckling.

In subduction zones, the overriding continental crust may be considered as a collection of trench-perpendicular slender beams (because of the plane stress imposed by the subducting slab) and may buckle under the compressive stress applied by the subducting slab at the locked zone. Given that the average compressive stress exerted by spreading ridges is approximately 25 MPa¹⁵ and the average yield strength of continental lithosphere is close to 400 MPa^{16,17}, we expect buckling to be the predominant deformation mechanism (instead of plastic or brittle behavior). A schematic scenario of forces and boundary conditions experienced by the continental crust is shown in Figure 2. The seaward locked zone and the landward thick continental crust would result in deformation akin to the Euler buckling mode where both ends are fixed^{12,13}. The seaward end, however, can slide because of the landward movement of the oceanic crust (Figure 2). Such a buckling mode results in not only horizontal displacements but also significant vertical strain in the continental crust.

In order to ascertain and verify the above intuition, we perform numerical simulation of the static deformation of wedges by subjecting them to similar forces and boundary conditions encountered at subduction zones.

2.2 Numerical Simulation of Buckling

Here, we simulate the deformation of a wedge-shaped body (akin to the overriding continental wedge) subjected to stresses and boundary conditions encountered by the continental crust in subduction zones as shown in Figure 3. All numerical simulations are carried out in Solidworks¹⁸.

Computational expense and software constraints limit us to performing numerical simulations on small-scale 2-dimensional models (Figure 3a) instead of models on the order of tens of kilometers and in 3-dimensions. Ideally, because subduction zone structures are 3-dimensional, one should be simulating continental crust deformation using plate buckling (3D)^{12,13}, instead of column buckling (2D) to accurately explain 3D deformation and local buckling. Also, to perform a more complicated quantitative analysis, one

will have to perform simulations at the true scale, use a 3D heterogeneous viscoelastic earth model, and impose accurate stresses and precise boundary conditions. Nonetheless, the findings are equally applicable to the same geometry at large scales, especially for qualitative analysis of deformation.

For the wedge material, we use plain carbon steel having a modulus of elasticity of 200 GPa. The landward edge of the wedge is assumed to be immovable (Figure 3a) (zero displacement). In the locked zone, only sliding along the interface is allowed with the interface-normal displacement set to zero. All other surfaces are free boundaries. Both shear stress \mathbf{F} and pore-pressure \mathbf{P} are set at 1 GPa for the static deformation (in the subsequent section, we also perform simulations in the absence of any pore-pressure to analyze its role).

It is clear from Figure 3, that the wedge buckles under the forces and boundary conditions imposed on it.

The horizontal displacement (Figure 3b) is maximum at the seaward edge and decreases monotonically away from it. Vertical displacement, shown in Figure 3c, is significantly large in the middle between the locked zone and the fixed landward edge. Below, in section 3, we show how the horizontal and vertical GPS measurements in Cascadia and Alaska closely correspond to the surficial displacement patterns seen in Figures 3b and 3c.

To decipher the effect of the wedge geometry on buckling, we perform numerical simulation of the buckling process of on a range of wedge geometries similar to the one shown in Figure 3a. The forces and boundary conditions are the same as shown in Figure 3a, with the only difference being in the geometry. For a wedge geometry, we redefine the slenderness ratio to be the ratio of the length of the wedge to the maximum thickness, which is also equal to the inverse of the slope of the plate interface in subduction zones. For example, the slenderness ratio of the wedge in Figure 3a is $10/2 = 5$.

We perform numerical buckling simulation of wedges for a range of slenderness ratios in Solidworks¹⁸ with and without pore-pressure \mathbf{P} and compute the critical stress for each scenario. The results (Figure 4) show that critical load and slenderness ratio have an inverse nonlinear relation between them and this relation is quite similar to the classical Euler's critical load relation for beams¹²⁻¹⁴. The above numerical analysis confirms that wedges subject to forces and boundary conditions akin to those encountered at subduction zones will experience buckling.

2.3 Field Data

Although the trends of curves in Figures 1 and 4 are similar, they are not amenable to a direct comparison unless we can compute the slenderness ratios of continental wedges, and more importantly establish a relation between inter-tremor time interval and critical stress.

Slenderness ratio of an overriding continental crust is equal to the multiplicative inverse of the slope of the plate interface, and is therefore quite straightforward to compute from imaging studies carried out at different subduction zones.

Estimation of critical stress, however, is much more challenging. Therefore, we resort to an indirect measure of the critical load for continental wedges around the world. Tremors (and so-called slow slip events) display a wide range of periodicity in the Nankai and Hikurangi subduction zones^{4,10,19} – with the seismicity characteristics clearly correlated to the depth of the seismicity¹⁰. A thinner crust is more easily buckled than a thicker one – it will take lesser time and lesser force to buckle; at the same time, the thinner crust can accommodate a lesser degree of strain energy than a thicker one. In sections 3 and 4.2 below, we show that buckling of the continental plate (and its subsequent collapse) happen periodically. Hence, a thinner crust will undergo more cycles of buckling (and collapse) than a thicker one within the same time period, all the while releasing lesser seismic energy in each cycle. In other words, the inter-tremor time interval for thinner crusts (high slenderness ratio) will be smaller than for thick crusts (low slenderness ratio). If we assume that all continental wedges experience the same stress rate, then the critical stress should be approximately directly proportional to the inter-tremor time interval (because stress equals the product of stress rate and time). *Therefore, we use inter-tremor time interval as a proxy for critical stress.*

Under the light of the above argument and given the close correspondence between the curves in Figures 1 and 4, *we conclude that forces and boundary conditions prevalent at subduction zones result in buckling of the overriding continental plate.*

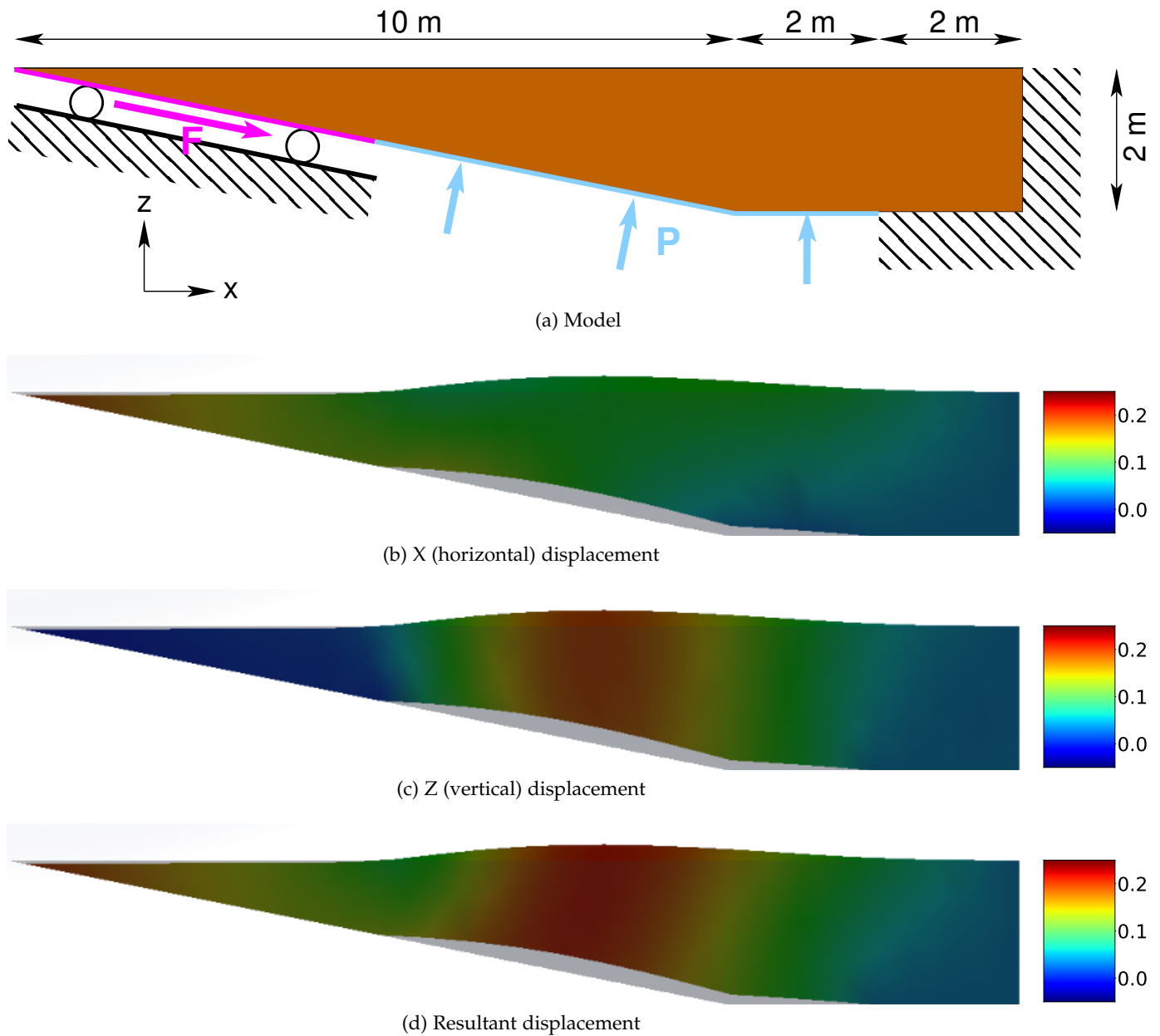


Fig. 3: (a) **Wedge-model (akin to the overriding continental wedge) used in simulation of static deformation.** **F** corresponds to the shear stress applied by the subducting slab at the locked zone (magenta line). **P** represents the normal stress exerted by the near-lithostatic pore-fluid pressure. Only sliding (displacement along the plate interface) is allowed in the locked zone, while the landward edge remains fixed. All other surfaces have free boundary conditions. **Horizontal (b), vertical (c), and net (d) displacements (in meters) superimposed on the deformed wedge resulting from the forces and boundary conditions in (a).** The undeformed shape, in the form of a transparent body, is also superimposed. The colormap for the displacements ranges from -0.05 m to 0.25 m.

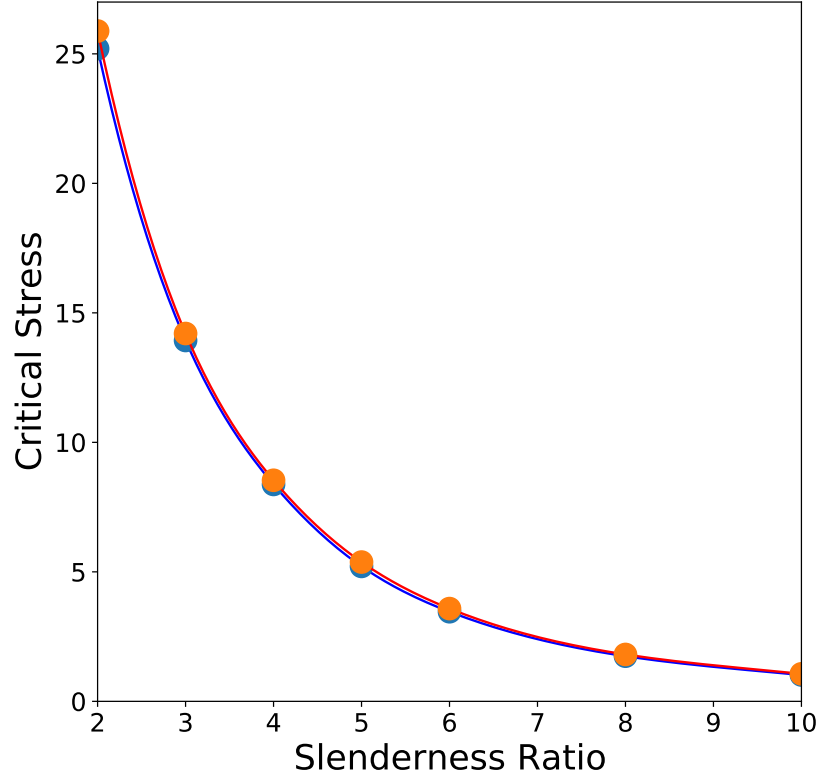


Fig. 4: Critical stress (in GPa) as a function of slenderness ratio for a wedge experiencing force **F** and boundary conditions shown in Figure 3a in the presence (blue line) and absence (orange line) of pore-fluid pressure **P**. The dots represent values computed numerically for a range on geometries and the lines are obtained using interpolation through these points. Note the similarity with the trend in Figure 1.

One might argue that static friction might explain the observation in Figure 1. However, assuming a constant coefficient of friction across all plate interfaces and a similar continental crust thickness in all subduction zones, static friction will result in a positive correlation between inter-tremor time interval and the slenderness ratio. That is because, with increasing slenderness ratio (which corresponds to decreasing dip of the plate interface), the normal force on the plate interface increases, thereby increasing the frictional force – which would translate to an approximately linearly increasing inter-tremor interval time with increasing slenderness ratio. However, we observe the opposite relationship in subduction zones as shown in Figure 1), which rules out friction as an explanation for this phenomenon.

Also, it is also clear from Figure 4 that the effect of the pore-fluid pressure on the buckling propensity is low and the primary force controlling the buckling process is the shear stress applied by the subducting slab in the locked zone.

Note that subduction zone geometries and rheological properties are complicated, vary spatially, and evolve with time, which explains the scatter and presence of outliers in Figure 1. The slenderness ratio used in Figure 1 for any region is computed by averaging the values along dip as well as strike. Imaging studies show that there may be significant variability in the slope of a plate interface. Also, in addition to the subduction rate, the inter-tremor time interval is influenced by other factors, the most important of which include 3D geometry of the overriding plate, modulus of elasticity of the overriding plate, and heterogeneities therein. Prime examples of such complicated subduction zones include Alaska and Japan which exhibit a range of inter-tremor time intervals.

3 SPATIO-TEMPORAL SURFACE DEFORMATION IN CASCADIA AND ALASKA

If buckling of the overriding continental crust is indeed occurring, one should be able to observe it on surface displacement data. To ascertain this, we analyze all three components of GPS recording (two

horizontal and one vertical) in Cascadia and Alaska to study the 3D deformation of the continental crust as a function of space.

Equally importantly, buckling of continental crusts should have a temporal signature. In other words, a structure undergoing buckling should demonstrate vertical and horizontal displacements that are a function of time. Buckling, however, cannot go on forever. If the strain rate remains constant, the structure will experience plastic deformation. On the other hand, if the stresses are reduced or eliminated, the structure will revert to its original state as the initial buckling is elastic.

Although we observe the overriding plate in subduction zones is buckling, we do not see any large-scale permanent folding structures that would point to plastic deformation. Moreover, as mentioned above, the average compressive stress exerted by spreading ridges is approximately 25 MPa¹⁵ and the average yield strength of continental lithosphere is close to 400 MPa^{16,17}, which implies that one should expect buckling to be the predominant deformation mechanism (instead of plastic or brittle behavior) of the overriding continental wedge. *Therefore, it is reasonable to conclude that the stresses causing buckling of continental plates are getting reduced or eliminated at certain times – resulting in a collapse of the continental plate.*

Below, we show that geodetic observations previously interpreted as slow slip, are in fact a surface manifestation of the buckling of the overriding continental crust and its subsequent rapid collapse on top of the subducting oceanic slab. We also demonstrate that the buckling and collapse of the overriding plate occurs periodically at subduction zones.

3.1 Displacements due to Buckling and Collapse

As argued above, buckling of the overriding plate in subduction zones is followed by a collapse phase. Figure 5 shows a schematic of the expected temporal evolution of vertical (blue) and horizontal (red) displacements of four locations A, B, C, and D, (Figure 2) on the surface of a continental plate through a single buckling and collapse cycle. Spatial displacement patterns in Figure 5 are made to be consistent with the numerical static modeling results shown in Figure 3. The magnitude of the horizontal displacement is expected to decrease monotonically from the corner of the accretionary wedge (location A) landward as depicted by the decreasing range of the horizontal displacement moving from A through D. The vertical displacement, however, is small at location A, attains a maximum at location C, and tapers off to a small value further landwards (location D).

An efficient technique to analyze and quantify such multi-component data is to generate hodograms which are a display of the motion of a point as a function of time. Figure 5 shows the hodograms for each of the four locations A, B, C, and D on the right. The path followed by a particle during the buckling phase is different from that followed during the collapse phase, thereby resulting in hysteresis of the particle motion. Note that such hysteresis demonstrates a non-linear particle motion (Figure 5) as opposed to an linear motion (with near-zero vertical displacement) expected for the case of slow slip. Moreover, it is clear from the hodograms that the horizontal displacement decreases monotonically from the corner of the accretionary wedge (location A) landward, while the vertical displacement attains a maximum somewhere between the locked zone and the backarc.

The tilt of the major-axis of the hodogram with respect to the vertical is also characteristic of buckling-induced displacements. The hodogram major-axis in the vicinity of the seaward-edge of the overriding plate (location A) is close to horizontal (tilt of 90°). The tilt at location C, on the other hand, is close to 0°. In between locations A and C, the tilt is expected to systematically change from 90° at A to 0° at C. Because of the absence of geodetic measurements in the seaward wedge of the overriding plate, however, we expect to see tilts corresponding only to locations B, C, and D.

Figure 6 shows an example of a hodogram obtained from GPS data. This data comes from the Albert Head GPS site on Vancouver Island in Victoria, British Columbia – the data for which was originally employed by Rogers and Dragert²⁰ to hypothesize the process of slow slip. Note the hysteresis and the prominent vertical displacement observed at this site which is quite similar to the pattern expected for surface location C (Figure 5). Below, in Section 4.2, we hypothesize that location C lies right above the tremor zone.

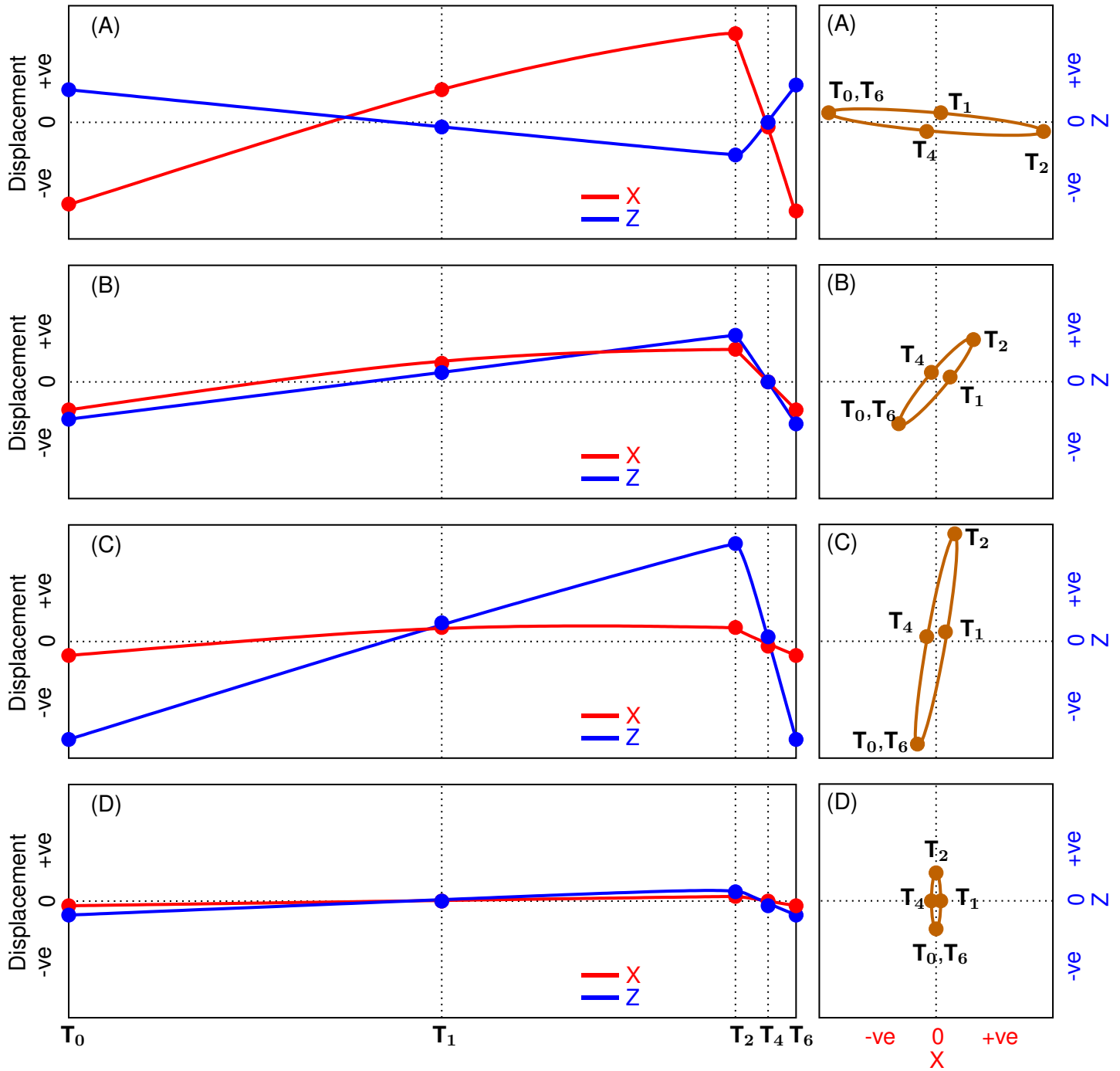
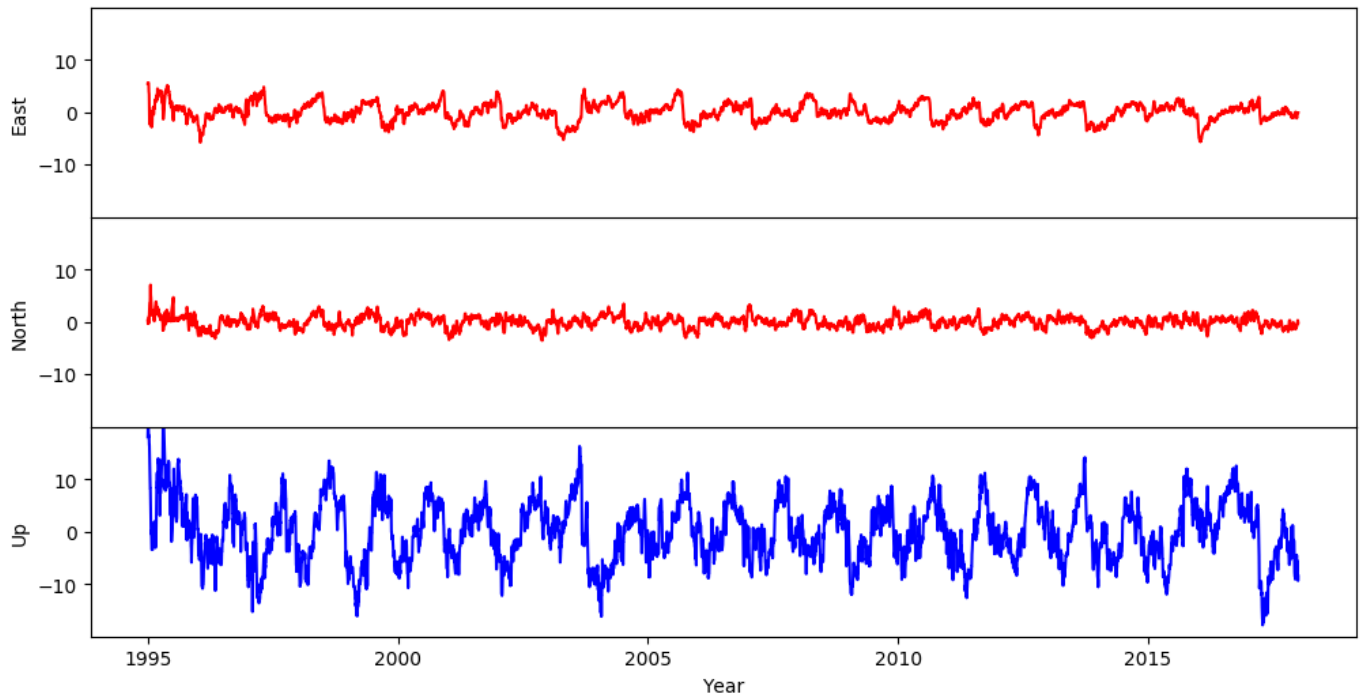
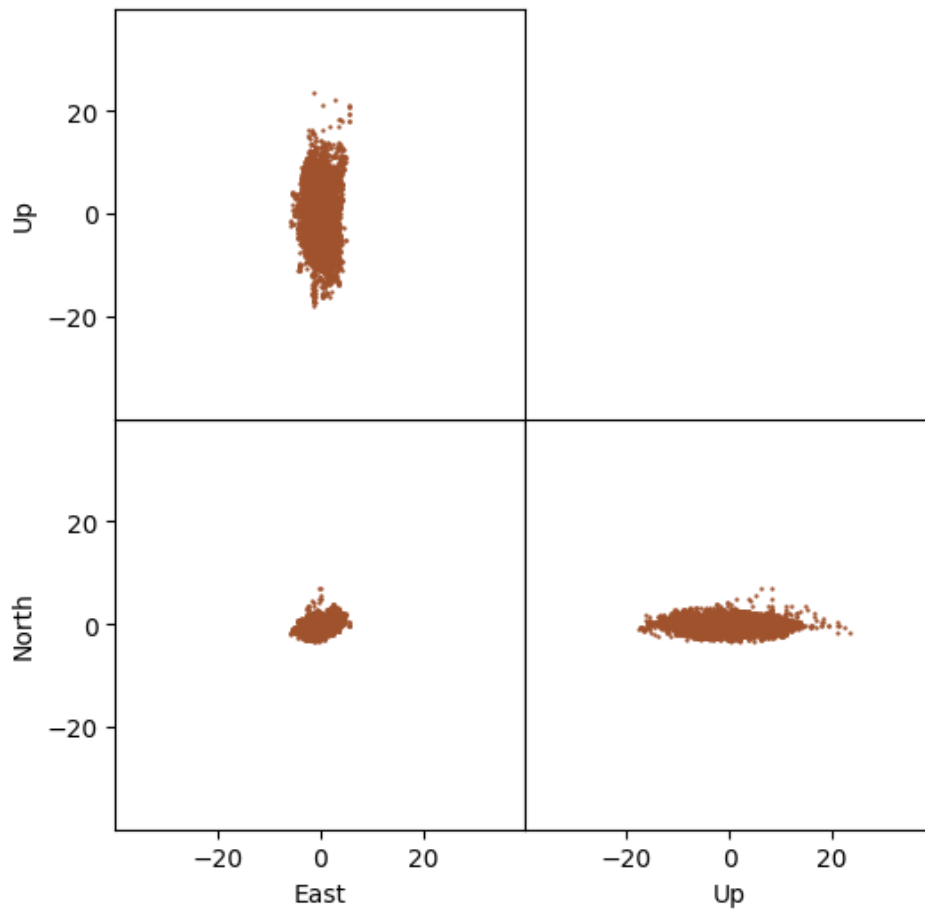


Fig. 5: Schematic time-dependent detrended displacements (left column) and corresponding hodograms (right column) of points A through D (Figure 2) during a single cycle of Episodic Buckling and Collapse. Horizontal displacement X is shown in red and vertical displacement Z in blue. The different phases of the subduction cycle are also denoted.



(a) GPS



(b) Hodogram

Fig. 6: East, North, and vertical components of GPS data and corresponding hodogram from the Albert Head GPS site on Vancouver Island in Victoria, British Columbia and corresponding hodogram on the right. All data have been detrended and filtered. The hodogram is displayed in the form of projections on the three orthogonal planes.

3.2 Vertical GPS Measurements

Uncertainty in vertical GPS measurements is approximately 3 times that of horizontal measurements. More importantly, we recognize that seasonal variations in surface mass variations can have substantial impact on vertical GPS measurements^{21–23}.

Here, however, we ignore the effect of seasonal changes on vertical GPS measurements because it is extremely challenging to decouple the effect of seasonal surficial mass changes from displacement due to tectonic deformation. This task become especially challenging in Cascadia where the episodic deformation cycle, spanning 13–14 months, is close to the seasonal cycle (12 months).

In some cases seasonal effects can be reliably accounted for using GRACE-based models²⁴. GRACE-based models, however, are still not error-proof because if there is tectonic-related uplifting/collapse, there will be related gravity perturbations that will be contained in GRACE measurements (and superimposed on seasonal changes).

Still, other studies^{10,25–28} have clearly shown the close correspondence between the patterns seen on vertical displacements with horizontal measurements. More recently, Klein et al.⁹ clearly show slow slip events on horizontal and vertical GPS measurements in Chile and further show that only tectonic processes (and not instrumental, hydrologic, oceanic, or atmospheric loading processes) could be generating such transient signals.

3.3 Data Processing

Prior to hodogram analysis, we detrend GPS data using a 1001 point median filter to eliminate long-term trends, and thereafter de-noise it using a 11-point median filter to suppress short-term noise bursts. GPS stations with significant noise that could not be corrected from using the above filtering operations are not used in the analysis.

Computation of the net vertical and horizontal GPS displacements is done by fitting ellipsoids to the hodograms. Projection of the major axis of the ellipse on the vertical direction and the horizontal plane yields the net vertical and horizontal displacements, respectively.

3.4 3D Displacements in Alaska and Cascadia

We generate hodograms for all the GPS measurements at sites in the Cascadia subduction zone and in Alaska and thereafter compute the vertical displacement, horizontal displacement, their ratio, and the hodogram tilt. These attributes for Alaska and Cascadia are shown in Figures 7 and 8, respectively. Note that in both cases, the horizontal displacement decreases monotonically from the margin landwards; while the vertical displacement increases as one moves landwards from the margin, attains a maximum, and decreases thereafter. The above deformation trends closely correspond to those seen in numerical simulation of deformation seen in Section 2.2 and analyzed above in Figure 5.

The belt of maximum vertical displacements along the Cascadia margin has a close correspondence to the tremor maps generated by Wech et al.², Wells et al.²⁹. Similarly, the maximum vertical displacements in Alaska encompass the tremor activity mapped by Ohta et al.³⁰ and Peterson and Christensen³¹ (in addition to showing locations where additional tremor activity could be expected).

The tilt of the hodogram major-axis (Figures 7d and 8d) shows a trend that is consistent with what one would expect to observe for buckling (Figures 5b, 5d, 5f, and 5h). The trend is especially prominent for Alaska, where the tilts show values as high as 30° close to the coastline and systematically decrease as one moves inland, attaining values close to 0° over the tremor zones.

With regards to vertical GPS measurements, we observe that

- their amplitudes can be large and in many cases an order of magnitude larger than horizontal displacements,
- there is a close correspondence between sudden changes in horizontal displacements (horizontal GPS reversals) and rapid vertical GPS measurements on numerous occasions, and
- vertical displacement patterns (Figure 7 and 8) show close spatial correspondence with spatial tremor patterns in Cascadia and Alaska.

Given the above observations, we conclude that the observed vertical displacements contain significant imprints of tectonic deformation from buckling and collapse.

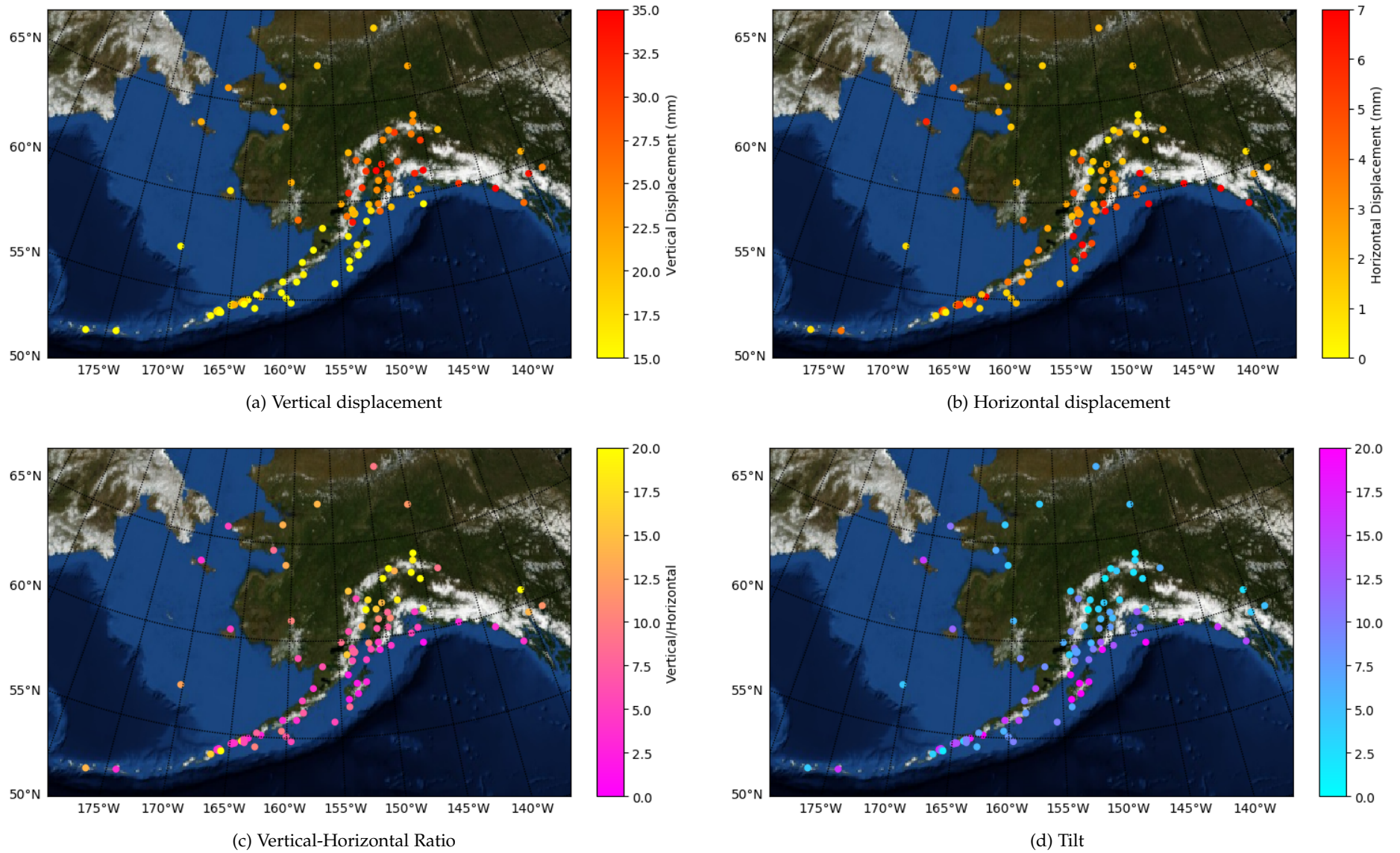


Fig. 7: **Measures of surface deformation in Alaska.** **a**, Net vertical displacement and **b**, net horizontal displacement computed from GPS measurements, **c**, their ratio, and **d**, hodogram tilt (in degrees) from the vertical. All color scales have been truncated to expose the trends.

4 EPISODIC BUCKLING AND COLLAPSE

Based on the novel observations presented above, combined with the numerical modeling of deformation, and spatio-temporal analysis of GPS in Cascadia and Alaska, we introduce an Episodic Buckling and Collapse model of the subduction zone, whereby periodic seismic activity (tectonic tremor) and geodetic changes, result from the episodic buckling of the overriding continental crust and its rapid collapse on the subducting oceanic slab.

However, it is not sufficient that the proposed model fits only the new observations and analysis presented above; the model should also be able to clearly explain the numerous observations and findings already published. Until now, all these observations have been explained in the light of the Slow Slip hypothesis.

4.1 Published Observations and Findings

Table 1 summarizes various geodetic observations, seismological studies, imaging research, and geologic findings, all of which should provide constraints for any model of the subduction zone. Therefore, below we list all these scientific findings and also discuss how they fit into the Slow Slip hypothesis. Thereafter, in section 4.2, we use these observations in conjunction with the observations presented above to develop the Episodic Buckling and Collapse model and explain how other scientific findings are reasonably explained by it.

4.1.1 Geodetic Observations

In addition to the reversals in horizontal GPS recordings, similar and more prominent reversals are observed on the vertical GPS component^{11,25–27}. Magnitude of the vertical displacements cannot be satisfactorily explained by the Slow-Slip hypothesis as it assumes only relative sliding between the subducting slab and the overriding plate.

Tiltmeter recordings^{34–36} show significant bulging of the surface prior to slow slip and subsequent contraction coinciding with slow slip. Although temporal changes in tiltmeter recordings can be reasonably explained by the Slow-Slip hypothesis, accounting for the spatial changes through slow slip is more challenging.

4.1.2 Fluids and the Low-Velocity Zone

Numerous studies^{37–39,41,43} clearly demonstrate the presence of fluids at the plate interface characterized by a seismic Low-Velocity Zone (LVZ). It is widely believed that slab dehydration generates aqueous fluids which then travel upward because of buoyancy forces and accumulate at the plate interface and mantle wedge. Seismologists believe that these fluids lubricate the plate interface, thereby aiding slow slip and aseismic slip.

In Cascadia, evidence of fluids come from the work of Audet et al.³⁹ who employ teleseismic data to show the presence of a zone with anomalously high Poisson's ratio extending from the margin all the way to the corner of the mantle wedge. Presence of fluids in the tremor region in Shikoku is evident from the tomographically-derived low velocities by Shelly et al.⁴⁹ and Matsubara et al.³⁸.

Other studies show that the plate interface is overpressured^{39,43}. Bell et al.⁴¹, Rubinstein et al.⁴⁴ find extremely low effective normal stresses in subduction zones. Excepting buoyancy recharging the plate boundary with hydrous magmatic fluids, the Slow-Slip model provides little explanation of the cause of overpressure and their periodic nature.

Recent findings by Nakajima and Uchida⁴⁵ shed new light on the movement of fluids at the plate boundary. They analyze seismic data spanning more than a decade over Japan and demonstrate that "seismicity rates and seismic attenuation above the megathrust of the Philippine Sea slab change cyclically in response to accelerated slow slip." They interpret these findings to represent "intensive drainage during slow slip events that repeat at intervals of approximately one year and subsequent migration of fluids into the permeable overlying plate." Although Nakajima and Uchida⁴⁵ provide an explanation of these observation in the context of the Slow-Slip hypothesis, it is unclear what forces drive the fluids in and out of the plate boundary.

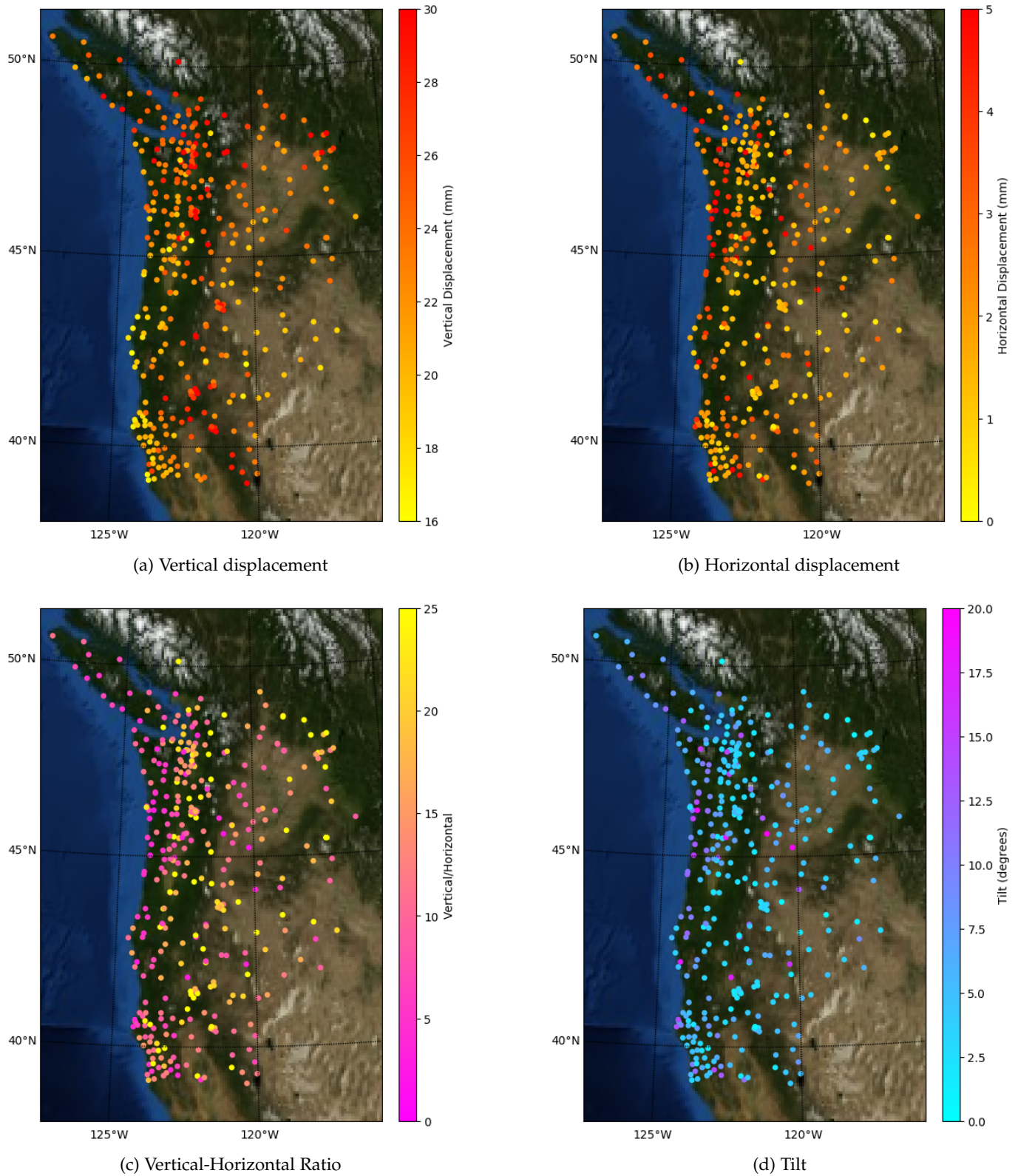


Fig. 8: Measures of surface deformation in Cascadia subduction zone. **a**, Net vertical displacement and **b**, net horizontal displacement computed from GPS measurements, **c**, their ratio, and **d**, hodogram tilt (in degrees) from the vertical. All color scales have been truncated to expose the trends.

Observations	References
GPS Horizontal	Hirose et al. ³² , Dragert et al. ³³
GPS Vertical	Behura et al. ¹¹ , Fu and Freymueller ²⁴ , Douglas ²⁵ , Miyazaki et al. ²⁶ , Heki and Kataoka ²⁷ , Liu et al. ²⁸
Tiltmeter recordings	Obara et al. ³⁴ , Hirose and Obara ^{35,36}
Presence of fluids in LVZ	Eberhart-Phillips et al. ³⁷ , Matsubara et al. ³⁸ , Audet et al. ³⁹ , Kim et al. ⁴⁰ , Bell et al. ⁴¹ , Hansen et al. ⁴² , Toya et al. ⁴³
Large fluid pressure in LVZ	Audet et al. ³⁹ , Kim et al. ⁴⁰ , Toya et al. ⁴³
Low effective stress	Bell et al. ⁴¹ , Rubinstein et al. ⁴⁴
Episodic fluid drainage	Nakajima and Uchida ⁴⁵
LFEs and VLFs	Liu et al. ²⁸ , Frank and Brodsky ⁴⁶
Thick LVZ	Hansen et al. ⁴² , Toya et al. ⁴³ , Audet and Schaeffer ⁴⁷
LVZ Geometry and their up-dip & down-dip extents	Matsubara et al. ³⁸ , Hansen et al. ⁴² , Toya et al. ⁴³ , Audet and Schaeffer ⁴⁷
Occurrence of tremors	Obara ⁴⁸
Tremor source mechanism	Shelly et al. ⁴⁹ , Wech and Creager ⁵⁰ , Bostock et al. ⁵¹ , Ohta et al. ⁵²
Spatial extent of tremors	Kao et al. ¹ , Wech et al. ² , Matsubara et al. ³⁸ , Audet and Schaeffer ⁴⁷ , Audet et al. ⁵³
Tremor migration patterns	Kao et al. ¹ , Wech et al. ² , Shelly et al. ⁵⁴ , Ghosh et al. ⁵⁵ , Boyarko and Brudzinski ⁵⁶ , Obara et al. ^{57,58}
Absence of tremors on old crusts	Schwartz and Rokosky ¹⁹
Variable tremor and slow slip periodicity	Wallace and Beavan ¹⁰
Tremors located down-dip of LVZ	Peterson and Christensen ³¹ , Audet and Schaeffer ⁴⁷
Crustal seismicity	Shelly et al. ⁴⁹ , Bostock et al. ⁵¹ , Nicholson et al. ⁵⁹
Mantle helium correlation with tremor location	Umeda et al. ⁶⁰ , Sano et al. ⁶¹
Paleo-uplift and subsidence	Dragert et al. ⁶² , Sherrod ⁶³ , Leonard et al. ⁶⁴ , Shennan and Hamilton ⁶⁵

TABLE 1: List of observations and results used in and explained by constructing the Episodic Buckling and Collapse model of subduction zones.

The spatial extent and geometry of the LVZ are clear from the work of Hansen et al.⁴², Toya et al.⁴³, Audet and Schaeffer⁴⁷. Toya et al.⁴³, Audet and Schaeffer⁴⁷ report a thick LVZ with thicknesses averaging a few kilometers in the Cascadia Subduction Zone. All of them also report the thickening of the LVZ with increasing depth. It is unclear how such a thick ductile zone could be generating tremor. Audet and Schaeffer⁴⁷ also note that the LVZ does not extend into the locked zone; and on the down-dip side, it truncates at the mantle wedge. They conclude that the nature of the LVZ remains ambiguous and provide a couple of hypothesis explaining the increasing thickness of the LVZ with depth. These hypothesis, however, do not provide a definitive explanation of the periodic nature of slow slip.

4.1.3 Tremor

Since the first reporting by Obara⁴⁸, tremor in subduction zones has been widely observed all over the world. Several researchers have reported that tremor has a dominant thrust-type focal mechanism⁴⁹⁻⁵¹, thereby providing a significant boost to the proponents of the Slow-Slip hypothesis. According to the Slow-slip hypothesis, as the subducting slab slides underneath the continental crust during slow slip, it generates tremor with predominant thrust-type focal mechanism.

Tectonic tremors are usually located in a narrow spatial interval oriented in a strike-parallel direction^{1,2,47,53,66}. The down-dip boundary is close to the mantle wedge, while the up-dip boundary extends a few kilometers from the mantle wedge. In southwestern Japan, Matsubara et al.³⁸ observe that, “These tremors occur at the landward edge of the high- V_P/V_S zone only beneath the southern Kii peninsula. The common point of the tremors for these four regions is that the tremors are distributed in places where the Philippine Sea plate first contacts with the serpentinized wedge mantle of the Eurasian plate.” In the light of the Slow-Slip model, multiple explanations of their depth extent have been proposed, all of them revolving around variations in slip properties of the plate boundary due to temperature and pressure changes.

Multiple studies^{31,47} image the tremor swath to the down-dip side of the LVZ. Audet and Schaeffer⁴⁷ interpret these observations as reflective of transitions in plate coupling and slip modes along the dip. If such transitions are indeed present, the processes that result in such changes along the plate boundary are open to question.

Tremors exhibit peculiar migration characteristics. Wech et al.², Obara et al.⁵⁷ observe up-dip and radial tremor migration. Obara et al.^{58,66} show a bimodal distribution of tremors in the Nankai subduction zone, with tremors from the along-strike migration concentrated on the up-dip side, while tremors from up-dip migration distributed over the entire tremor zone. Other studies^{58,67} report rapid reverse tremor migration where tremors migrate in the opposite direction of along-strike migration at much faster speeds. It is unclear from the Slow-Slip hypothesis as to what physical phenomena might result in such migration patterns.

Schwartz and Rokosky¹⁹ find no evidence of slow slip and tremors in northeast Japan which has a thick old crust, while younger and thinner crusts in the Nankai subduction zone exhibit an array of slow slip events with varying periodicity. Wallace and Beavan¹⁰ report an interesting correlation between temporal characteristics of slow slip events and their depth of occurrence in the Hikurangi subduction margin of New Zealand. They note that the longest duration, and largest slow slip events occur at large depths, while the shortest duration, smallest, and most frequent slow slip events are usually shallow. Although the degree of plate coupling¹⁰ can explain some of these observations, it is unclear how plate coupling can explain the variable periodicity and duration of the slow slip events.

4.1.4 Crustal Seismicity

Significant crustal seismicity is observed in Cascadia^{51,59,68} and Nankai⁴⁹ subduction zones. A majority of the reported crustal seismicity is located at shallow depths and a few kilometers above the tremor zone and further landward. The Slow-Slip hypothesis does not provide a satisfactory explanation either of the origin of such seismicity or for the spatial correspondence between shallow crustal seismicity and deep tremor.

4.1.5 Mantle Helium

Sano et al.⁶¹ report interesting findings and suggest the existence of fluid pathways from the mantle to the trench in the Nankai subduction zone. They note, “a sharp increase in mantle-derived helium in bottom seawater near the rupture zone 1 month after the earthquake. The timing and location indicate that fluids were released from the mantle on the seafloor along the plate interface. The movement of the fluids was rapid, with a velocity of ≈ 4 km per day and an uncertainty factor of four. This rate is much faster than what would be expected from pressure-gradient propagation, suggesting that over-pressurized fluid is discharged along the plate interface.” It is debatable as to what forces mantle fluids to squirt out in the vicinity of the rupture zone during megathrust earthquakes.

Furthermore, Umeda et al.⁶⁰ observe a close spatial correspondence between mantle helium and tremors. They report a high flux of mantle helium over regions experiencing tremors and a low flux in areas adjacent to those lacking tremors. Reconciling these observations with slow slip had proved to be challenging.

4.1.6 Paleo-Uplift and Subsidence

Evidence of large-scale and periodic continental deformation can be found in geologic records. Sherrod⁶³ find evidence of abrupt sea level changes and rapid submergence in Puget Sound, Washington State. They

estimate a maximum subsidence of approximately 3 m. Leonard et al.⁶⁴ report a maximum subsidence of 2 m during the 1700 great Cascadia earthquake. In Alaska, Shennan and Hamilton⁶⁵, Hamilton and Shennan⁶⁹, Hamilton et al.⁷⁰ report rapid subsidence measuring 2 m. It is unclear from the Slow-Slip model as to how the crust can experience an uplift in excess of 2 m over a period of 500 years.

4.2 The Model

The Slow-Slip hypothesis depicts a plate interface that is frictionally locked at shallow depths and transitions into a slow-slip zone down-dip. Below this transition zone, geoscientists believe that the subducting slab slides continuously at a steady rate consistent with plate motion. *The key assumption in these models is that the overriding continental plate is in physical contact with the subducting oceanic slab all along the plate interface.*

The Episodic Buckling and Collapse model, on the other hand, is based on the hypothesis of a buckling overriding plate that detaches itself down-dip from the subducting slab, while being in contact in the locked seismogenic zone. According to this model, the observed low-velocity zone (LVZ) is neither a part of the continental crust nor the subducting slab. Instead, it is a fluid-filled chamber created between the two plates because of the buckling of the overriding continental plate. An interplay of plate deformation, pressure differentials, and pressure release control the fluid flow in and out of this chamber and also generate seismicity in the form of tectonic tremor, low-frequency, and very-low-frequency energy releases.

Below, we describe the various temporal phases of the short-term buckling and collapse process within each cycle and the multiple physical phenomena occurring within each of the phases. Later we introduce long-term buckling and collapse cycles that are related to megathrust cycles. Section 5 dwelves further into this hypothesis and provides a potential link between Episodic Buckling and Collapse and megathrust earthquakes.

4.2.1 Phase T_0

Because only the seaward edge of the plate interface (accretionary wedge and seismogenic zone) is 'locked' while the rest of the interface can slide, the overriding plate will buckle under the forces of the subduction process. Given the slowly developing subduction processes, the system will exhibit Euler's fundamental model of buckling – with the locked portion of the continental plate acting as one fixed end and the thick continental crust further inland serving as the other fixed end of the buckling system. Figure 9 shows a schematic of the buckling and collapse process occurring in subduction zones. Phase T_0 corresponds to a state within the buckling cycle where the tectonic stresses on the overriding continental plate are minimal (phase T_0 , Figure 9). A magmatic-fluid-filled chamber exists between the overriding plate and the subducting slab.

4.2.2 Phase T_1

As the oceanic slab subducts, compressive stresses build up within the overriding plate, thereby pushing it upward and landward (phase T_1 , Figure 9). The overriding plate starts buckling further to accommodate the additional strain, wherein the deep continental crust overlying the transition zone and the mantle wedge buckles away from the subducting slab and possibly the mantle.

Fluid Flow – The above deformation enlarges the size of the fluid-filled chamber and drives down the pore-pressure inside it, which in turn results in upwelling of magmatic fluids from the wedge region towards the chamber (Figure 10a). This process is slow and occurs for majority of the cycle. For example, in Cascadia, phase T_1 continues for majority of the 14 months. Because this phase evolves slowly, pressure equilibrium is maintained throughout the phase as progressive buckling is accompanied by steady fluid upwelling.

Low Effective Stress – We expect the effective stress of the system to be close to zero and any small stress perturbations may lead to escape of fluids through faults, fractures, fissures (and potentially magma vents), and also result in minor collapse of the overriding plate thereby generating tremor. Evidence of low effective normal stress comes from observations that tremors may not only be triggered by earthquakes^{44,71–73} but also, more interestingly, by tides^{54,74,75}.

Surface bulging due to buckling is consistent with the tiltmeter measurements (phases T_2 , T_3 , and T_4 , Figure 9) as reported by Obara et al.³⁴, Hirose and Obara³⁵ who observe that the surface is dome shaped during tremor episodes. It would be interesting to study and quantify the temporal evolution in spatial patterns of tiltmeter measurements.

4.2.3 Phase T_2

Progressive buckling will result in continual opening of faults and fractures, with the openings starting at shallow depths and progressing downwards. At a certain critical state, right before the fracture and fault openings reach the fluid-filled chamber, buckling exhibits the maximal horizontal and vertical displacements of the overriding plate (phase T_2 , Figure 9) within each cycle.

Phase T_2 also corresponds to the maximal extensional stress on the top of the overriding plate and the maximal volume of the fluid chamber within each cycle. The structure of the fluid chamber would be similar to what has been observed by Hansen et al.⁴², Toya et al.⁴³, Audet and Schaeffer⁴⁷ – thickening of the LVZ with increasing depth. Our model suggests that the LVZ extends into the continental Moho and truncates to the landward-side of the mantle wedge. The weak continental Moho reflectivity observed in the Cascadia subduction zone by Haney et al.⁷⁶ is evidence of the LVZ extending landward into the continental Moho. Detailed imaging studies are needed to establish the precise landward-extent of this fluid chamber.

The time between Phases T_0 and T_2 corresponds to gradual buckling and slow upwelling of fluids. Such gradual deformations and steady fluid flow do not emanate any seismic energy in the vicinity of the plate boundary. However, the continual buckling and bulging of the overriding continental plate result in opening of strike-parallel and transverse faults resulting in significant crustal seismicity as observed by Shelly et al.⁴⁹, Bostock et al.⁵¹, Nicholson et al.⁵⁹. The shallow crust is expected to house a majority of this seismicity because it experiences the maximum strain.

4.2.4 Phase T_3

Fluid Chamber Collapse – As soon as the fault and fracture openings reach the fluid-filled chamber, the magmatic fluid escapes into the overriding plate (most likely accompanied by phase change from liquid to gaseous) and consequently drops the pressure inside the chamber dramatically (Figure 10b).

As a result, the chamber starts collapsing as illustrated in phase T_3 of Figure 9. The rapid reversal observed in horizontal GPS measurements is a result of the collapse-related seaward horizontal displacement and not from so-called slow slip. As shown below and as expected, changes in vertical displacement are even more substantial.

Wells et al.²⁹ demonstrate substantial evidence of regional faults extending to the plate interface. The distribution of mantle helium in eastern Kyushu by Umeda et al.⁶⁰ is consistent with the above picture. Umeda et al.⁶⁰ observe a close correspondence of mantle helium (in hot springs) with the occurrence of tremor – the flux of mantle helium is low in areas lacking tremors, while it is high above regions experiencing tremors.

Fluid Flow – The rapid collapse of the continental plate will dramatically increase the fluid pressure inside the chamber, which in turn will push the fluid up-dip, down-dip, and along-strike (phases T_3 , and T_4 , Figures 9 and 10).

Also, there is a distinct possibility that the high fluid pressure fluids breaks flow barriers within conduits and asperities housed in the locked zone and the accretionary prism, leading to the up-dip escape of some magmatic fluids along the locked zone through the accretionary prism (Figure 10b). The collapsing continental plate will also push fluids along-strike at the plate boundary as shown below in phase T_4 .

VLFEs – We hypothesize that the so-called shallow very-low-frequency earthquakes (VLFEs) observed in accretionary prisms result from the rapid flow of magmatic-fluid brought about by the collapsing continental crust.

Multiple researchers have reported the close spatial and temporal correspondence of shallow very-low-frequency earthquakes (VLFEs) in the accretionary prism with deep tremor and short-term slow slip events. Obara and Ito⁷⁷ report shallow VLFEs on the up-dip side of the locked zone in the Nankai trough. Because the accretionary prism contains out-of-sequence thrusts and fault splays, Obara and Ito⁷⁷

speculate that these fault planes might provide pathways for fluid flow from the subducting slab. More recently, the work of Liu et al.²⁸, Nakano et al.⁷⁸ shows the close temporal association between shallow VLFs in the accretionary prism with deep short-term slow slip events. Liu et al.²⁸ provide clear evidence of the occurrence of VLFs predominantly at the onset of short-term slow slip. They also show that these VLFs have thrust-type focal mechanism. Note that Liu et al.²⁸ assume a moment-tensor source mechanism in their inversions, and not single point forces. However, we believe that the one should use single point forces as the source mechanisms for VLFs, which would yield the direction and intensity of fluid flow.

We do not expect any seismicity at the plate boundary (due to plate motion or fluid flow) during the buckling phase (phases T_0 , and T_1 , Figure 9) but expect different forms of energy release (at multiple locations on the plate boundary) during the collapse phases (phases T_3 , and T_4 , Figure 9) arising from plate striking as well as fluid flow.

Other Explanations for Chamber Collapse – The locked zone experiences substantial stress because of the buckling continental plate. Another possible scenario for the overriding plate collapse could be the minor and temporary decoupling of the locked zone when frictional forces in the locked zone are exceeded. Focal mechanisms of such seismic activity should be close to thrust-type. However, the lack of significant conventional seismicity (high frequency) in the locked zone prior to tremors is a strike against this possibility. Any future discovery of locked-zone conventional seismicity immediately preceding tremor activity will add substantial credibility to this potential scenario.

It is also possible that a combination of the above two processes – fluid flow and locked-zone decoupling, might be occurring. Future research efforts on understanding the dynamic processes at locked zone and the accretionary prism will shed more light on the dominant mechanism.

4.2.5 Phase T_4

Tectonic Tremor Origin – The rapidly collapsing overriding plate strikes the subducting oceanic slab, thereby generating tectonic tremor (phase T_4 of Figure 9 and Figure 11a). Tremor source mechanisms at subduction zones should therefore be predominantly of the Compensated Linear Vector Dipole (CLVD) type, with a possible minor thrusting component arising from the relative plate motion. Researchers have, however, observed a dominant thrust-type focal mechanism for tremor^{49–51}. That being said, in the absence of full-azimuth and wide-angle sampling of a focal sphere, one might mistake a CLVD mechanism as a thrust-type mechanism.

Fluid flow can further complicate the estimation of a source mechanism. Fluid motion, by itself, has a source mechanism of a single point force (and not a moment tensor). Moreover, if the fluid is viscous, the fluid drag against the plate walls will result in a thrust-type and/or normal-fault-type focal mechanism. Because LFEs and tremors usually accompany each other^{49,79}, it is quite likely that all these source mechanisms are superimposed on top of one another, making the inversion and interpretation of tremor source mechanisms challenging.

The atypical lower-boundary geometry of the buckled continental plate explains why tremors truncate at the continental Moho (phase T_4 , Figures 9 and 11a) and are observed lying within a narrow band up-dip along the plate interface phase T_4 , Figures 9 and 11a,^{2,31,47}. Audet et al.⁵³ observe that “the peak occurrence of tremors roughly coincides with the intersection of the plate interface with the overlying continental crust–mantle boundary”.

Fluid Flow – As the overriding continental crust collapses with the lower edge hitting the subducting slab first, some of the fluids are pushed landward along the continental Moho, while most of the fluids are pushed up-dip and along-strike (Figure 9 and 11a). It is likely that as the lower edge hits the subducting slab, it cuts off hydraulic communication between the up-dip fluid chamber and the down-dip mantle wedge, thereby trapping fluid in the chamber. As described above, the collapse also increases the pore-pressure in the chamber, without which the up-dip rate of collapse (parameter that controls tremor migration rate) would be larger than the ones observed by Wech et al.² and Obara et al.⁵⁷ in Cascadia and Japan, respectively. In the latter part of phase T_4 , the lagging end of the high-pressure fluid pocket collapses (creating tremors), thereby pushing the fluid pocket up-dip and parallel to the strike along the plate boundary.

Similar to shallow VLFs, we hypothesize that deep low-frequency earthquakes (LFEs and VLFs), observed by many researchers^{4,46,80–82}, correspond to the rapid sloshing of magmatic fluids brought about by the hastened collapse of the overriding plate. Frank and Brodsky⁴⁶ demonstrate the remarkable spatio-temporal correlation with slow slip events. Also interestingly, they show that the magnitude of the LFE is maximum in the vicinity of the mantle wedge – exactly as predicted by the Episodic Buckling and Collapse model. The up-dip location of deep VLFs with respect to that of tremor indicates that most of the magmatic fluid is pushed up-dip in phases 3 and 4 (Figures 10b and 11a).

4.2.6 Phases T_5 and T_6

Up-dip Tremor Migration – In addition, as supporting frictional forces are overcome, the lower portion of the continental crust wedge strikes the subducting slab first (phase T_4 , Figure 9), followed by a progressive collapse of the continental crust along the up-dip (and radial) direction (phase T_5 , Figures 9 and 11b) – interpreted as up-dip and radial tremor migration in several studies^{2,57}.

Along-strike Tremor Migration – The locked zone prevents the fluid pocket from moving further up-dip and therefore the fluid pocket migrates parallel to the margin of the locked zone as depicted in Figure 11c. In phase T_6 , we believe that the trapped fluids move predominantly along-strike resulting in the observed along-strike tremor migration patterns^{2,57,58}. Fluids are pushed along-strike until they are lost to the overlying permeable crust and/or are pushed down along the plate interface. Because of the progressive loss in fluid-pressure in the latter stages, the rate of along-strike collapse is expected to be lower than the initial up-dip collapse rate – which explains the slower along-strike tremor migration with respect to up-dip migration^{2,57,58,67}. This model also explains the bimodal distribution of tremors in the Nankai subduction zone⁵⁸ with tremors from the along-strike migration concentrated on the up-dip side while tremors from up-dip migration are distributed over the entire tremor zone.

Some studies^{58,67} also report rapid reverse tremor migration where tremors migrate in the opposite direction of along-strike migration at much faster speeds. We postulate that rapid tremor reversal happens when a migrating high-pressure fluid pocket encounters a permeable zone such as a fault or fracture zone, or a magma vent or dike. As fluid escapes through these fissures, the leading edge of the fluid pocket collapses rapidly. This collapse is in the direction opposite to the migrating fluid front and occurs at a much faster rate given the loss of pore pressure in the fluid pocket.

Note that the fluid chamber does not fully collapse within each cycle, instead there is a partial collapse. However, with each passing cycle we expect a net increase in the fluid chamber size from one EBC cycle to the next. Only when the frictional forces in the locked zone are overcome during a megathrust earthquake, does the fluid chamber completely collapse. This fluid-filled chamber is responsible for attenuation of high-frequency portion on the foreshocks as observed by Piña Valdés et al.⁸³ and Piña Valdés et al.⁸⁴.

Further Evidence of Fluid Flow – The periodic changes in seismicity rates and attenuation and their correspondence with accelerated slow slip, as reported by Nakajima and Uchida⁴⁵, corroborates the above model of fluid flow in and out of the fluid chamber. The ‘breathing’ mechanism of magmatic fluid flow driven by periodic plate deformation in subduction zones might be the dominant mechanism (and not buoyancy) of magma transport from the upper mantle to the crust and might even be responsible for the creation of the Aleutian Volcanic Arc in Alaska and its volcanism as evident from the focusing of partial melt under the arc.

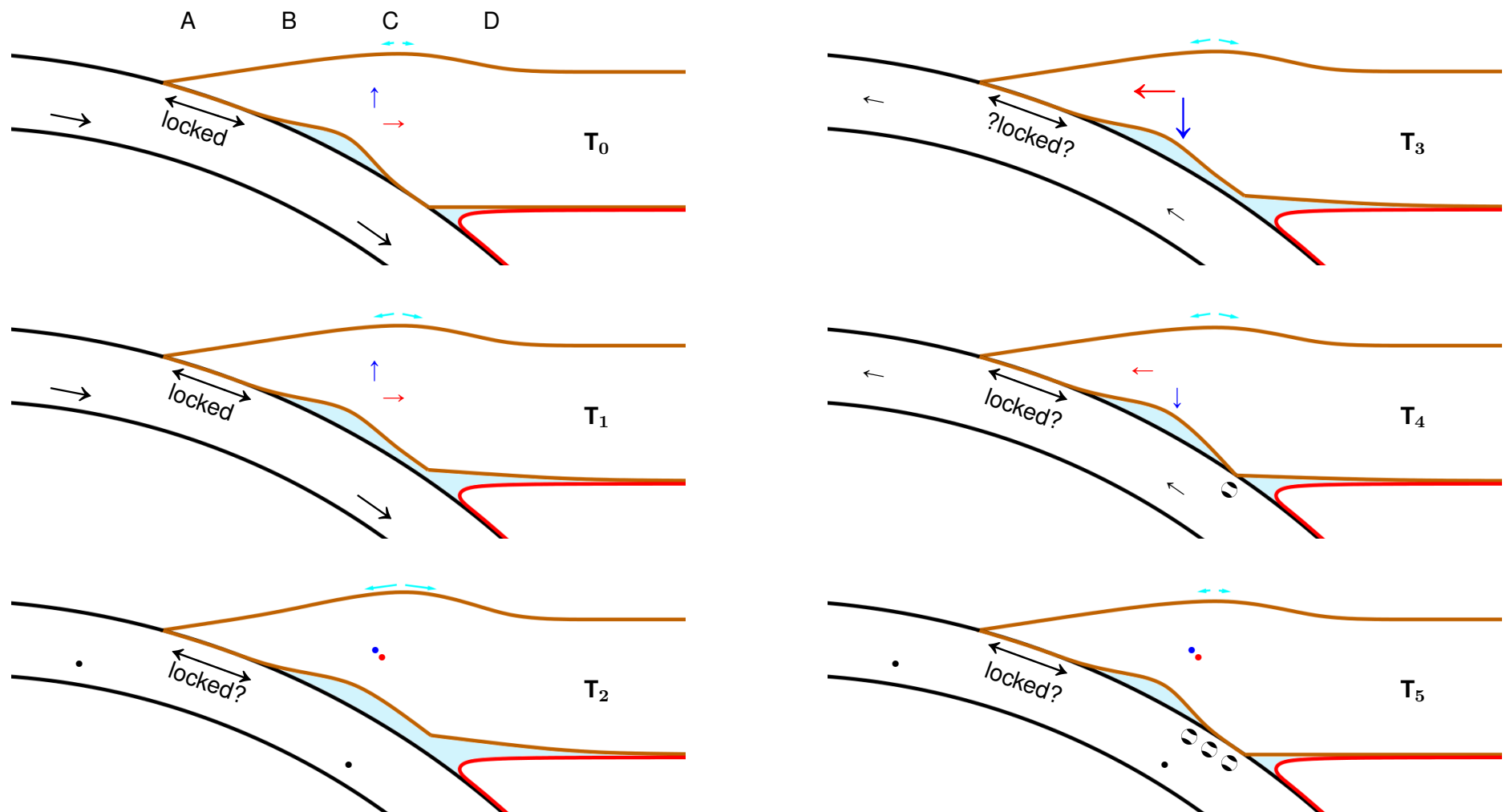


Fig. 9: **Schematic illustration of the different phases of the Episodic Buckling and Collapse model of the subduction process and the structural changes therein.** The subducting oceanic crust is outlined by black lines and the black arrows represent the direction and magnitude of the slab velocity. The overriding continental crust is represented by the solid brown lines. Red and blue arrows represent the magnitudes of the instantaneous horizontal and vertical velocities, respectively, of a point in the continental crust wedge. Dots in Phases T_2 , and T_4 represent vectors of magnitude zero. The tilt magnitude and direction are denoted by the arrows in cyan. The side-view of CLVD focal spheres are shown along the plate interface. Temporal motion of locations A through D on the continental crust surface are analyzed in Figure 5 below.

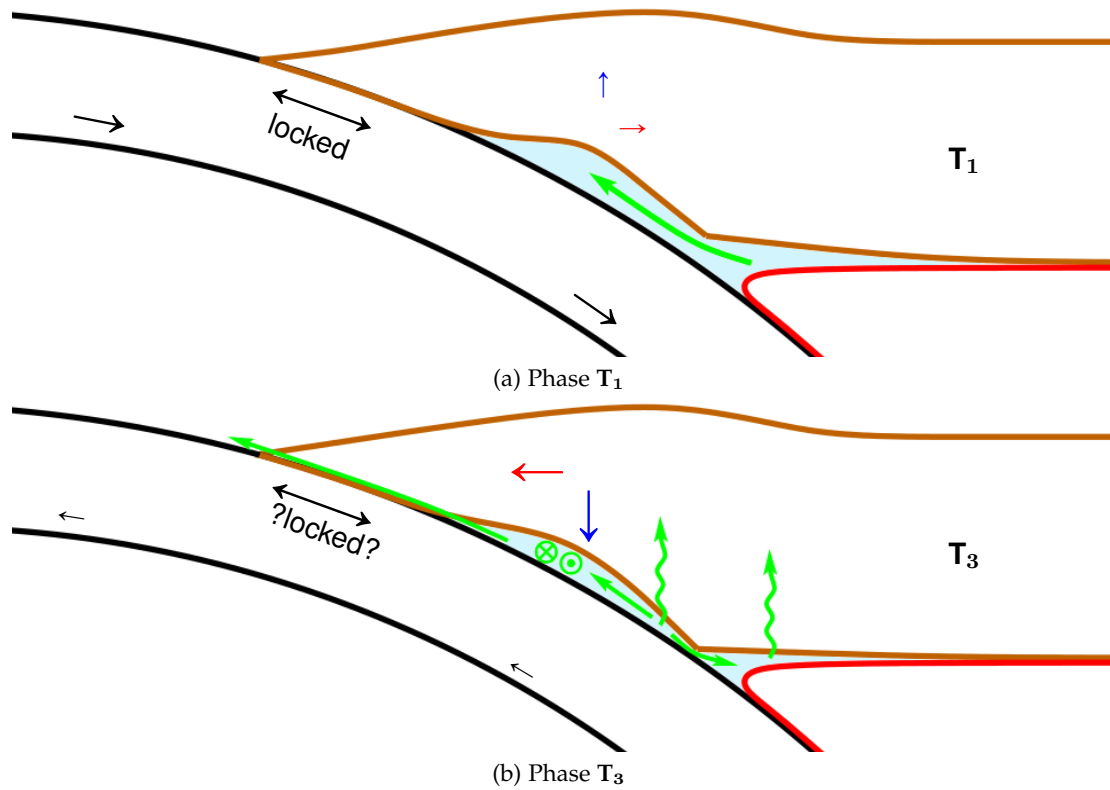


Fig. 10: **Schematic illustration of magmatic fluid flow during each Episodic Buckling and Collapse cycle.** Two-dimensional cross-sections for phases (a) T₁ and (b) T₃ are shown. Green arrows represent the flow direction of magmatic fluids. The sinuous green lines fluid flow into the overlying crust.

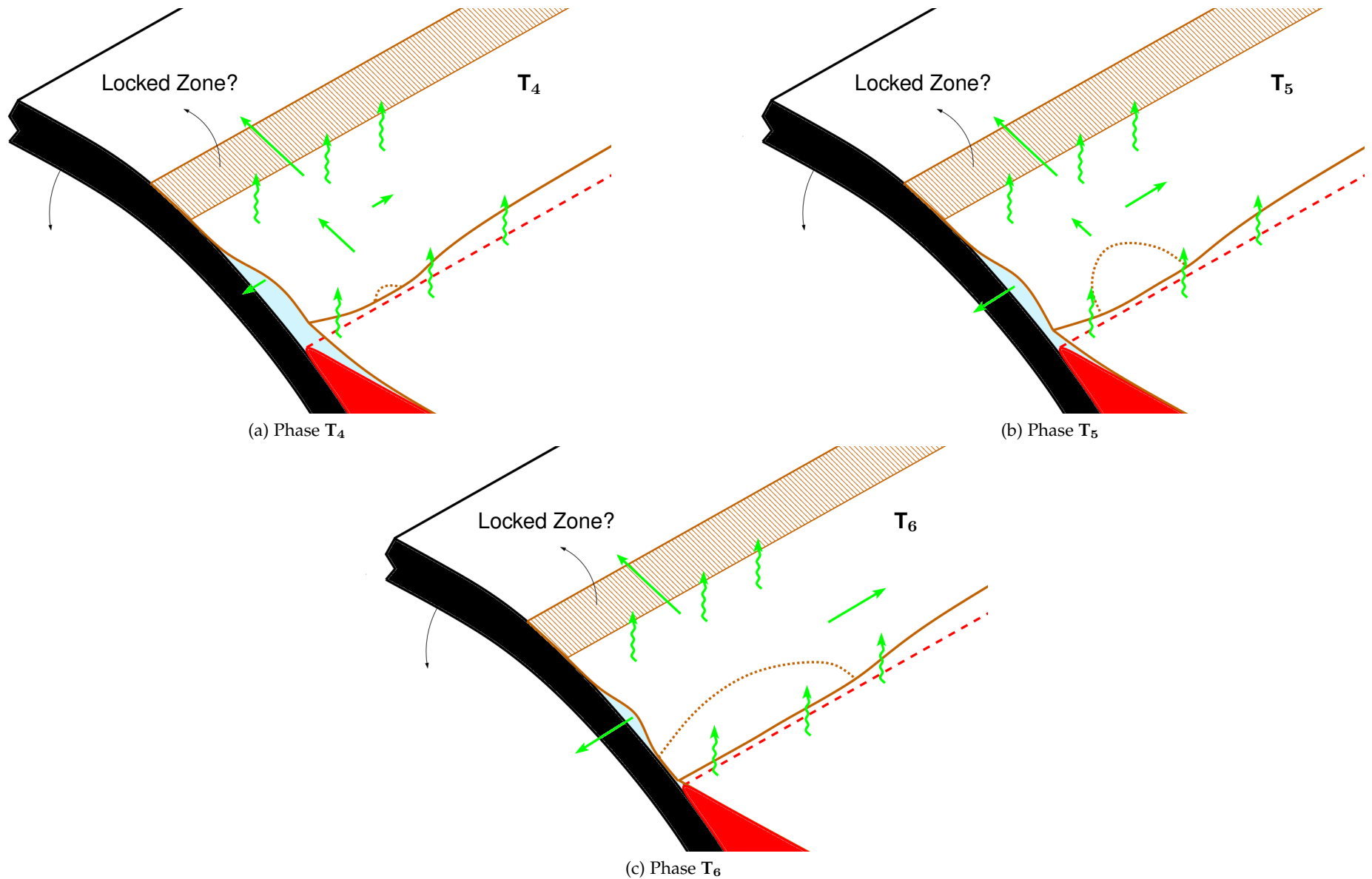


Fig. 11: **Three-dimensional schematic illustration of magmatic fluid flow during the latter stages of each Episodic Buckling and Collapse cycle.** Only the basal surface of the continental crust is shown for clarity. The dashed brown line corresponds to the leading edge of the advancing tremor front (edge of the contact between the continental crust and subducting slab). Green arrows represent the flow direction of magmatic fluids. The sinuous green lines fluid flow into the overlying crust.

5 MEGATHRUST CYCLE MADE UP OF MULTIPLE EBC CYCLES

All existing megathrust models assume the continental crust to be in contact with the subducting slab and the mantle at all locations. On the other hand, according to the Episodic Buckling and Collapse model, at the start of the megathrust buckling cycle, the continental crust is in direct contact with the subducting slab at all depths.

However, with each short-term buckling cycle, there is a net positive accumulation of vertical strain within the continental crust, resulting in progressive vertical detachment of the crust and slab as depicted below. Although majority of the strain in the overriding plate is released when it collapses, a small portion of the strain is retained in every EBC cycle. Over hundreds of short-term buckling and collapse cycles, the small retained strains add up and this strain energy is stored in the overriding continental plate. During GPS processing, one usually performs a detrending step, which eliminates the signature corresponding to this stored strain energy.

A critical state is attained where the forces exerted by the stored elastic energy (due to compression) and gravitational potential energy (stored in the uplifted continental crust) exceed the frictional forces in the seismogenic zone (locked zone). This state of deformation exhibits the maximal horizontal (at location A) and vertical (at location C) displacements of the overriding plate (Figures 12 and 13, respectively). As the frictional forces are exceeded, the stored energy is released in the form of a megathrust earthquake (end of megathrust cycle in Figures 12 and 13).

We hypothesize that the short-term buckling and collapse cycles described above are sequences that make up each long-term megathrust cycle. Therefore, each megathrust cycle can be considered to be one centuries-long buckling and collapse cycle which in turn is made up of numerous short-term cycles. Evidence of these inter-seismic vertical crustal deformations corresponding to megathrust earthquakes is found in long-term geologic records^{62–65,69,70} and may be interpreted as large time-scale versions of the buckling process that take centuries to develop. The rapid subsidence, observed by Sherrod⁶³, Leonard et al.⁶⁴, Shennan and Hamilton⁶⁵, Hamilton and Shennan⁶⁹, Hamilton et al.⁷⁰ on geologic records, occurs during the express subsidence of the overriding continental plate. Most researchers report a maximum vertical subsidence of 2 to 3 m (Figure 12).

As the continental plate completely collapses after a megathrust earthquake, the horizontal component of the GPS shows large seaward displacements (in particular the locations close to the trench, Figure 12). The large aseismic afterslip, following megathrust earthquakes and observed in multiple studies^{85,86}, is simply the horizontal projection of the seaward surface displacement of the overriding continental plate while it completely collapses. Several researchers report displacements as large as 60 m. Also, because the overriding plate gradually collapses while pushing fluids out (instead of sliding on the oceanic slab), there is no seismic energy released – it is predominantly aseismic. The magmatic fluids are most likely pushed out along-strike and to the trench along the ruptured plate boundary as evidenced by the significant increase in mantle helium in the seawater and reported by Sano et al.⁶¹.

As suspected by several geoscientists, the periodic release of stored energy in subduction zones in the form of fluid flow and seismic events, during each Episodic Buckling and Collapse cycle, indeed prevents megathrust earthquakes from occurring more frequently. A back-of-the-envelope calculation shows that if not for the episodic energy release, the Cascadia region would be experiencing one megathrust earthquake every 54 years.

Therefore, we believe that the key to forecasting megathrust earthquakes in a cost-effective fashion is to monitor long-term trends (in the order of decades and centuries) in ground deformation through multi-component GPS and tiltmeter recordings.

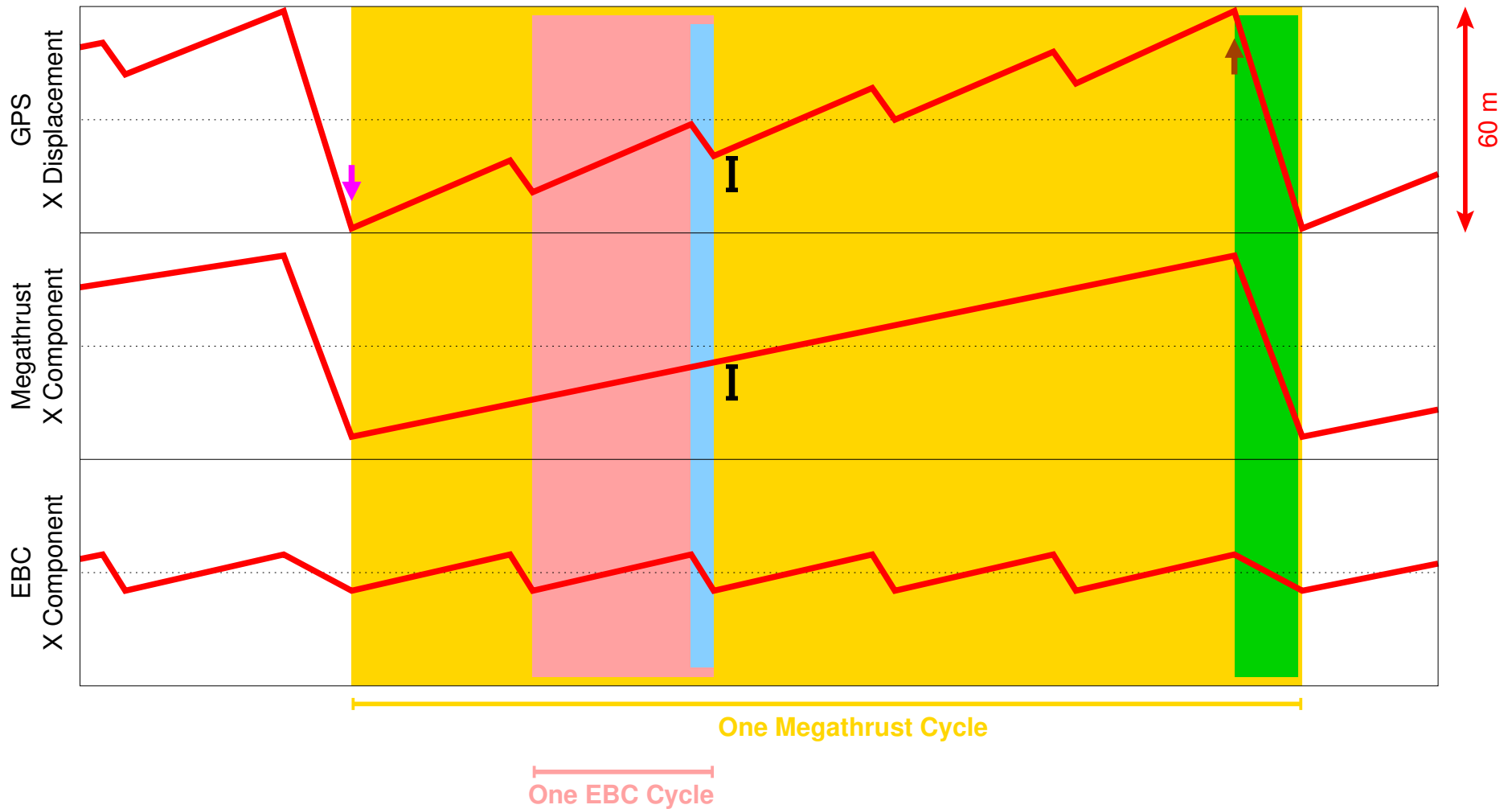


Fig. 12: Schematic of horizontal surface displacement of location A (near trench) observed on GPS (top plot), and decomposed into the megathrust component (middle plot) and the EBC component (bottom plot). The yellow time period denotes a single megathrust cycle, with the green period corresponding to the megathrust afterslip. The pink time period demarcates one of the multiple EBC cycles, with the blue corresponding to the collapse phase of the EBC cycle. Each megathrust cycle is composed of several EBC cycles. For illustration purposes, we show only 5 EBC cycles constituting each megathrust cycle; in reality, each megathrust cycle constitutes hundreds of EBC cycles. The maximum horizontal displacement (often referred to as megathrust afterslip) for each megathrust cycle is approximately 60 m. During routine GPS processing, a detrending step is carried out which removes the imprint of the megathrust cycle. The black line segment represents the net horizontal strain accumulated during each EBC cycle (and removed with detrending) at location A. The brown arrow corresponds to the time of the megathrust earthquake, when the seismogenic zone gets unlocked and the overriding plate begins its complete collapse. The magenta arrow represents the beginning of the megathrust cycle when the overriding plate has completely collapsed on the subducting slab and is in full contact with it all along the dip line.

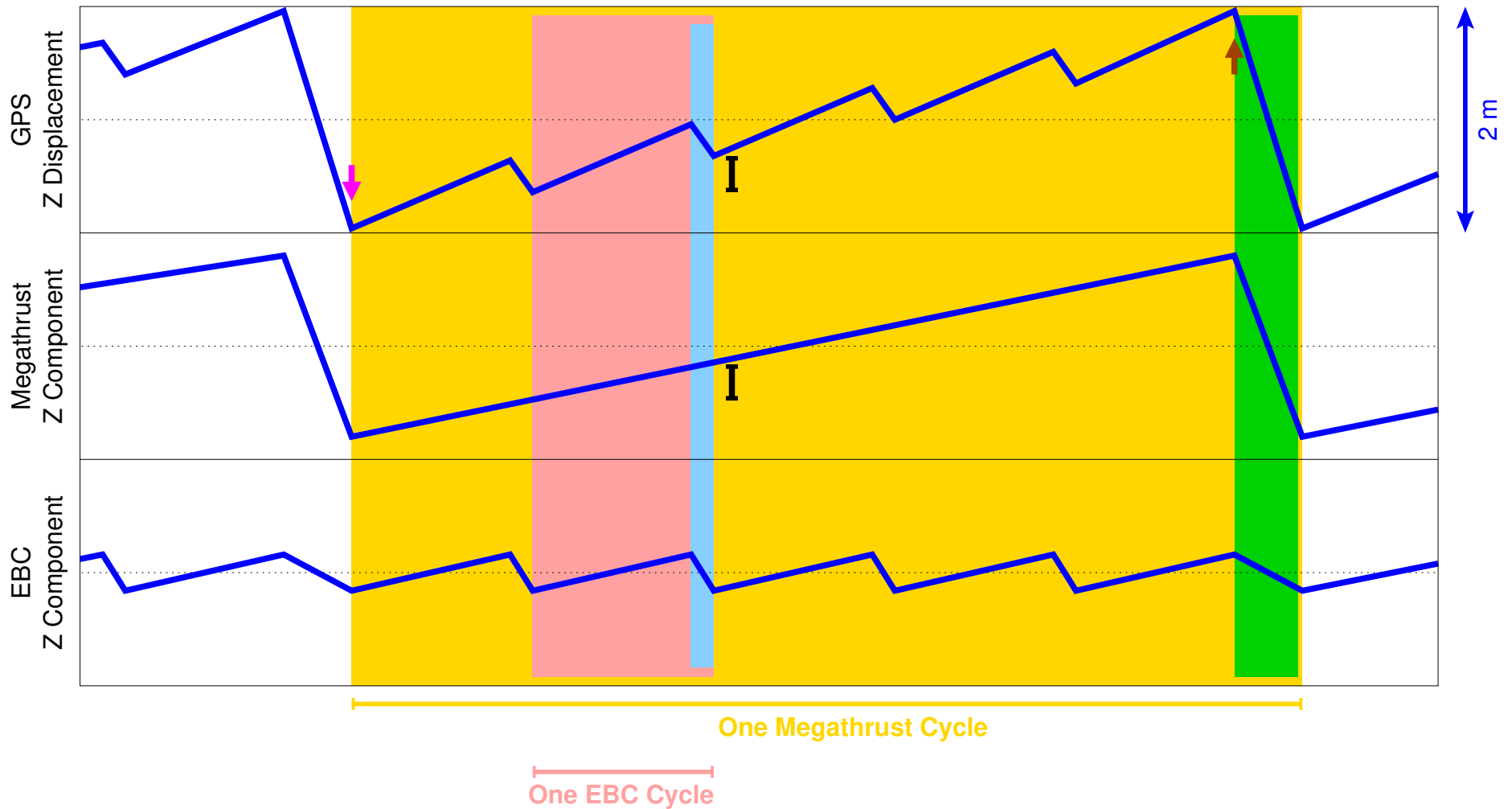


Fig. 13: Schematic of vertical surface displacement of location C (approximately above tremor zone) observed on GPS (top plot), and decomposed into the megathrust component (middle plot) and the EBC component (bottom plot). As in figure 12, the yellow time period denotes a single megathrust cycle, with the green period corresponding to the megathrust afterslip. The pink time period demarcates one of the multiple EBC cycles, with the blue corresponding to the collapse phase of the EBC cycle. Each megathrust cycle is composed of several EBC cycles. For illustration purposes, we show only 5 EBC cycles constituting each megathrust cycle; in reality, each megathrust cycle constitutes hundreds of EBC cycles. The maximum vertical displacement, as seen in the work of Sherrod⁶³, Leonard et al.⁶⁴, Shennan and Hamilton⁶⁵, Hamilton and Shennan⁶⁹, Hamilton et al.⁷⁰, for each megathrust cycle is approximately 2 m. During routine GPS processing, a detrending step is carried out which removes the imprint of the megathrust cycle. The black line segment represents the net vertical strain accumulated at location C during each EBC cycle (and removed with detrending). Again, the brown arrow corresponds to the time of the megathrust earthquake, when the seismogenic zone gets unlocked and the overriding plate begins its complete collapse. The magenta arrow represents the beginning of the megathrust cycle when the overriding plate has completely collapsed on the subducting slab and is in full contact with it all along the dip line.

ADDENDUM

Acknowledgments Partial funding for is provided by the National Science Foundation under the EAGER program (NSF Grant 1933169). In Cascadia, GPS time series are provided by the Pacific Northwest Geodetic Array, Central Washington University (<https://www.geodesy.cwu.edu/>). For Alaska, GPS time series data were downloaded from USGS (<https://earthquake.usgs.gov/monitoring/gps>). We thank Manika Prasad for discussions.

Author contributions Jyoti Behura developed the model, performed the field data analysis, and wrote the manuscript. Shayan Mehrani helped with numerical simulations in Solidworks. Farnoush Forghani contributed to further refining the model, to discussions, and editing the manuscript.

Competing interests The authors declare no competing interests.

Materials & Correspondence All correspondence may be directed to Jyoti Behura (jyoti.behura@SeismicScienceLL).

REFERENCES

- [1] Honn Kao, Shao-Ju Shan, Herb Dragert, and Garry Rogers. Northern Cascadia episodic tremor and slip: A decade of tremor observations from 1997 to 2007. *Journal of Geophysical Research: Solid Earth*, 114(B11), 2009. doi: 10.1029/2008jb006046.
- [2] Aaron G Wech, Kenneth C Creager, and Timothy I Melbourne. Seismic and geodetic constraints on Cascadia slow slip. *Journal of Geophysical Research: Solid Earth*, 114(B10), 2009. ISSN 2156-2202. doi: 10.1029/2008JB006090.
- [3] Gregory C Beroza and Satoshi Ide. Slow Earthquakes and Nonvolcanic Tremor. *Annual Review of Earth and Planetary Sciences*, 39(1):271–296, 2011. doi: 10.1146/annurev-earth-040809-152531.
- [4] Kazushige Obara. Characteristics and interactions between non-volcanic tremor and related slow earthquakes in the Nankai subduction zone, southwest Japan. *Journal of Geodynamics*, 52(3-4):229–248, 2011. doi: 10.1016/j.jog.2011.04.002.
- [5] Shinzaburo Ozawa, Hisashi Suito, and Mikio Tobita. Occurrence of quasi-periodic slow-slip off the east coast of the Boso peninsula, Central Japan. *Earth, Planets and Space*, 59(12):1241–1245, dec 2007. ISSN 1880-5981. doi: 10.1186/BF03352072.
- [6] Ryuta Arai, Tsutomu Takahashi, Shuichi Kodaira, Yuka Kaiho, Ayako Nakanishi, Gou Fujie, Yasuyuki Nakamura, Yojiro Yamamoto, Yasushi Ishihara, Seiichi Miura, and Yoshiyuki Kaneda. Structure of the tsunamigenic plate boundary and low-frequency earthquakes in the southern ryukyu trench. *Nature Communications*, 2016.
- [7] Kimberly C. Outerbridge, Timothy H. Dixon, Susan Y. Schwartz, Jacob I. Walter, Marino Protti, Victor Gonzalez, J. Biggs, Martin Thorwart, and Wolfgang Rabbel. A tremor and slip event on the cocos-caribbean subduction zone as measured by a global positioning system (gps) and seismic network on the nicoya peninsula, costa rica. *Journal of Geophysical Research: Solid Earth*, 115(B10), 2010. doi: 10.1029/2009JB006845. URL <https://agupubs.onlinelibrary.wiley.com/doi/abs/10.1029/2009JB006845>.
- [8] F. Pasten-Araya, P. Salazar, S. Ruiz, E. Rivera, B. Potin, A. Maksymowicz, E. Torres, J. Villarroel, E. Cruz, J. Valenzuela, D. Jaldn, G. Gonzlez, W. Bloch, P. Wigger, and S. A. Shapiro. Fluids along the plate interface influencing the frictional regime of the chilean subduction zone, northern chile. *Geophysical Research Letters*, 45(19):10,378–10,388, 2018. doi: 10.1029/2018GL079283. URL <https://agupubs.onlinelibrary.wiley.com/doi/abs/10.1029/2018GL079283>.
- [9] E. Klein, Z. Duputel, D. Zigone, C. Vigny, J.-P. Boy, C. Doubre, and G. Meneses. Deep transient slow slip detected by survey gps in the region of atacama, chile. *Geophysical Research Letters*, 45(22):12,263–12,273, 2018. doi: 10.1029/2018GL080613. URL <https://agupubs.onlinelibrary.wiley.com/doi/abs/10.1029/2018GL080613>.
- [10] Laura M Wallace and John Beavan. Diverse slow slip behavior at the Hikurangi subduction margin, New Zealand. *Journal of Geophysical Research*, 115(B12), feb 2010. doi: 10.1029/2010jb007717.
- [11] J Behura, M Prasad, and F Forghani. Episodic Buckling and Collapse - The Breathing Subduction Zones. In *AGU Fall Meeting Abstracts*, volume 2018, pages T21F–0289, dec 2018.
- [12] S. P. Timoshenko and J. M. Gere. *Theory of elastic stability*. McGraw-Hill, 2nd edition, 1961.

- [13] J.M. Gere and B.J. Goodno. *Mechanics of Materials*. Cengage Learning, 2012. ISBN 9781111577735. URL <https://books.google.co.in/books?id=VQDAsEHAH-AC>.
- [14] Joe G. Easley and Anthony M. Waas. *Analysis of Structures: An Introduction Including Numerical Methods*. John Wiley & Sons, Ltd, 2011.
- [15] Sean C. Solomon, Randall M. Richardson, and Eric A. Bergman. Tectonic stress: Models and magnitudes. *Journal of Geophysical Research: Solid Earth*, 85(B11):6086–6092, 1980. doi: 10.1029/JB085iB11p06086. URL <https://agupubs.onlinelibrary.wiley.com/doi/abs/10.1029/JB085iB11p06086>.
- [16] W. F. Brace and D. L. Kohlstedt. Limits on lithospheric stress imposed by laboratory experiments. *Journal of Geophysical Research: Solid Earth*, 85(B11):6248–6252, 1980. doi: 10.1029/JB085iB11p06248. URL <https://agupubs.onlinelibrary.wiley.com/doi/abs/10.1029/JB085iB11p06248>.
- [17] Eugene B. Burov. Rheology and strength of the lithosphere. *Marine and Petroleum Geology*, 28(8): 1402 – 1443, 2011. ISSN 0264-8172. doi: <https://doi.org/10.1016/j.marpetgeo.2011.05.008>. URL <http://www.sciencedirect.com/science/article/pii/S0264817211001425>.
- [18] Dassault Systèmes. Solidworks. URL <https://solidworks.com>.
- [19] Susan Y Schwartz and Juliana M Rokosky. Slow slip events and seismic tremor at circum-Pacific subduction zones. *Reviews of Geophysics*, 45(3), 2007. doi: 10.1029/2006rg000208.
- [20] Garry Rogers and Herb Dragert. Episodic Tremor and Slip on the Cascadia Subduction Zone: The Chatter of Silent Slip. *Science*, 300(5627):1942–1943, 2003. ISSN 0036-8075. doi: 10.1126/science.1084783.
- [21] Geoffrey Blewitt, David Lavallée, Peter Clarke, and Konstantin Nurutdinov. A New Global Mode of Earth Deformation: Seasonal Cycle Detected. *Science*, 294(5550):2342–2345, 2001. ISSN 0036-8075. doi: 10.1126/science.1065328. URL <https://science.sciencemag.org/content/294/5550/2342>.
- [22] D Dong, P Fang, Y Bock, M K Cheng, and S Miyazaki. Anatomy of apparent seasonal variations from GPS-derived site position time series. *Journal of Geophysical Research: Solid Earth*, 107(B4):ETG 9–1–ETG 9–16, 2002. doi: 10.1029/2001JB000573. URL <https://agupubs.onlinelibrary.wiley.com/doi/abs/10.1029/2001JB000573>.
- [23] Pierre Bettinelli, Jean-Philippe Avouac, Mireille Flouzat, Laurent Bollinger, Guillaume Ramillien, Sudhir Rajaure, and Som Sapkota. Seasonal variations of seismicity and geodetic strain in the Himalaya induced by surface hydrology. *Earth and Planetary Science Letters*, 266(3):332–344, 2008. ISSN 0012-821X. doi: 10.1016/j.epsl.2007.11.021. URL <http://www.sciencedirect.com/science/article/pii/S0012821X07007492>.
- [24] Yuning Fu and Jeffrey T. Freymueller. Repeated large slow slip events at the southcentral alaska subduction zone. *Earth and Planetary Science Letters*, 375:303 – 311, 2013. ISSN 0012-821X. doi: <https://doi.org/10.1016/j.epsl.2013.05.049>. URL <http://www.sciencedirect.com/science/article/pii/S0012821X13003038>.
- [25] A Douglas. Slow slip on the northern Hikurangi subduction interface, New Zealand. *Geophysical Research Letters*, 32(16), 2005. doi: 10.1029/2005gl023607.
- [26] Shinichi Miyazaki, Paul Segall, Jeffery J Mcguire, Teruyuki Kato, and Yuki Hatanaka. Spatial and temporal evolution of stress and slip rate during the 2000 Tokai slow earthquake. *Journal of Geophysical Research: Solid Earth*, 111(B3), 2006. doi: 10.1029/2004jb003426.
- [27] Kosuke Heki and Takeshi Kataoka. On the biannually repeating slow-slip events at the Ryukyu Trench, southwestern Japan. *Journal of Geophysical Research*, 113(B11), apr 2008. doi: 10.1029/2008jb005739.
- [28] Zhen Liu, Angelyn W Moore, and Susan Owen. Recurrent slow slip event reveals the interaction with seismic slow earthquakes and disruption from large earthquake. *Geophysical Journal International*, 202(3):1555–1565, 2015. ISSN 0956-540X. doi: 10.1093/gji/ggv238. URL <https://doi.org/10.1093/gji/ggv238>.
- [29] Ray E Wells, Richard J Blakely, Aaron G Wech, Patricia A McCrory, and Andrew Michael. Cascadia subduction tremor muted by crustal faults. *Geology*, 45(6):515–518, 2017. ISSN 0091-7613. doi: 10.1130/G38835.1. URL <https://doi.org/10.1130/G38835.1>.
- [30] Y Ohta, J Freymueller, S Hreinsdottir, and H Suito. A large slow slip event and the depth of the

- seismogenic zone in the south central Alaska subduction zone. *Earth and Planetary Science Letters*, 247 (1-2):108–116, 2006. doi: 10.1016/j.epsl.2006.05.013.
- [31] Chloe L Peterson and Douglas H Christensen. Possible relationship between nonvolcanic tremor and the 1998–2001 slow slip event, south central Alaska. *Journal of Geophysical Research*, 114(B6), apr 2009. doi: 10.1029/2008jb006096.
- [32] Hitoshi Hirose, Kazuro Hirahara, Fumiaki Kimata, Naoyuki Fujii, and Shinichi Miyazaki. A slow thrust slip event following the two 1996 Hyuganada Earthquakes beneath the Bungo Channel, southwest Japan. *Geophysical Research Letters*, 26(21):3237–3240, jan 1999. doi: 10.1029/1999gl010999.
- [33] Herb Dragert, Kelin Wang, and Thomas S James. A Silent Slip Event on the Deeper Cascadia Subduction Interface. *Science*, 2001. ISSN 0036-8075. doi: 10.1126/science.1060152.
- [34] Kazushige Obara, Hitoshi Hirose, Fumio Yamamizu, and Keiji Kasahara. Episodic slow slip events accompanied by non-volcanic tremors in southwest Japan subduction zone. *Geophysical Research Letters*, 31(23), mar 2004. doi: 10.1029/2004gl020848.
- [35] Hitoshi Hirose and Kazushige Obara. Repeating short- and long-term slow slip events with deep tremor activity around the Bungo channel region, southwest Japan. *Earth, Planets and Space*, 57(10): 961–972, 2005. doi: 10.1186/bf03351875.
- [36] Hitoshi Hirose and Kazushige Obara. Recurrence behavior of short-term slow slip and correlated nonvolcanic tremor episodes in western Shikoku, southwest Japan. *Journal of Geophysical Research*, 115, 2010. doi: 10.1029/2008jb006050.
- [37] Donna Eberhart-Phillips, Douglas H Christensen, Thomas M Brocher, Roger Hansen, Natalia A Ruppert, Peter J Haeussler, and Geoffrey A Abers. Imaging the transition from Aleutian subduction to Yakutat collision in central Alaska, with local earthquakes and active source data. *Journal of Geophysical Research: Solid Earth*, 111(B11), 2006. doi: 10.1029/2005jb004240.
- [38] Makoto Matsubara, Kazushige Obara, and Keiji Kasahara. High-Vp/Vs zone accompanying non-volcanic tremors and slow-slip events beneath southwestern Japan. *Tectonophysics*, 472(1-4):6–17, 2009. doi: 10.1016/j.tecto.2008.06.013.
- [39] Pascal Audet, Michael G Bostock, Nikolas I Christensen, and Simon M Peacock. Seismic evidence for overpressured subducted oceanic crust and megathrust fault sealing. *Nature*, 457(7225):76–78, 2009. doi: 10.1038/nature07650.
- [40] Y. Kim, R. W. Clayton, and J. M. Jackson. Geometry and seismic properties of the subducting cocos plate in central mexico. *Journal of Geophysical Research: Solid Earth*, 115(B6), 2010. doi: 10.1029/2009JB006942. URL <https://agupubs.onlinelibrary.wiley.com/doi/abs/10.1029/2009JB006942>.
- [41] Rebecca Bell, Rupert Sutherland, Daniel H N Barker, Stuart Henrys, Stephen Bannister, Laura Wallace, and John Beavan. Seismic reflection character of the Hikurangi subduction interface, New Zealand, in the region of repeated Gisborne slow slip events. *Geophysical Journal International*, 180(1):34–48, 2010. doi: 10.1111/j.1365-246x.2009.04401.x.
- [42] R. T. J. Hansen, M. G. Bostock, and N. I. Christensen. Nature of the low velocity zone in Cascadia from receiver function waveform inversion. *Earth and Planetary Science Letters*, 337:25–38, jul 2012. doi: 10.1016/j.epsl.2012.05.031.
- [43] Mitsuhiro Toya, Aitaro Kato, Takuto Maeda, Kazushige Obara, Tetsuya Takeda, and Koshun Yamaoka. Down-dip variations in a subducting low-velocity zone linked to episodic tremor and slip: a new constraint from ScSp waves. *Scientific Reports*, 7(1), jun 2017. doi: 10.1038/s41598-017-03048-6.
- [44] Justin L Rubinstein, John E Vidale, Joan Gomberg, Paul Bodin, Kenneth C Creager, and Stephen D Malone. Non-volcanic tremor driven by large transient shear stresses. *Nature*, 448(7153):579–582, 2007. doi: 10.1038/nature06017.
- [45] Junichi Nakajima and Naoki Uchida. Repeated drainage from megathrusts during episodic slow slip. *Nature Geoscience*, 11(5):351–356, apr 2018. doi: 10.1038/s41561-018-0090-z.
- [46] William B. Frank and Emily E. Brodsky. Daily measurement of slow slip from low-frequency earthquakes is consistent with ordinary earthquake scaling. *Science Advances*, 5(10), 2019. doi: 10.1126/sciadv.aaw9386. URL <https://advances.sciencemag.org/content/5/10/eaaw9386>.
- [47] Pascal Audet and Andrew J Schaeffer. Fluid pressure and shear zone development over the locked to slow slip region in Cascadia. *Science Advances*, 4(3), 2018. doi: 10.1126/sciadv.aar2982.

- [48] K Obara. Nonvolcanic deep tremor associated with subduction in southwest Japan. *Science*, 296(5573):1679–1681, may 2002.
- [49] D R Shelly, G C Beroza, S Ide, and S Nakamura. Low-frequency earthquakes in Shikoku, Japan, and their relationship to episodic tremor and slip. *Nature*, 442(7099):188–191, jul 2006.
- [50] Aaron G Wech and Kenneth C Creager. Cascadia tremor polarization evidence for plate interface slip. *Geophysical Research Letters*, 34(22), 2007. doi: 10.1029/2007gl031167.
- [51] M G Bostock, A A Royer, E H Hearn, and S M Peacock. Low frequency earthquakes below southern Vancouver Island. *Geochemistry, Geophysics, Geosystems*, 13(11):n/a—n/a, 2012. ISSN 1525-2027. doi: 10.1029/2012GC004391. URL <http://dx.doi.org/10.1029/2012GC004391>.
- [52] Kazuaki Ohta, Yoshihiro Ito, Ryota Hino, Shukei Ohyanagi, Takanori Matsuzawa, Hajime Shiobara, and Masanao Shinohara. Tremor and Inferred Slow Slip Associated With Afterslip of the 2011 Tohoku Earthquake. *Geophysical Research Letters*, 46(9):4591–4598, 2019. doi: 10.1029/2019GL082468. URL <https://agupubs.onlinelibrary.wiley.com/doi/abs/10.1029/2019GL082468>.
- [53] Pascal Audet, Michael G Bostock, Devin C Boyarko, Michael R Brudzinski, and Richard M Allen. Slab morphology in the Cascadia fore arc and its relation to episodic tremor and slip. *Journal of Geophysical Research*, 115, feb 2010. doi: 10.1029/2008jb006053.
- [54] David R Shelly, Gregory C Beroza, and Satoshi Ide. Non-volcanic tremor and low-frequency earthquake swarms. *Nature*, 446(7133):305–307, 2007. doi: 10.1038/nature05666.
- [55] Abhijit Ghosh, John E Vidale, Justin R Sweet, Kenneth C Creager, Aaron G Wech, Heidi Houston, and Emily E Brodsky. Rapid, continuous streaking of tremor in Cascadia. *Geochemistry, Geophysics, Geosystems*, 11(12), 2010. doi: 10.1029/2010gc003305.
- [56] Devin C Boyarko and Michael R Brudzinski. Spatial and temporal patterns of nonvolcanic tremor along the southern Cascadia subduction zone. *Journal of Geophysical Research*, 115, 2010. doi: 10.1029/2008jb006064.
- [57] Kazushige Obara, Takanori Matsuzawa, Sachiko Tanaka, Takeshi Kimura, and Takuto Maeda. Migration properties of non-volcanic tremor in Shikoku, southwest Japan. *Geophysical Research Letters*, 38(9), oct 2011. doi: 10.1029/2011gl047110.
- [58] Kazushige Obara, Takanori Matsuzawa, Sachiko Tanaka, and Takuto Maeda. Depth-dependent mode of tremor migration beneath Kii Peninsula, Nankai subduction zone. *Geophysical Research Letters*, 39(10), 2012. doi: 10.1029/2012gl051420.
- [59] T Nicholson, M Bostock, and J F Cassidy. New constraints on subduction zone structure in northern Cascadia. *Geophysical Journal International*, 161(3):849–859, 2005. ISSN 0956-540X. doi: 10.1111/j.1365-246X.2005.02605.x. URL <https://doi.org/10.1111/j.1365-246X.2005.02605.x>.
- [60] Koji Umeda, Glen F McCrann, and Atusi Ninomiya. Helium isotopes as geochemical indicators of a serpentinized fore-arc mantle wedge. *Journal of Geophysical Research: Solid Earth*, 112(B10), 2007. doi: 10.1029/2007JB005031. URL <https://agupubs.onlinelibrary.wiley.com/doi/abs/10.1029/2007JB005031>.
- [61] Yuji Sano, Takahiro Hara, Naoto Takahata, Shinsuke Kawagucci, Makio Honda, Yoshiro Nishio, Wataru Tanikawa, Akira Hasegawa, and Keiko Hattori. Helium anomalies suggest a fluid pathway from mantle to trench during the 2011 Tohoku-Oki earthquake, jan 2014. URL <https://www.nature.com/articles/ncomms4084>.
- [62] H Dragert, R D Hyndman, G C Rogers, and K Wang. Current deformation and the width of the seismogenic zone of the northern Cascadia subduction thrust. *Journal of Geophysical Research: Solid Earth*, 99(B1):653–668, oct 1994. doi: 10.1029/93jb02516.
- [63] Brian L Sherrod. Evidence for earthquake-induced subsidence about 1100 yr ago in coastal marshes of southern Puget Sound, Washington. *Geological Society of America Bulletin*, 113(10):1299–1311, oct 2001. doi: 10.1130/0016-7606(2001)113;1299:EFEISA;2.0.CO;2.
- [64] Lucinda J Leonard, Roy D Hyndman, and Stéphane Mazzotti. Coseismic subsidence in the 1700 great Cascadia earthquake: Coastal estimates versus elastic dislocation models. *Geological Society of America Bulletin*, 116(5):655, 2004. doi: 10.1130/b25369.1.
- [65] Ian Shennan and Sarah Hamilton. Coseismic and pre-seismic subsidence associated with great earthquakes in Alaska. *Quaternary Science Reviews*, 25(1-2):1–8, 2006. doi: 10.1016/j.quascirev.2005.09.002.
- [66] Kazushige Obara, Sachiko Tanaka, Takuto Maeda, and Takanori Matsuzawa. Depth-dependent

- activity of non-volcanic tremor in southwest Japan. *Geophysical Research Letters*, 37(13), 2010. doi: 10.1029/2010GL043679.
- [67] Heidi Houston, Brent G Delbridge, Aaron G Wech, and Kenneth C Creager. Rapid tremor reversals in Cascadia generated by a weakened plate interface. *Nature Geoscience*, 4(6):404–409, 2011. doi: 10.1038/ngeo1157.
- [68] H Kao, S-J. Shan, H Dragert, G Rogers, J F Cassidy, and K Ramachandran. A wide depth distribution of seismic tremors along the northern Cascadia margin. *Nature*, 436(7052):841–844, 2005. doi: 10.1038/nature03903.
- [69] Sarah Hamilton and Ian Shennan. Late Holocene relative sea-level changes and the earthquake deformation cycle around upper Cook Inlet, Alaska. *Quaternary Science Reviews*, 24(12):1479–1498, 2005. ISSN 0277-3791. doi: 10.1016/j.quascirev.2004.11.003. URL <http://www.sciencedirect.com/science/article/pii/S0277379104003269>.
- [70] Sarah Hamilton, Ian Shennan, Rod Combellick, John Mulholland, and Cate Noble. Evidence for two great earthquakes at Anchorage, Alaska and implications for multiple great earthquakes through the Holocene. *Quaternary Science Reviews*, 24(18):2050–2068, 2005. ISSN 0277-3791. doi: 10.1016/j.quascirev.2004.07.027. URL <http://www.sciencedirect.com/science/article/pii/S0277379105001289>.
- [71] Emily E Brodsky and James Mori. Creep events slip less than ordinary earthquakes. *Geophysical Research Letters*, 34(16), 2007. doi: 10.1029/2007gl030917.
- [72] Masatoshi Miyazawa, Emily E Brodsky, and Jim Mori. Learning from dynamic triggering of low-frequency tremor in subduction zones. *Earth, Planets and Space*, 60(10), 2008. doi: 10.1186/bf03352858.
- [73] Zhigang Peng and Kevin Chao. Non-volcanic tremor beneath the Central Range in Taiwan triggered by the 2001 Mw 7.8 Kunlun earthquake. *Geophysical Journal International*, 175(2):825–829, 2008. ISSN 1365-246X. doi: 10.1111/j.1365-246X.2008.03886.x.
- [74] J L Rubinstein, M La Rocca, J E Vidale, K C Creager, and A G Wech. Tidal modulation of nonvolcanic tremor. *Science*, 319(5860):186–189, jan 2008.
- [75] Jessica C Hawthorne and Allan M Rubin. Tidal modulation of slow slip in Cascadia. *Journal of Geophysical Research*, 115(B9), 2010. doi: 10.1029/2010jb007502.
- [76] M M Haney, V C Tsai, and K M Ward. Widespread imaging of the lower crust, Moho, and upper mantle from Rayleigh waves: A comparison of the Cascadia and Aleutian-Alaska subduction zones. *2015 Fall Meeting, AGU*, 2016.
- [77] Kazushige Obara and Yoshihiro Ito. Very low frequency earthquakes excited by the 2004 off the Kii peninsula earthquakes: A dynamic deformation process in the large accretionary prism. *Earth, Planets and Space*, 57(4):321–326, apr 2005. ISSN 1880-5981. doi: 10.1186/BF03352570. URL <https://doi.org/10.1186/BF03352570>.
- [78] Masaru Nakano, Takane Hori, Eiichiro Araki, Shuichi Kodaira, and Satoshi Ide. Shallow very-low-frequency earthquakes accompany slow slip events in the Nankai subduction zone. *Nature Communications*, 9, 2018. doi: 10.1038/s41467-018-03431-5.
- [79] Justin R. Brown, Stephanie G. Prejean, Gregory C. Beroza, Joan S. Gomberg, and Peter J. Haeussler. Deep low-frequency earthquakes in tectonic tremor along the alaska-aleutian subduction zone. *Journal of Geophysical Research: Solid Earth*, 118(3):1079–1090, 2013. doi: 10.1029/2012JB009459. URL <https://agupubs.onlinelibrary.wiley.com/doi/abs/10.1029/2012JB009459>.
- [80] Y Ito, K Obara, K Shiomi, S Sekine, and H Hirose. Slow Earthquakes Coincident with Episodic Tremors and Slow Slip Events. *Science*, 315(5811):503–506, 2007. doi: 10.1126/science.1134454.
- [81] Yoshihiro Ito, Kazushige Obara, Takanori Matsuzawa, and Takuto Maeda. Very low frequency earthquakes related to small asperities on the plate boundary interface at the locked to aseismic transition, 2009. URL <https://agupubs.onlinelibrary.wiley.com/doi/abs/10.1029/2008JB006036>.
- [82] Takanori Matsuzawa, Kazushige Obara, and Takuto Maeda. Source duration of deep very low frequency earthquakes in western Shikoku, Japan. *Journal of Geophysical Research: Solid Earth*, 114(B11), 2009. doi: 10.1029/2008JB006044. URL <https://agupubs.onlinelibrary.wiley.com/doi/abs/10.1029/2008JB006044>.
- [83] J. Piña Valdés, A. Socquet, and F. Cotton. Insights on the japanese subduction megath-

- rust properties from depth and lateral variability of observed ground motions. *Journal of Geophysical Research: Solid Earth*, 123(10):8937–8956, 2018. doi: 10.1029/2018JB015743. URL <https://agupubs.onlinelibrary.wiley.com/doi/abs/10.1029/2018JB015743>.
- [84] Jesús Piña Valdés, Anne Socquet, Fabrice Cotton, and Sebastian Specht. Spatiotemporal variations of ground motion in northern chile before and after the 2014 mw8.1 iquique megathrust event. *Bulletin of the Seismological Society of America*, 108(2):801–814, 02 2018. ISSN 0037-1106. doi: 10.1785/0120170052. URL <https://doi.org/10.1785/0120170052>.
- [85] Joan S Gomberg, Stephanie G Prejean, and Natalia A Ruppert. Afterslip, Tremor, and the Denali Fault Earthquake. 2012.
- [86] Frederique Rolandone, Jean-Mathieu Nocquet, Patricia A Mothes, Paul Jarrin, Martin Vallée, Nadaya Cubas, Stephen Hernandez, Morgan Plain, Sandro Vaca, and Yvonne Font. Areas prone to slow slip events impede earthquake rupture propagation and promote afterslip. *Science Advances*, 4(1), 2018. doi: 10.1126/sciadv.aao6596. URL <https://advances.sciencemag.org/content/4/1/eaao6596>.