

# Impacts of Land Use Change on the Natural Flow Regime: A Case Study in the Meramec River Watershed in Eastern Missouri, USA

CHIN-LUNG WU<sup>1</sup>, Jason Knouft<sup>1</sup>, and Maria Chu<sup>2</sup>

<sup>1</sup>Saint Louis University

<sup>2</sup>University of Illinois, Urbana-Champaign

November 22, 2022

## Abstract

The natural flow regime within a watershed can be considered as the expected temporal patterns of streamflow variation in the absence of human impacts. While ecosystems have evolved to function under these conditions, the natural flow regime of most rivers has been significantly altered by human activities. Land use change, including the development of agriculture and urbanization, is a primary cause of the loss of natural flow regimes. These changes have altered discharge volume, timing, and variability, and consequently affected the structure and functioning of river ecosystems. The Meramec River watershed is located in east central Missouri and changes in land use have been the primary factor impacting flow regimes across the watershed. In this study, a watershed model, the Soil and Water Assessment Tool (SWAT), was developed to simulate a long-term time series of streamflow (1978-2014) within the watershed. Model performance was evaluated using statistical metrics and graphical technique including R-squared, Nash-Sutcliffe efficiency, cumulative error, and 1:1-ratio comparison between observed and simulated variables. The calibrated and validated SWAT model was then used to quantify the responses of the watershed when it was a forested natural landscape. An Indicator of Hydrologic Alteration (IHA) approach was applied to characterize the flow regime under the current landcover conditions as well as the simulated natural flow regime under the no land use change scenario. Differences in intra- and inter-annual ecologically relevant flow metrics were then compared using SWAT model outputs in conjunction with the IHA approach based on model outputs from current and no land use change conditions. This study provides a watershed-scale understanding of effects of land use change on a river's flow variability and provides a framework for the development of restoration plans for heavily altered watersheds.





# Impacts of Land Use Change on the Natural Flow Regime: A Case Study in the Meramec River Watershed in Eastern Missouri, USA



Chin-Lung Wu<sup>1</sup>, Jason H. Knouft<sup>1</sup>, Maria L. Chu<sup>2</sup>

<sup>1</sup> Center For Sustainability/Department of Biology, Saint Louis University, Saint Louis, MO.

<sup>2</sup> Agricultural and Biological Engineering, University of Illinois Urbana-Champaign, Champaign, IL

## Introduction

The natural flow regime of most rivers has been significantly altered by human activities. The natural flow regime within a watershed can be considered as the expected temporal patterns of streamflow variation in the absence of human impacts.

Land use change, including the development of agriculture and urbanization, is a primary cause of the loss of natural flow regimes. These changes have altered discharge volume, timing, and variability, and consequently affected the structure and functioning of river ecosystems.

A watershed model, the Soil and Water Assessment Tool (SWAT), was developed to simulate a long-term time series of streamflow within the Meramec River Basin in Missouri. An Indicator of Hydrologic Alteration (IHA) approach was applied to characterize the flow regime under the current land cover conditions as well as the simulated natural flow regime under the no land use change scenario.

This study provides a watershed-scale understanding of effects of land use change on a river's flow variability and provides a framework for the development of restoration plans for heavily altered watersheds.

## Objectives

- ◆ To validate the SWAT model in terms of streamflow and sediment load for the Meramec River Basin in Missouri
- ◆ To evaluate the impacts of land use change on the natural flow regime

## Materials and Methods

- ◆ The Meramec River Basin, covering an area of 10,270 km<sup>2</sup>, is located in east central Missouri on the northeastern flank of the Salem Plateau (Fig. 1). Annual precipitation is about 1040 mm. The primary land uses are forest (68%), pasture (19%) and urban (8%).
- ◆ Tools: 1) SWAT (Arnold et al., 1998; Neitsch et al., 2011); 2) IHA was used for calculating a total of 67 statistical parameters: 33 IHA parameters, and 34 Environmental Flow Components (EFC) parameters (Richter et al., 1996, 1997, 1998; The Nature Conservancy, 2009).
- ◆ Study period is from January 1981 – 2014. Calibration: 1996-2012; Validation: 1981-1995, 2013-2014.
- ◆ SWAT inputs: 1) Daily precipitation (10 stations) and air temperature (4 stations); 2) topographic data (30m×30m); 3) land use land cover 2011 and land cover without urbanization and agriculture, 4) soil data (SSURGO).
- ◆ Calibrated variables: flow (8 stations) and sediment load (1 station)
- ◆ Model performance metrics: Coefficient of determination (R<sup>2</sup>), Nash-Sutcliffe coefficient (NSE).
- ◆ Scenarios: Contemporary land use (baseline); Natural flow regime - exiting urbanization and agriculture converted to forest (hypothetical)

## Results

- ◆ For the model calibration and validation, R<sup>2</sup> varies from 0.71 to 0.89 while NSE varies from 0.69 to 0.89 for the streamflow (Fig. 2). For sediment load, R<sup>2</sup> and NSE were 0.91 for the calibration. During the validation period, R<sup>2</sup> and NSE were 0.53 and 0.37, respectively. Given the limited sediment load measurements and the associated uncertainty, the model's performance in sediment simulation is acceptable.
- ◆ Results show average flow and sub-basin sediment outflow were decreased by 2% and 11%, respectively, under hypothetical scenario.
- ◆ Flow from sub-basins with high percent of agriculture area were increased under the hypothetical scenario (Fig 3). It is likely due to higher than pasture grass/agricultural plants runoff coefficient for the forest.
- ◆ Monthly average flow at tributary outlets and Meramec River outlet were decreased by 4% (Fig. 4).

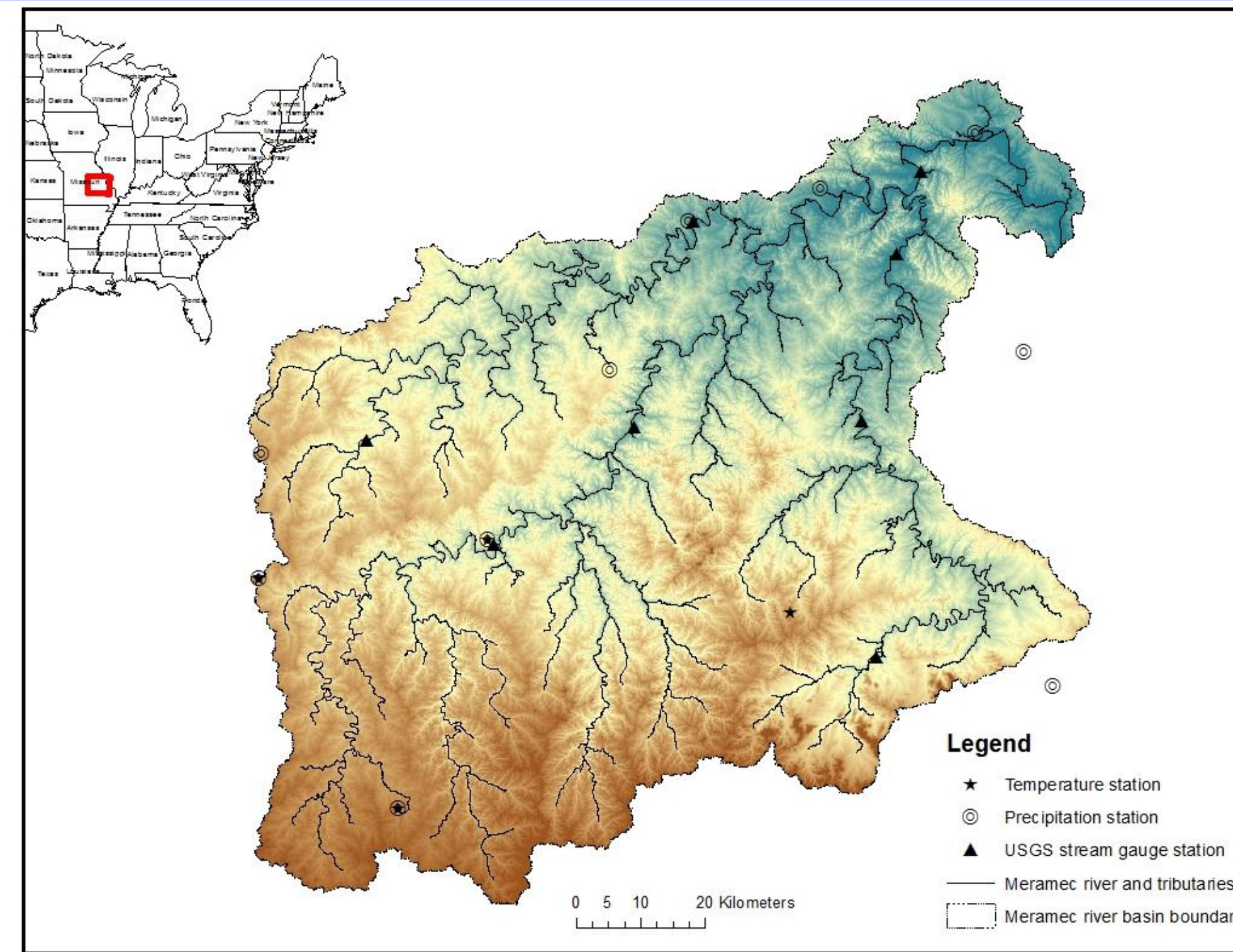


Figure 1. Locations of the Meramec River Basin, streamflow gauges, precipitation and temperature stations.

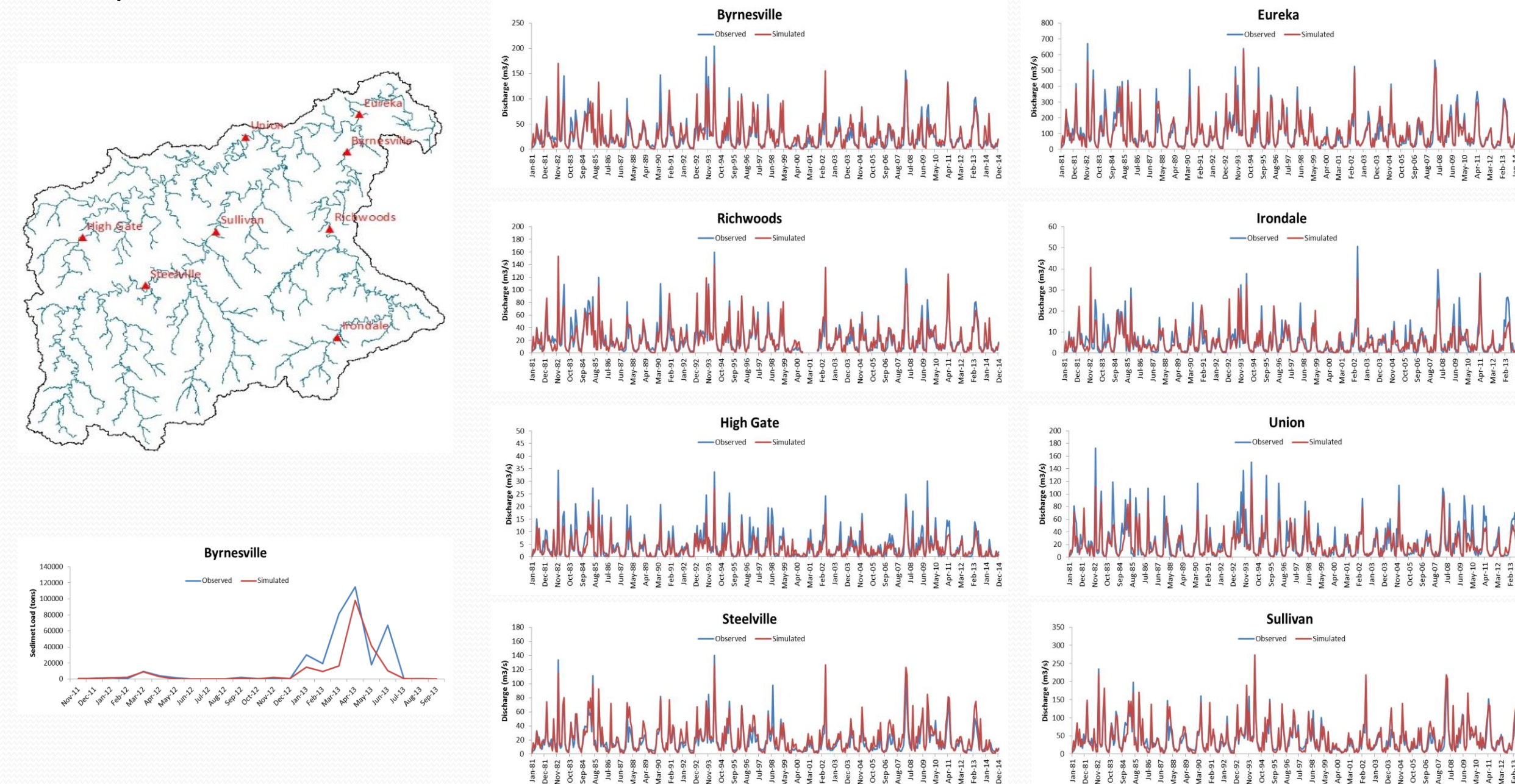


Figure 2. Calibration and validation of monthly streamflow and sediment load at the USGS stations in Meramec River Basin

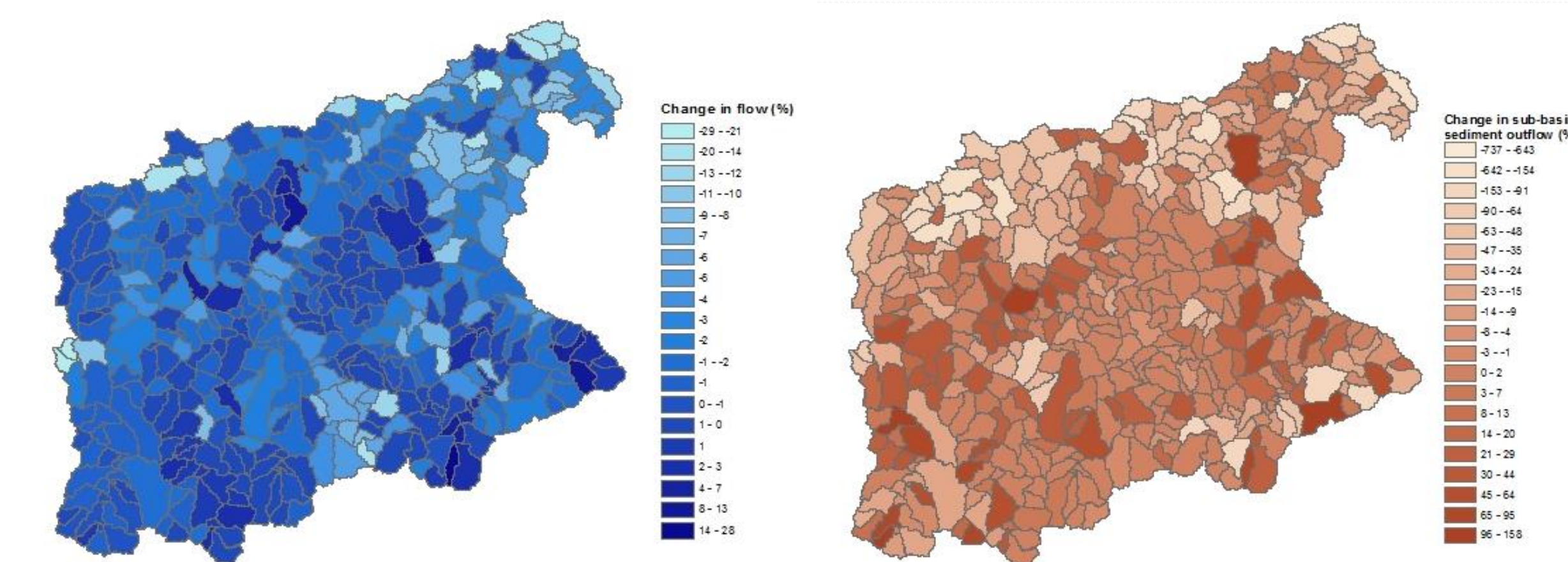


Figure 3. Percent difference in flow and sub-basin sediment outflows between baseline and hypothetical scenarios.

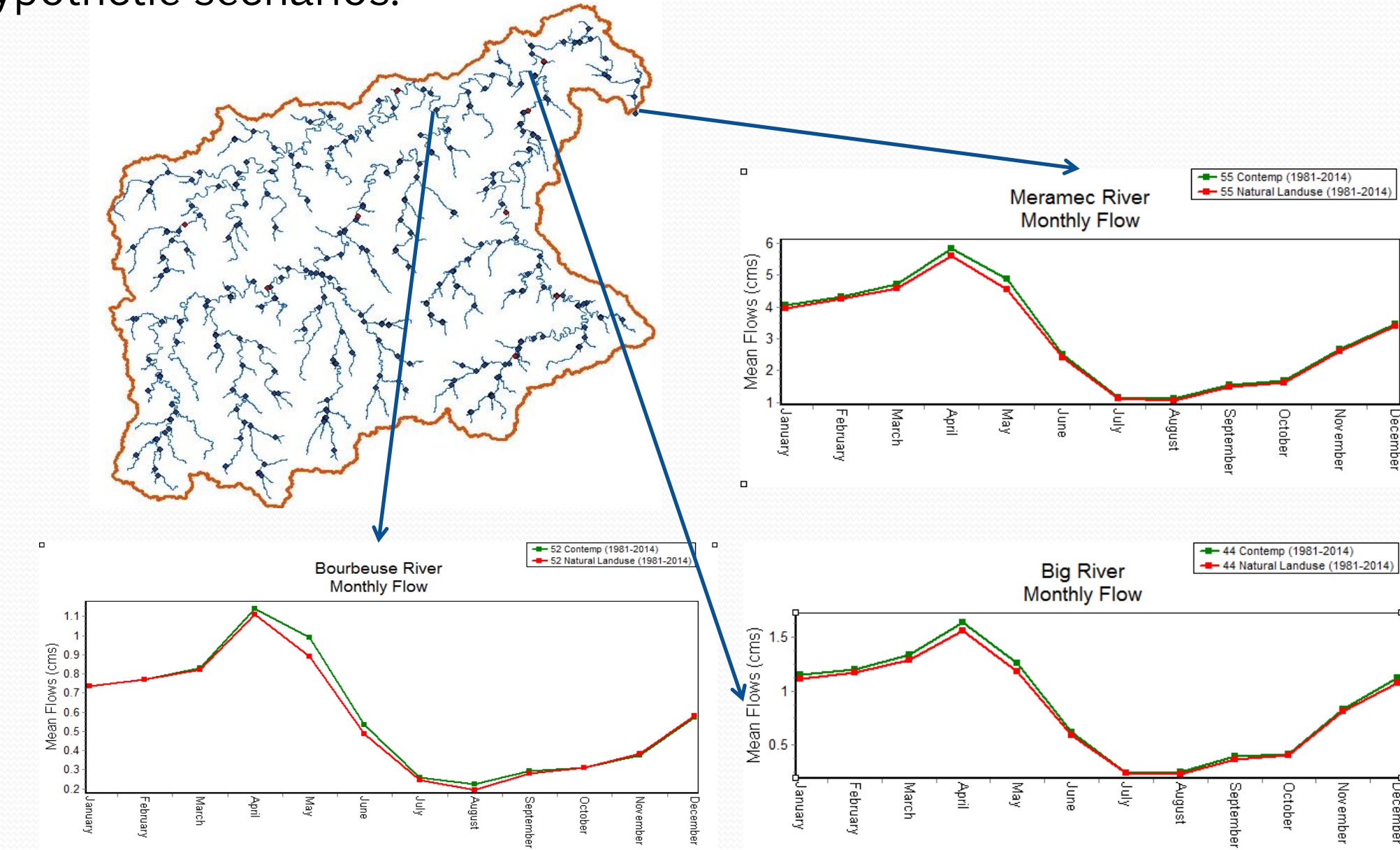


Figure 4. Averages of monthly flows for current condition and hypothetical scenario at the outlets of Meramec River Basin and main tributaries.



Figure 5. Changes in hydrologic alteration factors and the significantly altered factors at sub-basins with high percentage of urban (27) and agriculture (458) areas.

## Conclusions

- ◆ Restoring current land cover to its natural state results in little to no changes in flow at outlets of main tributaries and Meramec River.
- ◆ Land use changes has greater impacts on flow and sediment in localized areas.
- ◆ Results clearly show changes in flow condition under natural flow regime at sub-basins with high percentage of land use being changed to urban and agriculture (Fig 5).
- ◆ The ecologically sensitive IHA parameters and the associated inferences that may be drawn regarding the impacts on aquatic species can be useful in cases where ecological data is limited.

## References

- Arnold, J.G., Srinivasan, R., Muttiah, R.S., Williams, J.R., 1998. Large area hydrologic modeling and assessment-Part I: model development. Journal of the American Water Resources Association 34(1): 73-89.
- Neitsch, S.L., Arnold, J.G., Kiniry, J.R., Williams, J.R., 2011. Soil and Water Assessment Tool Theoretical Documentation, Version 2009. U.S. Department of Agriculture Agricultural Research Service (USDA/ARS) and Texas AgriLife Research. Texas Water Resources Institute Technical Report No. 406. Texas A&M Univ., College Station, TX, 618 p.
- Poff, N.L., Allan, J.D., Bain, M.B., Karr, J.R., Richter, B., Sparks, R., Stromberg, J., 1997. The natural flow regime: a new paradigm for riverine conservation and restoration. Bioscience 47, 769-784.
- Richter, B., Baumgartner, J.V., Powell, J., Braun, D.P., 1996. A method for assessing hydrologic alteration within ecosystems. Conservation Biology 10(4), 1163-1174.
- The Nature Conservancy, 2009. Indicators of Hydrologic Alteration Version 7.1 User's Manual. Available online at: <https://www.conservationgateway.org>.

## Acknowledgement

This research was supported by Center for Sustainability/Saint Louis University, The Nature Conservancy, Missouri Department of Natural Resources, and US Department of the Army Corp of Engineers.